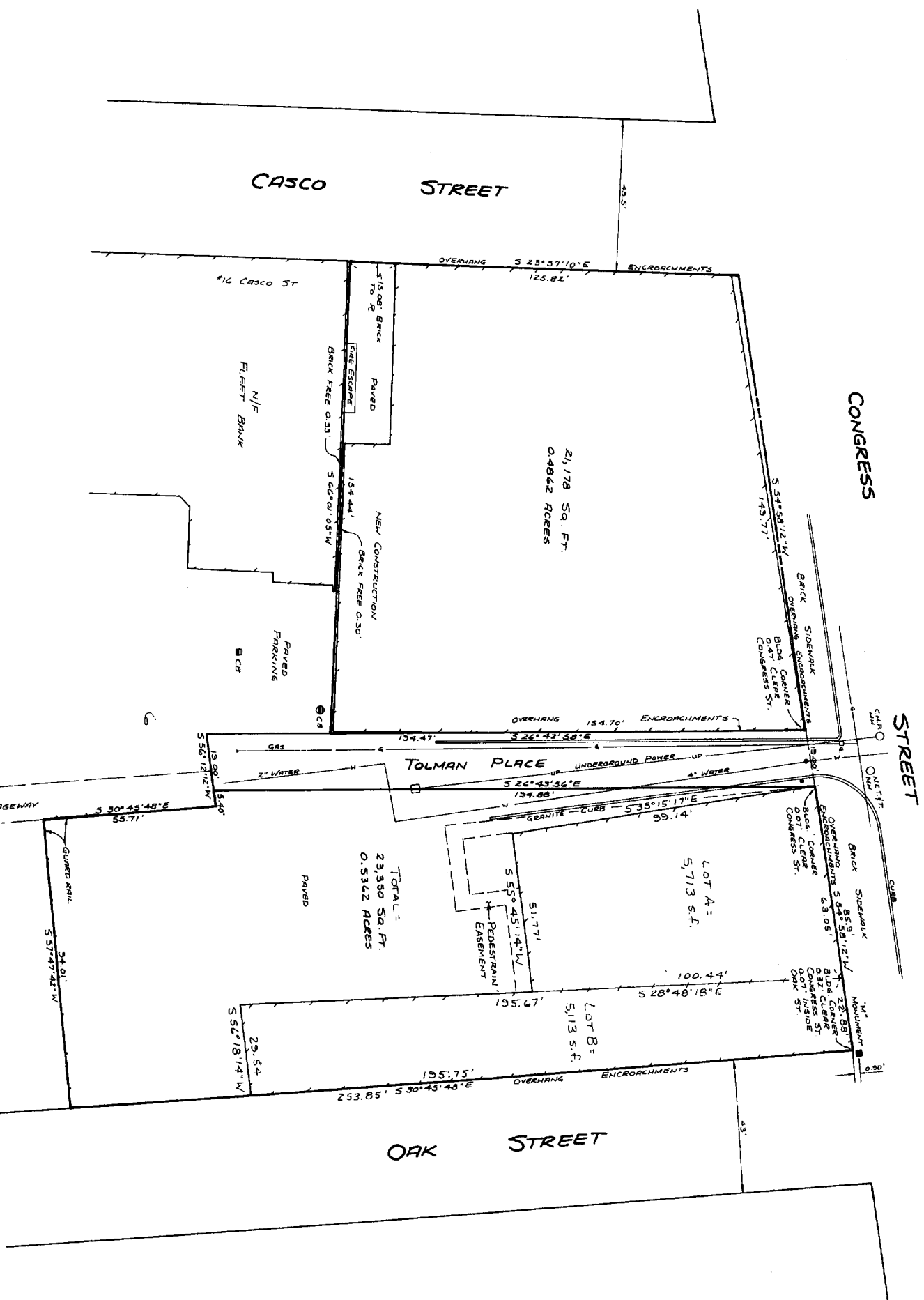
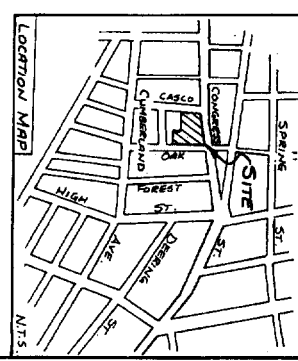


MAGNETIC 1915



TO HIGH ST.



LEGEND:

- WATER VALVE
- MANHOLE
- GAS VALVE
- GAS BASIN
- BUILDING LINE
- CURB OR FORMERLY
- N/I/F



NOTES:

- 1) DEED REFERENCE: BOOK 7646, Pg. 334 CUMBERLAND COUNTY REGISTRY OF DEEDS
- 2) PLAN OF LAND ON SHEPLEY STREET, PORTLAND, MAINE FOR HAMSTARD OVERLOOK, INC. BY OWEN HASKELL, INC. DATED AUG. 20, 1987.

PLAN REFERENCES:

- 1) PLAN OF LAND IN PORTLAND, MAINE, FOR MAINE SAVINGS BANK BY H. E. C. JORDAN, SURVEYOR, DATED AUG. 7, 1974.
- 2) PLAN OF LAND ON SHEPLEY STREET, PORTLAND, MAINE FOR HAMSTARD OVERLOOK, INC. BY OWEN HASKELL, INC. DATED AUG. 20, 1987.

CERTIFICATION:

TO: HEGA REALTY TRUST
First American Title Insurance Co.
FLEET BANK

OWEN HASKELL, INC. HEREBY CERTIFIES THAT PLAN IS BASED ON, AND THE RESULT OF, AN ON-GROUND FIELD SURVEY AND THAT TO THE BEST OF OUR KNOWLEDGE, INFORMATION AND BELIEF, IT CONFORMS TO THE BOARD OF LICENSURE FOR PROFESSIONAL LAND SURVEYORS STANDARDS FOR A CATEGORY 2, CONDITION II SURVEY WITH THE FOLLOWING EXCEPTION:

- 1) NO DESCRIPTION PREPARED
- 2) NOT ALL CORNERS MARKED

John Douglas Kinels
JOHN DOUGLAS KINELS, PLS #1039
Date: **11-9-1993**



REV 2	1-7-05	ADDED PEDESTRIAN EASEMENT
REV 1	9-29-04	ADD LOTS A & B

LAND TITLE SURVEY
OF PROPERTY AT
523-547 CONGRESS ST., PORTLAND, MAINE
MADE FOR
HEGA REALTY TRUST
218 EAST ROAD, HAMSTAD, NH 03841

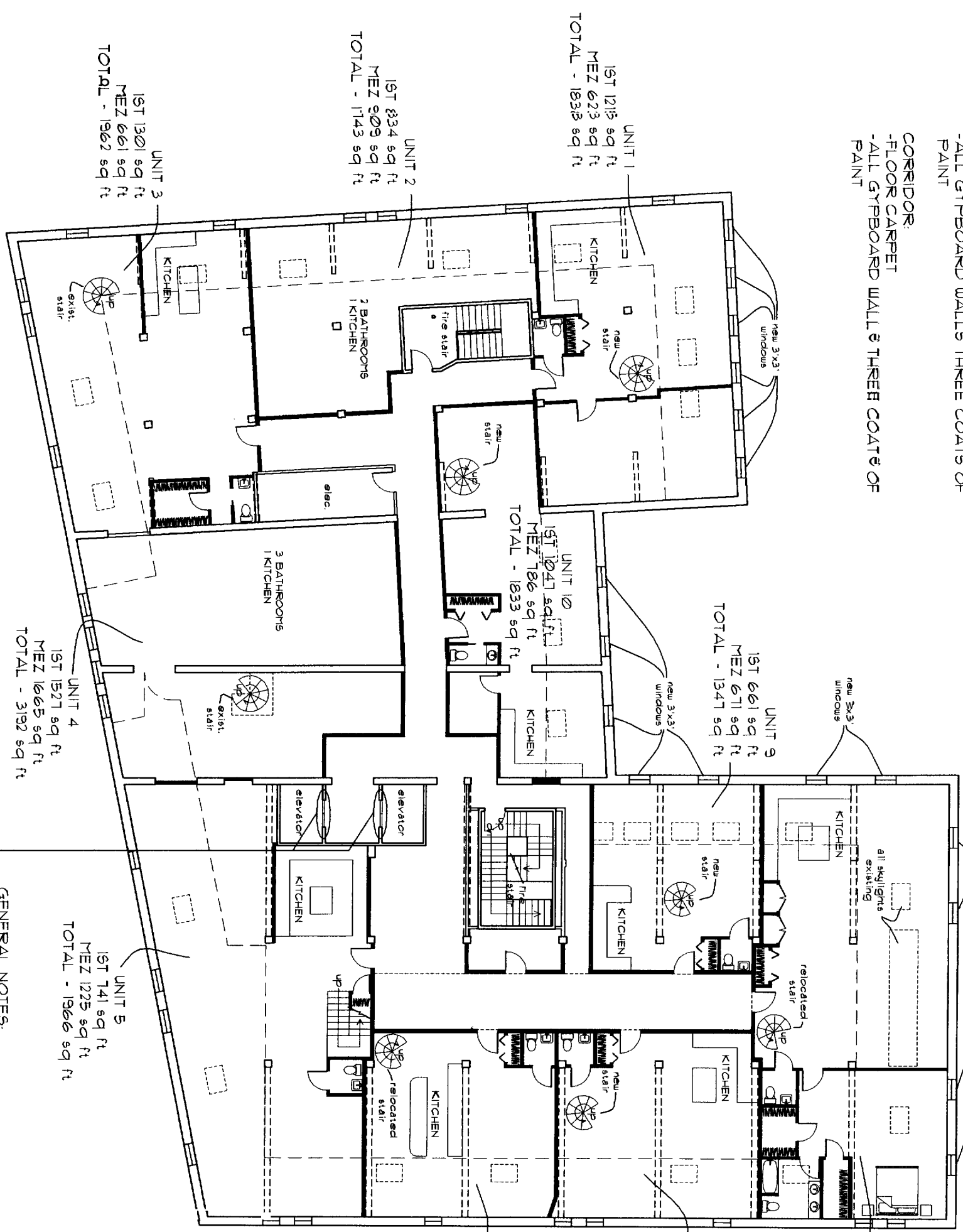
Owen Haskell, Inc.		Land Surveyors	
Civil Engineers 8 Broadway, South Portland, Maine			
Drawn By	DBP	Date	Nov. 9, 1993
Traced By	JLV	Scale	1" = 20'
Checked By	JDK	Job No.	93231P
File No.	332/627	Drawg. No.	1

ROOM FINISH SCHEDULE

- TYPICAL APARTMENT:
 -5th FLOOR ALL HARDWOOD EXCEPT BATHROOMS TO BE CERAMIC TILE
 -ALL GYPBOARD WALLS THREE COATS OF PAINT

- CORRIDOR:
 -FLOOR CARPET
 -ALL GYPBOARD WALL & THREE COATS OF PAINT

- TYPICAL AT NEW OPENINGS:
 -SUPPORT WITH STEEL LINTEL
 -NEW 3'x3' ALUMINUM WINDOWS



UNIT 3
 1ST 1301 sq ft
 MEZ 661 sq ft
 TOTAL - 1962 sq ft

UNIT 2
 1ST 834 sq ft
 MEZ 909 sq ft
 TOTAL - 1743 sq ft

UNIT 1
 1ST 1215 sq ft
 MEZ 623 sq ft
 TOTAL - 1838 sq ft

UNIT 10
 1ST 1041 sq ft
 MEZ 786 sq ft
 TOTAL - 1833 sq ft

UNIT 9
 1ST 661 sq ft
 MEZ 671 sq ft
 TOTAL - 1347 sq ft

UNIT 4
 1ST 1521 sq ft
 MEZ 1665 sq ft
 TOTAL - 3192 sq ft

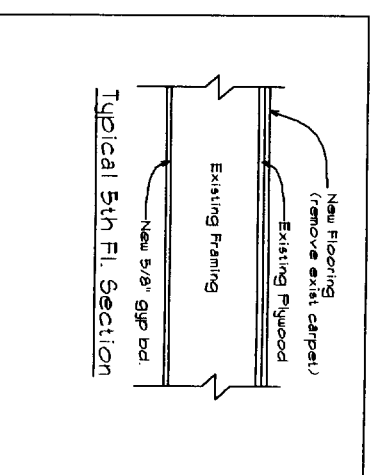
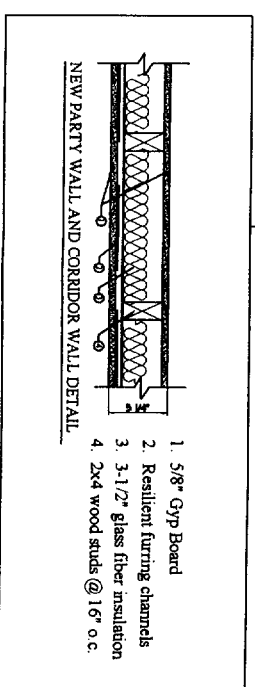
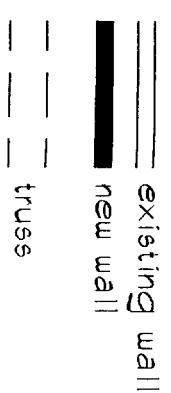
UNIT 5
 1ST 741 sq ft
 MEZ 1225 sq ft
 TOTAL - 1966 sq ft

UNIT 6
 1ST 138 sq ft
 MEZ 502 sq ft
 TOTAL - 1340 sq ft

UNIT 7
 1ST 185 sq ft
 MEZ 530 sq ft
 TOTAL - 1315 sq ft

UNIT 8
 1ST 1124 sq ft
 MEZ 648 sq ft
 TOTAL - 2372 sq ft

- GENERAL NOTES:**
 - PROVIDE STROKE LOUVERS AT ELEVATOR DOORS (PER 2003 IBC CODE) ALL OPENINGS ENTIRE BUILDING
 - CARRY ALLOWANCE OF \$2500 PER OPENING



A1

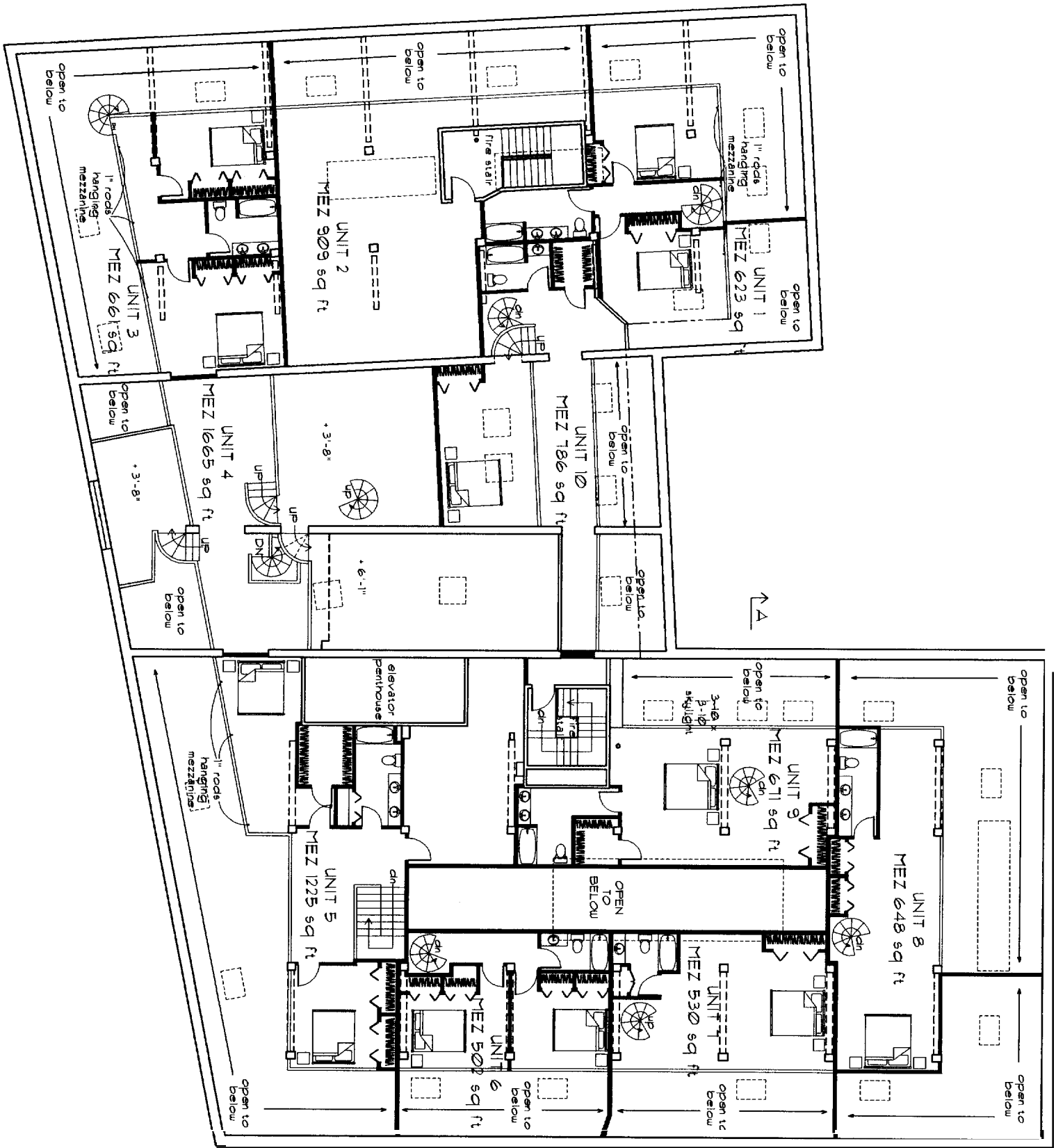
5TH FLOOR PLAN

Date	Scale
April 2005	1/8" = 1'
Revisions:	

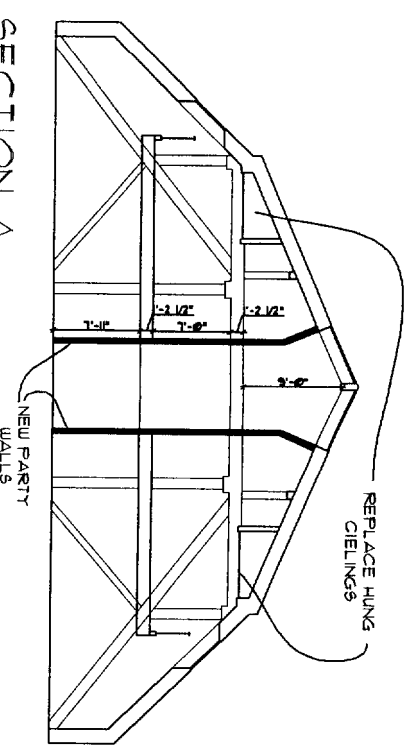
Project:
J.B. BROWN
 DESIGN/ARCHITECT



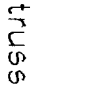
ARCHETYPE, P.A.
ARCHITECTS
 48 Union Wharf Portland, Maine 04101
 (207) 7724022 Fax (207) 7724056

OWNER:



SECTION A



 existing wall
 new wall
 truss

A2	MEZZANINE PLAN	Date: April 2005 Revisions:	Scale: 1/8" = 1' Project:	ARCHETYPE, P.A. ARCHITECTS 48 Union Wharf Portland, Maine 04101 (207) 772-6022 Fax (207) 7724056	OWNER:
			J.B. BROWN CONGRESS ST PORTLAND, MAINE		