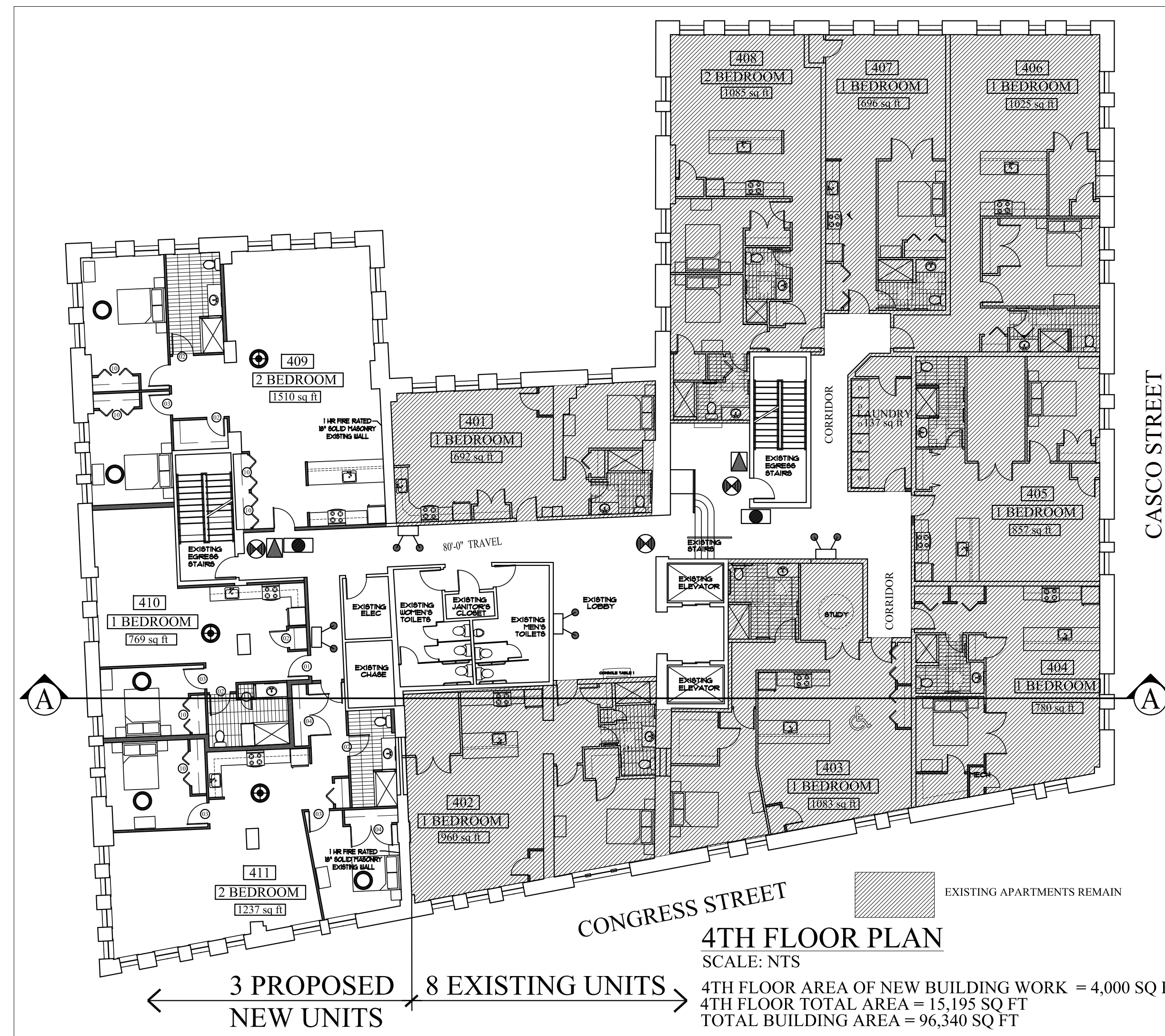
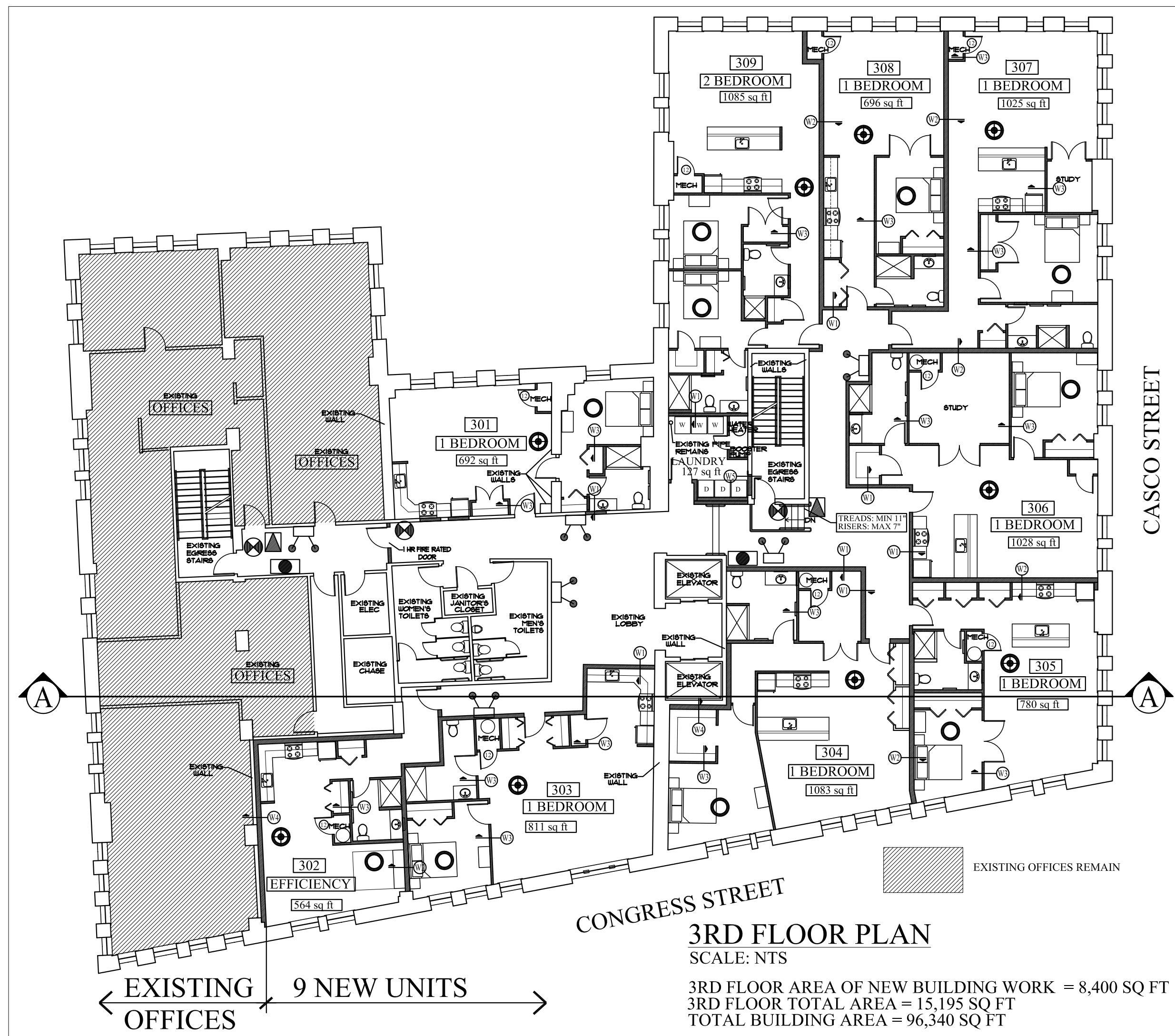


J B BROWN BUILDING

531-537 CONGRESS STREET
PORTLAND MAINE

3RD AND 4TH FLOOR APARTMENTS



DRAWING LIST

STRUCTURAL DRAWINGS	
S1	FLOOR FRAMING PLAN
S2	FLOOR FRAMING DETAILS
ARCHITECTURAL DRAWINGS	
LS-1	LIFE SAFETY PLANS
A1.0	THIRD FLOOR PLAN & SCHEDULES
A1.1	FOURTH FLOOR PLAN & SCHEDULES
A2.0	DETAIL THIRD FLOOR PART PLAN
A2.1	DETAIL THIRD FLOOR PART PLAN
A2.2	DETAIL FOURTH FLOOR PLAN
A3.0	REFLECTED CEILING PLANS
A4.0	WALL & FLOOR TYPES
A5.0	THIRD FLOOR INTERIOR ELEVATIONS
A5.1	FOURTH FLOOR INTERIOR ELEVATIONS

CONTACTS

Architect:
Archetype Architects
48 Union Wharf
Portland, ME
04101
(207) 772-6022

RELEVANT CODES

INTERNATIONAL BUILDING CODE 2009	REFERENCE
OCCUPANCY R-2 (RESIDENTIAL)	310
CONSTRUCTION TYPE 3B	T601
BUILDING SPRINKLED NFPA 13	903.3.1.2
ALLOWABLE AREA - 16,000 SQ.FT.	T503
PROPOSED FLOOR AREA (15,195 SQ.FT.)	
ALLOWABLE HEIGHT (5) STORIES (4 STORY TABULAR HGT. PLUS 1 STORY SPRINKLER INCREASE)	T503
PROPOSED HEIGHT (5) STORIES	504.2
FIRE RESISTANCE RATING STRUCTURAL FRAME (0 HOUR)	T601
FIRE RESISTANCE RATING EXTERIOR BEARING WALLS (2 HOUR)	T601
FIRE RESISTANCE RATING INTERIOR BEARING WALLS (0 HOUR)	T601
FIRE RESISTANCE RATING NON-BEARING WALLS AND PARTITIONS (0 HOURS)	T601
FIRE RESISTANCE RATING FLOOR CONSTRUCTION (0 HOUR)	T601
FIRE RESISTANCE RATING ROOF CONSTRUCTION (0 HOUR)	T601

FIRE PARTITIONS	REFERENCE
CORRIDOR FIRE PARTITION (NONBEARING) - 1/2 HR	708.1
CORRIDOR DOORS .33 HOURS IN 1/2 HOUR WALL	T-1018.1
CORRIDOR DOORS TO HAVE SMOKE CONTROL	T-715.4
DWELLING UNIT SEPARATION - 1/2 HR	715.4.3.1
	709.3 (EX. 2)
ELEVATOR LOBBIES NOT REQUIRED FOR FIRE ALARM REQUIRED	
	708.14.1 (EX. 4)
	907.2.9
	907.2.10.2
SMOKE DETECTORS REQUIRED	
	708.14.1 (EX. 4)
	907.2.9
	907.2.10.2
REQUIRED SEPARATION OF OCCUPANCY R-2 & B = 1 HR	
	T-508.4
	1207.2
MEANS OF EGRESS MIN REQUIRED CORRIDOR WIDTH - 44"	
	1018.2

NFPA 101 - 2009	REFERENCE
OCCUPANCY - RESIDENTIAL	NFPA 6.1.8
CONSTRUCTION TYPE III(200)	NFPA TABLE A.8.2.1.2
BUILDING SPRINKLED NFPA 13	
CORRIDORS SHALL HAVE A MINIMUM WIDTH OF 44 INCHES	30.2.3.3
AREA OF REFUGE NOT REQUIRED	30.2.2.12.2
TRAVEL DISTANCE WITHIN DWELLING UNIT < 125 FT	30.2.6.2
TRAVEL DISTANCE FROM UNIT TO EXIT < 200 FT	30.2.6.3.2
DEAD END CORRIDORS < 50 FT	30.2.5.4.2
COMMON PATH OF TRAVEL < 50 FT	30.2.5.3.2
EMERGENCY LIGHTING REQUIRED	30.2.9
FIRE ALARM SYSTEM IS REQUIRED	30.3.4.1.1
SMOKE ALARMS ARE REQUIRED	30.3.4.5
EXTINGUISHMENT SYSTEM IS REQUIRED	30.3.5.1
CORRIDOR WALLS SHALL HAVE A MINIMUM 1/2 HOUR FIRE RATING	30.3.6.1.2
CORRIDOR DOORS SHALL HAVE A MINIMUM 1/3 HOUR FIRE RATING	30.3.6.2.1
CORRIDOR DOORS SHALL BE SELF CLOSING AND SELF LATCHING	30.3.6.2.3
DWELLING UNIT SEPARATION WALLS SHALL HAVE MIN 1/2 HR RATING	30.3.7.2

