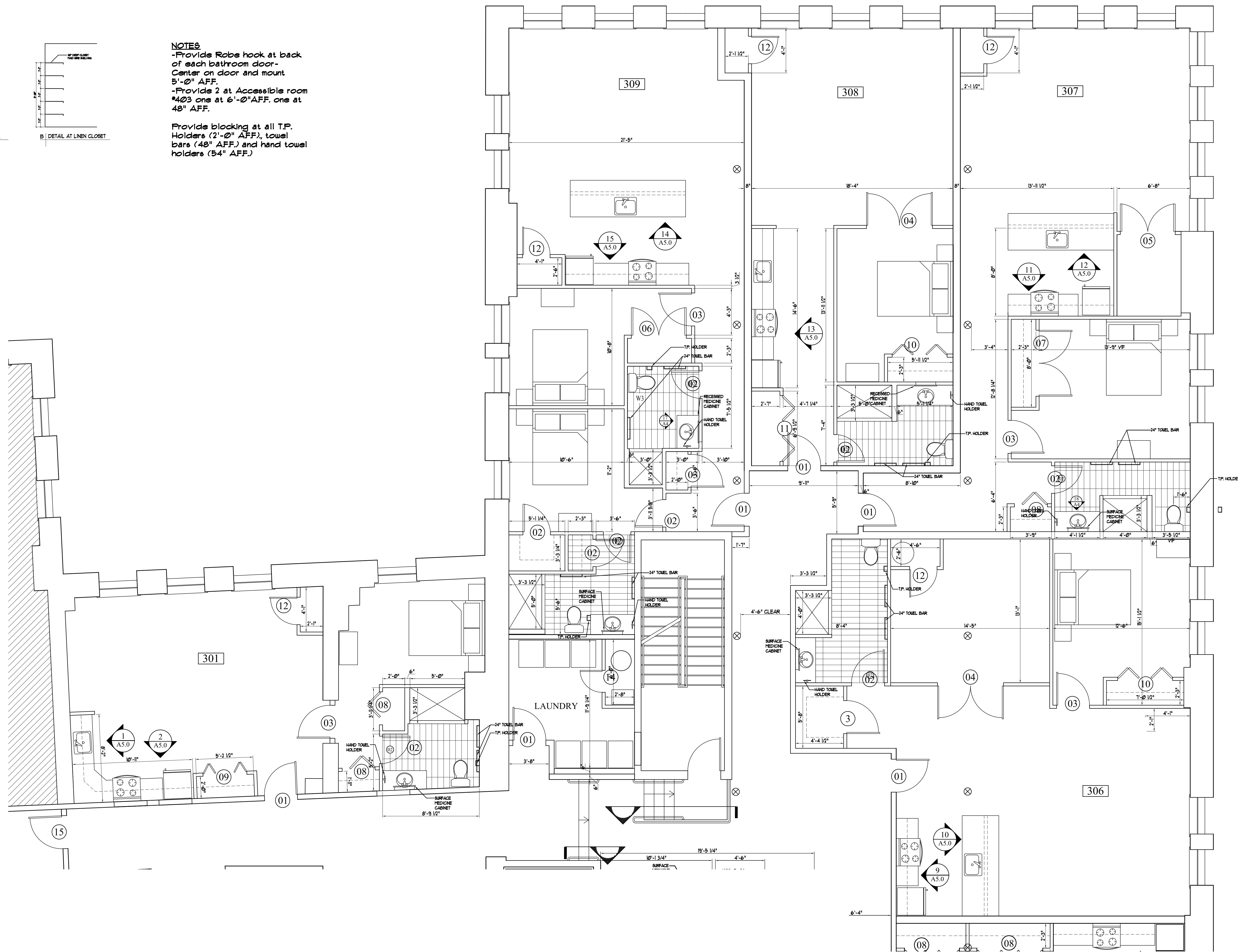


**NOTES**  
 -Provide Robe hook at back of each bathroom door- Center on door and mount 5'-0" AFF.  
 -Provide 2 at Accessible room #403 one at 6'-0" AFF, one at 48" AFF.

Provide blocking at all T.P. Holders (2'-0" AFF), towel bars (48" AFF) and hand towel holders (54" AFF.)



Owner:	
Consulting Engineer:	
Architect:	<b>ARCHETYPE</b> architects 48 Union Wharf Portland, Maine 04101 (207) 772-6022 Fax (207) 772-4056
Project:	<b>J.B. BROWN BUILDING</b> 537 CONGRESS STREET PORTLAND, ME
Revisions:	
Date:	16 April 2013
Scale:	1/4" = 1'-0"
<b>THIRD FLOOR DETAIL UNIT PLANS</b>	
<b>A2.0</b>	