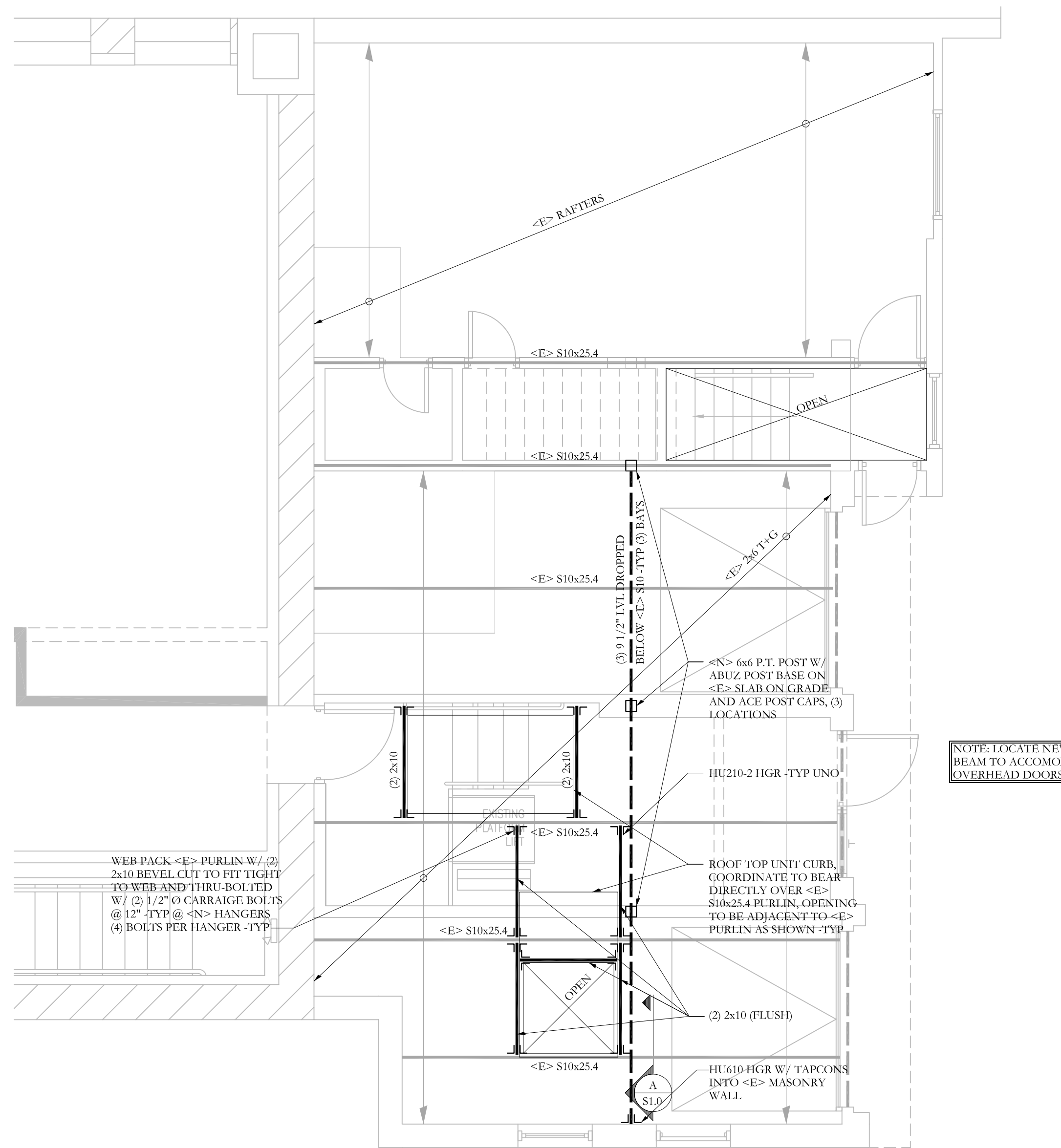
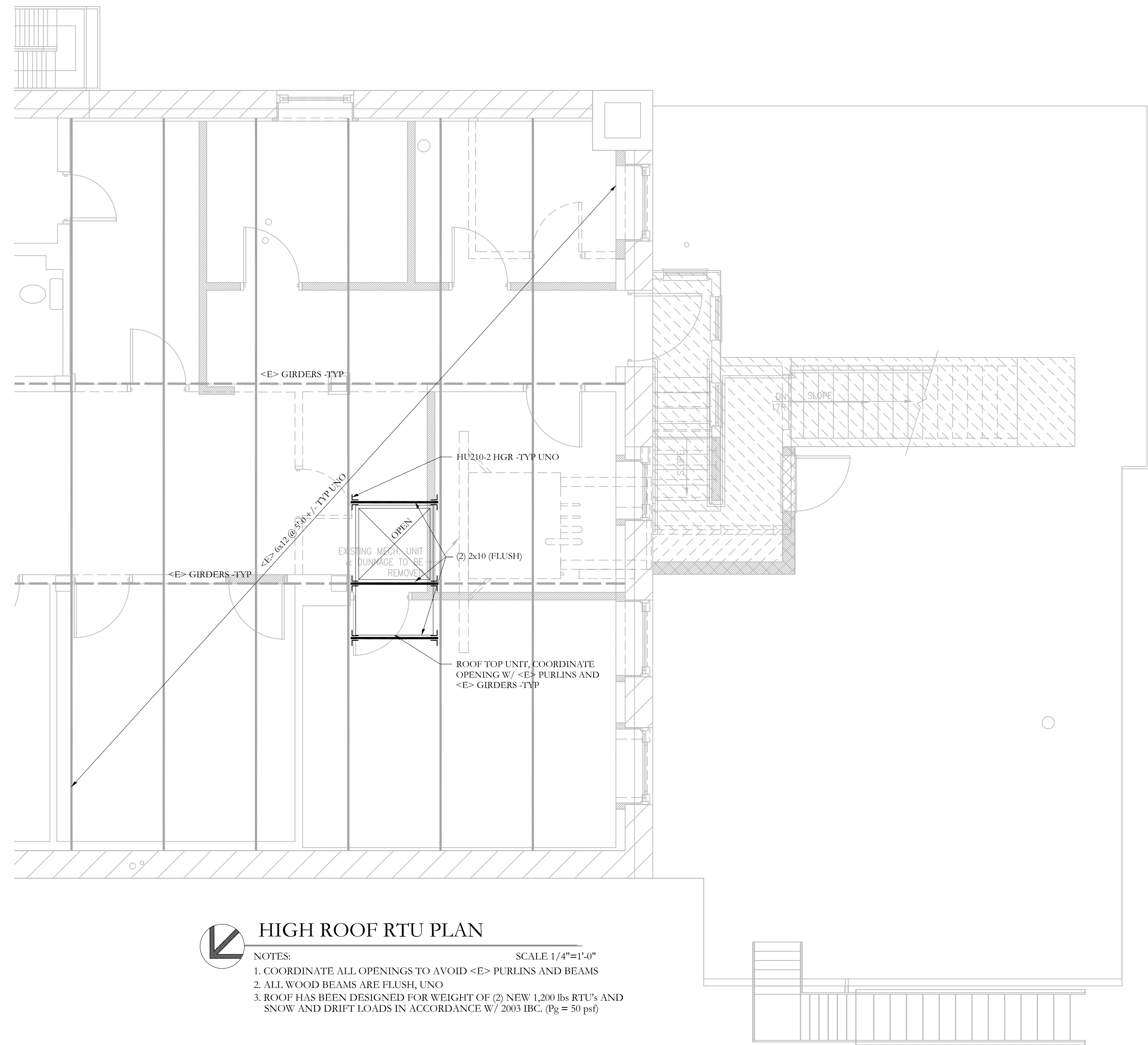


SECTION **A** S1.0 3/4"=1'-0"



LOW ROOF RTU PLAN
 NOTES: SCALE 1/4"=1'-0"
 1. COORDINATE ALL OPENINGS TO AVOID <E> PURLINS AND BEAMS
 2. ALL WOOD BEAMS ARE FLUSH UNO
 3. ROOF HAS BEEN DESIGNED FOR WEIGHT OF (1) NEW 1,200 lbs RTU'S AND SNOW AND DRIFT LOADS IN ACCORDANCE W/ 2003 IBC. (Pg = 50 psf)



HIGH ROOF RTU PLAN
 NOTES: SCALE 1/4"=1'-0"
 1. COORDINATE ALL OPENINGS TO AVOID <E> PURLINS AND BEAMS
 2. ALL WOOD BEAMS ARE FLUSH UNO
 3. ROOF HAS BEEN DESIGNED FOR WEIGHT OF (2) NEW 1,200 lbs RTU'S AND SNOW AND DRIFT LOADS IN ACCORDANCE W/ 2003 IBC. (Pg = 50 psf)

BARBÄ+WHELOCK
 ARCHITECTURE
 PRESERVATION
 DESIGN
 500 CONGRESS STREET
 PORTLAND, MAINE 04101
 FAX 207.772-3667
 TEL 207.772-2722
 SH#07-0069
Structural Integrity
 Consulting Engineers, Inc.
 77 Oak Street
 Portland, ME, 04101
 p. 207-774-4614
 f. 866-793-7835
 www.structuralinteg.com
 BUILD WITH CONFIDENCE
 © 2007 Structural Integrity Consulting Engineers, Inc.

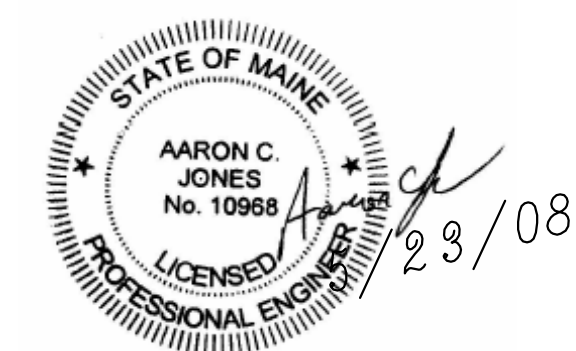
16 CASCO STREET
 portland, maine

Title:
**NEW ROOF TOP UNIT
 REINFORCEMENT PLAN**

Project No: 200706
 Date: MAY 23, 2008
 Revisions:

PERMITTING AND
 CONSTRUCTION
 Issued For:

Drawing No:



S1.0