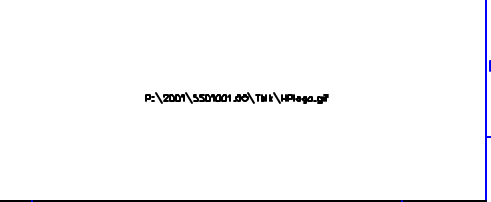


KEYED NOTES

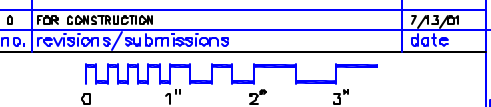
KEYED NOTES area containing specific notes related to the drawing, likely detailing material specifications or installation requirements for the lighting fixtures and components.

GENERAL NOTES

1. FOR SYMBOLS AND GENERAL NOTES, SEE DWG E001
2. FOR PANELBOARD SCHEDULE, SEE DWG E501, E502, AND E503
3. FOR LIGHTING FIXTURE SCHEDULE, SEE DWG E501
4. LIGHTING FIXTURES ARE SHOWN IN APPROXIMATE LOCATIONS. INSTALLATION TO BE COORDINATED WITH OTHER DISCIPLINES TO PREVENT INTERFERENCES.
5. FOR SEISMIC BRACING, REFER TO DETAIL "X" ON SHEET "EBOX"
6. ALL PENETRATIONS SHOULD BE COORDINATED WITH STRUCTURAL DRAWINGS AND STRUCTURAL ENGINEER.



0	FOR CONSTRUCTION	7/13/01
no.	revisions/submissions	date



Einhorn Yaffee Prescott ARCHITECTURE & ENGINEERING, P.C.
 2001/5501001.00/T11/1849a.dwg
 7/13/01
 1849A.DWG
 7/13/01

CommTel Data Center
 380 Cumberland Avenue
 Portland, Maine

drawing title
ROOF LIGHTING PLAN

designed by	D.F.	project no.	5501001.00
drawn by	I.D.	CAD file no.	2001/5501001.00/ELEC/CTL-E102
checked by	SA	drawing no.	E102
date	7/13/01		
scale	1/8"=1'-0"		