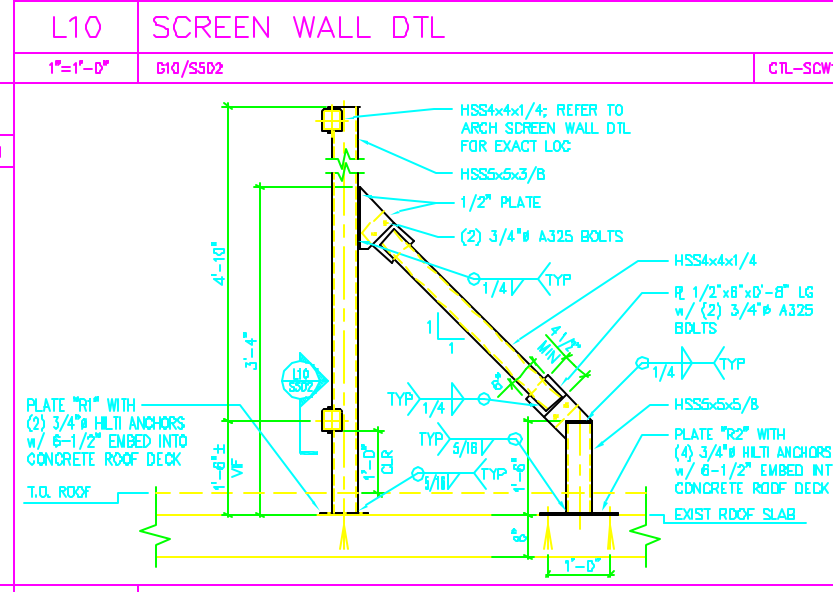
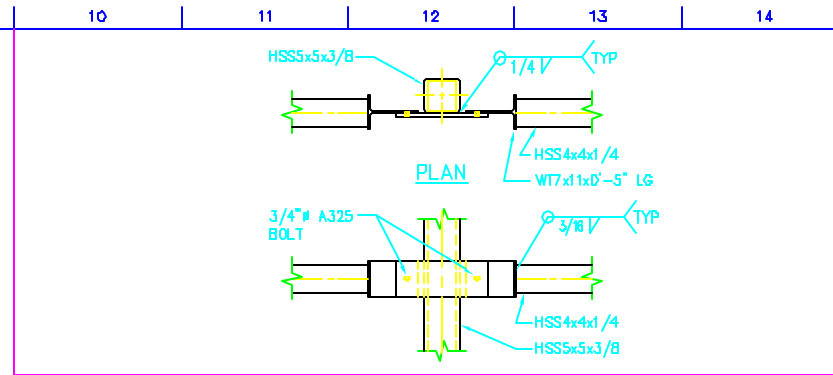
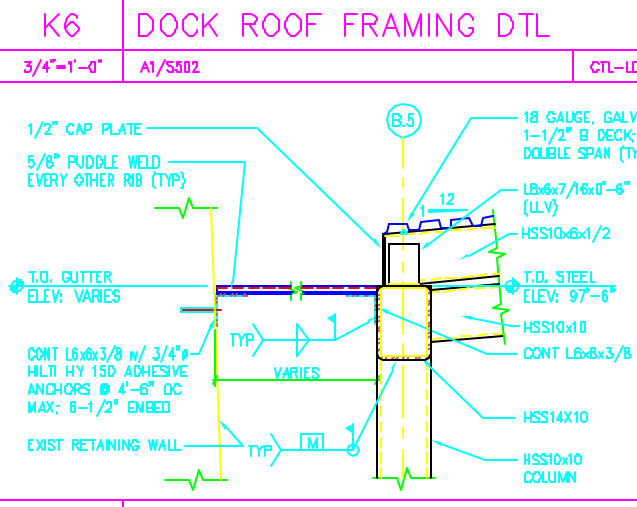
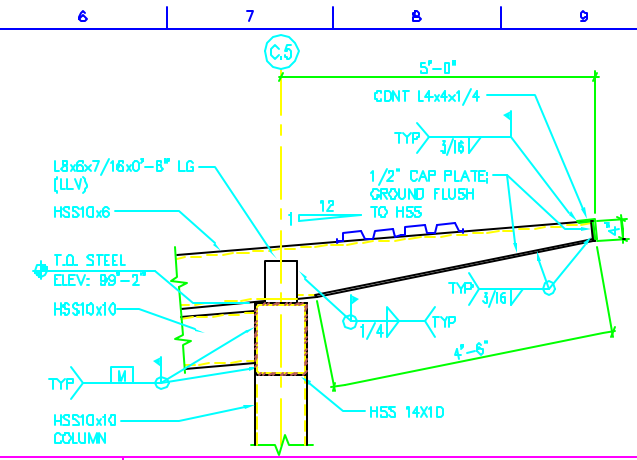


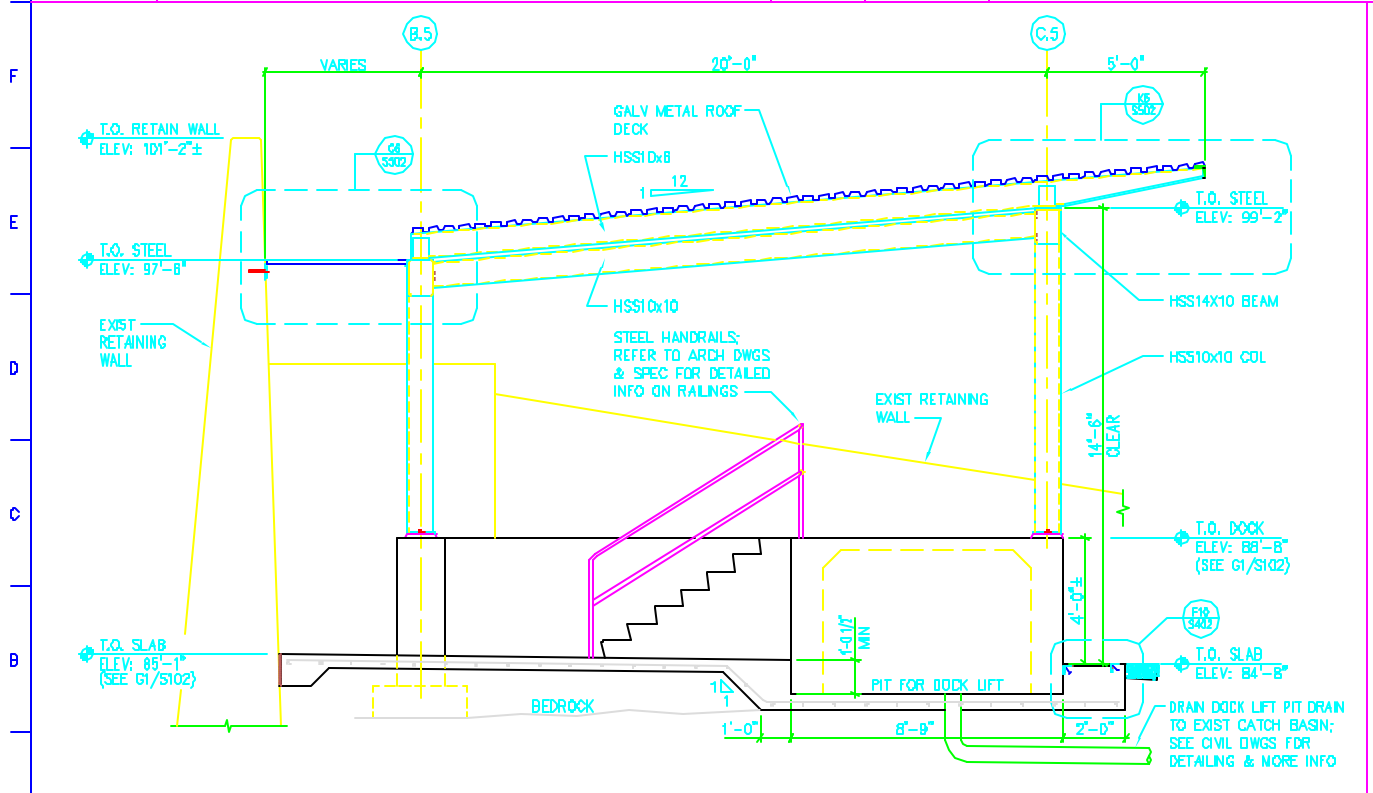
- NOTES:**
- REMOVE ALL LIVE LOADING FROM FLOOR ABOVE AND DO NOT CORE/CUT SLAB UNTIL NEW STRUCTURAL MEMBERS ARE IN PLACE. SHORE FLOOR SO TO BE LEVEL & TRUE. USE EXPANSIVE GROUT AS NEEDED TO PROVIDE CONTINUOUS CONTACT OF THE NEW STEEL BEAM TO THE EXISTING SLAB.
 - CONTRACTOR SHALL LOCATE EXISTING REINFORCEMENT (NON-DESTRUCTIVE TESTING) PRIOR TO DRILLING HOLES FOR EMBEDMENT SO AS NOT TO SEVER ANY OF THE EXIST COLUMN REINFORCEMENT. IF REINFORCEMENT IS CUT, CONTACT STRUCTURAL ENGR IMMEDIATELY.



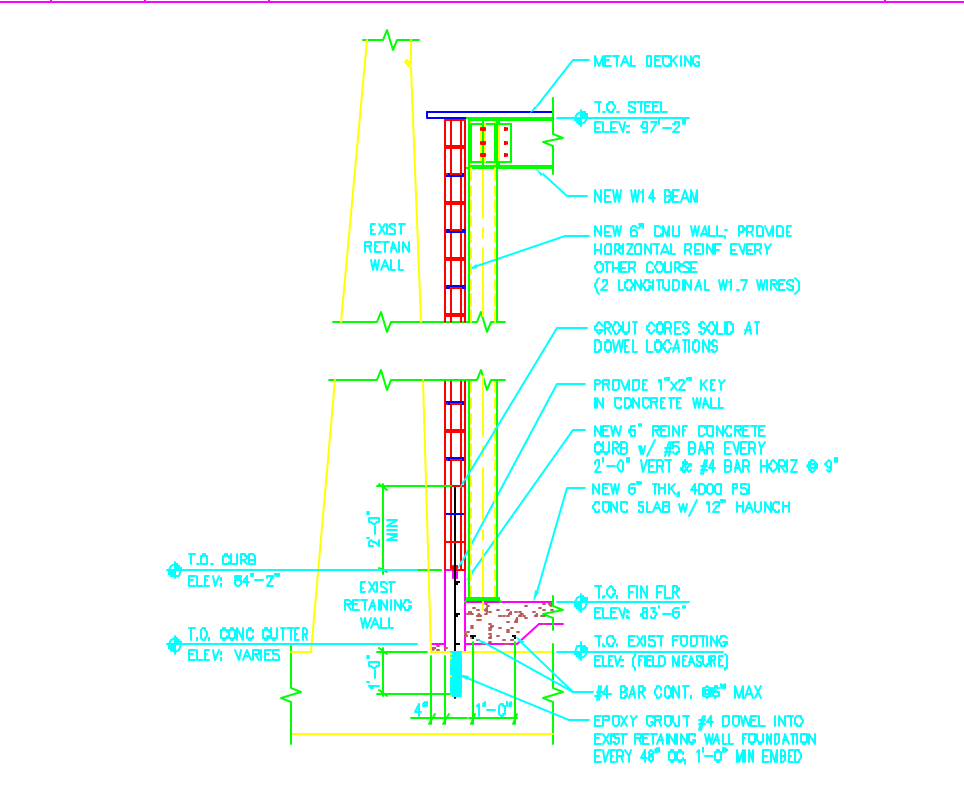
G1 UPS CABLE BUS 2ND FLOOR SLAB PENT
3/4"=1'-0" A1/S201 CTL-PEN1

K6 DOCK ROOF FRAMING DTL
3/4"=1'-0" A1/S502 CTL-LDS1

L10 SCREEN WALL DTL
1"=1'-0" G10/S502 CTL-SCW1



A1 SECTION AT LOADING DOCK
3/8"=1'-0" A1/S201 CTL-DSEC



A9 SECTION AT NEW CMU WALL
1/2"=1'-0" A1/S101, A1/S201 CTL-WSEC

P:\2001\550100100\Title\FRogo.rvt

0	FOR CONSTRUCTION	7/13/01
no.	revisions/submissions	date

Einhorn Yaffee Prescott ARCHITECTURE & ENGINEERING, P.C.
THIRTY-FOUR BECKLEY STREET, PORTLAND, MA 02801 617.588-1866
ALIGNED BY SEE 1010, P.12. LISA HARRIS, CL. ENGINE PLANNED BY BRADSHAW, INC. BRADSHAW, VA. BRADSHAW, VA.

CommTel Data Center
380 Cumberland Avenue
Portland, Maine

drawing title

MISCELLANEOUS DETAILS & SECTIONS

designed by	project no.
IF	5501001.00
drawn by	CAD file no.
RT	CTL-S503.DWG
checked by	drawing no.
SB	S502
date	07/13/01
scale	AS NOTED
	of