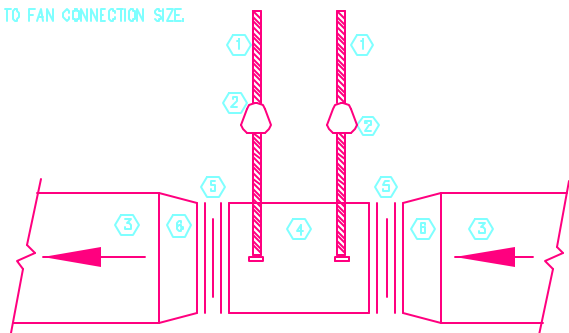
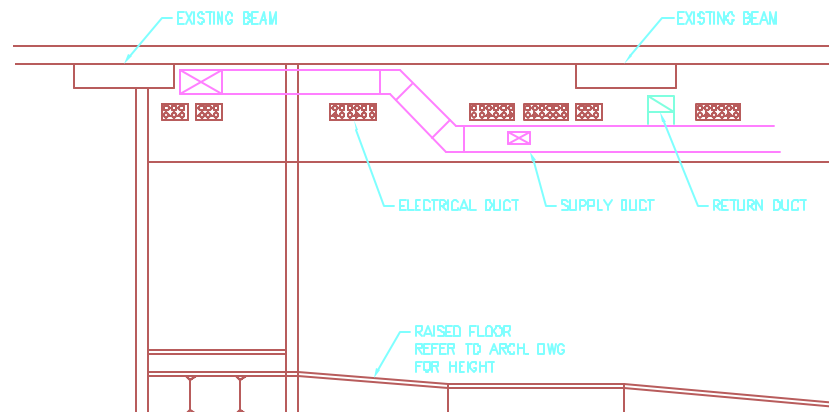


- ① HANGER RODS TO STRUCTURE ABOVE
- ② VIBRATION ISOLATORS
- ③ DUCT SIZE AS SHOWN ON PLAN
- ④ IN-LINE FAN
- ⑤ FLEXIBLE CONNECTION
- ⑥ TRANSITION PIECE FROM DUCT SIZE TO FAN CONNECTION SIZE



J1 IN-LINE FAN DETAIL

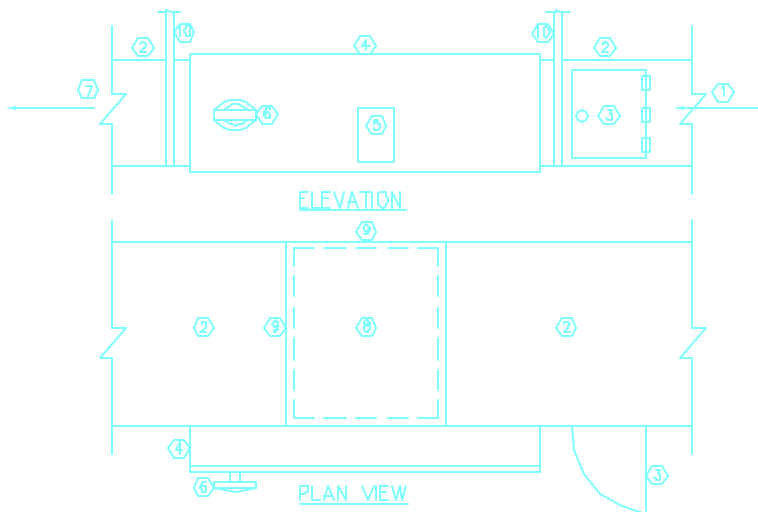
N.T.S.



J6 CORRIDOR SECTION OF HVAC DUCT WORK

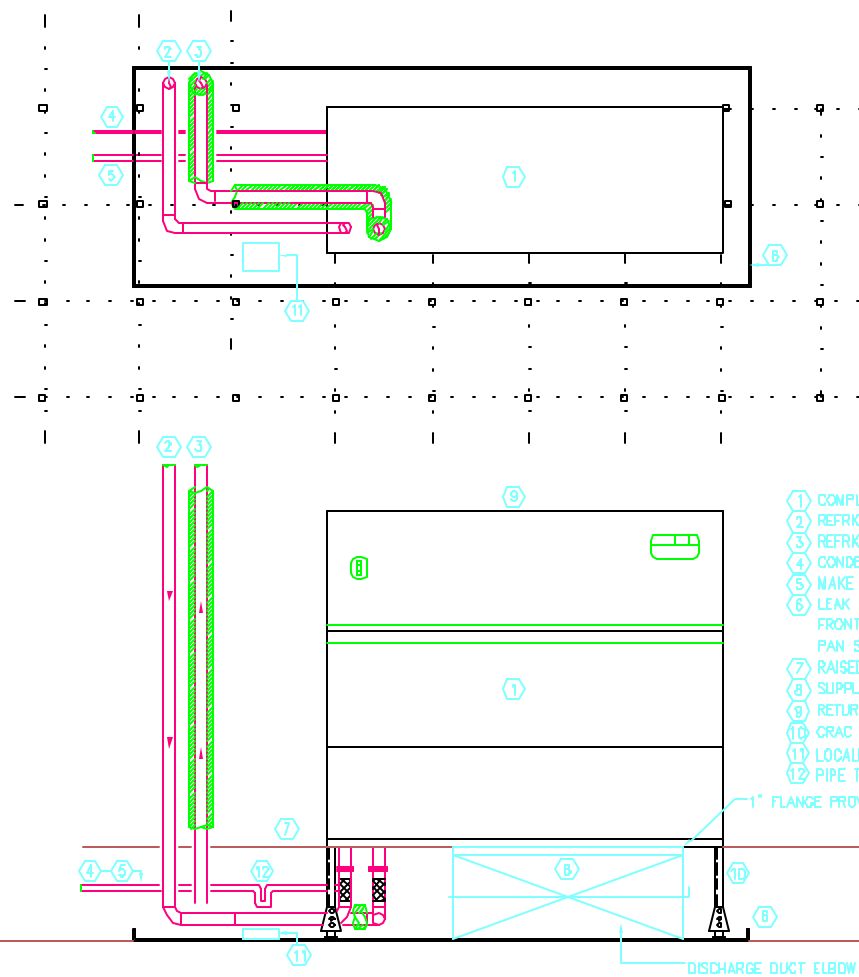
N.T.S.

- ① INTAKE AIR
- ② DUCTWORK
- ③ AIR TIGHT ACCESS DOOR TO ALLOW OBSERVATION OF HEATER. SIZE SUITABLE FOR DUCTWORK NOT LESS THAN 6"x6".
- ④ CONTROL BOX
- ⑤ NAME PLATE
- ⑥ HANDLE
- ⑦ OUTLET AIR
- ⑧ ELECTRIC REHEAT COIL SLIP IN TYPE
- ⑨ SEAL OFF BETWEEN HEATER AND DUCT
- ⑩ DUCTWORK SHOULD BE SUPPORTED INDEPENDENTLY OF THE COIL SO THAT THE COIL MAY BE REMOVED FOR SERVICE.



A1 ELECTRIC REHEAT COIL DETAIL

N.T.S.



A6 COMPUTER ROOM AIR CONDITIONER DETAIL

N.T.S.

P:\2001\550100100\Title\Fig01.dwg

0	FOR CONSTRUCTION	7/13/01
no.	revisions/submissions	date



Einhorn Yaffee Prescott ARCHITECTURE & ENGINEERING, P.C.
 THIRTY-FOUR BECKA STREET
 PORTLAND, ME 04108 87.388-1866
 LICENSE NO. 0021796, P.E. BANGOR, ME. ENGINE PLANS BY BANGOR, ME. LICENSE NO. 0021796, P.E.

CommTel Data Center
 380 Cumberland Avenue
 Portland, Maine

drawing title
HVAC DETAILS

seal	designed by JML	project no. 5501001.00
	drawn by JML	CAD file no. P:2000\5501001\HVAC
	checked by WOK	drawing no. H501
	date 07/13/01	
	scale AS NOTED	of