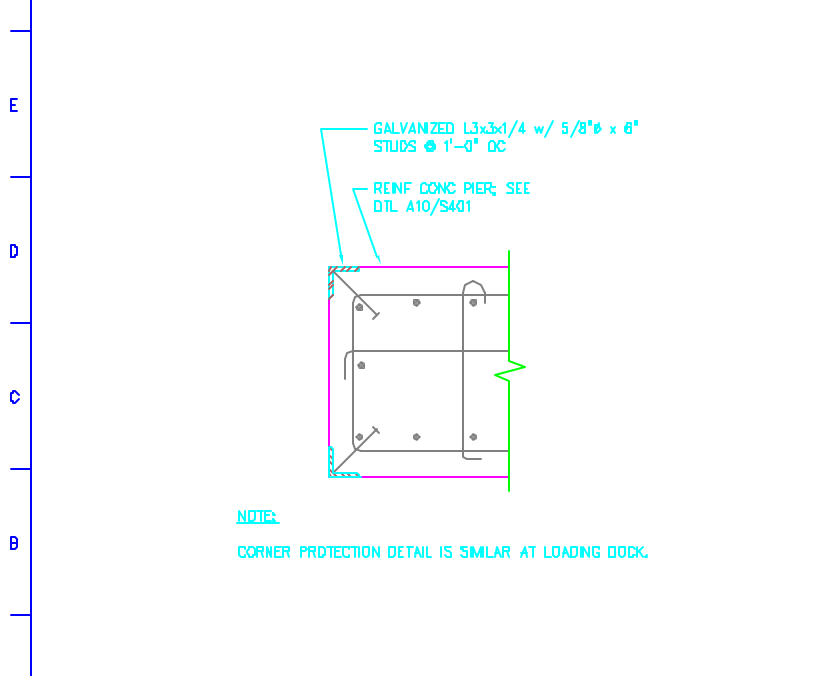
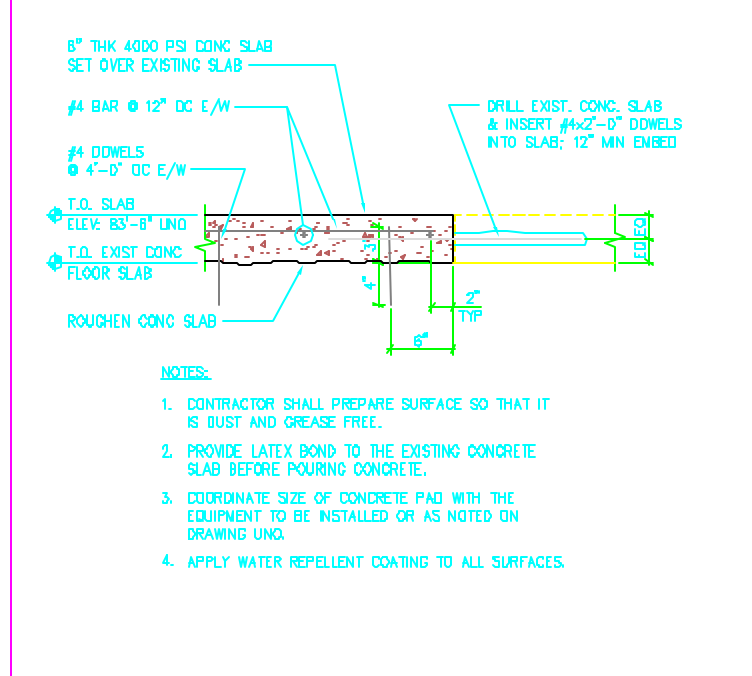


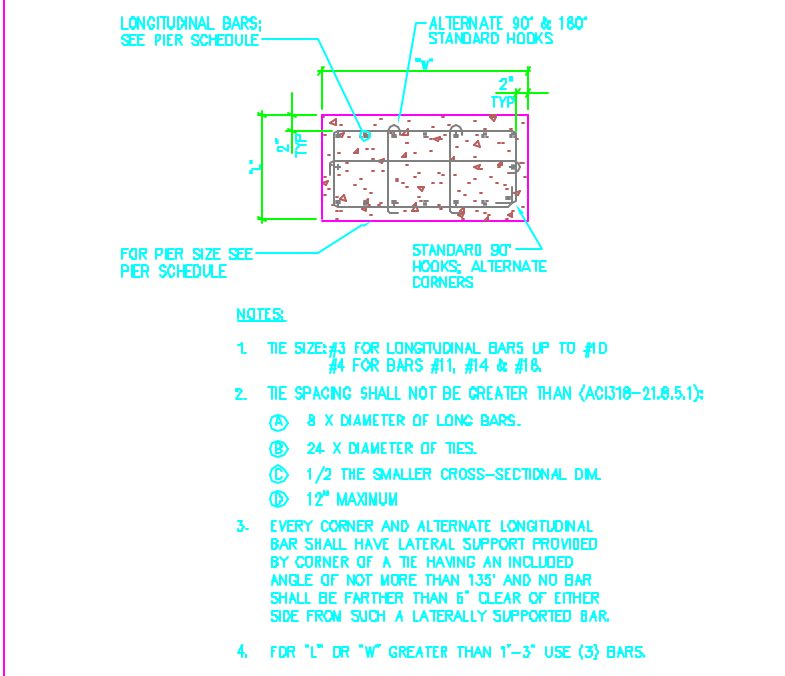
F1	TYP FOUNDATION WALL SECTION	F5	PIER & FOOTING AT LOADING DOCK	F10	PIER & FOOTING AT ADDITION
3/4"=1'-0"	A1/S101	3/4"=1'-0"	A1/S101	3/4"=1'-0"	A1/S101
	CTL-FWAL		CTL-TC2		CTL-TC3



A1	CORNER PROTECTION FOR EXTERIOR PIER
1 1/2"=1'-0"	CTL-PCNR



A5	TYP CONCRETE PAD DETAIL
1 1/2"=1'-0"	CTL-CPDI



A10	TYP CONCRETE PIER DTL
3/4"=1'-0"	CTL-CSEC

P:\2001\350100100\Tbk\FFLogo.gif

0	FOR CONSTRUCTION	7/13/01
no.	revisions/submissions	date

**Einhorn Yaffee Prescott** ARCHITECTURE & ENGINEERING, P.C.  
THIRTY-FOUR SCHOOL STREET, PORTLAND, ME 04108 87.388-1886  
 AGENCY OF THE STATE OF MAINE, PORTLAND, ME  
 LICENSE NO. 1000000000

**CommTel Data Center**  
 380 Cumberland Avenue  
 Portland, Maine

drawing title

**FOUNDATION DETAILS & SECTIONS**

designed by	SB	project no.	5501001.00
drawn by	RT	CAD file no.	CTL-S401.DWG
checked by	SB	drawing no.	S401
date	07/13/01		
scale	AS NOTED		