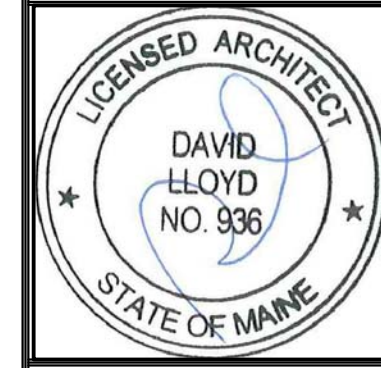
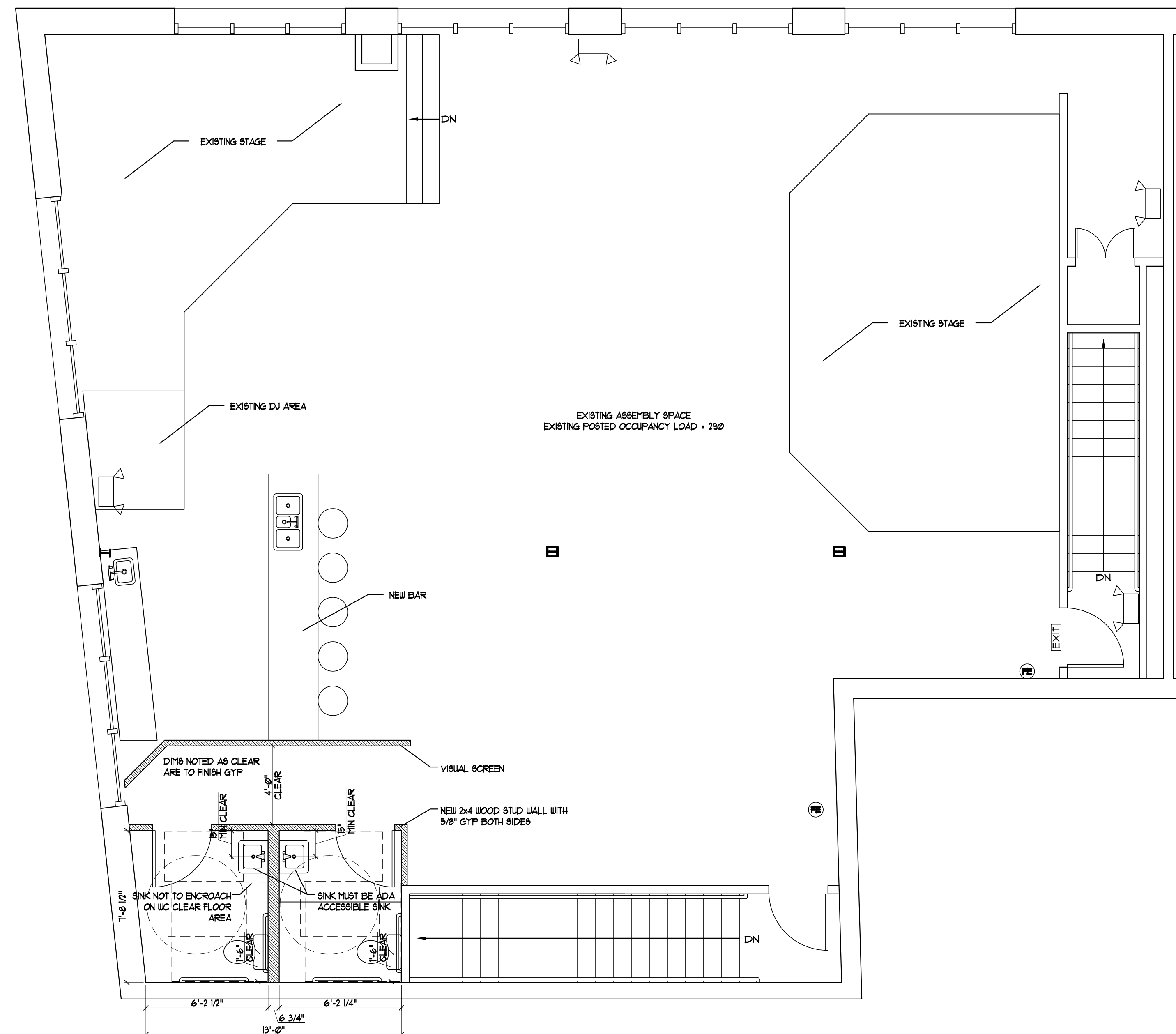


LEGEND:

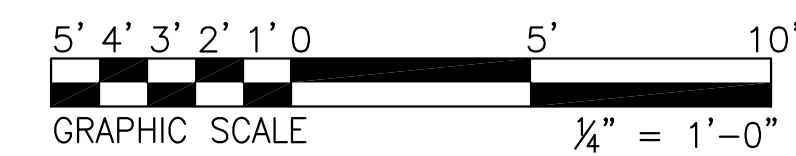
2 HEAD EMERGENCY LIGHT	
EXIT SIGN	
FIRE EXTINGUISHER	
EXISTING WALL	
NEW WALL	



- BUILDING IS FULLY SPRINKLED
- RELOCATING BAR
- TWO NEW ADA BATHROOMS



1 | PROPOSED SECOND FLOOR PLAN - 2,533 GROSS SQ.FT.
SCALE: 1/4"=1'-0"



Consulting Engineer:

Architect:
ARCHETYPE
architects
 48 Union Wharf Portland, Maine 04101
 (207) 772-6022 Fax (207) 772-4056

Project:
EMPIRE
 575 CONGRESS STREET
 PORTLAND, MAINE

Revisions:

Date: 03 JULY 2013
 Scale: 1/4" = 1'-0"
SECOND FLOOR
PLAN
MODIFICATIONS

A2