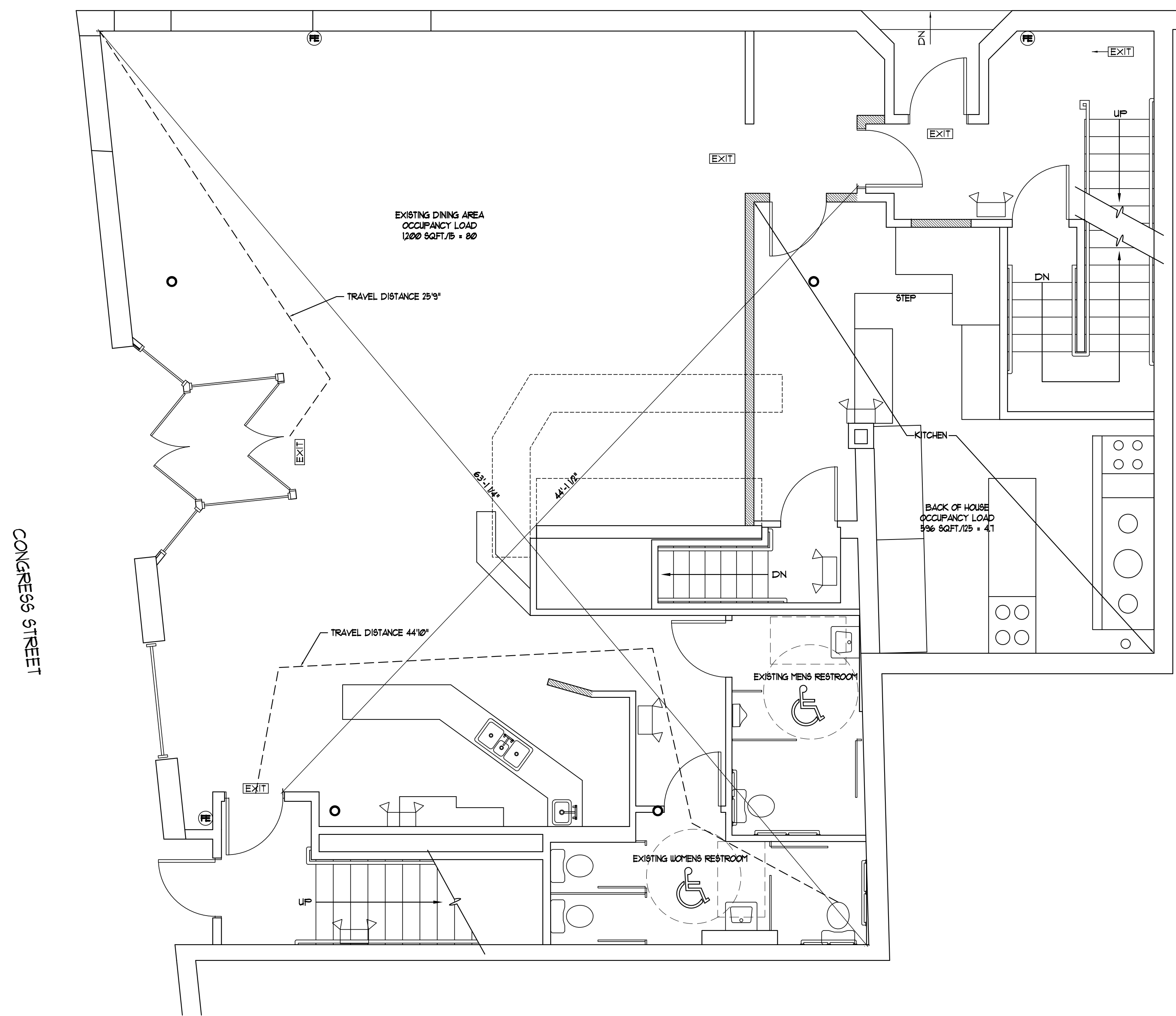


LIFE SAFETY CODE SUMMARY

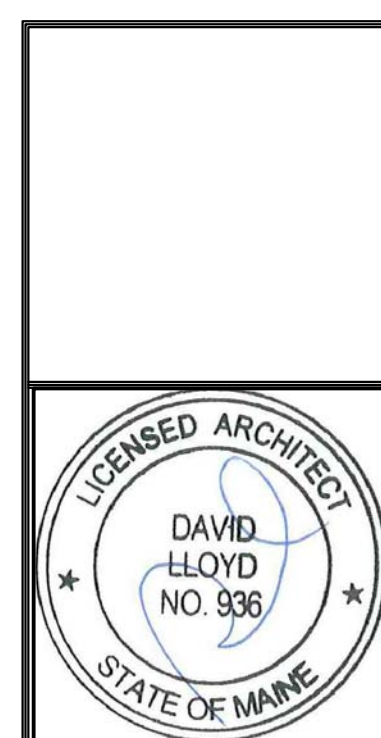
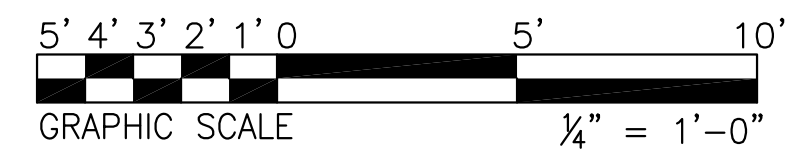
GROUP A  
 TOTAL GROSS SQUARE FOOTAGE IS: 2,399 SF  
 OCCUPANCY LOAD IS:  
 EXISTING DINING AREA 1,000 SQFT. @ 15 GSF PER PERSON = 80 PEOPLE NFPA 1312  
 EXISTING ASSEMBLY SPACE POSTED OCCUPANCY LOAD = 290 PEOPLE  
 MAX TRAVEL DISTANCE TO FIRE EXTINGUISHER IS 15 FT. NFPA 10

LEGEND:

2 HEAD EMERGENCY LIGHT	
EXIT SIGN	
FIRE EXTINGUISHER	
EXISTING WALL	
NEW WALL	



1 | FIRST FLOOR LIFE SAFETY PLAN  
 SCALE: 1/4"=1'-0"



Consulting Engineer:

Architect: **ARCHETYPE** architects  
 48 Union Wharf Portland, Maine 04101  
 (207) 772-6022 Fax (207) 772-4056

Project: **EMPIRE**  
 575 CONGRESS STREET  
 PORTLAND, MAINE

Revisions:


Date: 03 JULY 2013  
 Scale: 1/4" = 1'-0"  
**FIRST FLOOR LIFE SAFETY PLAN**

**A3**