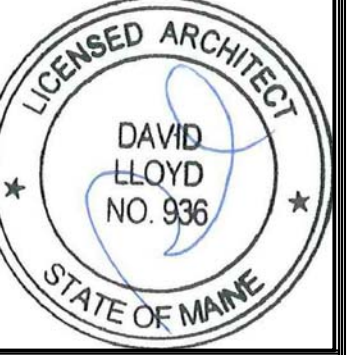


LEGEND:

2 HEAD EMERGENCY LIGHT	
EXIT SIGN	
FIRE EXTINGUISHER	
EXISTING WALL	
NEW WALL	



Consulting Engineer:

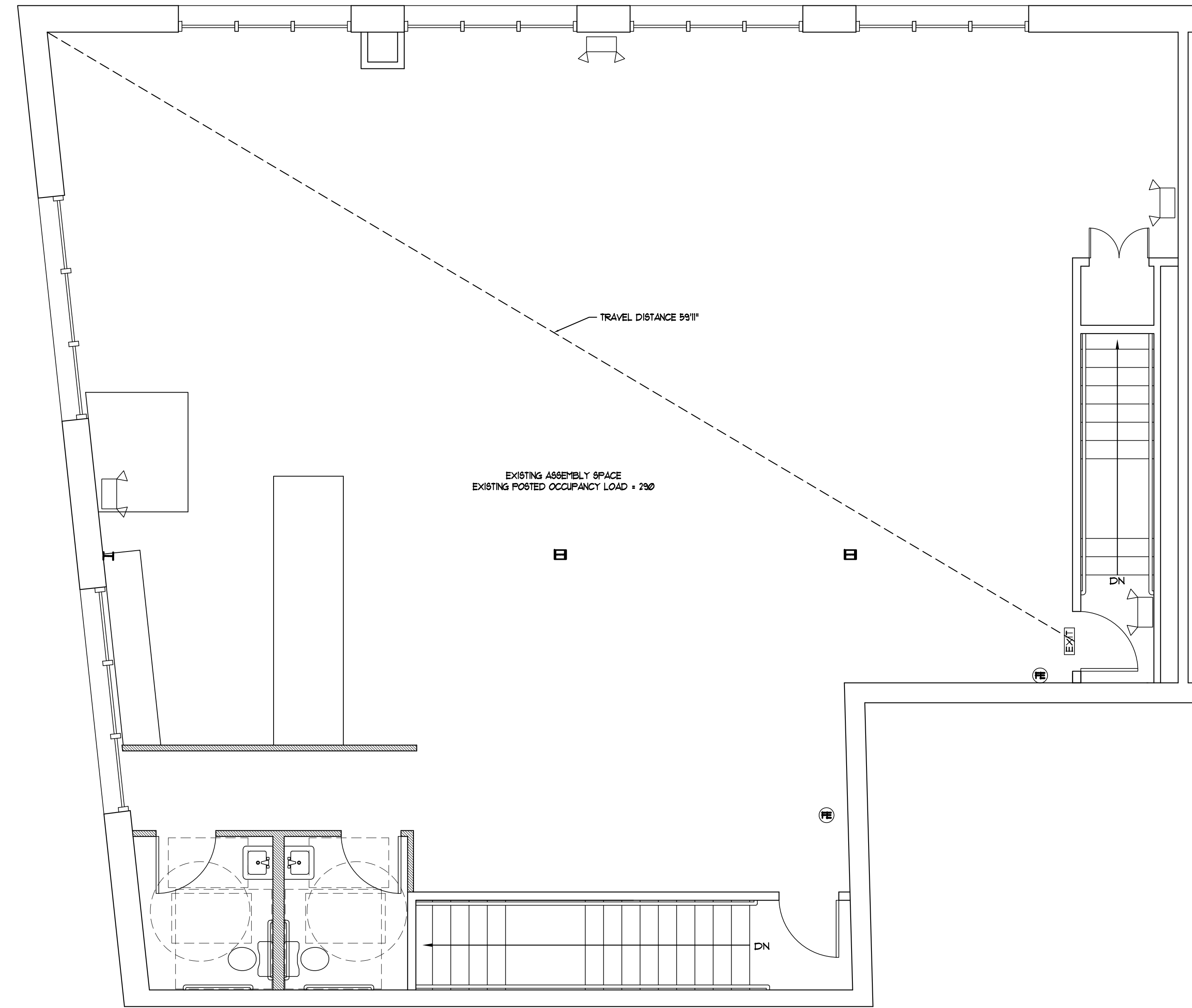
Architect:  
**ARCHETYPE**  
*a r c h i t e c t s*  
 48 Union Wharf Portland, Maine 04101  
 (207) 772-6022 Fax (207) 772-4056

Project:  
**EMPIRE**  
 575 CONGRESS STREET  
 PORTLAND, MAINE

Revisions:


Date: 04 JUNE 2013  
 Scale: 1/4" = 1'-0"  
**SECOND FLOOR LIFE  
 SAFETY PLAN**

**A4**



1 | SECOND FLOOR LIFE SAFETY PLAN  
 SCALE: 1/4"=1'-0"

