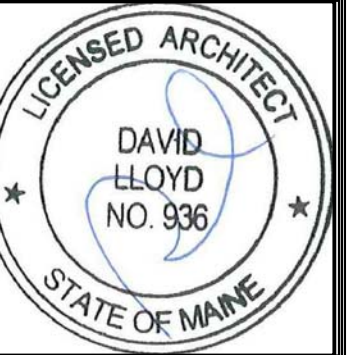


LIFE SAFETY CODE SUMMARY

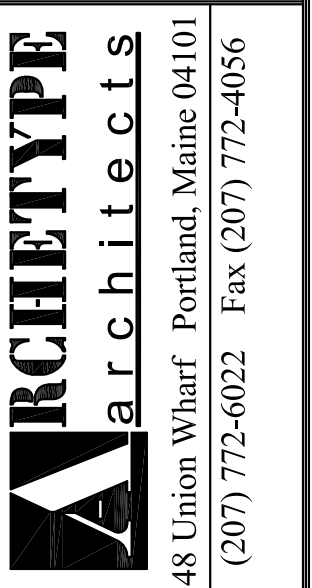
GROUP A  
 TOTAL GROSS SQUARE FOOTAGE IS: 2,399 SF  
 OCCUPANCY LOAD IS:  
 EXISTING DINING AREA 1,000 SQFT. @ 15 GSF PER PERSON = 80 PEOPLE NFPA 1312  
 EXISTING ASSEMBLY SPACE POSTED OCCUPANCY LOAD = 200 PEOPLE  
 MAX TRAVEL DISTANCE TO FIRE EXTINGUISHER IS 15 FT. NFPA 10

LEGEND:

2 HEAD EMERGENCY LIGHT	
EXIT SIGN	
FIRE EXTINGUISHER	
EXISTING WALL	
NEW WALL	



Consulting Engineer:



Architect:

Project: **EMPIRE**  
 575 CONGRESS STREET  
 PORTLAND, MAINE

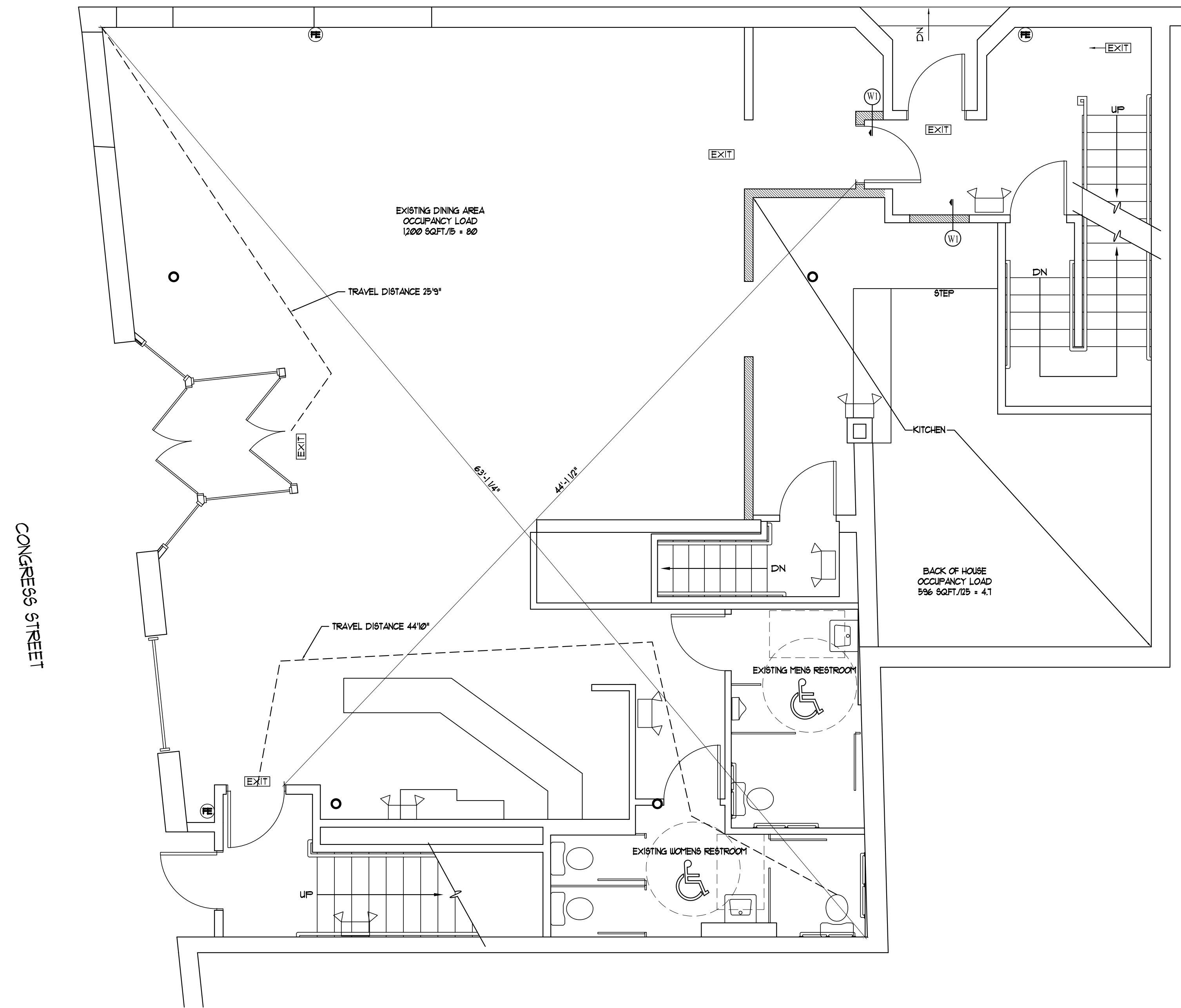
Revisions:

Date: 04 JUNE 2013

Scale: 1/4" = 1'-0"

FIRST FLOOR LIFE  
 SAFETY PLAN

A3



1 | FIRST FLOOR LIFE SAFETY PLAN  
 SCALE: 1/4"=1'-0"

