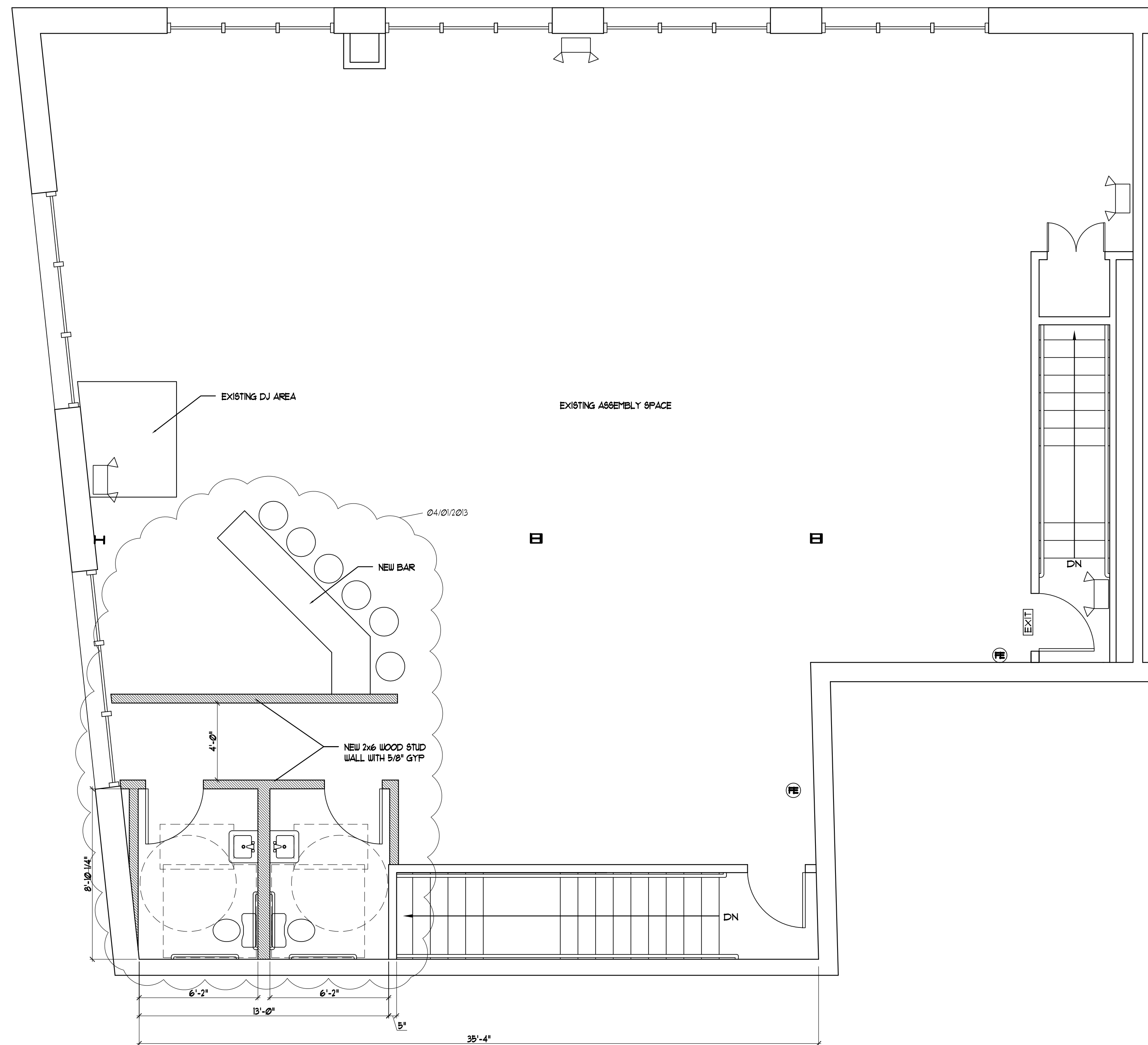
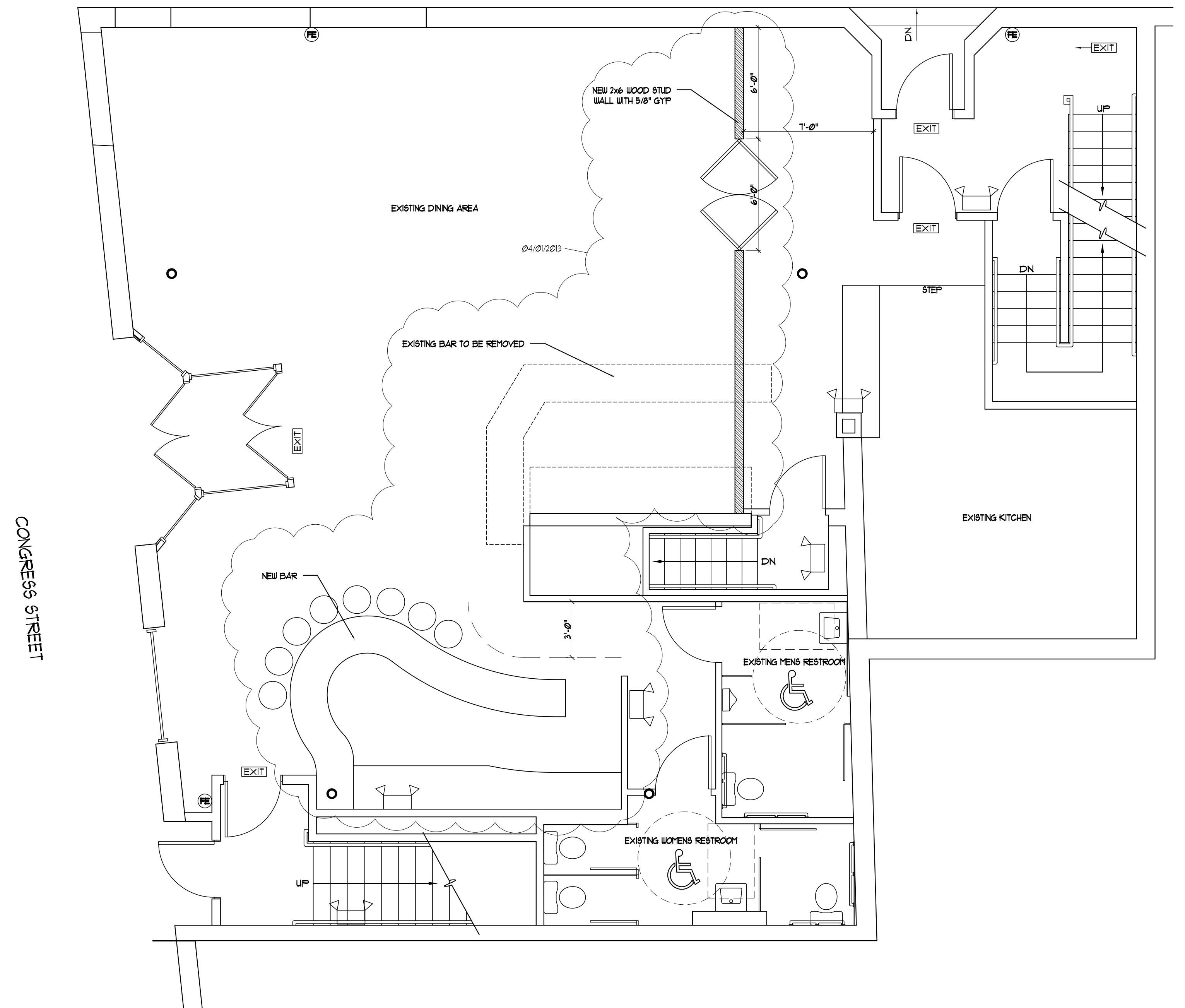


- RELOCATING BAR
- TWO NEW ADA BATHROOMS



2 | PROPOSED SECOND FLOOR PLAN - 2,533 GROSS SQ.FT.  
SCALE: 1/4"=1'-0"

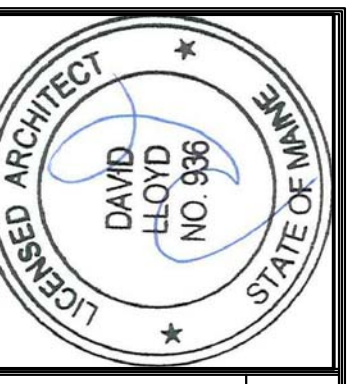
- RELOCATING BAR
- NEW WALL AS INDICATED



1 | PROPOSED FIRST FLOOR PLAN - 2,426 GROSS SQ.FT.  
SCALE: 1/4"=1'-0"

LEGEND:

2 HEAD EMERGENCY LIGHT	
EXIT SIGN	
FIRE EXTINGUISHER	
EXISTING WALL	
NEW WALL	



Prepared For:

Consulting Engineer:

**ARCHETYPE** architects  
48 Union Wharf Portland, Maine 04101  
(207) 772-6022 Fax (207) 772-4056

**EMPIRE**  
575 CONGRESS STREET  
PORTLAND, MAINE

Revisions:


Date: 1 APRIL 2013  
Scale: 1/4" = 1'-0"  
**FLOOR PLAN MODIFICATIONS**

**A1.01**