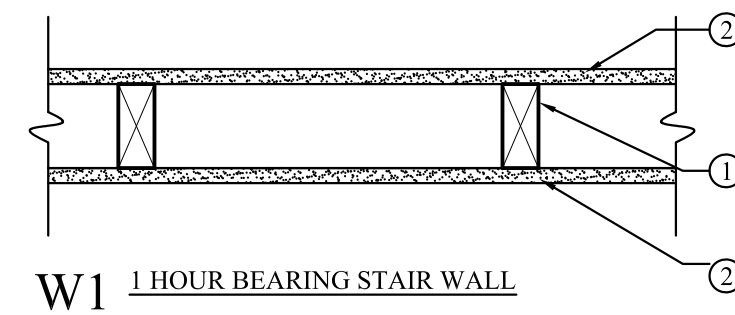


LEGEND:

2 HEAD EMERGENCY LIGHT	
EXIT SIGN	
FIRE EXTINGUISHER	
EXISTING WALL	
NEW WALL	

W1 1-HOUR BEARING WALL ASSEMBLY
 G.A. FILE NO. WP3240
 Fire Test: UL R1319-93, 94, 129± UL Des. U311

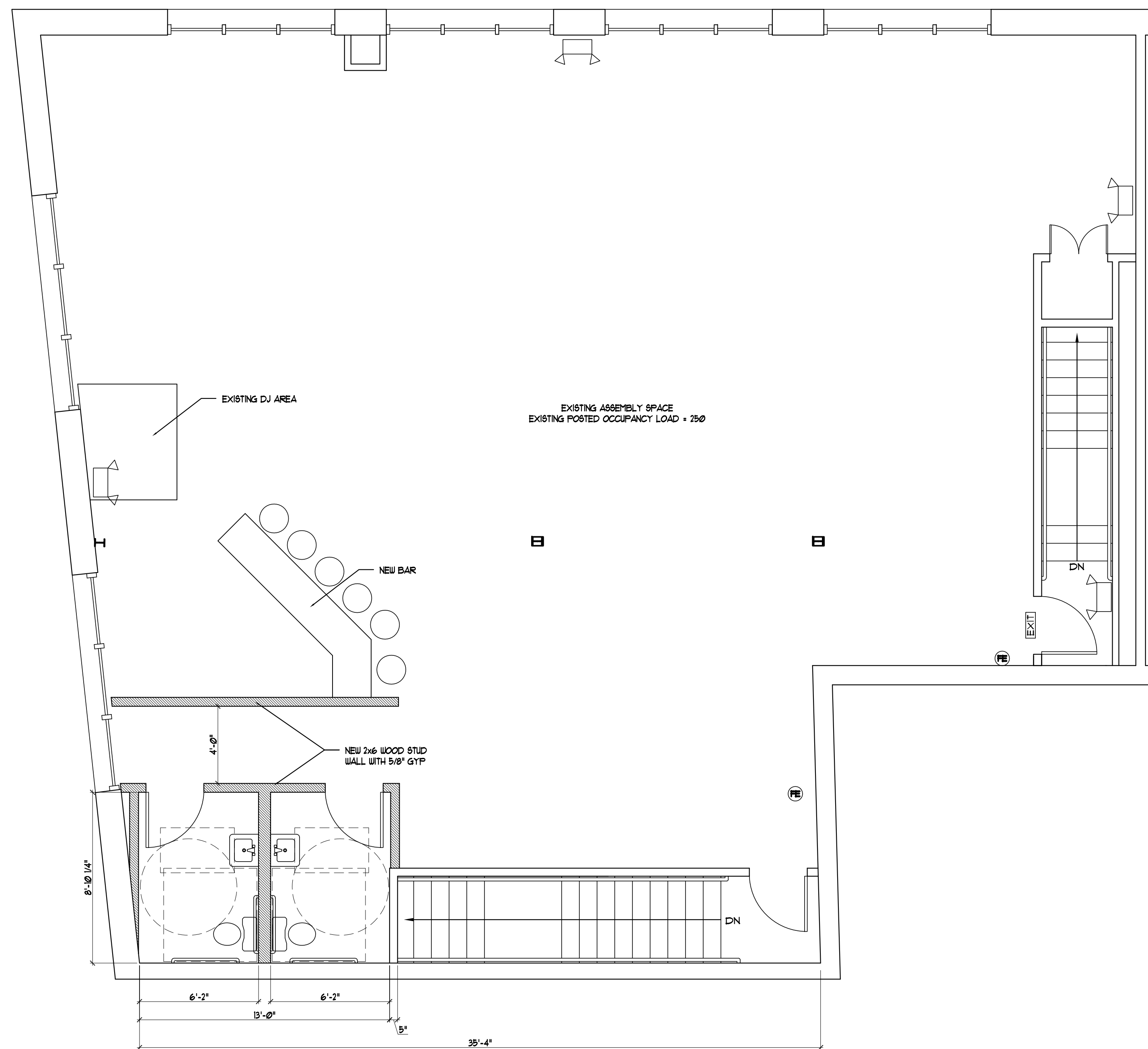
1. Wood Studs -- Nom 2x with two 2x top and one 2x bottom plates.
2. Wallboard, Gypsum -- 5/8" proprietary type X gypsum wallboard applied parallel to channels with 1 1/4" Type W drywall screws 12" o.c. Vertical joints staggered 48" on opposite sides.



W1 1 HOUR BEARING STAIR WALL

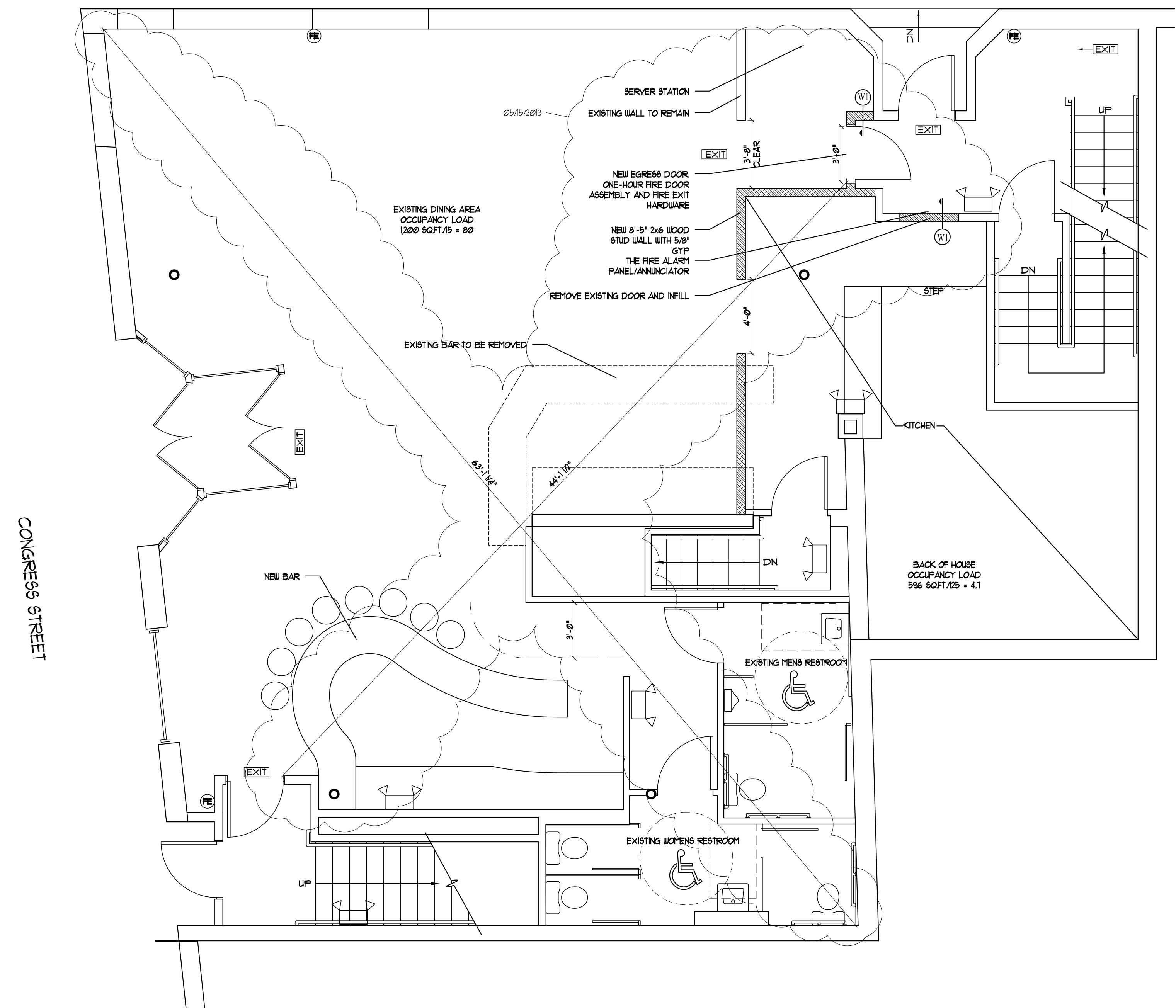
3 1-HOUR BEARING WALL
 SCALE: 1 1/2"=1'-0"

- BUILDING IS FULLY SPRINKLED
- RELOCATING BAR
- TWO NEW ADA BATHROOMS



2 | PROPOSED SECOND FLOOR PLAN - 2,533 GROSS SQ.FT.
 SCALE: 1/4"=1'-0"

- BUILDING IS FULLY SPRINKLED
- RELOCATING BAR
- NEW WALL AND EGRESS DOOR AS INDICATED



1 | PROPOSED FIRST FLOOR PLAN - 2,426 GROSS SQ.FT.
 SCALE: 1/4"=1'-0"



Consulting Engineer:

Architect: **ARCHETYPE** architects
 48 Union Wharf Portland, Maine 04101
 (207) 772-6022 Fax (207) 772-4056

Project: **EMPIRE**
 575 CONGRESS STREET
 PORTLAND, MAINE

Revisions:

Date: 20 May 2013
 Scale: 1/4" = 1'-0"

FLOOR PLAN
 MODIFICATIONS

A1.01