

© 2013 RYAN SENATORE ARCHITECTURE

STRAND BUILDING - FACADE RENOVATION
565 CONGRESS STREET
PORTLAND, MAINE



RYAN SENATORE ARCHITECTURE
67 GRAY ROAD
GORHAM, MAINE 04038
207-650-6414
senatorearchitecture.com

CONSULTANTS:

REVISIONS:

DATE: JUNE 27, 2013

PROJECT No.

DRAWN BY:

CHECKED BY: RJS

SCALE: AS NOTED

SHEET TITLE:

DEMOLITION ELEVATION

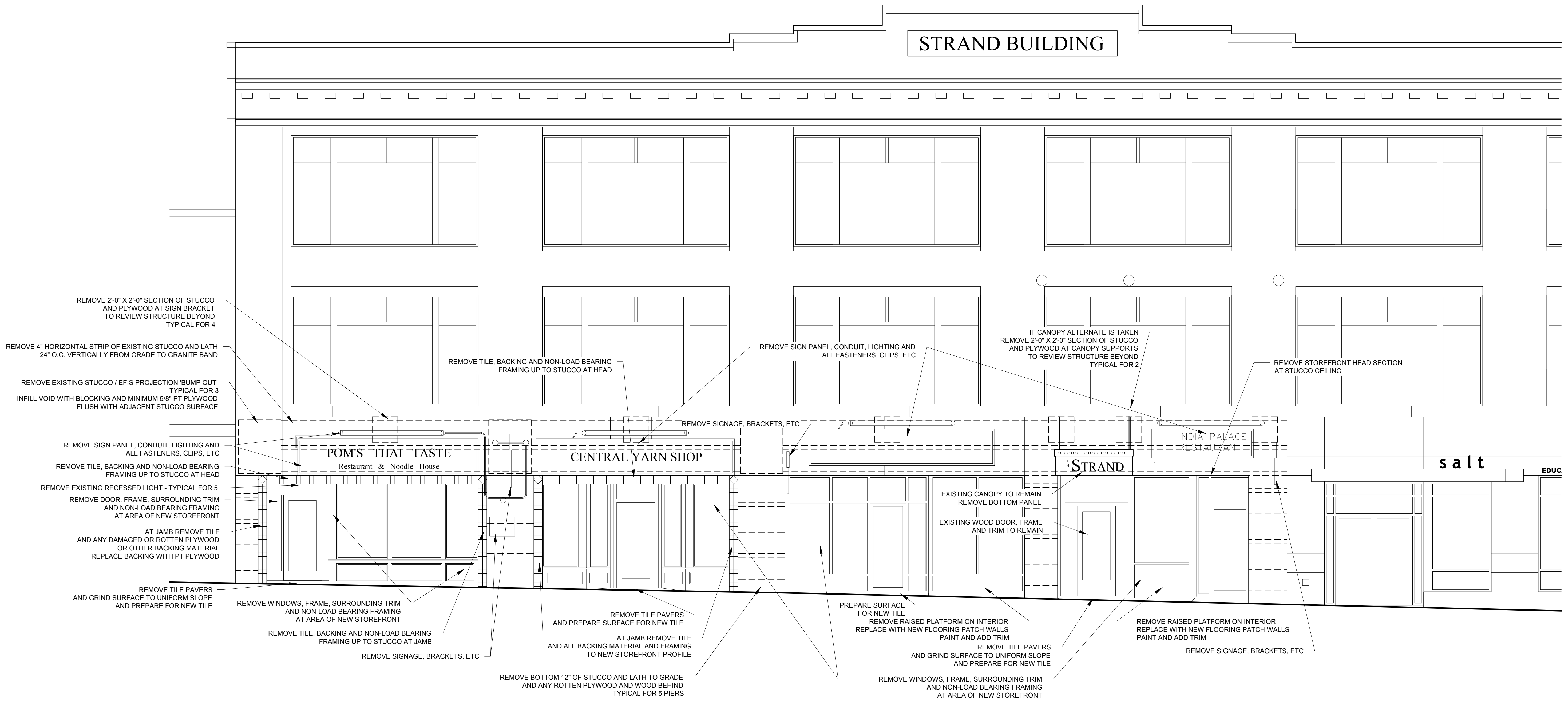
AD1-0

DEMOLITION NOTES:

1.) MODIFICATIONS OF JAMBS AND HEADERS AT EXISTING STOREFRONTS ARE ASSUMED TO BE NON-STRUCTURAL. IF G.C. FINDS OTHERWISE THAT ELEMENTS PROPOSED TO BE REMOVED ARE LOAD BEARING STRUCTURAL ELEMENTS G.C. MUST NOTIFY ARCHITECT IN WRITING PRIOR TO REMOVAL.

2.) MODIFY OR RE-ROUTE EXISTING ELECTRICAL (WIRING, RECEPTACLES, SWITCHES, ETC) AS REQUIRED FOR ALL AREAS OF WORK, INCLUDING (LOWERED STOREFRONT SILLS, RAISED STOREFRONT HEADS, WIDENED STOREFRONT JAMBS.

STRAND BUILDING



1 CONGRESS STREET - DEMOLITION ELEVATION
1/4" = 1'-0"