

© 2013 RYAN SENATORE ARCHITECTURE

STRAND BUILDING - FACADE RENOVATION  
565 CONGRESS STREET  
PORTLAND, MAINE

**RSA**  
RYAN SENATORE ARCHITECTURE  
67 GRAY ROAD  
GORHAM, MAINE 04038  
207-650-6414  
senatorearchitecture.com

CONSULTANTS:

REVISIONS:

DATE: JUNE 27, 2013

PROJECT No.

DRAWN BY:

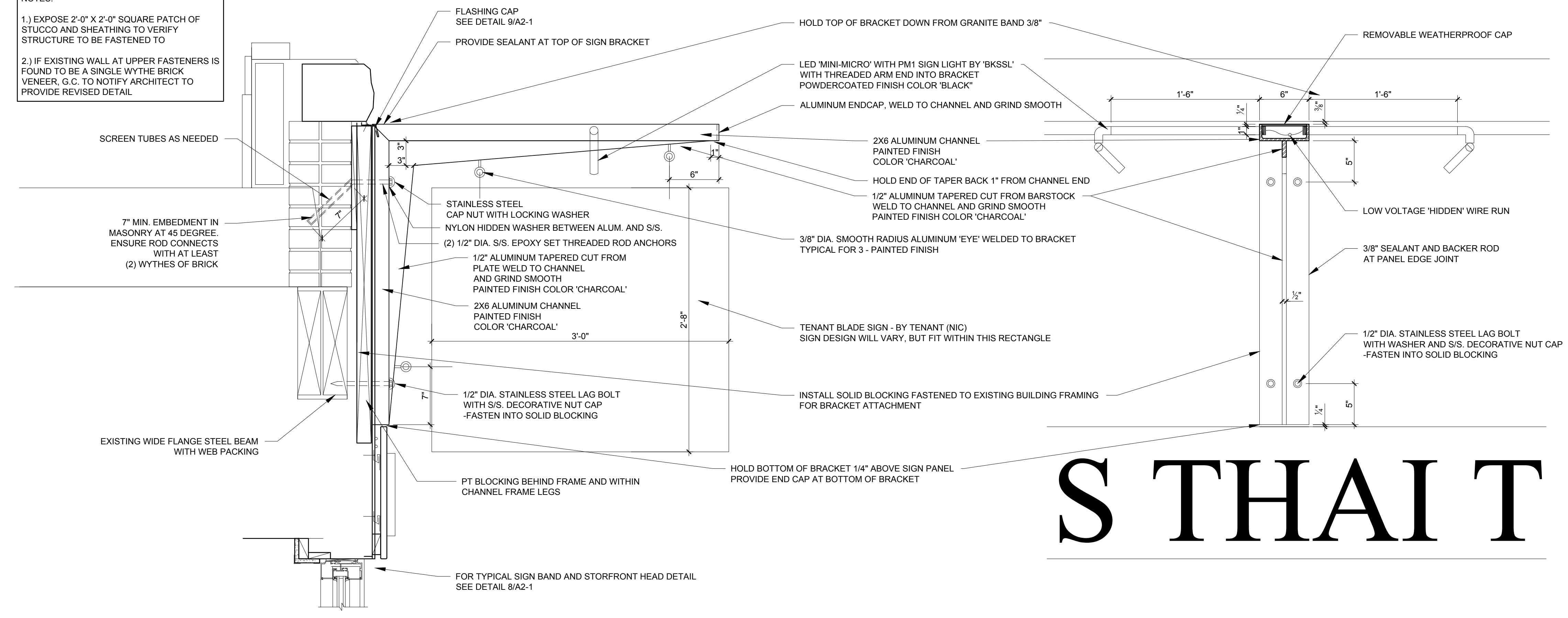
CHECKED BY: RJS

SCALE: AS NOTED

SHEET TITLE:  
BLADE SIGN  
DETAILS

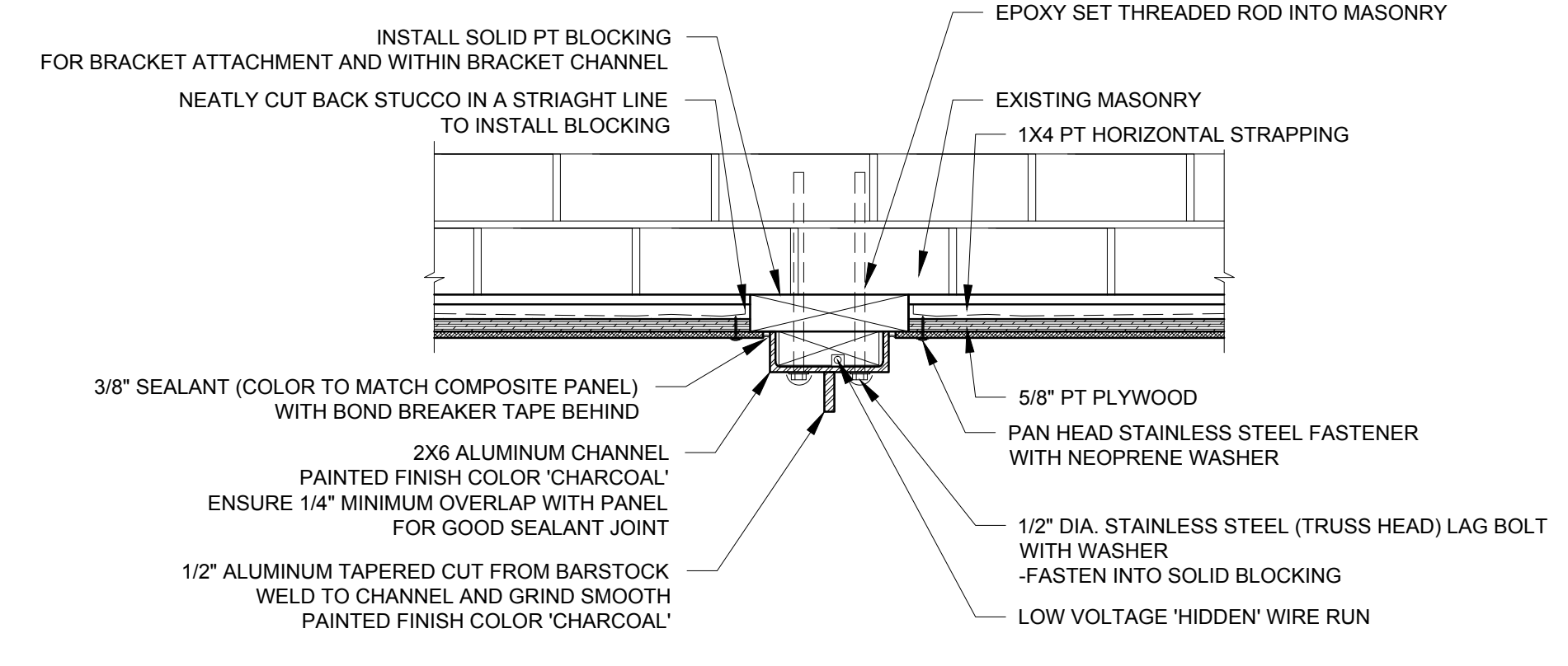
A3-0

**NOTES:**  
1.) EXPOSE 2'-0" X 2'-0" SQUARE PATCH OF STUCCO AND SHEATHING TO VERIFY STRUCTURE TO BE FASTENED TO  
2.) IF EXISTING WALL AT UPPER FASTENERS IS FOUND TO BE A SINGLE WYTHE BRICK VENEER, G.C. TO NOTIFY ARCHITECT TO PROVIDE REVISED DETAIL

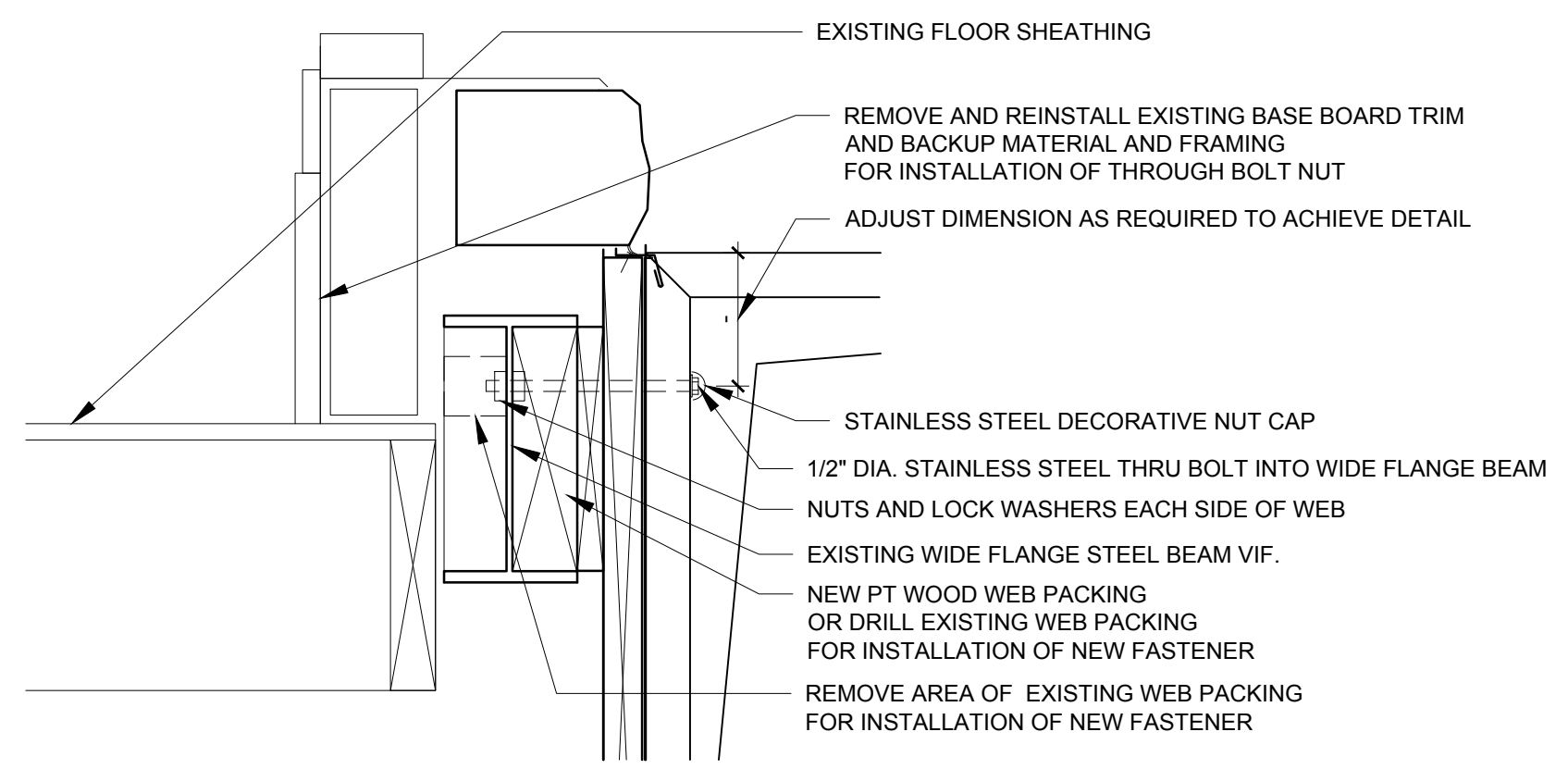


3 SECTION DETAIL  
1-1/2" = 1'-0"

2 ELEVATION DETAIL  
1-1/2" = 1'-0"



1 PLAN DETAIL  
1-1/2" = 1'-0"



4 ALTERNATE - SECTION DETAIL AT SIGN BRACKET FASTENED TO STEEL BEAM  
1-1/2" = 1'-0"