

© 2013 RYAN SENATORE ARCHITECTURE

STRAND BUILDING - FACADE RENOVATION
565 CONGRESS STREET
PORTLAND, MAINE



RYAN SENATORE ARCHITECTURE
67 GRAY ROAD
GORHAM, MAINE 04038
207-650-6414
senatorearchitecture.com

CONSULTANTS:

REVISIONS:

DATE: JUNE 27, 2013

PROJECT No.

DRAWN BY:

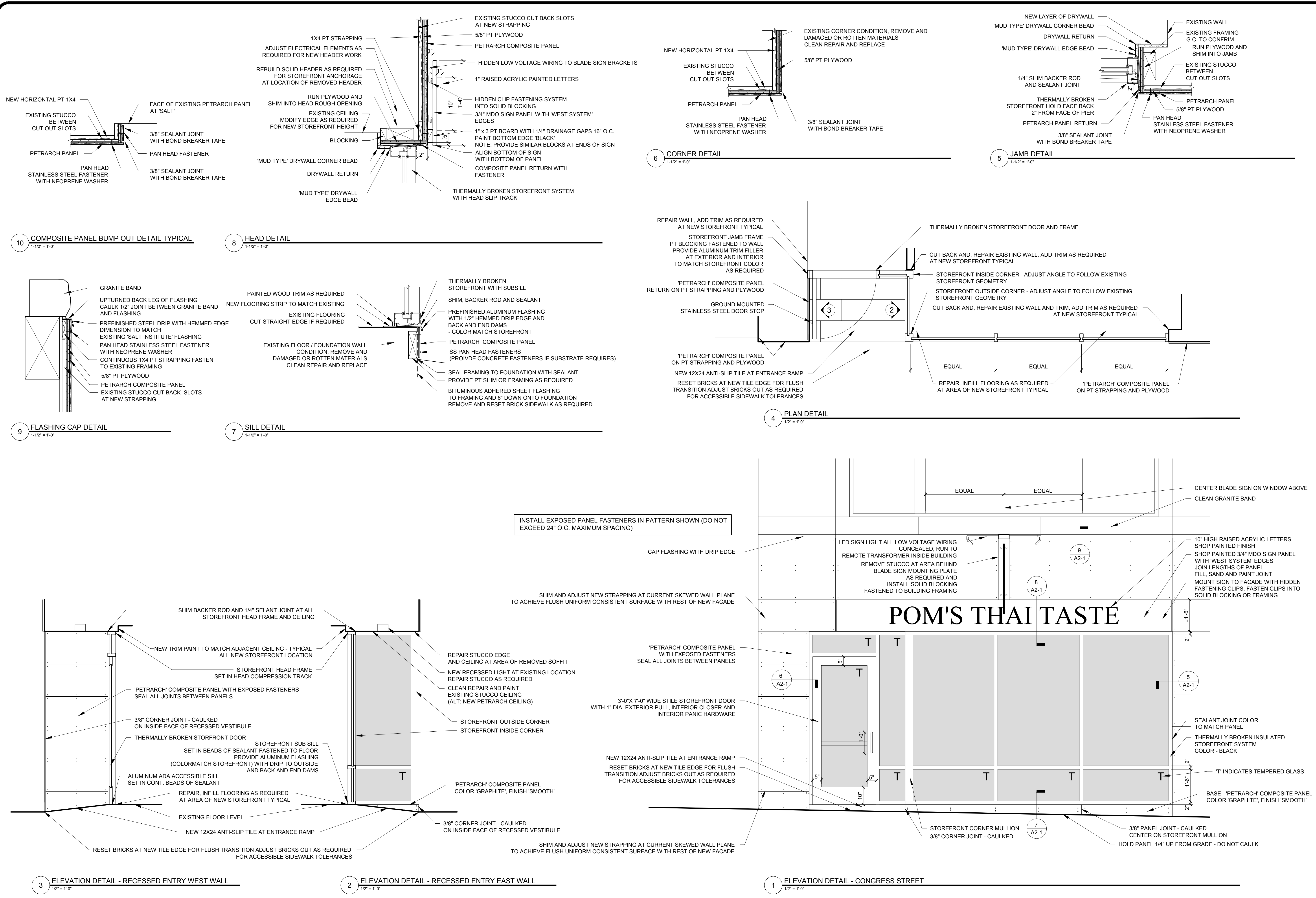
CHECKED BY: RJS

SCALE: AS NOTED

SHEET TITLE:

STOREFRONT - 1
DETAILS

A2-1



10 COMPOSITE PANEL BUMP OUT DETAIL TYPICAL
1-1/2" = 1'-0"

8 HEAD DETAIL
1-1/2" = 1'-0"

9 FLASHING CAP DETAIL
1-1/2" = 1'-0"

7 SILL DETAIL
1-1/2" = 1'-0"

6 CORNER DETAIL
1-1/2" = 1'-0"

5 JAMB DETAIL
1-1/2" = 1'-0"

4 PLAN DETAIL
1/2" = 1'-0"

3 ELEVATION DETAIL - RECESSED ENTRY WEST WALL
1/2" = 1'-0"

2 ELEVATION DETAIL - RECESSED ENTRY EAST WALL
1/2" = 1'-0"

1 ELEVATION DETAIL - CONGRESS STREET
1/2" = 1'-0"