

© 2013 RYAN SENATORE ARCHITECTURE

STRAND BUILDING - FACADE RENOVATION
 565 CONGRESS STREET
 PORTLAND, MAINE



CONSULTANTS:

REVISIONS:

DATE: JUNE 27, 2013

PROJECT No.

DRAWN BY:

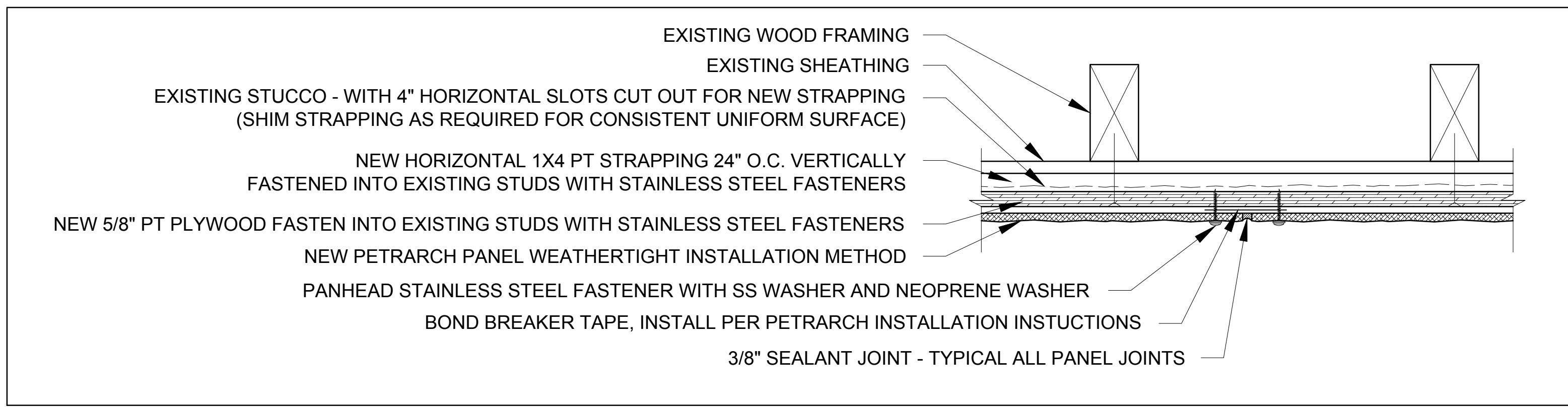
CHECKED BY: RJS

SCALE: AS NOTED

SHEET TITLE:

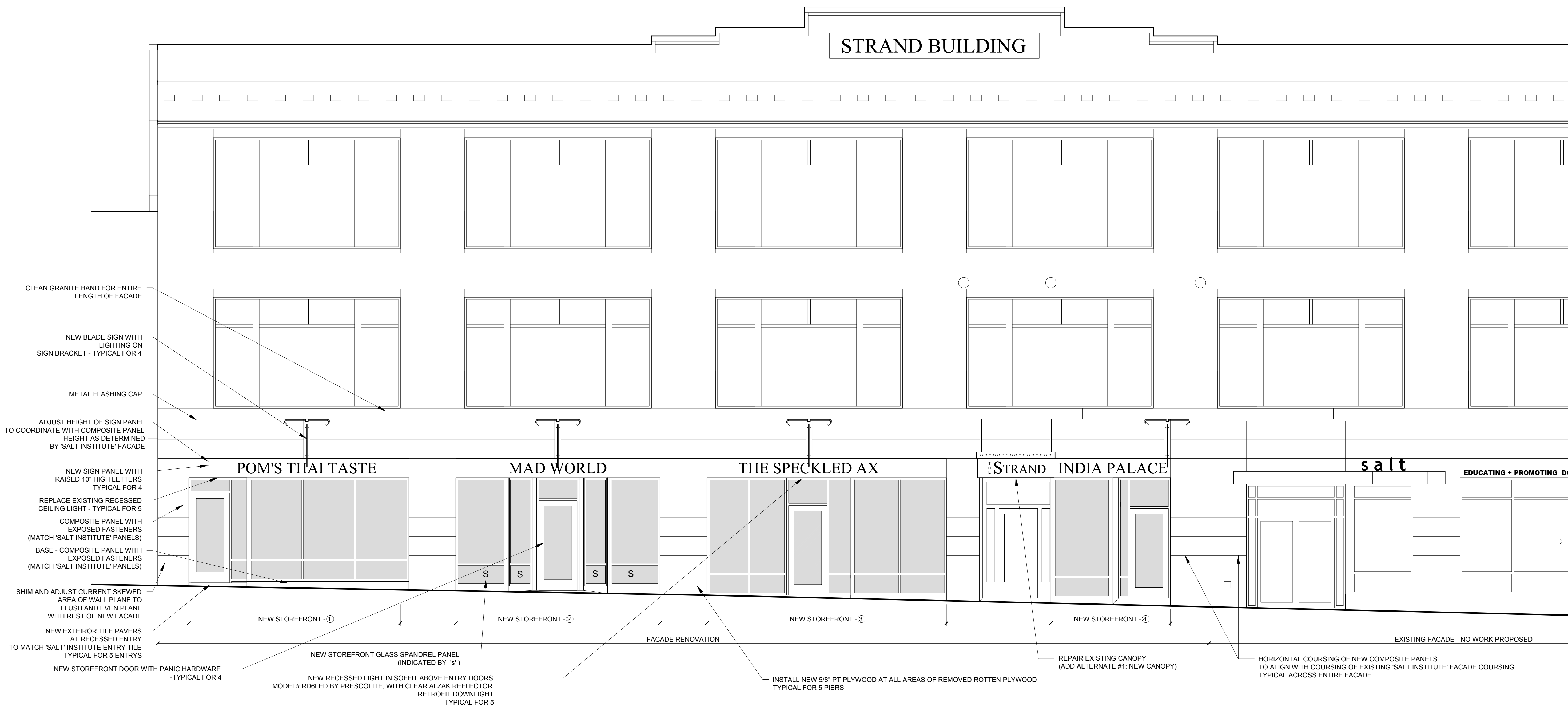
ELEVATION

A2-0



2 TYPICAL PETRARCH DETAIL AT EXISTING STUCCO
 3/8" = 1'-0"

STRAND BUILDING



1 CONGRESS STREET ELEVATION
 1/4" = 1'-0"