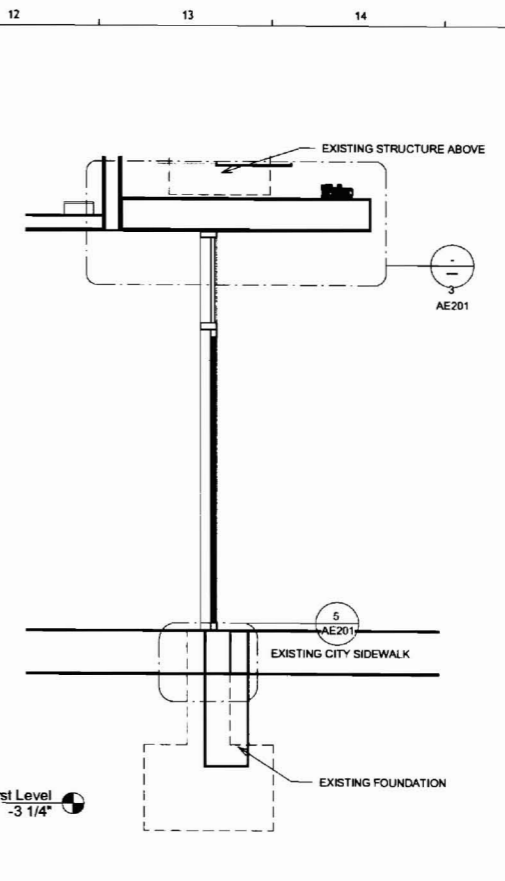
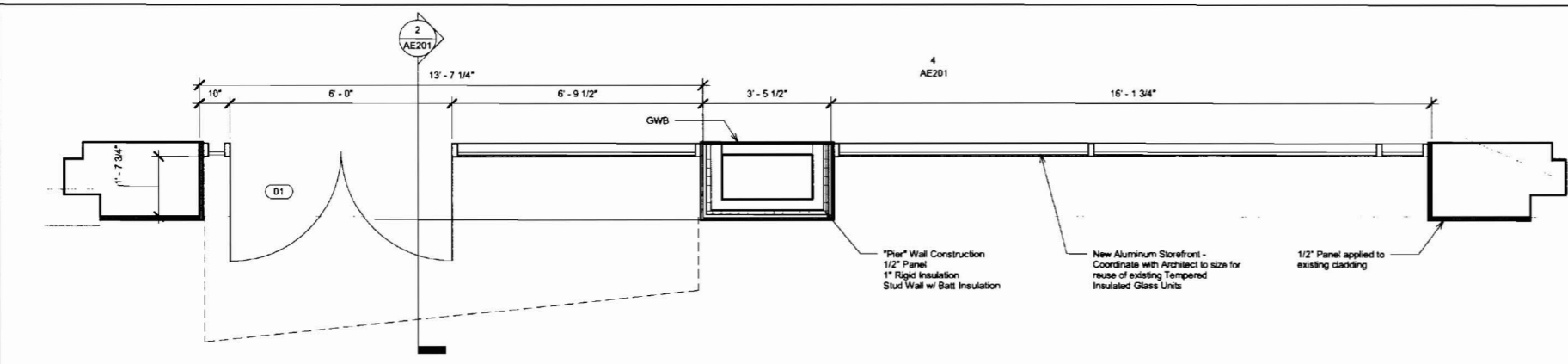


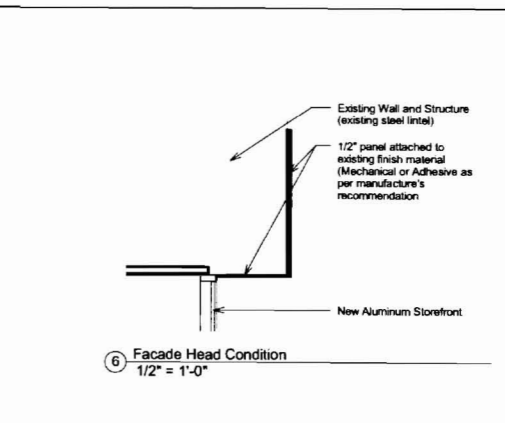
1 CONGRESS STREET ELEVATION
1/2" = 1'-0"



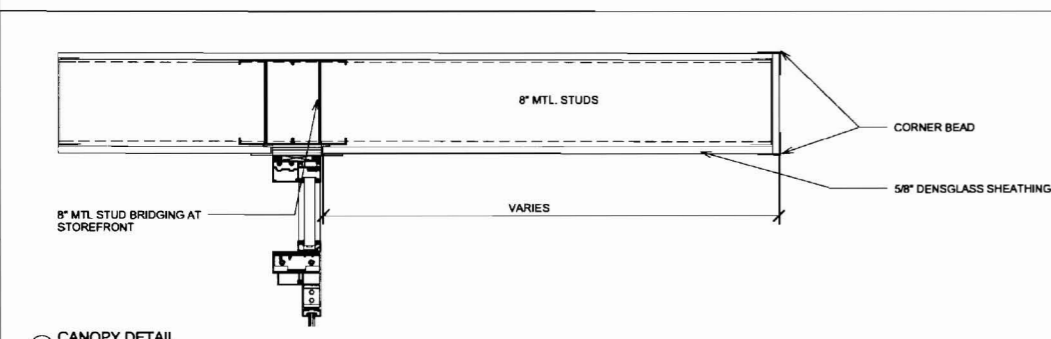
2 STOREFRONT SECTION
1/2" = 1'-0"



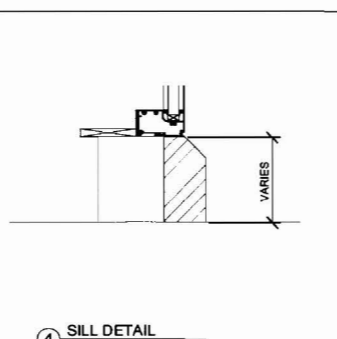
3 ENLARGED STOREFRONT PLAN
1/2" = 1'-0"



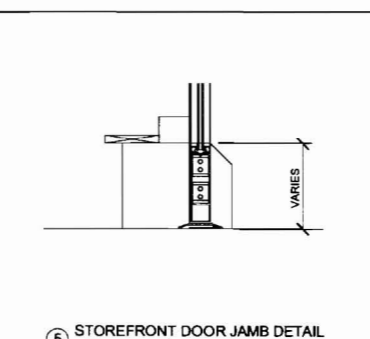
6 Facade Head Condition
1/2" = 1'-0"



3 CANOPY DETAIL
1 1/2" = 1'-0"



4 SILL DETAIL
1 1/2" = 1'-0"



5 STOREFRONT DOOR JAMB DETAIL
1 1/2" = 1'-0"

144 Pine Street • P.O. Box 618
Portland, Maine 04104
Tel: 207.772.3846
Fax: 207.772.1070
www.smrinc.com

ARCHITECTURE
ENGINEERING
PLANNING
INTERIOR DESIGN
COMMISSIONING



561 Congress Street, Portland, ME
The SALT Institute for Documentary Studies
Enter address here

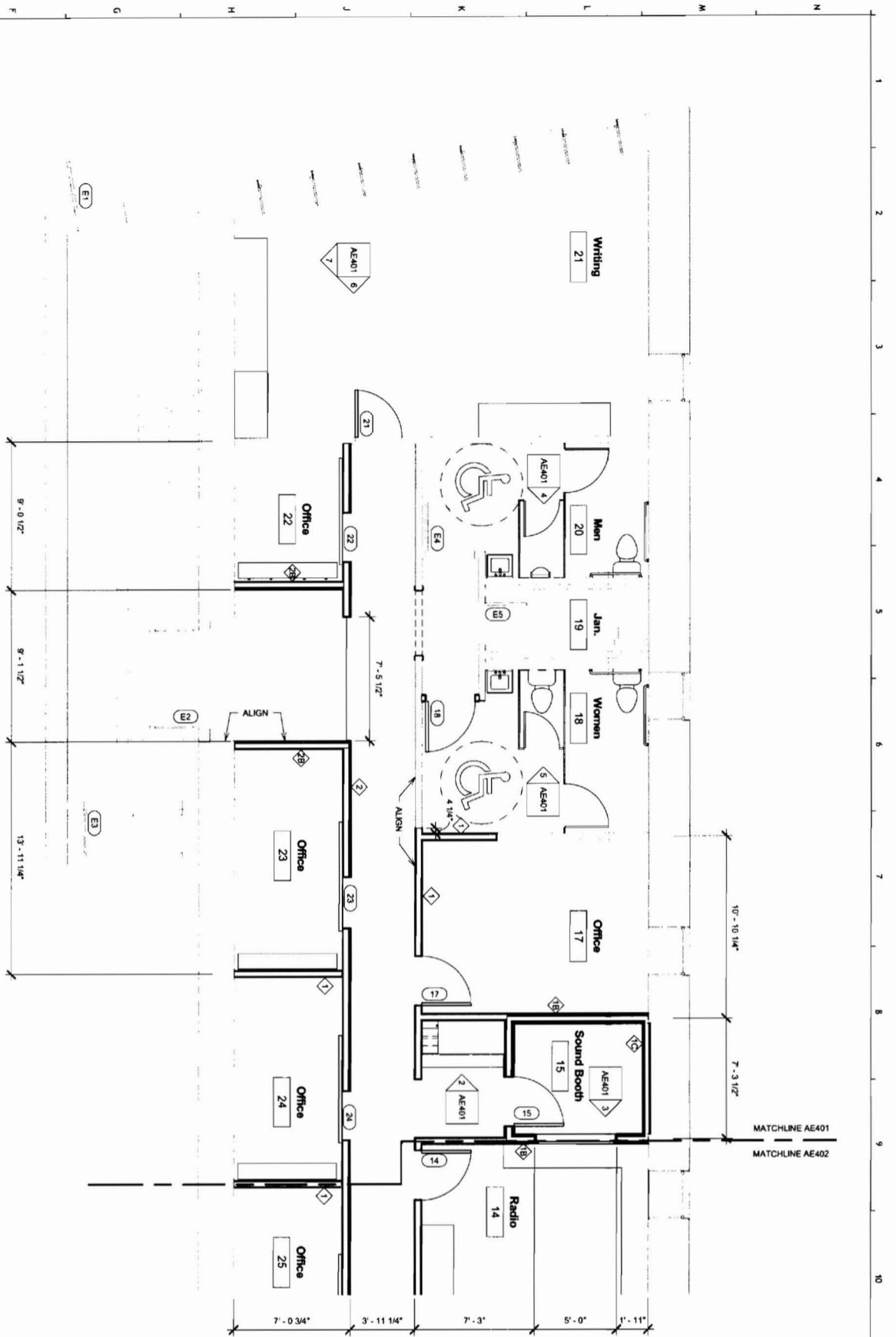
Permit Set

NO.	DATE	DESCRIPTION

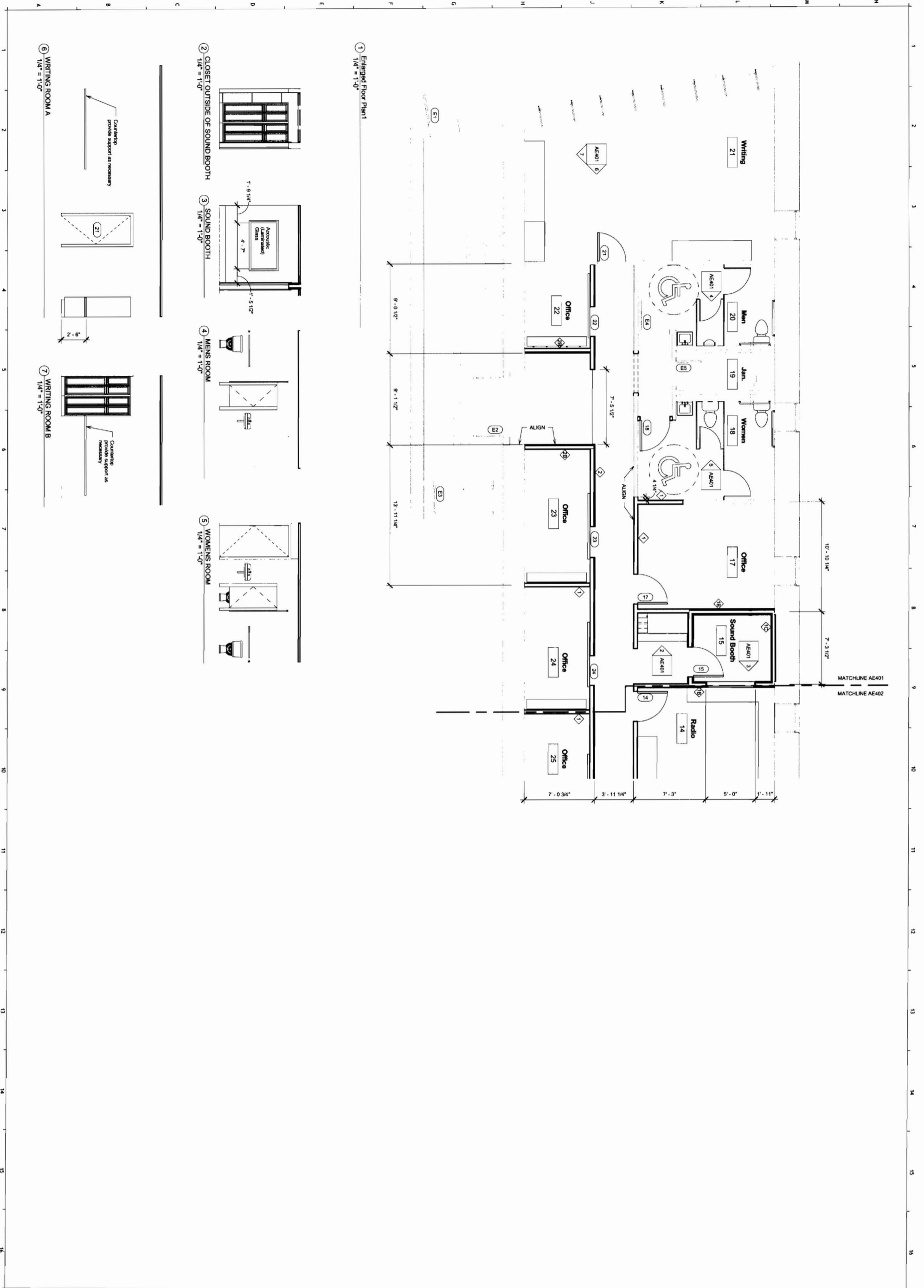
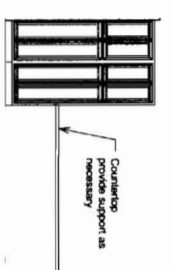
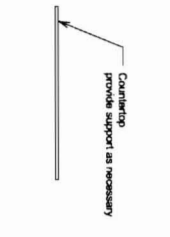
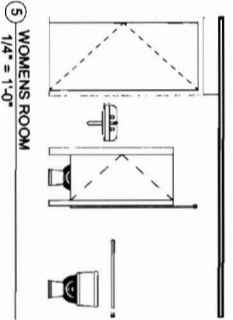
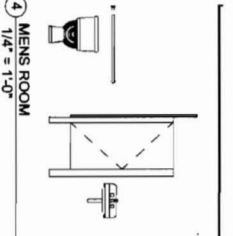
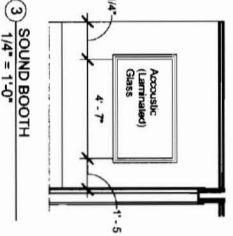
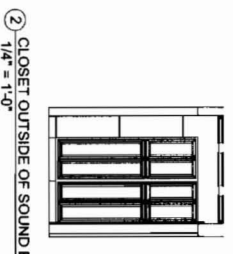
As indicated
FRL
FRL
4/11/2008 10:44:28 AM
As indicated

ELEVATIONS & SECTIONS

AE201

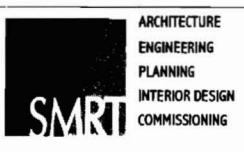


1 Enlarged Floor Plan 1
1/4" = 1'-0"



561 Congress Street, Portland, ME
The SALT Institute for Documentary Studies
Enter address here

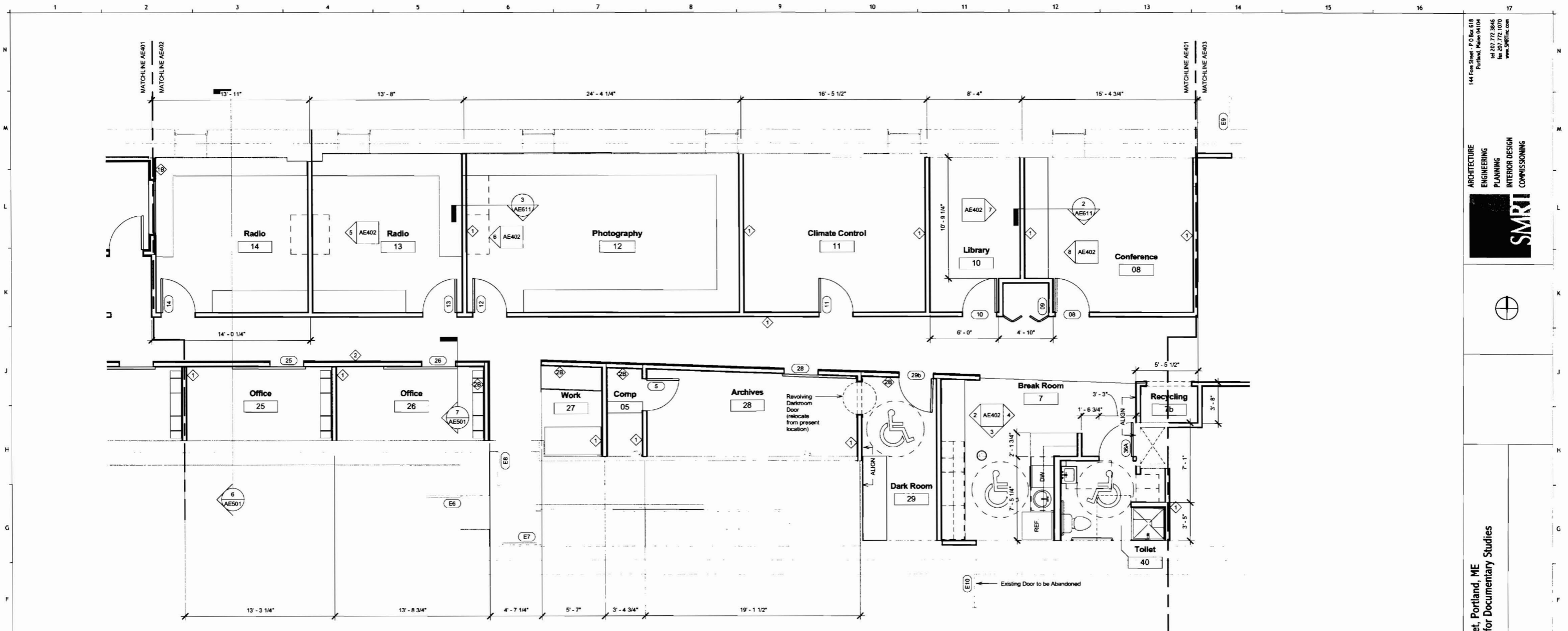
Permit Set



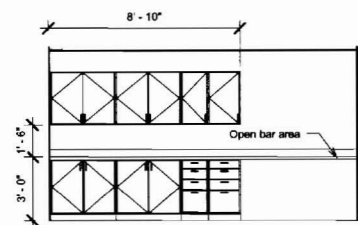
144 Fore Street - P O Box 618
Portland, Maine 04104
Tel 202.772.3846
Fax 202.772.1070
www.SMRTinc.com

DATE	1/4" = 1'-0"
BY	SMRT
CHECKED	SMRT
DATE	4/11/2008 10:41:30 AM
PROJECT	561 Congress Street
SCALE	1/4" = 1'-0"

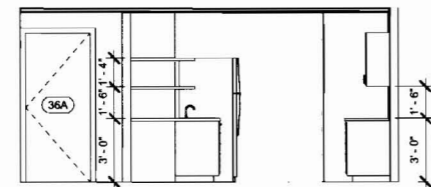
ENLARGED PLANS B
DETAILS
AE401



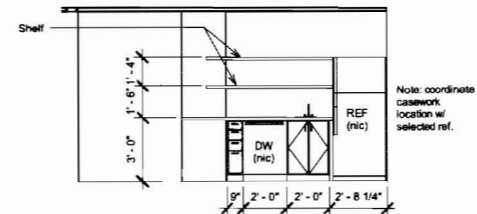
① Enlarged Floor Plan 2
1/4" = 1'-0"



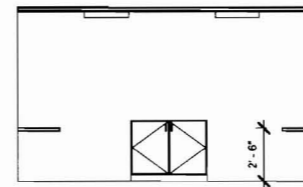
② Kitchenette - Bar
1/4" = 1'-0"



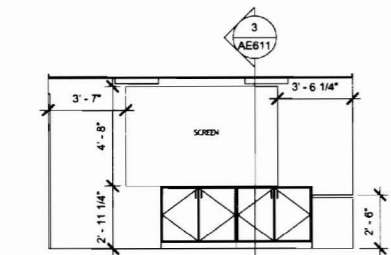
③ Kitchenette - End Elevation
1/4" = 1'-0"



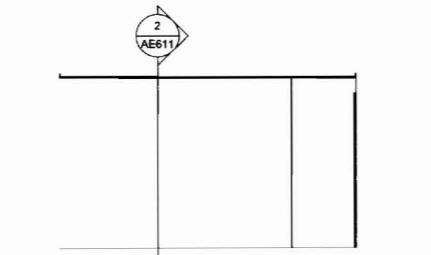
④ Kitchenette - Sink-Ref-DW
1/4" = 1'-0"



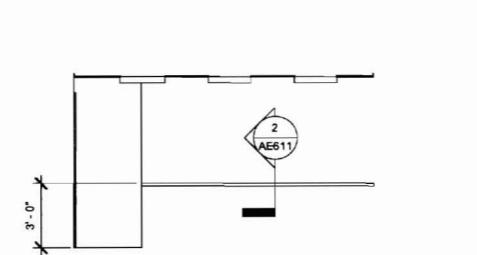
⑤ RADIO ROOM #13
1/4" = 1'-0"



⑥ PHOTOGRAPHY ROOM
1/4" = 1'-0"



⑦ LIBRARY
1/4" = 1'-0"



⑧ CONFERENCE
1/4" = 1'-0"

144 Fore Street • P.O. Box 618
Portland, Maine 04104
Tel: 207.772.8446
Fax: 207.772.0700
www.smrtd.com

ARCHITECTURE
ENGINEERING
PLANNING
INTERIOR DESIGN
COMMISSIONING

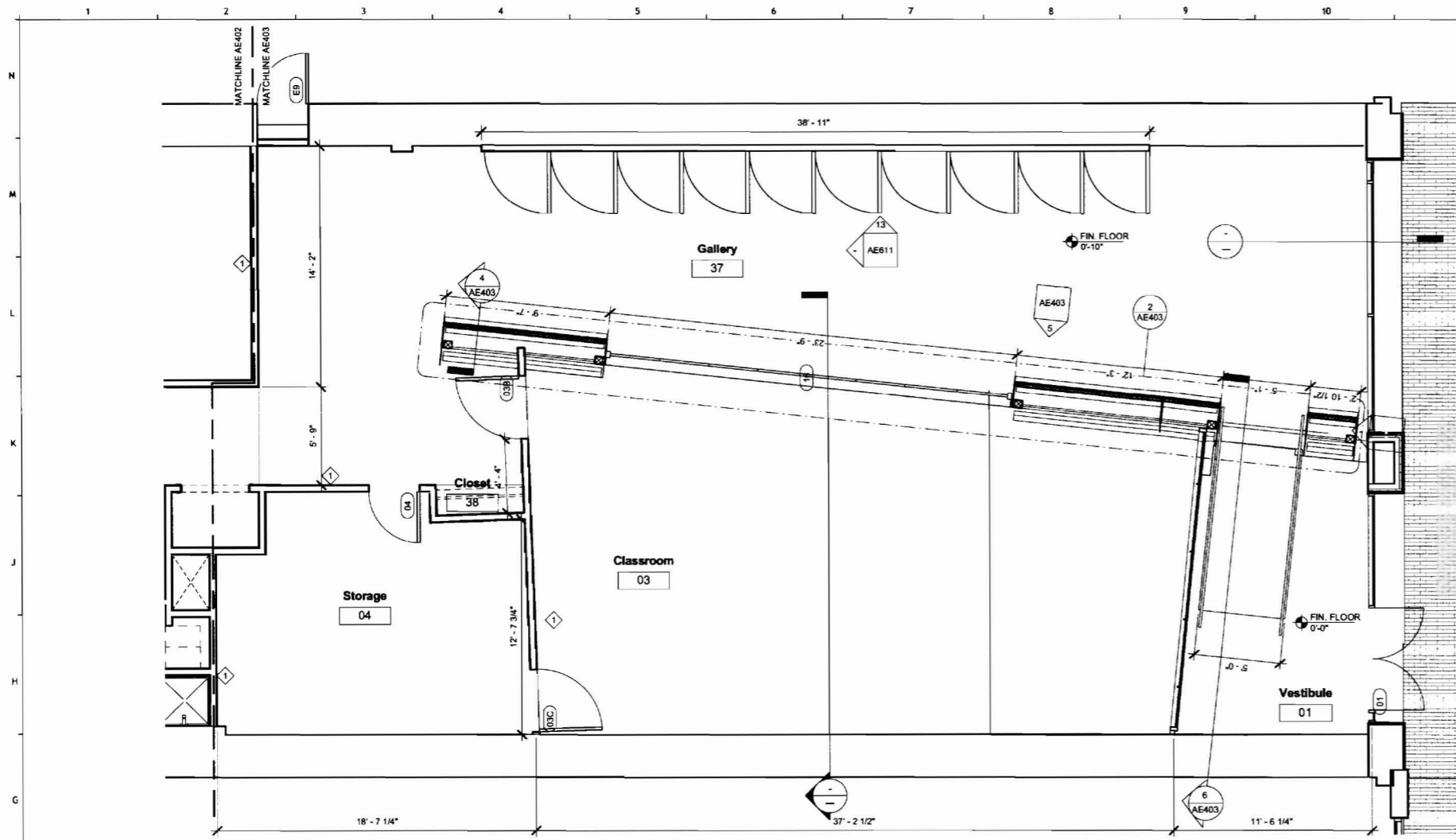
561 Congress Street, Portland, ME
The SALT Institute for Documentary Studies
Enter address here

Permit Set

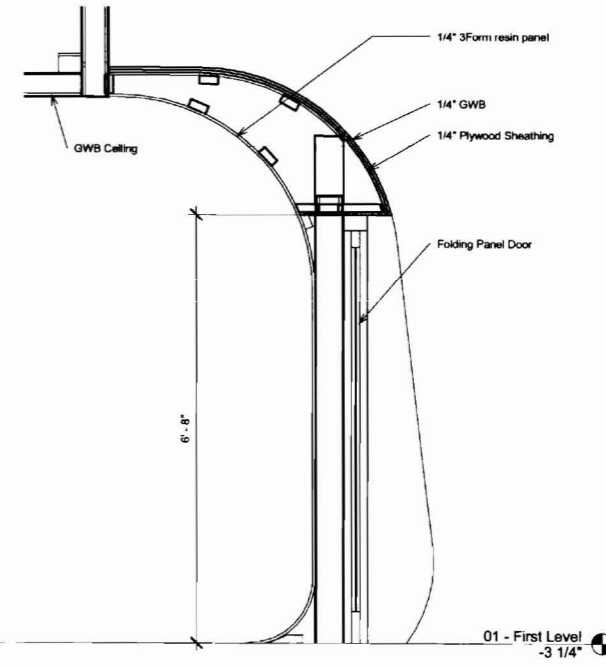
Scale:	1/4" = 1'-0"
Author:	PLN
Check:	PLN
Date:	4/11/2008 10:44:31 AM
Project:	SMRT
Sheet:	1/4" = 1'-0"

ENLARGED PLANS &
DETAILS

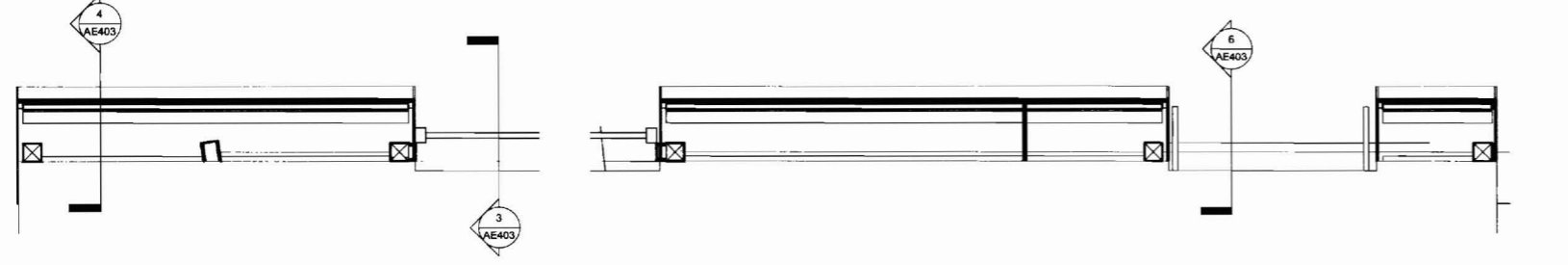
AE402



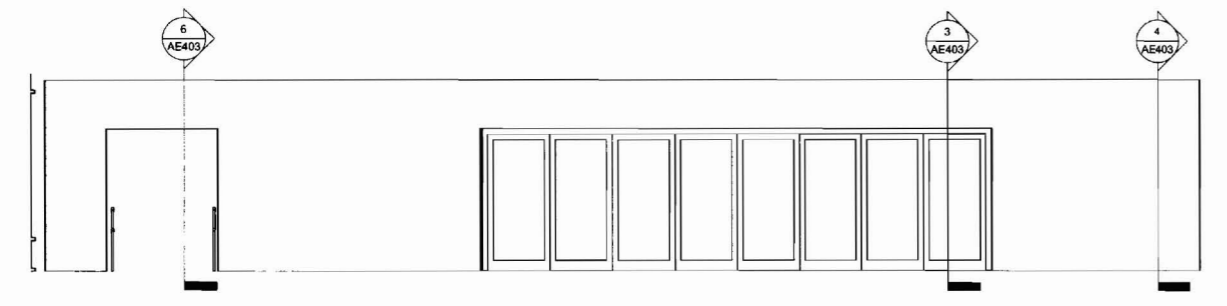
① LOBBY/GALLERY
1/4" = 1'-0"



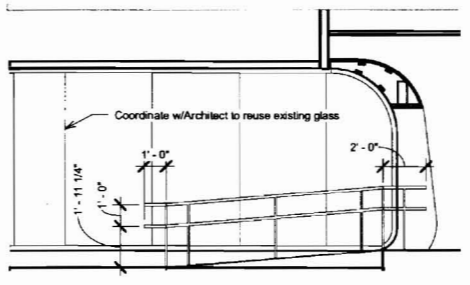
③ ANDRE Door Section
3/4" = 1'-0"



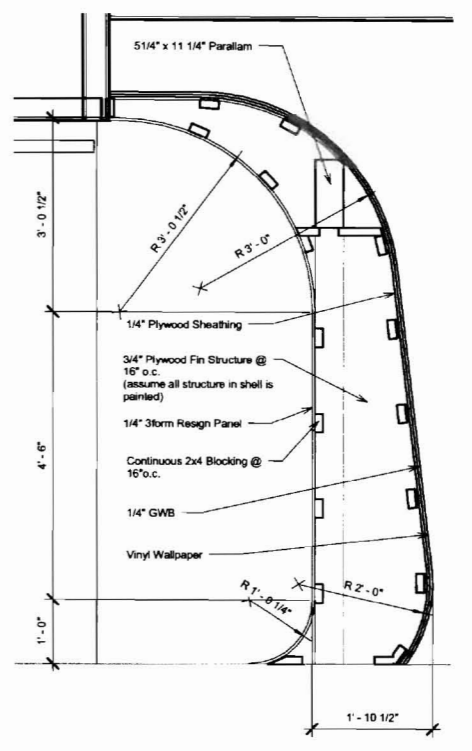
② 01.2 Andre Framing Plan
1/2" = 1'-0"



⑤ ANDRE WALL ELEVATION
1/4" = 1'-0"



⑥ ANDRE Window Section/Elevation
1/4" = 1'-0"



④ ANDRE Wall Section (Solid)
3/4" = 1'-0"

144 Fore Street - P.O. Box 618
Portland, Maine 04106
Tel: 207.772.3846
Fax: 207.772.0770
www.SMRFI.com

ARCHITECTURE
ENGINEERING
PLANNING
INTERIOR DESIGN
COMMISSIONING
SMRFI

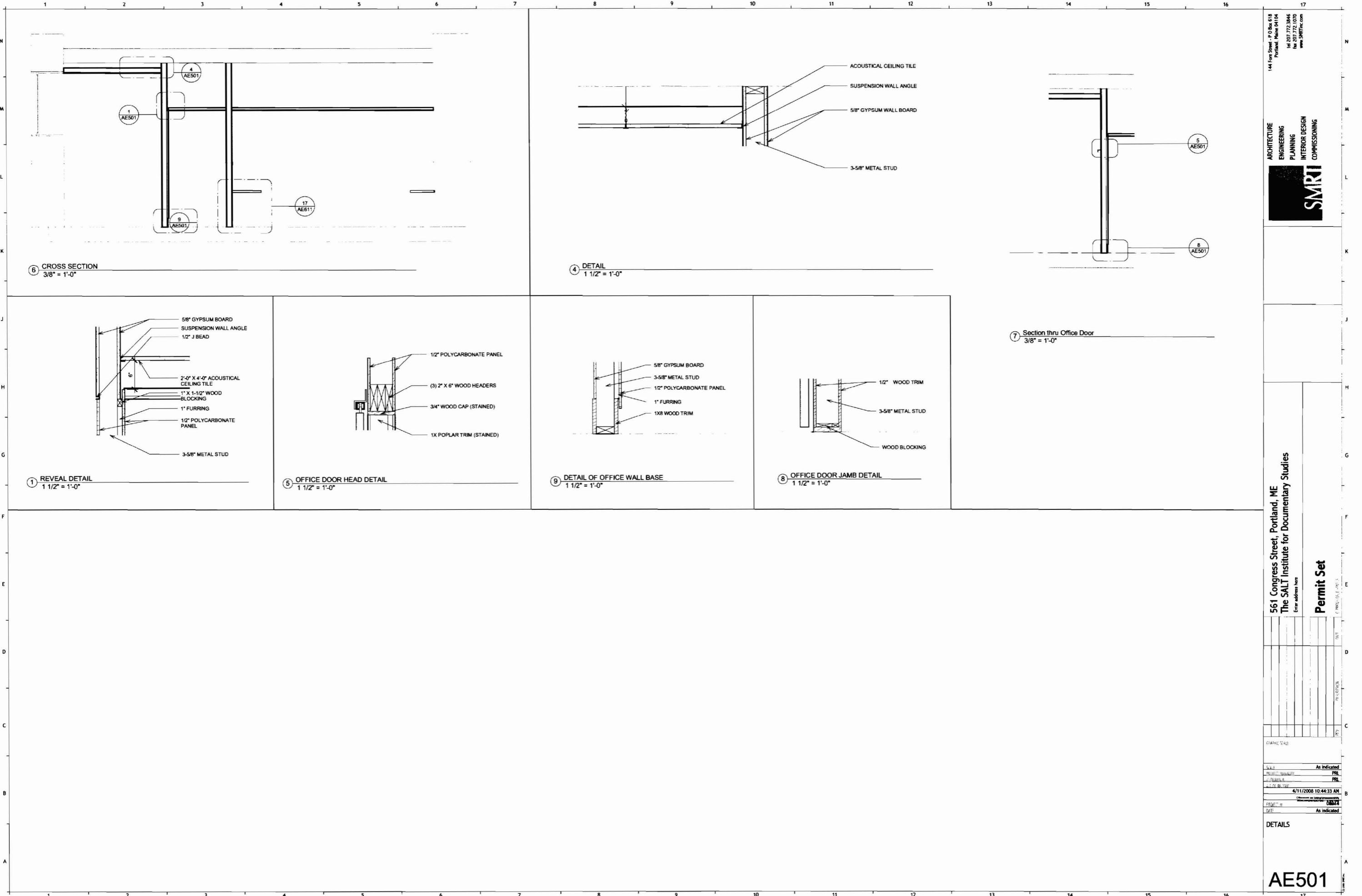
561 Congress Street, Portland, ME
The SALT Institute for Documentary Studies

Permit Set
Enter address here

DATE	As indicated
REVISION	As indicated
APPROVAL	As indicated
AUTHOR	As indicated
DATE	4/11/2008 10:44:32 AM
SCALE	AS SHOWN
TITLE	As indicated

CLASSROOM (ANDRE)
PLAN & DETAILS

AE403



⑥ CROSS SECTION
3/8" = 1'-0"

④ DETAIL
1 1/2" = 1'-0"

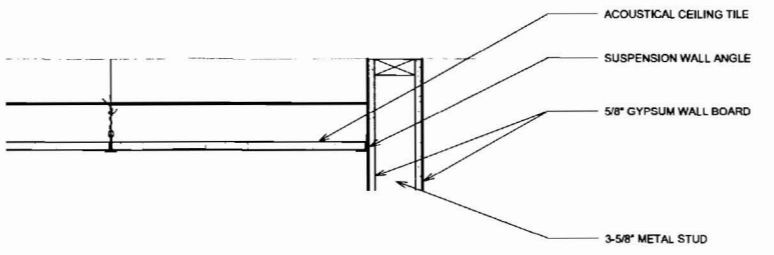
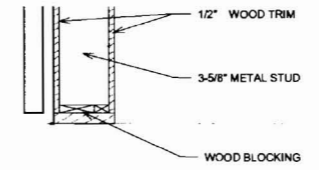
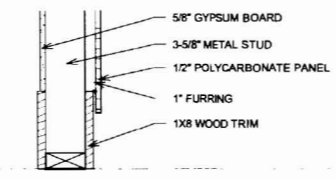
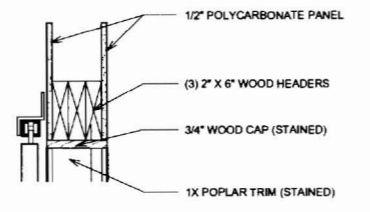
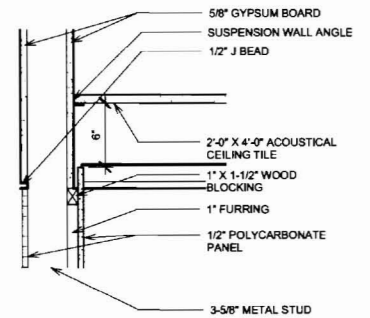
⑦ Section thru Office Door
3/8" = 1'-0"

① REVEAL DETAIL
1 1/2" = 1'-0"

⑤ OFFICE DOOR HEAD DETAIL
1 1/2" = 1'-0"

⑨ DETAIL OF OFFICE WALL BASE
1 1/2" = 1'-0"

⑧ OFFICE DOOR JAMB DETAIL
1 1/2" = 1'-0"



Finish Schedule - NEW															
Number	Name	Area	Ceiling	Ceiling Finish	Floor Finish	Base Finish	North Wall	North Finish	East Wall	East Finish	South Wall	South Finish	West Wall	West Finish	Comments
01	Vestibule	191 SF		GWB	PFT-1	PTB-1		PTD		PTD		PTD		PTD	
03	Classroom	772 SF		ACT-1	CPT	RB-1		SSP-1		PTD		PTD		PTD/AWP	AWP-1 AT WEST WASS. SEE FLOOR FINISH SHEET FOR CPT PARTITION
04	Storage	239 SF		ACT-1	RUB-1	RB-1		PTD		PTD		PTD		PTD	
05	Comp	23 SF		ACT-1	RUB-1	RB-1		PTD		PTD		PTD		PTD	
7	Break Room	189 SF		ACT-1	RUB-1	RB-1		PTD		PTD		PTD		PTD	
7b	Recycling	16 SF													
08	Conference	196 SF		ACT-1	CPT-1	PTB-1		PTD		PTD		PTD		PTD	PROVIDE WALL TALKERS EZ-RITE @
09	Closet	10 SF		ACT-1	CPT-1	RB-1		PTD		PTD		PTD		PTD	
10	Library	103 SF		ACT-1	CPT-1	RB-1		PTD		PTD		PTD		PTD	
11	Climate Control	225 SF		ACT-1	RUB-1	RB-1		PTD		PTD		PTD		PTD	
12	Photography	338 SF		ACT-1	RUB-1	RB-1		PTD		PTD		PTD		PTD/VWC	PROVIDE VWC-2 @ WEST WALL
13	Radio	186 SF		ACT-1	RUB-1	RB-1		PTD		PTD		PTD		PTD/WWC	PROVIDE VWC-2 @ WEST WALL
14	Radio	184 SF		ACT-1	RUB-1	RB-1		PTD		PTD/VWC		PTD		PTD	PROVIDE VWC-2 @EAST WALL
15	Sound Booth	52 SF		ACT-1	CPT-1	PTB-1		PTD		PTD		PTD		PTD	PROVIDE AWP-2
16	Closet	14 SF		ACT-2	CPT-1	RB-1		PTD		PTD		PTD		PTD	
17	Office	142 SF		ACT-1	CPT-1	RB-1		PTD/VWC		PTD		PTD		PTD	PROVIDE VWC-2 @ NORTH WALL
18	Women	129 SF		GWB	PFT	PTB-1		PTD/CT		PTD/CT		PTD		PTD/CT	CT-1 UP TO 40" AFF. PTD ABOVE
19	Jan.	33 SF		GWB	SEALED CONCRETE										
20	Men	106 SF		GWB	PFT-1	PTB-1		PTD/CT		PTD/CT		PTD		PTD/CT	CT-1 UP TO 40" AFF. PTD ABOVE
21	Writing	380 SF		ACT-1	RUB-1	RB-1		PTD/VWC-2		PTD		PTD		PTD	
22	Office	55 SF		ACT-1	CPT-1	RB-1		PTD		PTD		PTD		PTD	
23	Office	87 SF		ACT-1	CPT-1	RB-1		PTD		PTD		PTD		PTD	
24	Office	81 SF		ACT-1	CPT-1	RB-1		PTD		PTD		PTD		PTD	
25	Office	85 SF		ACT-1	CPT-1	RB-1		PTD		PTD		PTD		PTD	
26	Office	86 SF		ACT-1	CPT-1	RB-1		PTD		PTD		PTD		PTD	
27	Work	43 SF		ACT-2	RUB-1	RB-1		PTD		PTD		PTD		PTD	
28	Archives	139 SF		ACT-1	RUB-1	RB-1		PTD		PTD		PTD		PTD	
29	Dark Room	94 SF		GWB	RUB-1	RB-1		PTD		PTD		PTD		PTD	
32	Comidor	74 SF		ACT-2	CPT-1	RB-1/W/D		PTD		PTD		PTD		PTD	SEE ELEVATIONS & SECTIONS FOR PTD & BASE DETAILS
33	Existing Stairs	272 SF													
34	Existing Stairs	244 SF													
37	Gallery	1028 SF		GWB	BAMB-1	RB-1		PTD		PTD		VWC-1		PTD	PROVIDE 3 PTD COLORS AT NORTH WALL
38	Closet	9 SF		ACT-1	CPT-1	RB-1		PTD		PTD		PTD		PTD	
39	Comidor	647 SF		ACT-2	CPT-1	RB-1/W/D		PTD		PTD		PTD		PTD	SEE ELEVATIONS & SECTIONS FOR PTD & BASE DETAILS
40	Toilet	62 SF		GWB	PFT-1	PTB-1		PTD/CT		PTD/CT		PTD		PTD/CT	CT-1 UP TO 40" AFF. PTD ABOVE

GENERAL NOTES

1. DOOR AND WINDOW FRAMES TO BE PTD.
2. REFER TO RCP FOR SOFFIT HEIGHTS. ALL SOFFITS TO BE PTD.
3. ALL GYP. CEILINGS TO BE PAINTED PTD, COLOR, T.B.D., UNLESS OTHERWISE NOTED.
4. ASSUME PAINT ACCENT WALL PER ROOM.
5. EXISTING SLAB ON GRADE SURFACES ARE TO BE SHOT BLASTED AND A SURFACE APPLIED SEALER SPREAD TO PREVENT MOISTURE. SEE SPECIFICATIONS FOR FURTHER DETAILS.

FINISH ABBREVIATIONS:

ACT CEM	ACOUSTICAL CEILING TILE
CG	CEMENT BOARD
CONC	CORNER GUARD
CPT	CONCRETE
CT	CARPET
EXP	CERAMIC TILE
FC	EXPOSED STRUCTURE
GL	FLASH COVE
GWB	DECORATIVE GLAZING
HD WD	GYP SUM WALLBOARD
INS	HARD WOOD
INS PNL	INSULATED
LWC	INSULATED PANELS
PC	LINEAR WOOD CEILING
PF	PRE-CAST PANELS
PWC	PRE-FINISHED BY MANUFACTURER
PFT	PROTECTIVE WALL COVERING
PLAM	PORCELAIN FLOOR TILE
PTD	PLASTIC LAMINATE
QT	PAINTED
RB	QUARRY TILE
RCP	RUBBER BASE
RM	REFLECTED CEILING PLAN
SC	RECESSED MAT
SPP	SEALED CONCRETE
SS	SOLID POLYMER PANEL
SV	SOLID SURFACE
SRF	SHEET VINYL
WD	SLIP-RESISTANT FLOORING
WCM	WOOD
WG	WALK-OFF MAT
	WALL GUARD

FINISH LEGEND:

Acoustic Ceiling Tile:
 ACT-1: Armstrong, 2' x 2' Mesa, High CAC with angled tegular edge, 15/16" grid.
 ACT-2: Armstrong, 2' x 4' Ultima, Open Plan, beveled tegular edge, 15/16" grid.
 * All exposed (cut) edges to be painted white to match ACT

Acoustic Wall Panels:
 AWP-1: Fabric wrapped Acoustic Panels
 Panels: Armstrong
 Fabric: Custom
 AWP-2: Fabric wrapped Acoustic Panels
 Panels: Armstrong
 Fabric: Custom

Bamboo Flooring:
 BAMB-1: Teragren, Studio Line

Carpet:
 CPT-1: Mannington Commercial carpet tiles, Tie-Dye
 CPT-2: Mannington Commercial carpet tiles, Terry Cloth
 CPT-3: Mannington Commercial carpet tiles, Color Canvas
 CPT-4: Mannington Commercial carpet tiles, Modern Wear

Ceramic Wall Tile:
 CT-1: Royal Mesa 10Thirty, 4 x 12 inch, Color:

Decorative Glazing:
 GL-1: Pulp Studio, Ref #249249

Paint:
 PTD-1: Sherwin Williams
 PTD-2: Sherwin Williams
 PTD-3: Sherwin Williams
 PTD-4: Sherwin Williams
 PTD-5: Sherwin Williams

Plastic Laminate:
 PLAM-1:
 PLAM-2:

Porcelain Tile:
 PFT-1: Ragno Metropolitan Tile, 12 x 24" Color:

Porcelain Tile Base:
 PTB-1: Ragno Metropolitan Tile, 6" x 24" Color:

Rubber Base:
 RB-1: Johnsonite, 4" Color:

Rubber Flooring:
 RUB-1: Johnsonite Rubber Tiles, Primo Olio Color:

Solid Polymer Panel:
 SPP-1: 3-Form, 1/16" panel, courier + sassy
 front finish: sandstone
 back finish: sandstone
 line space: 30
 COURIER
 60
 SASSY
 SASSY
 VAPOR

Plastic Laminate:
 PLAM-1:
 PLAM-2:

Porcelain Tile:
 PFT-1: Ragno Metropolitan Tile, 12 x 24" Color:

Solid Surface:
 SS-1: 3-Form, 100 Percent, 1" Thick, Color: Snowmelt

Vinyl Wall Covering:
 VWC-1: Wolf Gordon, custom program
 VWC-2: Walktalkers, EZ-Rite, 60" W x

Walk-off Mat:
 WCM-1:

Accessories:
 Floor Transitions:
 Tile base finish cap: Schluter
 CT-1 finish cap: Schluter

144 Form Sheet - P.O. Box 618
 Portland, Maine 04104
 Tel: 207.772.3846
 Fax: 207.772.1070
 www.smrinc.com



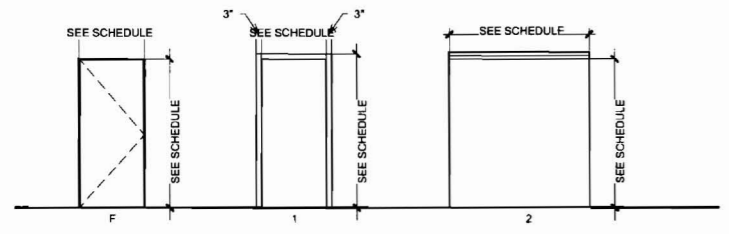
561 Congress Street, Portland, ME
 The SALT Institute for Documentary Studies
 Enter address here

Permit Set

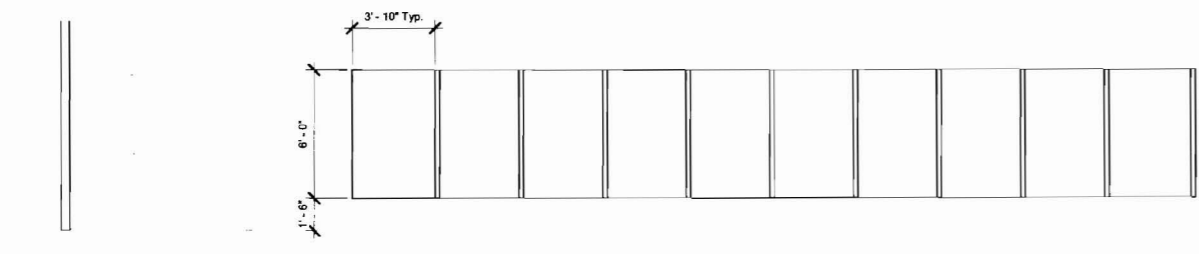
FINISH SCHEDULE & DETAILS
 AE601

Door Schedule - EXISTING											
Mark	Width	Height	Family	Frame Material	Frame Finish	Door Material	Finish	Door Type	Fire Rating	Comments	Hardware Group
E1	3'-0"	7'-0"	Single-Flush								
E2	6'-0"	7'-0"	Double-Glass 1								
E3	6'-0"	7'-0"	Double-Glass 1								
E4	3'-0"	7'-0"	Single-Flush								
E5	2'-6"	7'-0"	Single-Flush								
E6	3'-0"	7'-0"	Single-Flush								
E7	3'-0"	6'-8"	Single-Flush								
E8	3'-0"	6'-8"	Single-Flush								
E9	3'-0"	7'-0"	Single-Flush								
E10	3'-0"	7'-0"	Single-Flush								

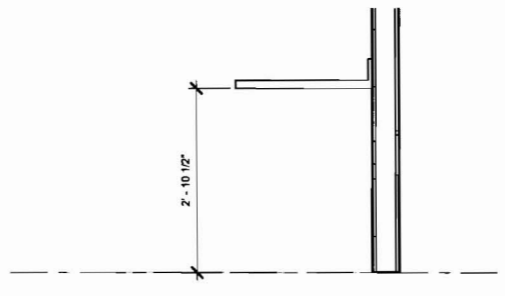
Door Schedule - NEW															
Mark	Construction Type	From Room Number	To Room Number	Width	Height	Family	Frame Material	Frame Finish	Door Material	Finish	Door Type	Frame Type	Fire Rating	Comments	Hardware Group
						panels									
01		01		6'-0"	7'-0 1/2"	Curtain Wall-Store Front-Dbi	AL		GL		FG				
03B		03	37	3'-8"	7'-0"	Single-Flush	HM		WD		F 1				
03C		04	03	3'-8"	7'-0"	Single-Flush	HM		WD		F 1				
04	A	37	04	3'-0"	7'-0"	Single-Flush	HM		WD		F 1				
5		05	28	2'-10"	7'-0"	Single-Flush					1				
08	A	39	08	3'-0"	7'-0"	Single-Flush					1				
09		09	39	4'-0"	7'-0"	Bifold-4 door no trim	HM		WD		F 1				
10	A	39	10	3'-0"	7'-0"	Single-Flush					1				
11	A	39	11	3'-0"	7'-0"	Single-Flush	HM		WD		F 1				
12	A	12	39	3'-0"	7'-0"	Single-Flush	HM		WD		F 1				
13	A	39	13	3'-0"	7'-0"	Single-Flush	HM		WD		F 1				
14	A	39	14	3'-0"	7'-0"	Single-Flush	HM		WD		F 1				
15	A	39	15	3'-0"	7'-0"	Single-Flush	HM		WD		F 1				
16		03	37	23'-8"	6'-8"	Door - Folding Partition	HM		WD		F				
17	A	39	17	3'-0"	7'-0"	Single-Flush									
18	A		18	3'-0"	7'-0"	Single-Flush	HM		WD		F				
21		21	39	2'-10"	7'-0"	Single-Flush	HM		WD		F 1				
22		39	22	3'-0"	7'-0"	Sliding Door - Single with exposed track	WD		WD		F 2				
23		39	23	3'-0"	7'-0"	Sliding Door - Single with exposed track	WD		WD		F 2				
24		39	24	3'-0"	7'-0"	Sliding Door - Single with exposed track	WD		WD		F 2				
25		39	25	3'-0"	7'-0"	Sliding Door - Single with exposed track	WD		WD		F 2				
26		39	26	3'-0"	7'-0"	Sliding Door - Single with exposed track	WD		WD		F 2				
28		39	28	3'-0"	7'-0"	Sliding Door - Single with exposed track	WD		WD		F 2				
29b	A	39	29	3'-0"	7'-0"	Single-Flush									
36A	A	40	7	3'-0"	7'-0"	Single-Flush									



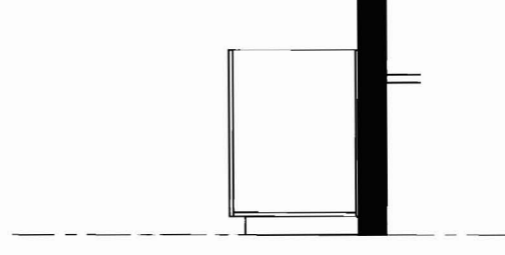
① DOOR AND FRAME TYPES
1/4" = 1'-0"



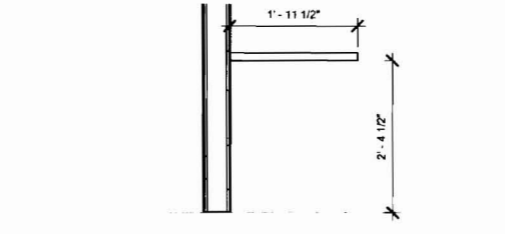
⑬ GALLERY PANELS
1/4" = 1'-0"



② Casework Detail Conf. Buffet Counter
3/4" = 1'-0"



③ Casework Detail Photo Rm
3/4" = 1'-0"



⑰ CASEWORK RADIO
3/4" = 1'-0"

144 Elm Street - P.O. Box 618
Portland, Maine 04104
Tel. 207.772.3846
Fax. 207.772.1070
www.sart.com

ARCHITECTURE
ENGINEERING
PLANNING
INTERIOR DESIGN
COMMISSIONING

SART

561 Congress Street, Portland, ME
The SALT Institute for Documentary Studies
Enter address here

Permit Set

DOOR SCHEDULE &
DETAILS

AE611