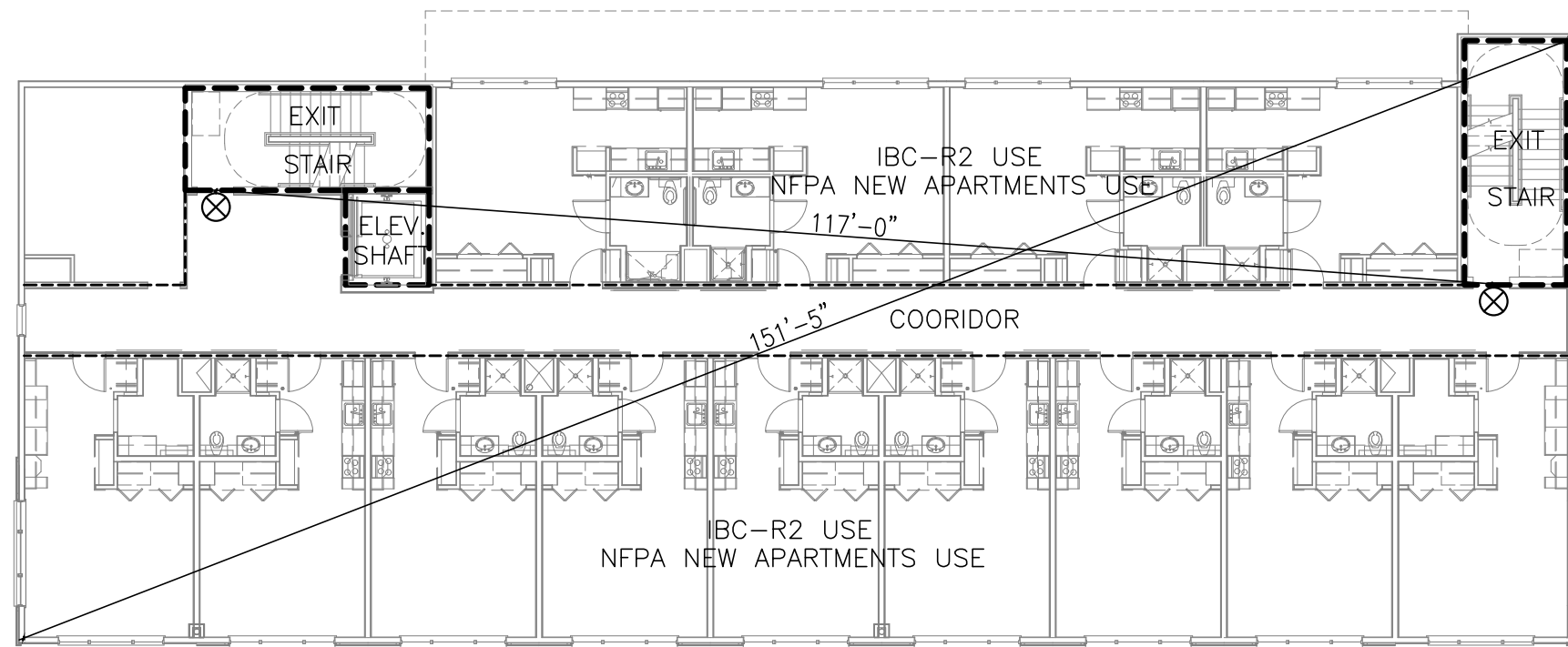
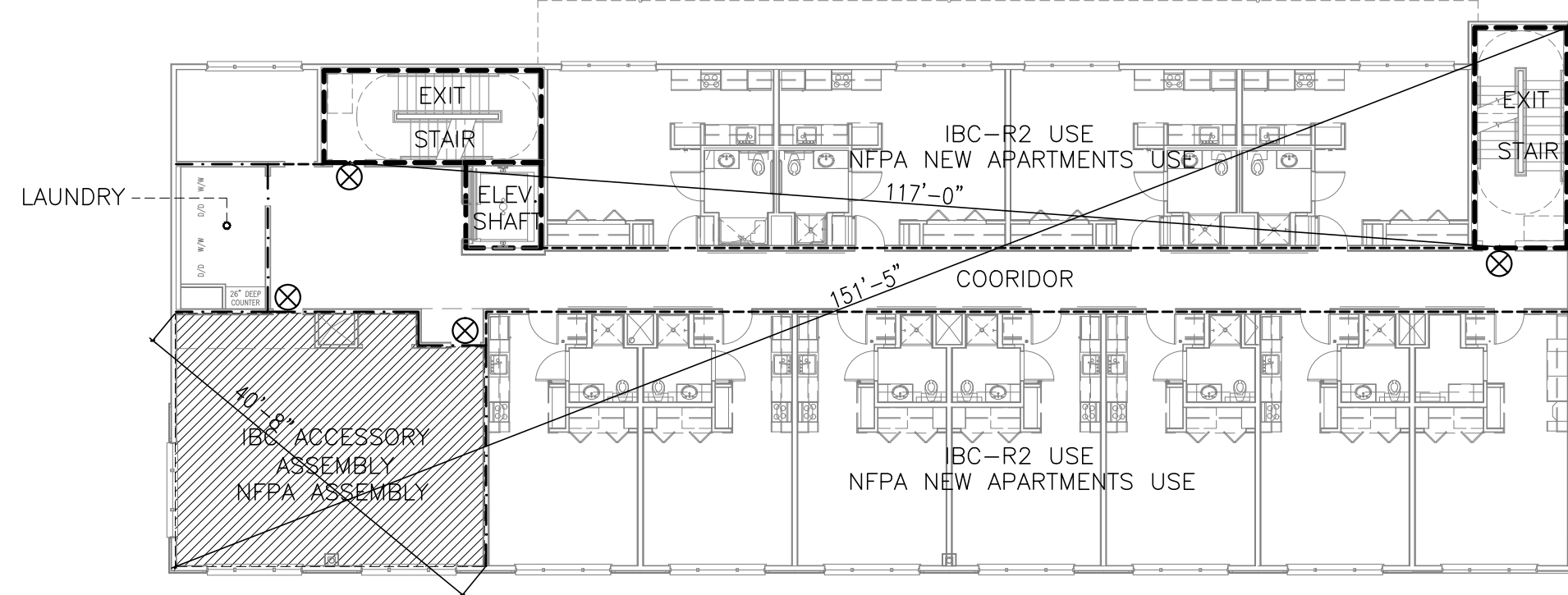


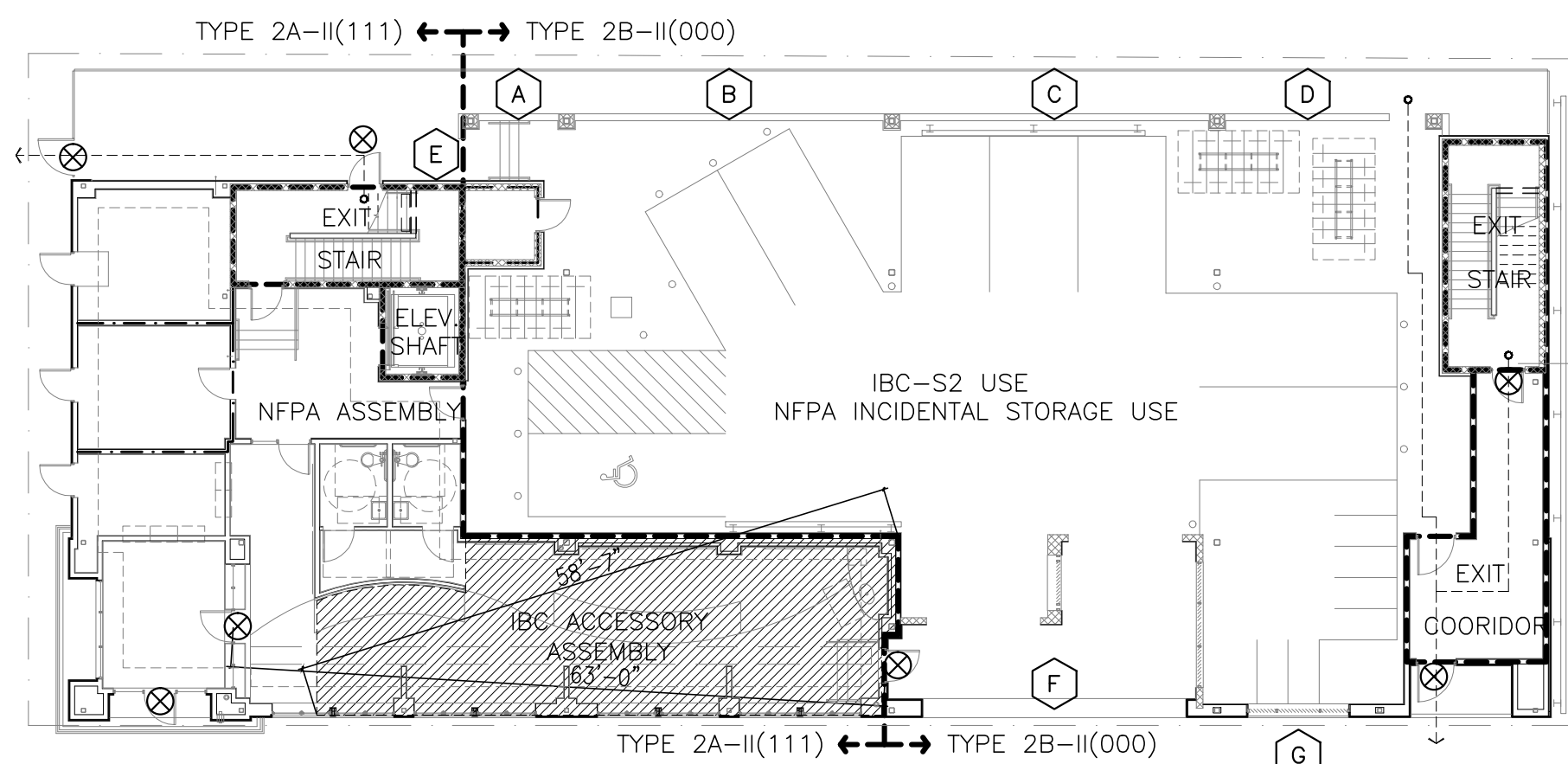
**1 PLAN FOURTH FLOOR** TYPE 5 A-V(III) PROTECTED COMBUSTIBLE  
 REFERENCED FROM: SCALE: 1/16" = 1'-0"



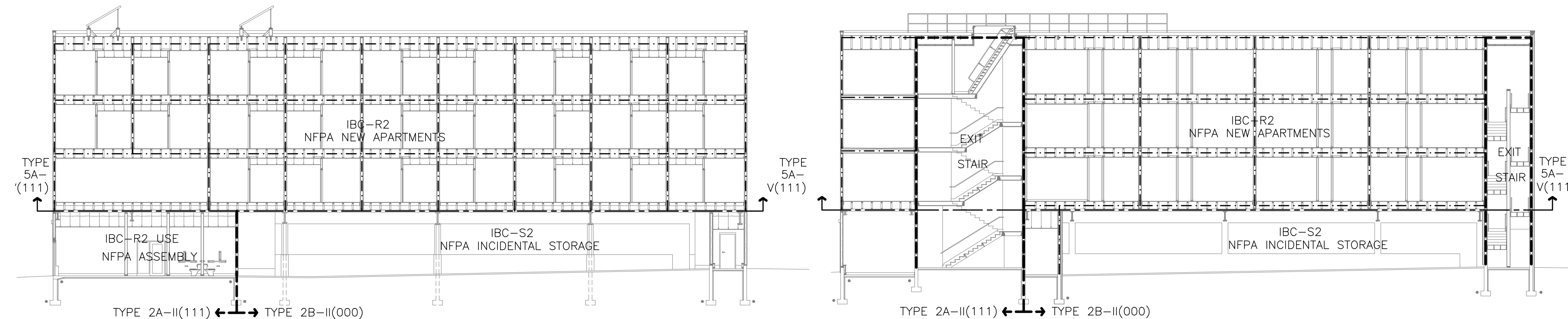
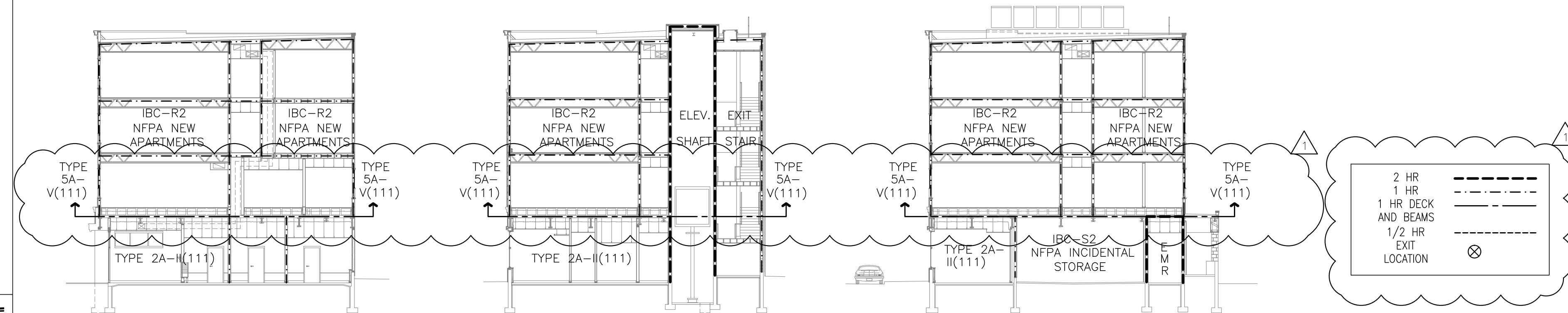
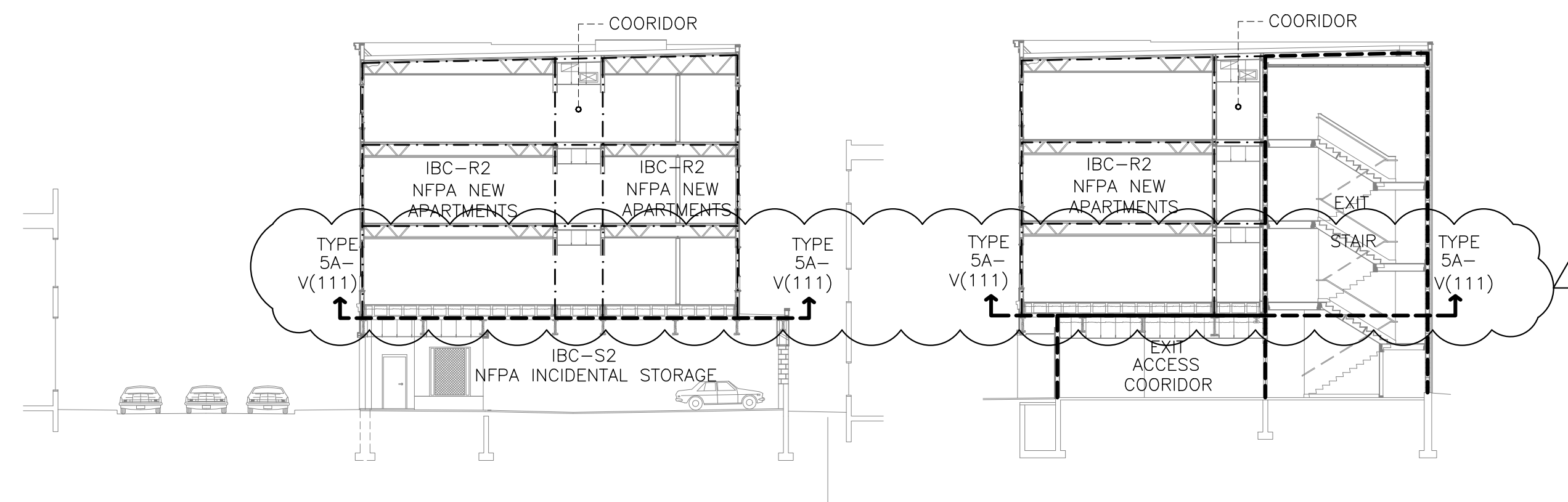
**4 PLAN THIRD FLOOR** TYPE 5 A-V(III) PROTECTED COMBUSTIBLE  
 REFERENCED FROM: SCALE: 1/16" = 1'-0"



**7 PLAN SECOND FLOOR** TYPE 5 A-V(III) PROTECTED COMBUSTIBLE  
 REFERENCED FROM: SCALE: 1/16" = 1'-0"



**10 PLAN FIRST FLOOR** TYPE 2A-II(III) - TYPE 2B-II(000) MIXED NON-COMBUSTIBLE  
 REFERENCED FROM: SCALE: 1/16" = 1'-0"



**12 BUILDING SECTIONS** REFERENCED FROM: A1.1 SCALE: 1/16" = 1'-0"

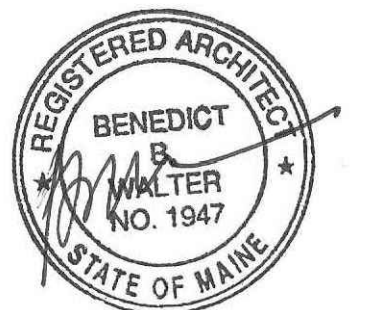


CWS Architects

Architecture  
 Space Planning  
 Value Design

434 Cumberland Avenue  
 Portland, ME 04101  
 Phone: (207)774-4441  
 Fax: (207)774-4016

www.CWSarch.com



Owner:  
**AVESTA OAK STREET LP**  
 307 CUMBERLAND AVE  
 PORTLAND ME 04101

Contractor:  
**WRIGHT-RYAN CONSTRUCTION**  
 10 DANFORTH STREET  
 PORTLAND, ME 4101  
 (207) 773-3625

**OAK STREET LOFTS**

72 OAK STREET  
 PORTLAND, ME

Project No: 07.446.24E

Drawing Title:  
**Code Review Plans**

Scale: 1/16" = 1'-0"

Date: October 25, 2010

Revisions:

REVISION: 3-1-2011

Drawing Number:

**C1**