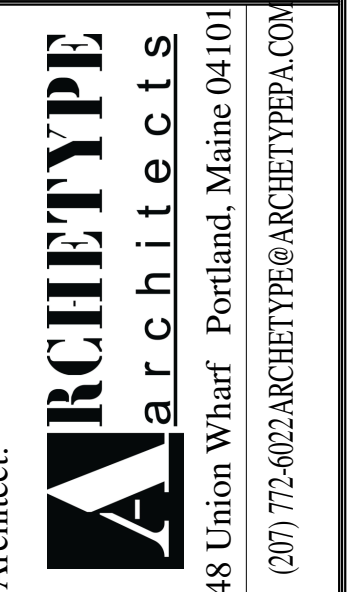


Prepared For:

Consultant:



Project: 84 OAK STREET GARAGE

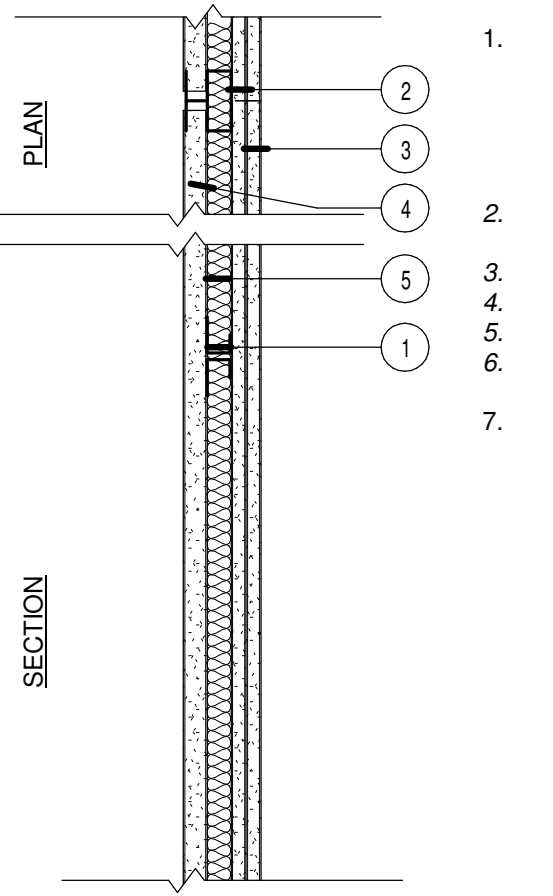
Revisions: 2/28/2018 FOR PERMIT

Date: 2/28/2017 Scale: As indicated

WALL TYPES

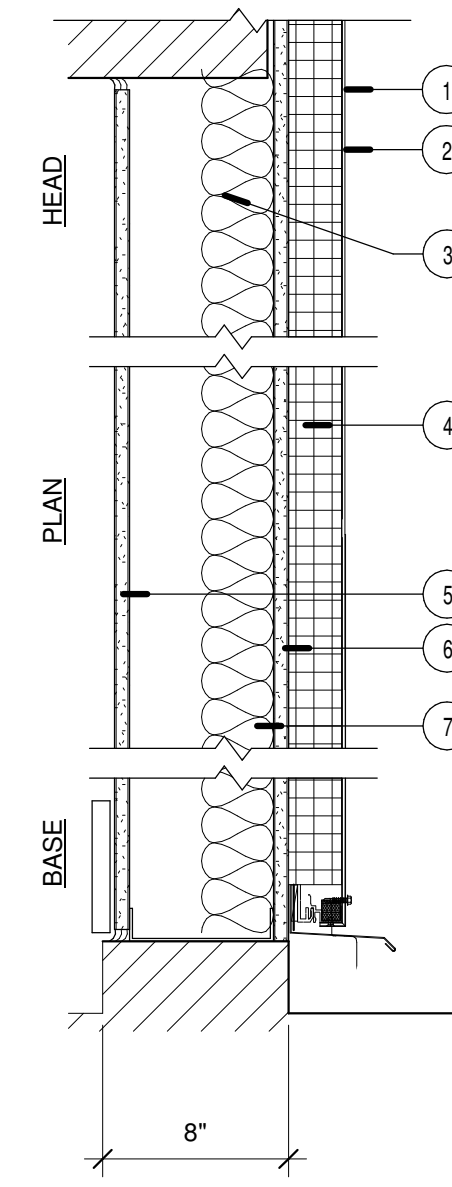
A4.00

LABEL 2 HR W01 2 HR NON-BEARING SHAFT WALL DESIGN NUMBER - UL - U415 SYSTEM B



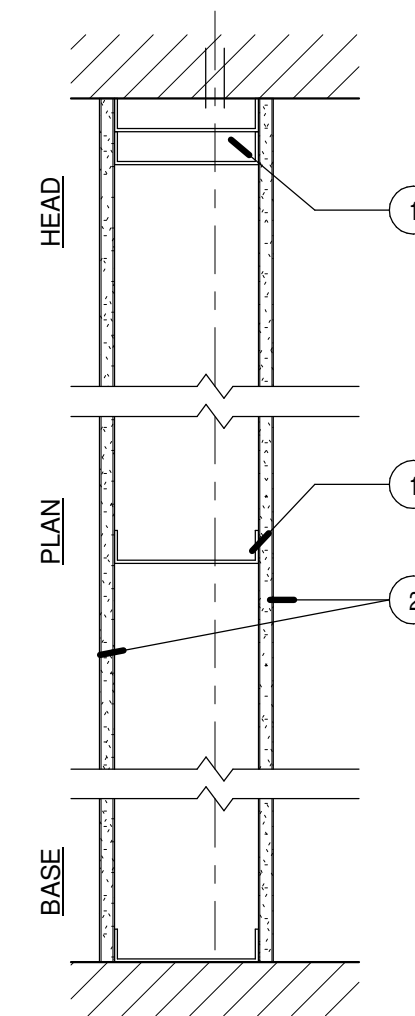
- FLOOR, SIDE AND CEILING RUNNER - "J" - SHAPED RUNNER, MIN 2 1/2 IN DEEP, WITH UNEQUAL LEGS OF 1 IN AND 2 IN, RUNNERS ATTACHED TO STRUCTURAL SUPPORTS WITH STEEL FASTENERS LOCATED NOT GREATER THAN 2 IN FROM ENDS AND NOT GREATER THAN 24 IN. O.C.
- STEEL STUDS - "C"-H SHAPED STUDS, MIN 2 1/2" DEEP, AND SPACED 24" O.C.
- GYPSUM BOARD - SYSTEMS A & D 5/8" THICK
- GYPSUM BOARD - (1) 1" THICK, DENSGLOSS PANELS
- SOUND BATT - MINERAL WOOL INSULATION BATTS.
- SEALANT (NOT SHOWN) - UL AND STC LISTED SEALANT FULL PERIMETER BOTH SIDES.
- TAPE AND COMPOUND - (ADDED/NOT SHOWN) - VINYL, DRY OR PREMIXED JOINT COMPOUND, APPLIED IN TWO COATS TO JOISTS AND SCREW HEADS, PAPER TAPE, 2 IN. WIDE, EMBEDDED IN FIRST LAYER OF COMPOUND OVER ALL JOINTS.

W02 EXTERIOR WALL - METAL PANEL



- EXTERIOR SIDING - METAL PANEL
- AIR/MOISTURE BARRIER - CONTINUOUS BARRIER
- STUDS - 6" STEEL STUD 12" O.C.
- INSULATION - 2" RIGID INSULATION
- INTERIOR WALL BOARD - (1) ONE LAYER 5/8" GYPSUM WALLBOARD
- DENSGLOSS - (1) 1 LAYER 5/8" BATT INSULATION R-13
- BLOCKING - (NOT SHOWN) BLOCKING AS NEEDED FOR OTHER TRADES. GC TO COORDINATE.
- TRIM - (N.I.C.) BY FUTURE TENANT.

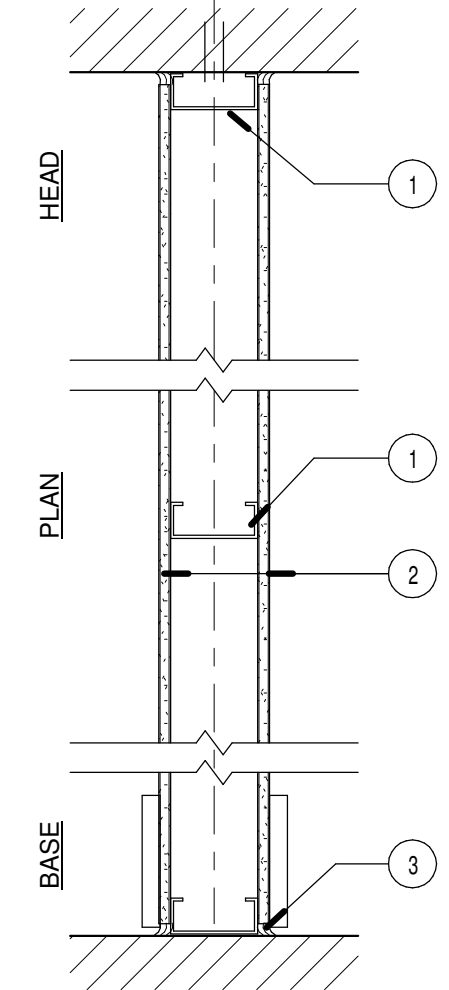
W03 WP 1072



LABEL 1 HR W04 1 HR DEMISING WALL AT GARAGES 45 TO 49 STC

- STUDS - 6" METAL STUDS, MAX STUD SPACING 24" O.C.
- GYP BOARD - (1) ONE LAYER 5/8" TUPE X ON EACH SIDE
- BLOCKING - (NOT SHOWN) BLOCKING AS NEEDED

LABEL 1 HR W04 WP 1351

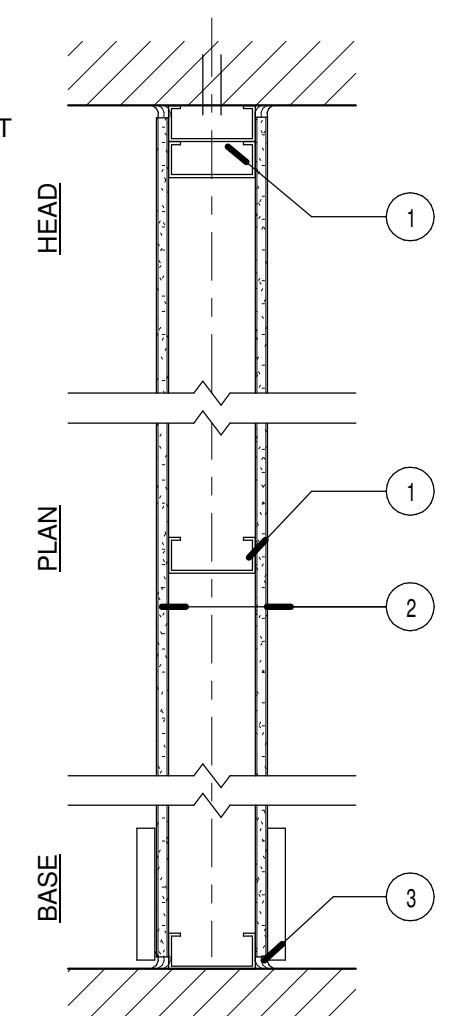


LABEL 1 HR W04 1 HR RATED STAIR WALL DESIGN NUMBER - UL - U419

- STUDS - 3 5/8" METAL STUDS, MAX STUD SPACING 24" O.C.
- INTERIOR WALLBOARD - (1) ONE LAYER 5/8" GYPSUM TYPE "X" WALLBOARD APPLIED PARALLEL OR AT RIGHT ANGLES TO STUDS.
- CAULKING AND SEALANTS - A BEAD OF ACOUSTICAL SEALANT APPLIED AROUND THE PARTITION PERIMETER FOR SOUND CONTROL, BOTH SIDES OF WALL.
- BLOCKING - (NOT SHOWN) BLOCKING AS NEEDED
- TRIM - (N.I.C.) BY FUTURE TENANT

BRACING: ALL DESIGN DETAILS ENHANCING THE STRUCTURAL INTEGRITY OF THE WALL ASSEMBLY, INCLUDING THE AXIAL DESIGN LOAD OF THE STUDS, SHALL BE AS SPECIFIED BY THE STEEL STUD DESIGNER AND/OR PRODUCER, AND SHALL MEET THE REQUIREMENT OF ALL APPLICABLE LOCAL CODE AGENCIES.

W05A W05B NON-BEARING PARTITION 2X4 2X6



- STUDS - 3 5/8" METAL STUDS, MAX STUD SPACING 24" O.C. NOTE: WALL TYPE "B" USES 6" STUDS IN PLACE OF 3 5/8" STUDS.
- INTERIOR WALLBOARD - (1) ONE LAYER 1/2" GYPSUM WALLBOARD APPLIED PARALLEL OR AT RIGHT ANGLES TO STUDS.
- SEALANTS - A BEAD OF SEALANT APPLIED AROUND THE PARTITION PERIMETER FOR SOUND CONTROL, BOTH SIDES OF WALL.
- BLOCKING - (NOT SHOWN) BLOCKING AS NEEDED
- TRIM - (N.I.C.) BY FUTURE TENANT

1 WALL 01 - 2 HR SHAFT WALL ASSEMBLY 1 1/2" = 1'-0"

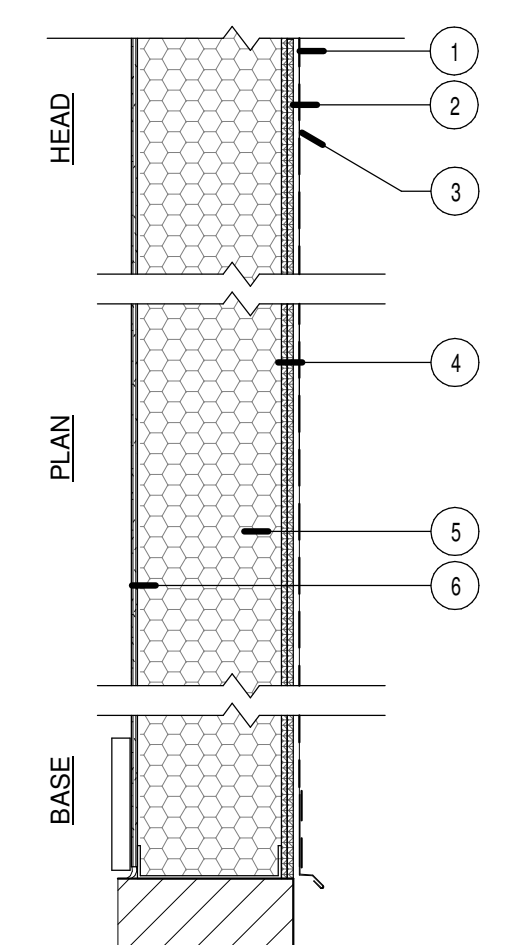
2 WALL 02 - EXTERIOR WALL - METAL PANEL 1 1/2" = 1'-0"

3 WALL 03 - GARAGE DEMISING WALL 1 1/2" = 1'-0"

4 WALL 04 - 1 HR STAIR WALL 1 1/2" = 1'-0"

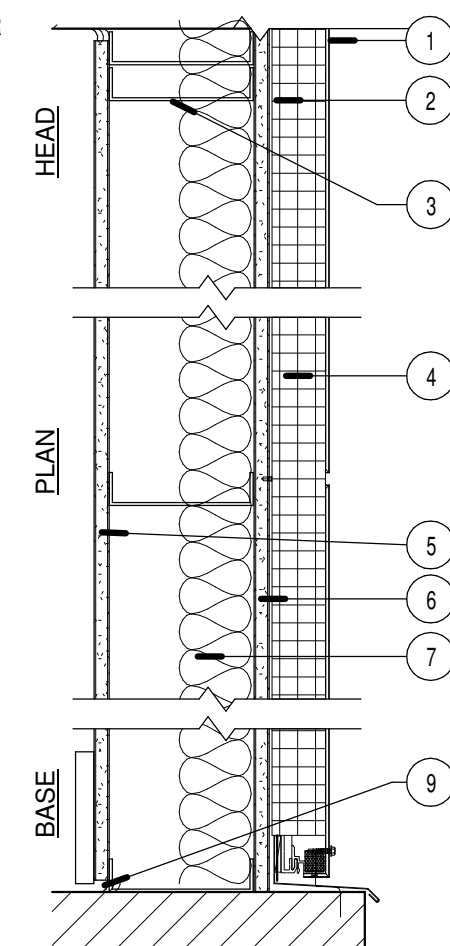
05 WALL 05A&B - INTERIOR PARTITION 1 1/2" = 1'-0"

W06 EXTERIOR WALL - METAL PANEL



- EXTERIOR SIDING - METAL PANEL
- AIR/MOISTURE BARRIER - CONTINUOUS BARRIER OVER EXTERIOR FLEXBOARD
- FLEXBOARD - (2) TWO LAYERS 1/4"
- STUDS - 6" STEEL STUD 12" O.C.
- INSULATION - SPRAYED
- INTERIOR WALL BOARD - (1) ONE LAYER 1/4" GYPSUM TYPE X WALLBOARD
- BLOCKING - (NOT SHOWN) BLOCKING AS NEEDED FOR OTHER TRADES. GC TO COORDINATE.
- TRIM - (N.I.C.) BY FUTURE TENANT.

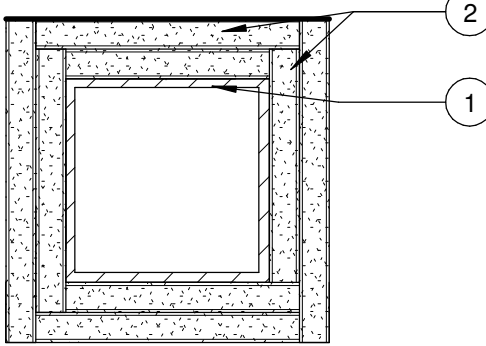
LABEL 1 HR W07 1 HR EXTERIOR WALL - METAL PANEL WP 8122



- EXTERIOR SIDING - METAL PANEL
- AIR/MOISTURE BARRIER - CONTINUOUS BARRIER
- STUDS - 6" STEEL STUD 12" O.C.
- INSULATION - 2" RIGID INSULATION
- INTERIOR WALL BOARD - (1) ONE LAYER 5/8" GYPSUM WALLBOARD TYPE X
- DENSGLOSS - (1) 1 LAYER 5/8" BATT INSULATION R-13
- BLOCKING - (NOT SHOWN) BLOCKING AS NEEDED FOR OTHER TRADES. GC TO COORDINATE.
- TRIM - (N.I.C.) BY FUTURE TENANT.

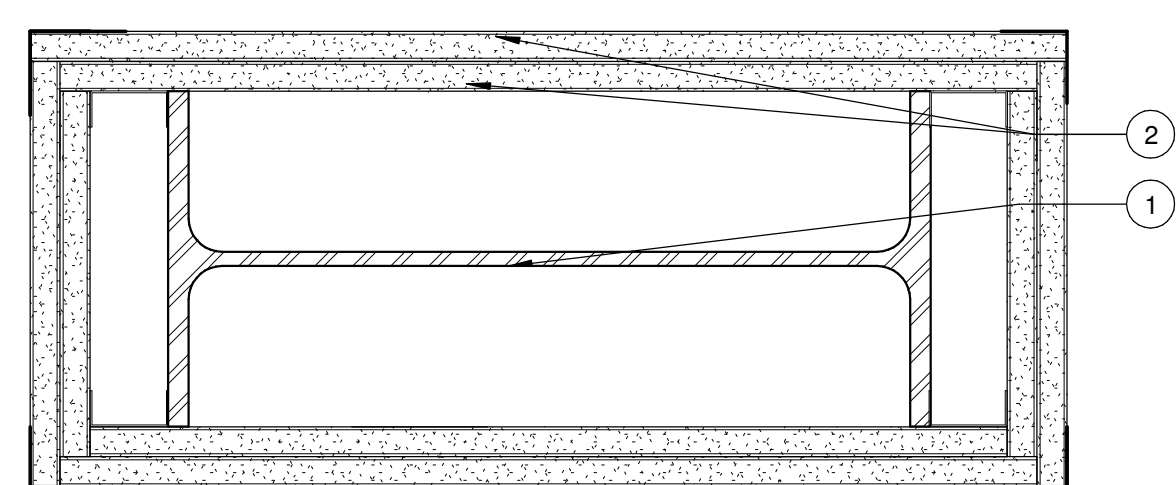
LABEL 1 HR CM 1450 COLUMN DETAIL

- COLUMN - TS4x4x0.188 TUBE STEEL COLUMN
- GYPSUM BOARD - BASE 1/2" TYPE X
- BASE LAYER 1/2" TYPE X GYPSUM WALLBOARD APPLIED AROUND TS4x4x0.188 TUBE STEEL COLUMN AND HELD IN PLACE WITH PAPER MASKING TAPE. SECOND LAYER 1/2" TYPE X GYPSUM WALLBOARD APPLIED AROUND COLUMN AND HELD IN PLACE WITH PAPER MASKING TAPE. FACE LAYER EITHER 24GA. GALVANIZED STEEL COLUMN COVER CONSISTING OF TWO L-SHAPED SECTIONS WITH SNAP-LOCK SHEET STEEL JOINTS OR 22 GA. GALVANIZED STEEL COLUMN COVERS CONSISTING OF TWO L-SHAPED SECTIONS WITH LAP JOINTS FASTENED WITH No. 8x2" SHEET METAL SCREWS 12" O.C. HORIZONTAL JOINTS STAGGERED 24" BETWEEN LAYERS.



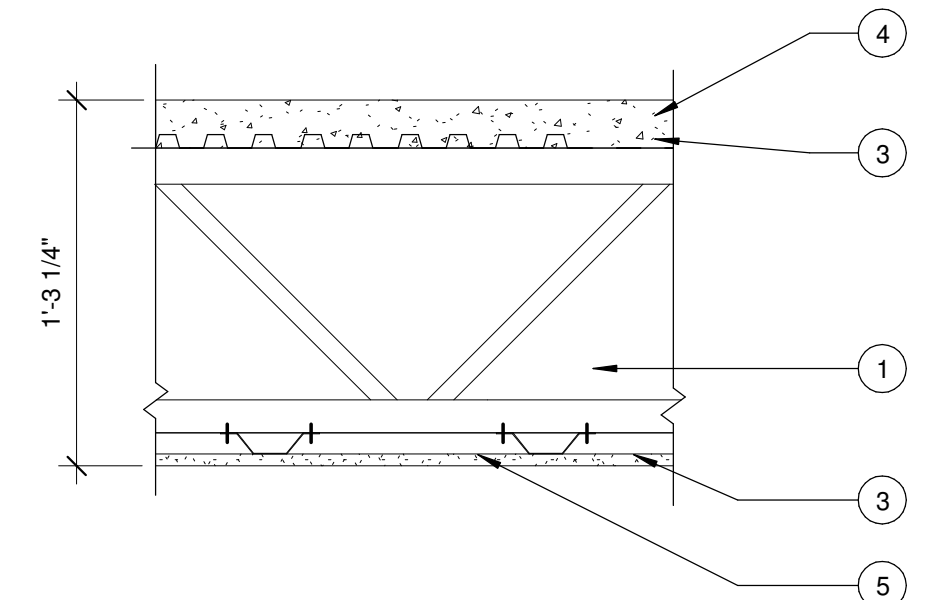
LABEL 1 HR CM 1003

- COLUMN - W14x35 STEEL COLUMN
- GYPSUM BOARD - BASE 1/2" TYPE X
- BASE LAYER 1/2" TYPE X GYPSUM WALLBOARD APPLIED TO 1-5/8", 18 MIL (25 GA.), STEEL STUDS LOCATED AT EACH CORNER OF W14x35 WITH 1" TYPE S DRYWALL SCREWS 24" O.C. FACE LAYER 1/2" TYPE X GYPSUM WALLBOARD APPLIED WITH 1-3/4" TYPE S DRYWALL SCREWS 24" O.C. METAL CORNERBEAR APPLIED TO ALL CORNERS WITH 1" TYPE S DRYWALL SCREW 12" O.C. IN EACH FLANGE. JOINT COMPOUND 1/16" THICK APPLIED OVER CORNERBEAD. HORIZONTAL JOINTS STAGGERED 24" BETWEEN LAYERS.



LABEL 1 HR FLOOR SYSTEM - 1 HOUR FC 1110

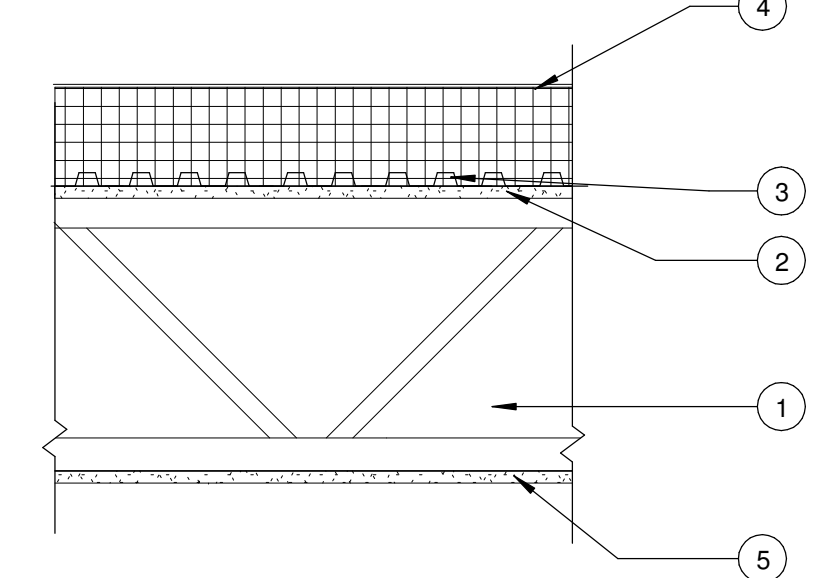
- TRUSSES - STEEL TRUSS 24" O.C.
- FURRING CHANNEL - TIED TO OPEN WEB 24" O.C.
- CORRUGATED STEEL - 9/16" DEEP 28 GA.
- CONCRETE SLAB - 2" MEASURED FROM TOP OF FLUTE
- GYPSUM BOARD - (1) ONE LAYER 1/2" TYPE X



9 FLOOR 01- 1HR FLOOR CEILING SYSTEM 1 1/2" = 1'-0"

ROOF SYSTEM

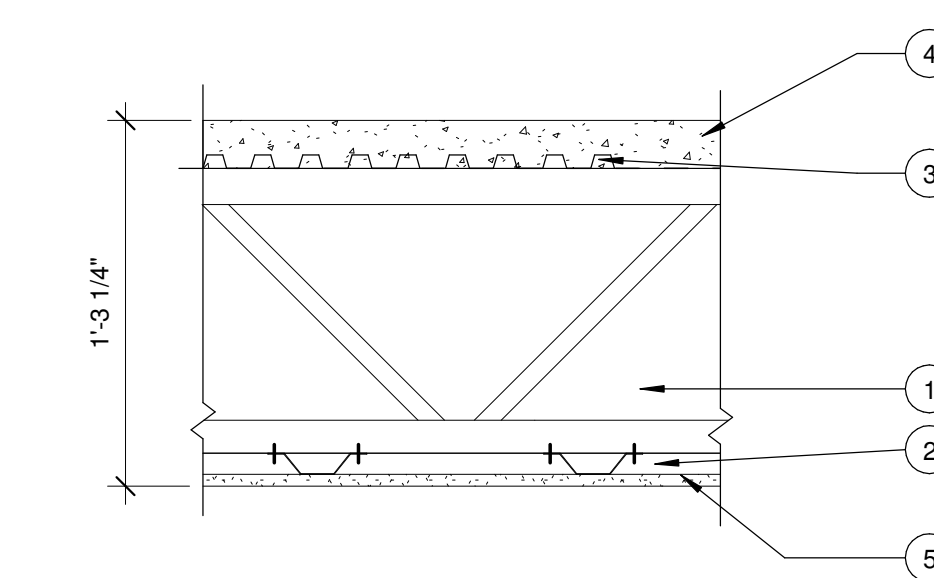
- TRUSSES - STEEL TRUSS 24" O.C.
- 1 1/2" TYPE B, PAINTED STEEL DECK
- 4" POLYISO INSULATION
- EPDM
- 1/2" GYPSUM BOARD



11 ROOF SYSTEM - 01 1 1/2" = 1'-0"

FLOOR SYSTEM

- TRUSSES - STEEL TRUSS 24" O.C.
- FURRING CHANNEL - TIED TO OPEN WEB 24" O.C.
- CORRUGATED STEEL - 9/16" DEEP 28 GA.
- CONCRETE SLAB - 2" MEASURED FROM TOP OF FLUTE
- GYPSUM BOARD - (1) ONE LAYER 1/2"



10 FLOOR 02 - FLOOR CEILING SYSTEM 1 1/2" = 1'-0"

6 WALL 06 - EXTERIOR CURVED WALL - METAL PANEL 1 1/2" = 1'-0"

7 WALL 07 - 1 HR EXTERIOR WALL 1 1/2" = 1'-0"

8 COLUMN DETAIL 3" = 1'-0"

10 FLOOR 02 - FLOOR CEILING SYSTEM 1 1/2" = 1'-0"