

PARTIAL LEVEL 1

NOTES

1. BUILDING IS FULLY SPRINKLED.
2. EGRESS LIGHTING SHALL BE PROVIDED IN ALL CORRIDORS AND PASSAGEWAYS LEADING TO EXITS. A MINIMUM AVERAGE OF 1 FOOT-CANDLE IS TO BE PROVIDED. THE SOURCE OF ILLUMINATION SHALL BE PROVIDED FOR 90 MINUTES AND CAN BE ANY OF THE FOLLOWING:
 - a. BATTERY BALLAST LIGHT FIXTURES
 - b. INDIVIDUAL BATTERY UNIT WITH UNIT MONITOR OR REMOTE LAMPS.

SYMBOL LEGEND

- EXIT SIGN, ARROWS INDICATE EGRESS DIRECTION, SHADING INDICATES SIGN FACE
- FIRE ALARM AUDIBLE/VISUAL NOTIFICATION APPLIANCE. NUMBER IN PARENTHESES INDICATES ILLUMINATION IN CANDELA
- FIRE ALARM VISIBLE-ONLY NOTIFICATION APPLIANCE
- FIRE EXTINGUISHER, SURFACE MOUNTED
- EXISTING 2 HR FIRE RATED ENCLOSURE MAINTAIN CONTINUITY OF ENCLOSURE. REPAIR ANY DEFICIENCIES FOUND.

144 Fore Street/P.O. Box 618
 Portland, Maine 04104
 tel. (207) 772-3846
 fax. (207) 772-1070
 www.smrinc.com

ARCHITECTURE
 ENGINEERING
 PLANNING
 INTERIOR DESIGN
 COMMISSIONING



39 FOREST AVE
IT FIT-UP RENOVATION
 Portland, Maine



ISSUED FOR PERMITTING
 6-20-11

CURRENT ISSUE STATUS:

REV	DESCRIPTION	DATE
0	ISSUED FOR PERMITTING	6-20-11

SCALE: 1/16" = 1'-0"

PROJECT MANAGER: DJV

JC/DRAWN BY: MDR

A/E OF RECORD:

CAD FILE: G-002-11082

PROJECT NO: 11082

DATE:

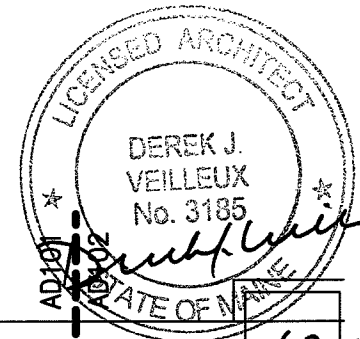
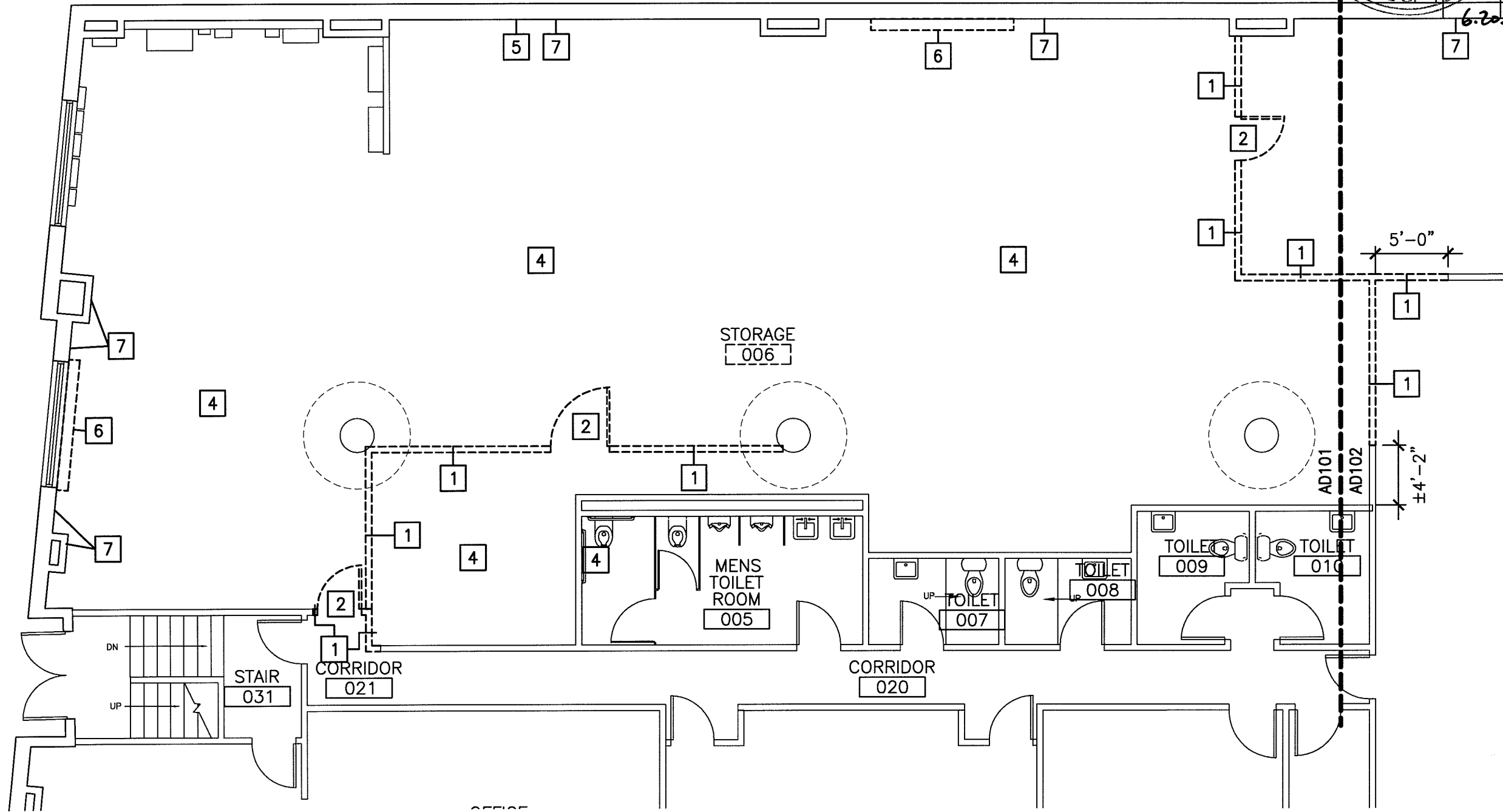
SHEET TITLE:

LIFE SAFETY PLANS

SHEET No.

G-002

© COPYRIGHT 2009 SMRT INC.



144 Fore Street/P.O. Box 618
 Portland, Maine 04104
 tel. (207) 772-3846
 fax. (207) 772-1070
 www.smrinc.com



ARCHITECTURE
 ENGINEERING
 PLANNING
 INTERIOR DESIGN
 COMMISSIONING

SMRT

39 FOREST AVE
 IT FIT-UP RENOVATION
 Portland, Maine

ISSUED FOR PERMITTING
 6-20-11

CURRENT ISSUE STATUS:

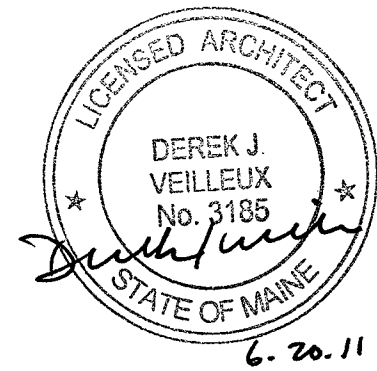
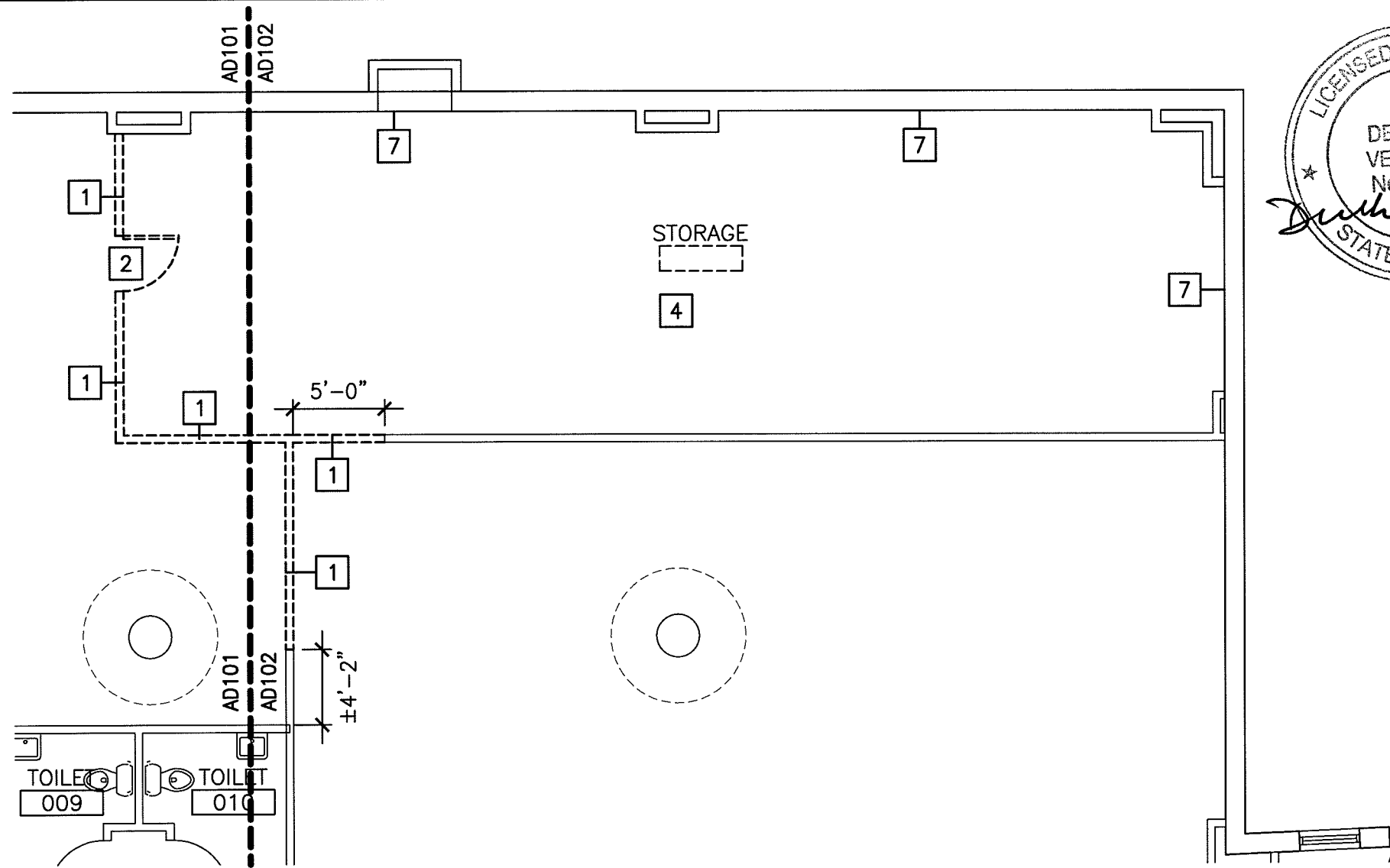
REV	DESCRIPTION	DATE

SCALE: 1/8"=1'-0"
 PROJECT MANAGER: DJV
 JC/DRAWN BY: MDR
 A/E OF RECORD:
 CAD FILE: AD101-11082
 PROJECT NO: 11082
 DATE:

SHEET TITLE:
**PARTIAL DEMOLITION
 FLOOR PLAN**

SHEET No. **AD101**
 © COPYRIGHT 2009 SMRT INC.

NOTE:
 SEE AD102 FOR GENERAL
 DEMOLITION NOTES AND KEYED
 NOTES.



GENERAL DEMOLITION NOTES

1. COORDINATE EXTENT OF DEMOLITION WITH LOCATIONS OF PARTITIONS DESCRIBED ON PLANS AND WITH LOCATIONS OF FINISHES NOTED AS EXISTING TO REMAIN.
2. ANY WALL, PARTITION OR SURFACE DISTURBED BECAUSE OF NEW WORK OR DEMOLITION SHALL BE PATCHED AND FINISHED CONTINUOUSLY TO THE NEAREST CORNER UNLESS NOTED OTHERWISE, MATCH EXISTING ADJACENT CONSTRUCTION FINISHES, CONTINUITY AND FIRE RATINGS UNLESS NOTED OTHERWISE.
3. PROTECT ALL FINISHES, MATERIALS AND EQUIPMENT NOTED AS EXISTING TO REMAIN. CONTRACTOR SHALL BE RESPONSIBLE TO REPLACE ALL FINISHES, MATERIALS AND EQUIPMENT DAMAGED DURING CONSTRUCTION.

DEMOLITION PLAN KEY NOTES

- 1 REMOVE PARTITION. PATCH ADJOINING WALL TO MATCH ADJACENT FINISH.
- 2 REMOVE DOOR AND FRAME.
- 3 NOT USED
- 4 REMOVE ANY EXISTING FLOORING AND PREPARE SURFACE FOR SCHEDULED FLOORING.
- 5 CUT OPENING IN EXTERIOR WALL TO PROVIDE MAKE UP AIR, COODINATE WITH MECH CONTRACTOR,
- 6 REMOVE EXISTING CAST IRON RADIATOR
- 7 SCRAP/SAND EXISTING CONCRETE FOUNDATION AND PREPARE FOR PTD.

144 Fore Street/P.O. Box 618
 Portland, Maine 04104
 tel. (207) 772-3846
 fax. (207) 772-1070
 www.smrinc.com

ARCHITECTURE
 ENGINEERING
 PLANNING
 INTERIOR DESIGN
 COMMISSIONING



39 FOREST AVE
IT FIT-UP RENOVATION
 Portland, Maine



ISSUED FOR PERMITTING
 6-20-11

CURRENT ISSUE STATUS:

REV	DESCRIPTION	DATE

SCALE: 1/8"=1'-0"

PROJECT MANAGER: DJV

JC/DRAWN BY: MDR

A/E OF RECORD:

CAD FILE: AD102-11082

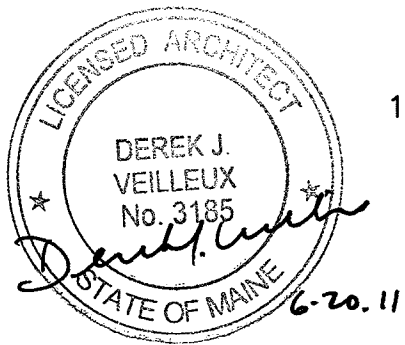
PROJECT NO: 11082

DATE:

SHEET TITLE:
PARTIAL DEMOLITION FLOOR PLAN

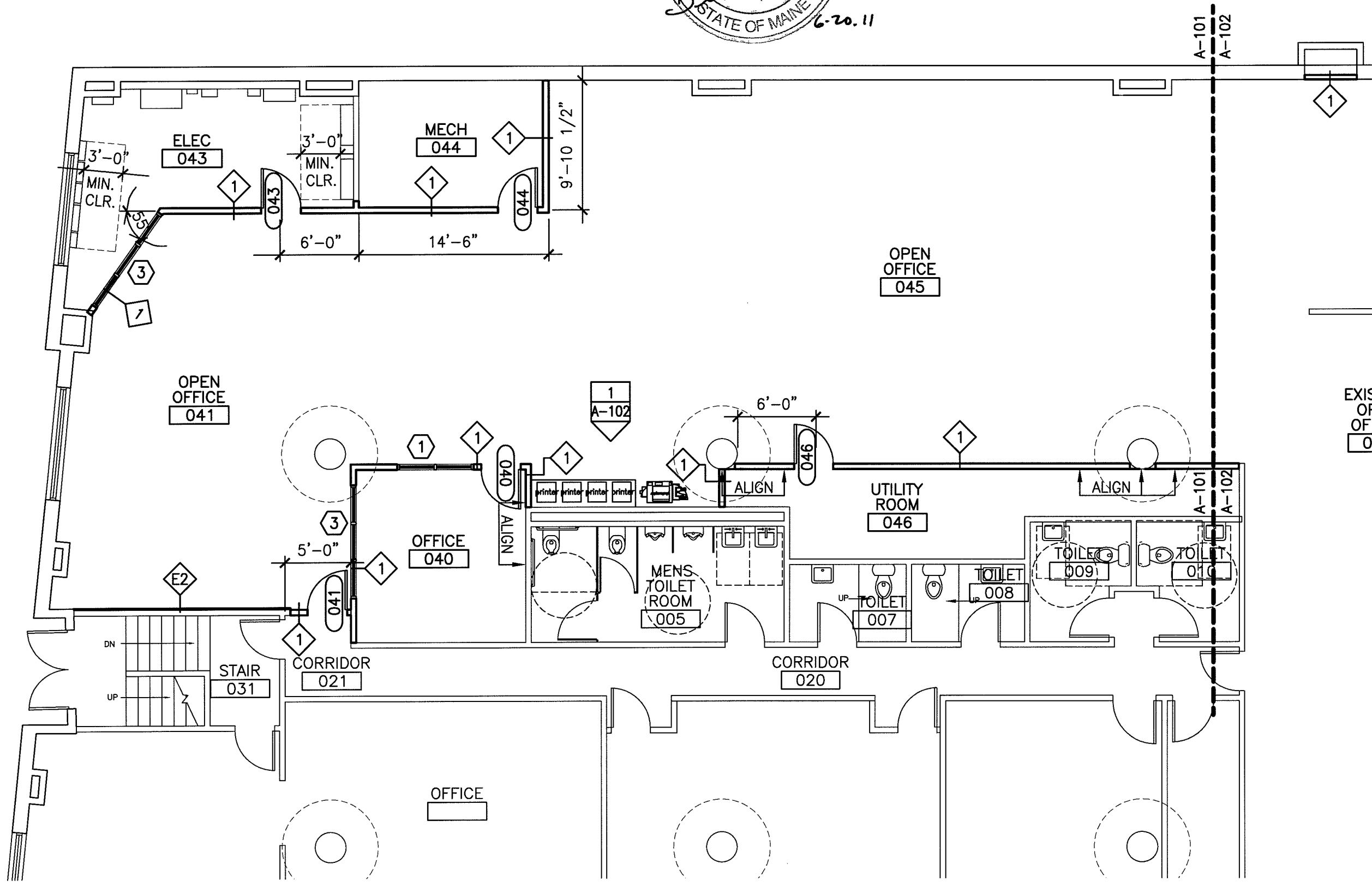
SHEET No. **AD102**

© COPYRIGHT 2009 SMRT INC.



FLOOR PLAN NOTES

1. DIMENSIONS SHOWN ARE APPROXIMATE. WHERE POSSIBLE, ALIGN STUDS WITH FLAT, WAFFLE SLB RIBS FOR EASE OF CONSTRUCTIBILITY.



144 Fore Street/P.O. Box 618
 Portland, Maine 04104
 tel. (207) 772-3846
 fax. (207) 772-1070
 www.smrinc.com

ARCHITECTURE
 ENGINEERING
 PLANNING
 INTERIOR DESIGN
 COMMISSIONING



39 FOREST AVE
IT FIT-UP RENOVATION
 Portland, Maine



ISSUED FOR PERMITTING
 6-20-11

CURRENT ISSUE STATUS:

REV	DESCRIPTION	DATE
0	ISSUED FOR PERMITTING	6-20-11

SCALE: 1/8"=1'-0"

PROJECT MANAGER: DJV

JC/DRAWN BY: MDR

A/E OF RECORD:

CAD FILE: A-101-11009

PROJECT NO: 11082

DATE:

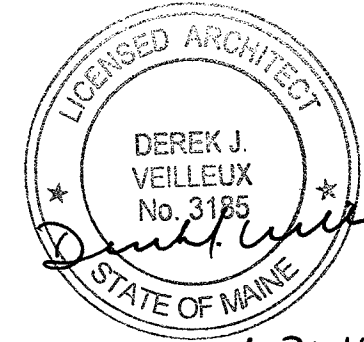
SHEET TITLE:
PARTIAL FLOOR PLAN
LEVEL 1

SHEET No. **A-101**

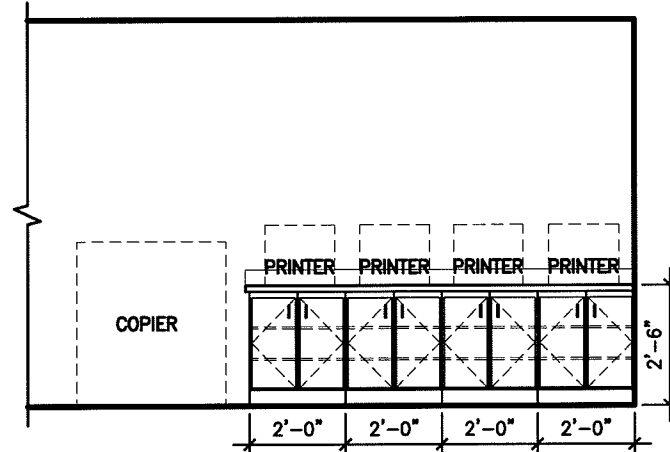
© COPYRIGHT 2009 SMRT INC.

FLOOR PLAN NOTES

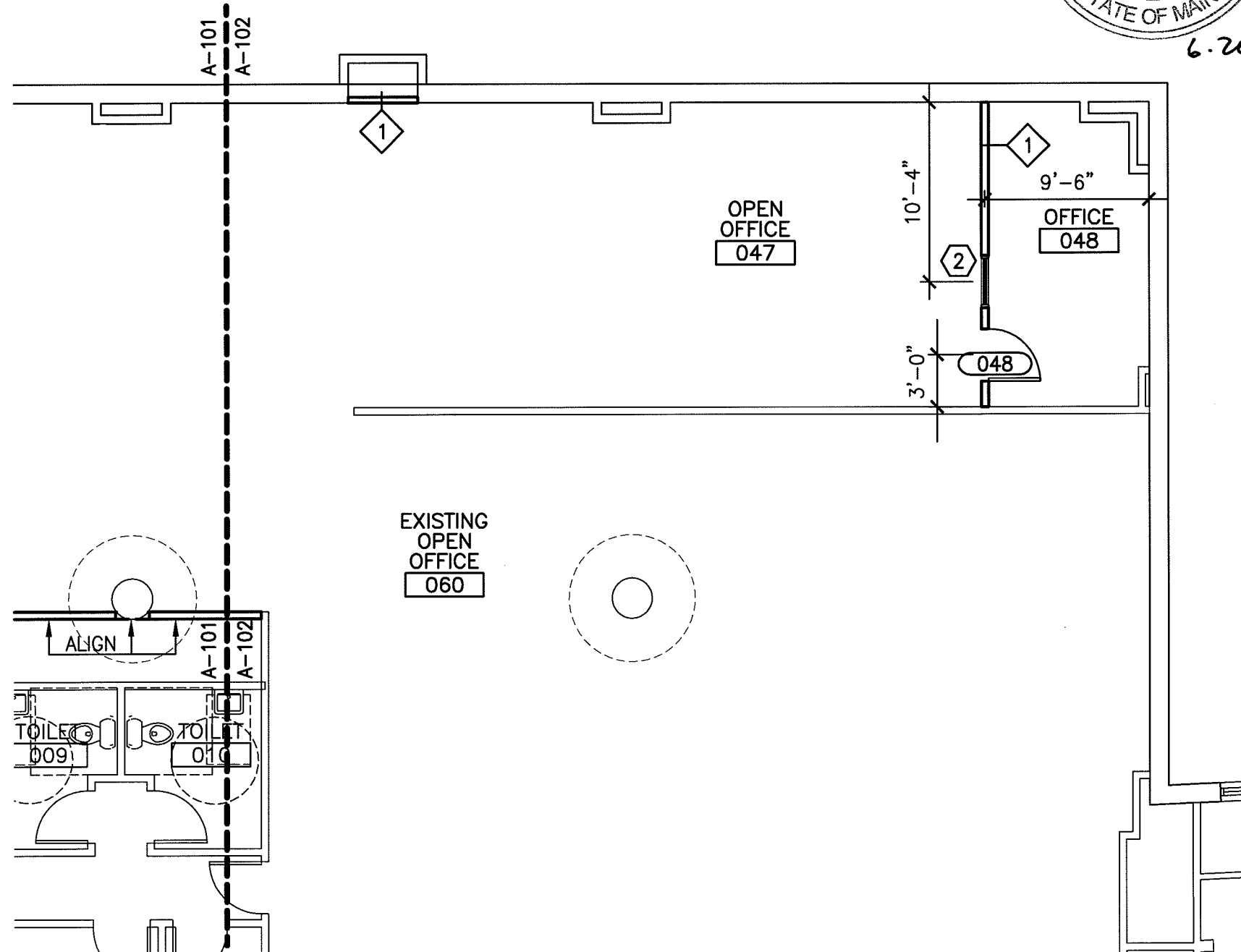
1. DIMENSIONS SHOWN ARE APPROXIMATE. WHERE POSSIBLE, ALIGN STUDS WITH FLAT, WAFFLE SLB RIBS FOR EASE OF CONSTRUCTIBILITY.



6.20.11



INTERIOR ELEVATION - 1



144 Fore Street/P.O. Box 618
Portland, Maine 04104
tel. (207) 772-3846
fax. (207) 772-1070
www.smrinc.com

ARCHITECTURE
ENGINEERING
PLANNING
INTERIOR DESIGN
COMMISSIONING



39 FOREST AVE
IT FIT-UP RENOVATION
Portland, Maine



ISSUED FOR PERMITTING
6-20-11

CURRENT ISSUE STATUS:

REV	DESCRIPTION	DATE
0	ISSUED FOR PERMITTING	6-20-11

SCALE: 1/8"=1'-0"

PROJECT MANAGER: DJV

JC/DRAWN BY: MDR

A/E OF RECORD:

CAD FILE: A-102-11009

PROJECT NO: 11082

DATE:

SHEET TITLE:
PARTIAL FLOOR PLAN
LEVEL 2

SHEET No. **A-102**

© COPYRIGHT 2009 SMRT INC.

ROOM FINISH SCHEDULE

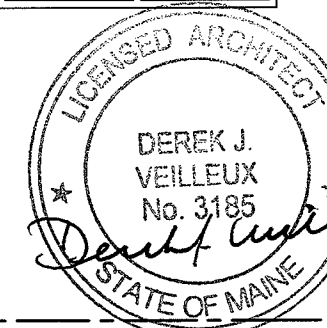
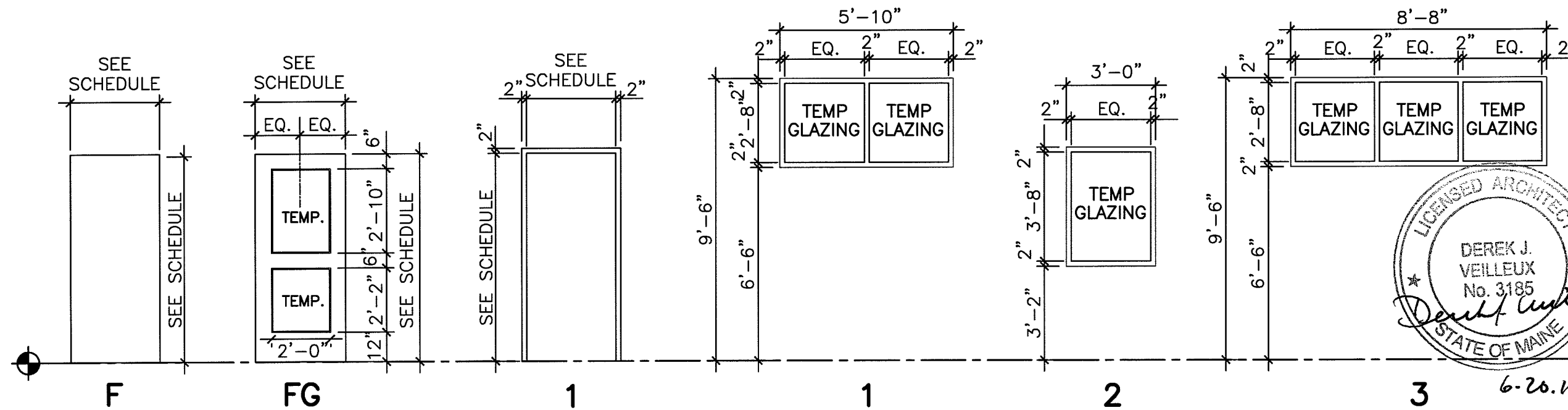
ROOM NUMBER	ROOM NAME	FLOOR	BASE	WALLS				CEILING		ROOM NUMBER	REMARKS
				NORTH	SOUTH	EAST	WEST	MATERIAL	HEIGHT		
021	CORRIDOR	←			EXISTING				→	021	
031	STAIR	←			EXISTING				→	031	
040	OFFICE	CARPET	RB	PTD	PTD	PTD	PTD	PTD	E	040	
041	OPEN OFFICE	CARPET	RB	PTD	PTD	PTD	PTD	PTD	E	041	
043	ELEC	←			EXISTING				→	043	
044	MECH	←			EXISTING				→	044	
045	OPEN OFFICE	CARPET	RB	PTD	PTD	PTD	PTD	PTD	E	045	
046	MECH	←			EXISTING				→	046	PTD AS REQUIRED
047	OPEN OFFICE	CARPET	RB	PTD	PTD	PTD	PTD	PTD	E	047	
048	OPEN OFFICE	CARPET	RB	PTD	PTD	PTD	PTD	PTD	E	048	

NOTES

- ALL FINISH MATERIAL SELECTIONS ARE BY OWNER

DOOR SCHEDULE

DOOR NUMBER	DOOR			GLAZING	FRAME MATERIAL	FIRE RATING (MIN.)	REMARKS
	SIZE	MATERIAL	ELEVATION				
040	3'-0"x7'-0"	WD	FG	TEMP	HM		
041	3'-0"x7'-0"	WD	FG	TEMP	HM	20	SMOKE, 20 MIN, CLOSER
043	3'-0"x7'-0"	WD	F	-	HM		
044	3'-0"x7'-0"	WD	F	-	HM		
046	3'-0"x7'-0"	WD	F	-	HM		
048	3'-0"x7'-0"	WD	FG	TEMP	HM		



ARCHITECTURE
 ENGINEERING
 PLANNING
 INTERIOR DESIGN
 COMMISSIONING
SMRTI
 144 Fore Street/P.O. Box 618
 Portland, Maine 04104
 tel. (207) 772-3846
 fax. (207) 772-1070
 www.smrtinc.com

39 FOREST AVE
IT FIT-UP RENOVATION
 Portland, Maine

ISSUED FOR PERMITTING
6-20-11

CURRENT ISSUE STATUS:

REV	DESCRIPTION	DATE
0	ISSUED FOR PERMITTING	6-20-11

SCALE:	
PROJECT MANAGER:	DJV
JC/DRAWN BY:	MDR
A/E OF RECORD:	
CAD FILE:	A-103-11009
PROJECT NO:	11082
DATE:	
SHEET TITLE:	SCHEDULES
SHEET No.	A-103