

NOTE: ALL FIRE EXPROSSION HEADS TO REMAIN AS IS.

⊕ INDICATES NEW RECESS LIGHTS

CLOSE UP EXIST. WINDOW WITH 1/2" GYP. BD - PAINT EXTERIOR SIDE BLACK

EXIST. HEAT PUMP

EXIST. 4" PVC

EXIST. HEAT PUMP

BACK BAY TOWERS #1202

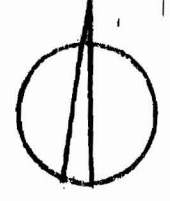
DATE: 2-01-2009

SCALE 1/4" = 1'-0"

INDICATES REMOVE EXISTING WALLS

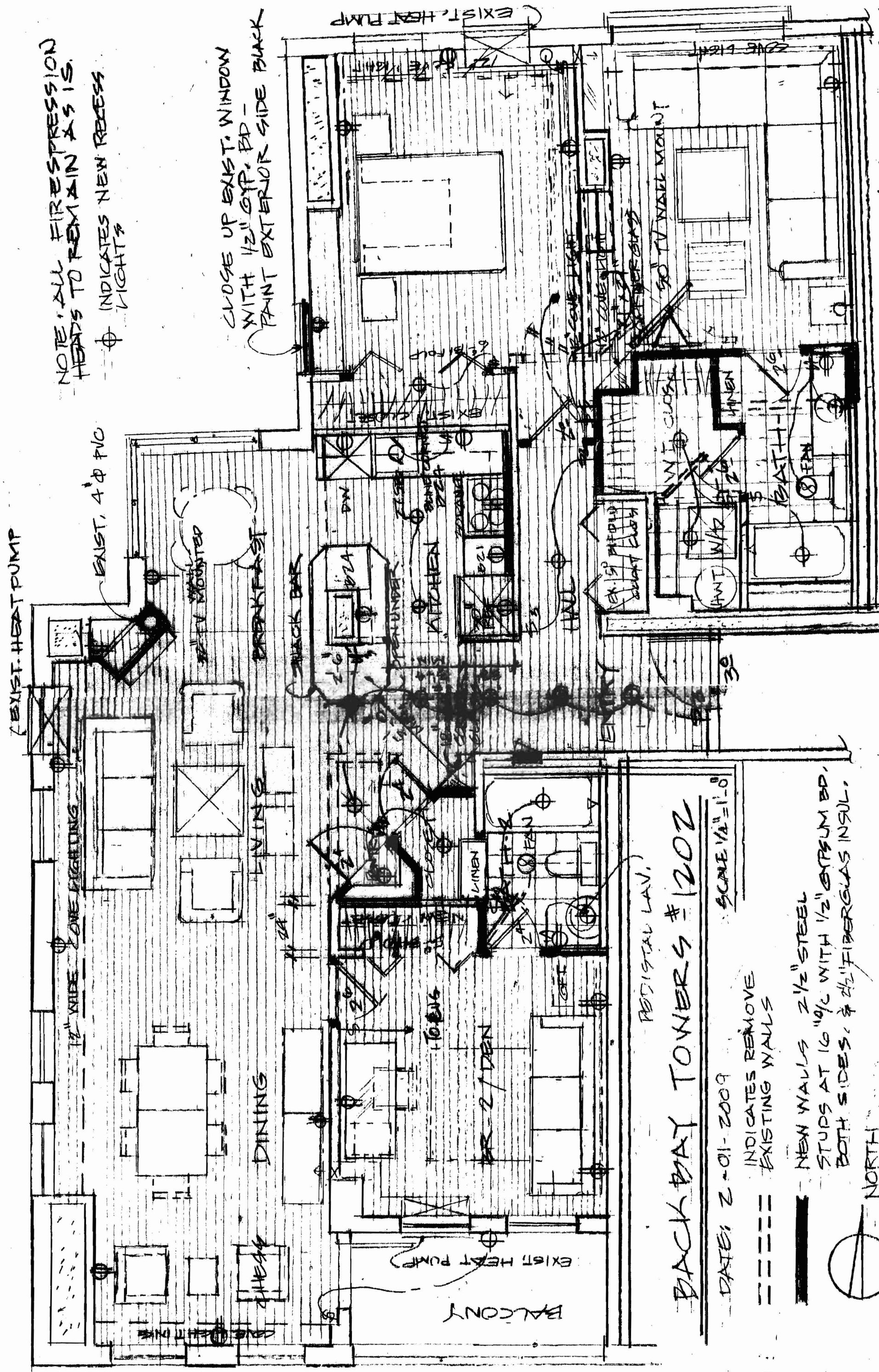
NEW WALLS 2 1/2" STEEL STUPS AT 16" OC WITH 1/2" GYPSUM BD. BOTH SIDES, & 2 1/2" FIBERGLAS INSUL.

NORTH



J.M. WILLENS CORP. DESIGN / BUILD
RESIDENCE FOR JOEL & LINDA WILLENS 2-15-09

ONE MONUMENT WAY PORTLAND ME 04101



NOTE: ALL FIRE EXPROSSION HEADS TO REMAIN AS IS.

⊕ INDICATES NEW RECESS LIGHTS

CLOSE UP EXIST. WINDOW WITH 1/2" GYP. BD - PAINT EXTERIOR SIDE BACK

EXIST. HEAT PUMP

EXIST. 4" PVC

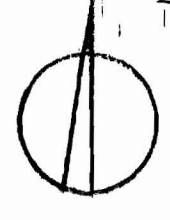
BACK BAY TOWERS #1202

DATE: 2-01-2009

SCALE 1/4" = 1'-0"

INDICATES REMOVE EXISTING WALLS

NEW WALLS 2 1/2" STEEL STUPS AT 16" O/C WITH 1/2" GYPSUM BD. BOTH SIDES, & 2 1/2" FIBERGLAS INSUL.



NORTH

J.M. WILLENS CORP. DESIGN/BUILD ONE MONUMENT WAY PORTLAND, ME 04107
RESIDENCE FOR JOEL & LINDA WILLENS 2-15-09
TEL: 248-808-8200

12" WIDE COVE FLUORESCENT LIGHT

- NEW - DUPLEX
- EXIST. SWITCH
- NEW SWITCH
- EXIST. SURFACE LIGHT TO BE RE
- NEW RECESSED
- NEW CABLE
- EXISTING WALL MOUNT FIRE SUPPRESSION #1
- CEILING MOUNT FST (EXISTII)

EXIST. HVAC WORK UNITS (NO WORK) TYPICAL (3) UNITS IN APARTMENT

EXISTING 4" PVC SANITARY PIPE FIRE CAULK AT FLOOR & CEILING

EXIST. ELECTRIC BASEBOARD HEATER

12" WIDE COVE - FLUORESCENT LIGHTS

MASTER BR. (2) ELECTRIC FIREPLACE SIMULATED LIGHT/FLAME

200 AMP SERVICE PANEL

MASTER SITTING

NEW GFI

LIVING & DINING ROOM

ELECTRIC FIREPLACE WITH SIMULATED LIGHT/FLAME

REMOVE EXIST. SURFACE LIGHT INSTALL 12" RECESS LIGHTS

12" FLUORESCENT LIGHTS

KITCHEN

BR. 2

REMOVE EXIST. SURFACE MOUNTED JUNCTION BOX & RACEWAY

REMOVE (2) EX. RECESSED (7) MINI-RECESSED

EXIST. CONCRETE CLG. LIGHTS-INSTALLED

1/2" GYPSUM BOARD ON 2 1/2" STEEL STUDS AT 16" O/C

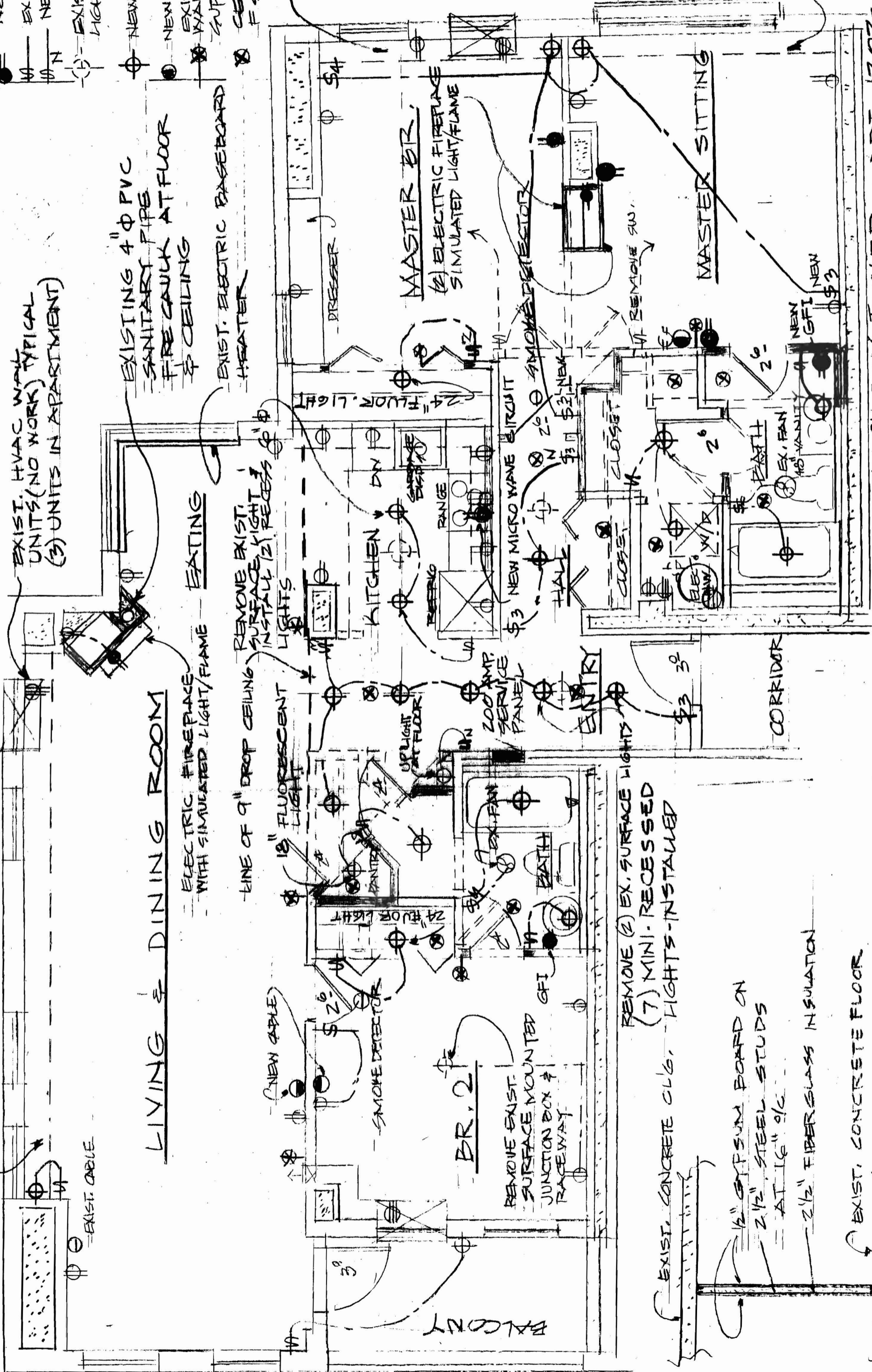
2 1/2" FIBERGLASS INSULATION

EXIST. CONCRETE FLOOR

TYPICAL INTERIOR WALL SECTION SCALE 1/4" = 1'-0"

BACK BAY TOWER - APT. 1202

ELECTRICAL FLOOR & CEILING PLAN SCALE 1/4"



EXIST. CABLE

LIVING & DINING ROOM

ELECTRIC FIREPLACE WITH SIMULATED LIGHT/FIAME

LINE OF 9" DROP CEILING

EXIST. HVAC WALL UNITS (NO WORK) TYPICAL (3) UNITS IN APARTMENT

EXISTING 4" PVC SANITARY PIPES FIRE CAULK AT FLOOR & CEILING

EXIST. ELECTRIC BASEBOARD HEATER

- - EXIST. DUPLEX
- - NEW DUPLEX
- ⊕ - EXIST. SWITCH
- ⊖ - NEW SWITCH
- ⊙ - EXIST. SURFACE LIGHT TO BE REMOVE
- ⊕ - NEW RECESSED LIT
- - NEW CABLE
- ⊗ - EXISTING WALL MOUNT FIRE SUPPRESSION HEAD
- ⊗ - CEILING MOUNTED # 5 ++ (EXISTING)

BALCONY

REMOVE EXIST. SURFACE MOUNTED JUNCTION BOX & RACEWAY

REMOVE (2) EX. SURFACE LIGHTS (7) MINI-RECESSED LIGHTS-INSTALLED

EXIST. CONCRETE CLG. 1/2" GYPSUM BOARD ON 2 1/2" STEEL STUDS AT 16" o/c 2 1/2" FIBERGLASS INSULATION

EXIST. CONCRETE FLOOR

BR. 2

MASTER BR.

(2) ELECTRIC FIREPLACE SIMULATED LIGHT/FIAME

200 AMP SERVICE PANEL

3 NEW MICRO WAVE CIRCUIT

SMOKE DETECTOR

REMOVE GAS

MASTER SITTING

CORRIDOR

BACK BAY TOWER - APT. 1202

12" WIDE COVE - FLUORESCENT LIGHTS