

December 7, 2010

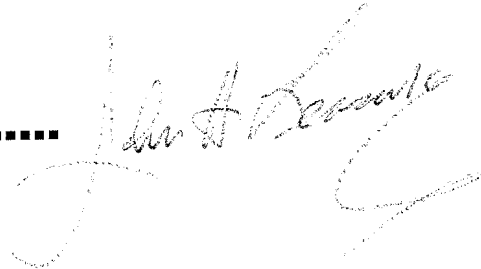
To: City of Portland, Maine

**Re: Addition to "Bubba's Sulky Lounge"
Corner of Portland & Mechanic St.
Portland, Maine.**

Lannie..

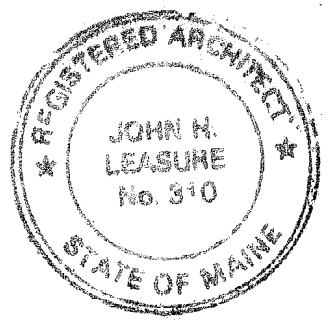
**Enclosed please find electronic
copies of plans already delivered to you.
If there is any other question, please call.**

John h.....



JOHN H. LEASURE ARCHITECT, INC.

SIX Q STREET
SOUTH PORTLAND, MAINE 04106
207-767-4600



#5-12' OC VERT
EMBED 6" INTO
EXIST. FDN

#4 @ 16" OC
#5 @ 12" OC HORIZ

#5 @ 12" OC
#5 @ 12" OC
CORNER
T&B

(TYP. FDN LAYOUT - NO SCALE)

AD2

2 - #5 CONT.

#5 HORIZ @ 12" OC.

SUL. #4 VERT. @ 16" OC W/ STD HORIZ.

3 #5 CONT 3" FROM BTM.

NEW STORAGE ADDITION (300 SF)

10'-0"

A

COATS

FUNCTION ROOM

B

STORAGE

30'-0"

TIE 6" DRAIN INTO EXISTING

KIT.

DISPLAY

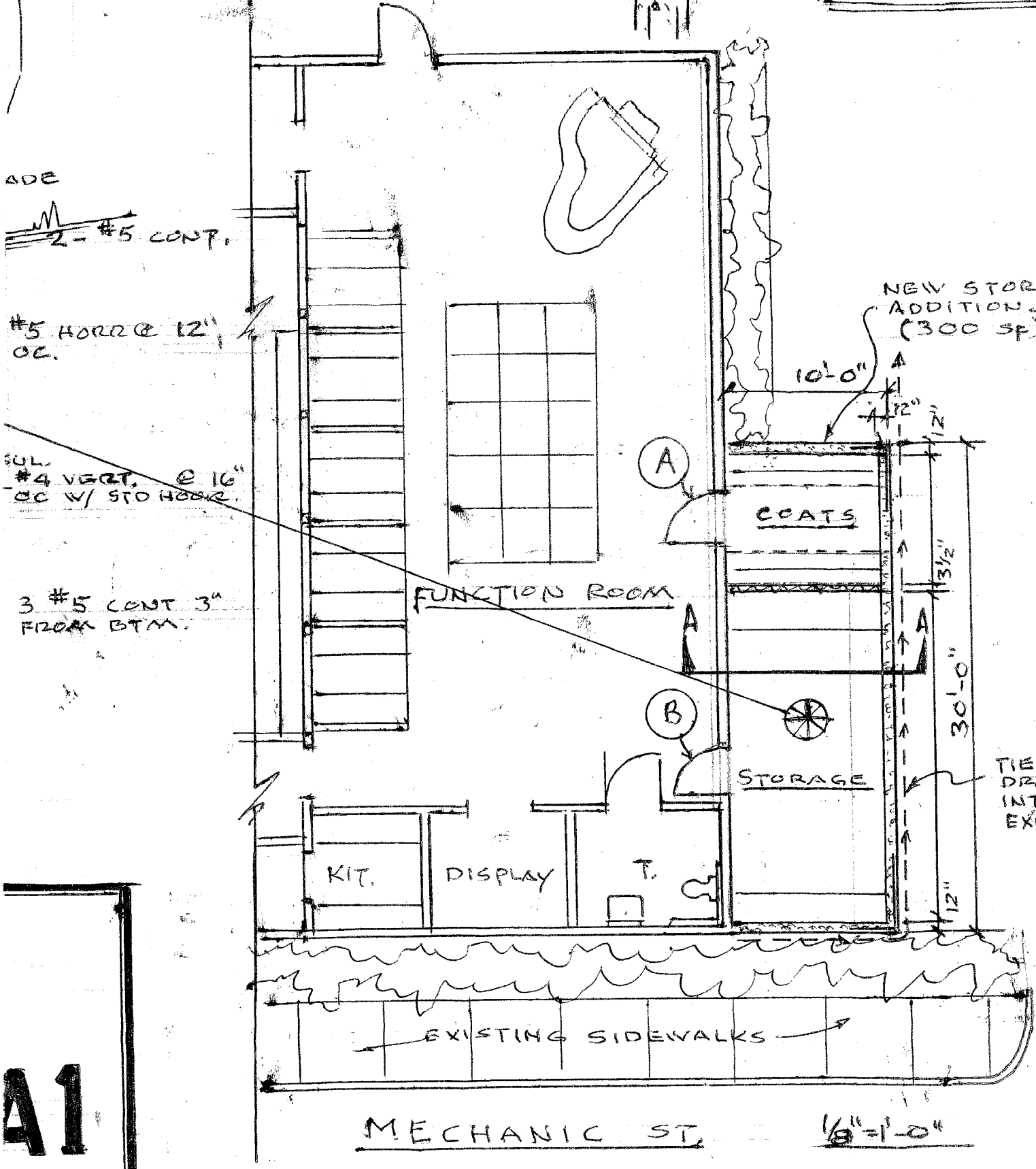
T.

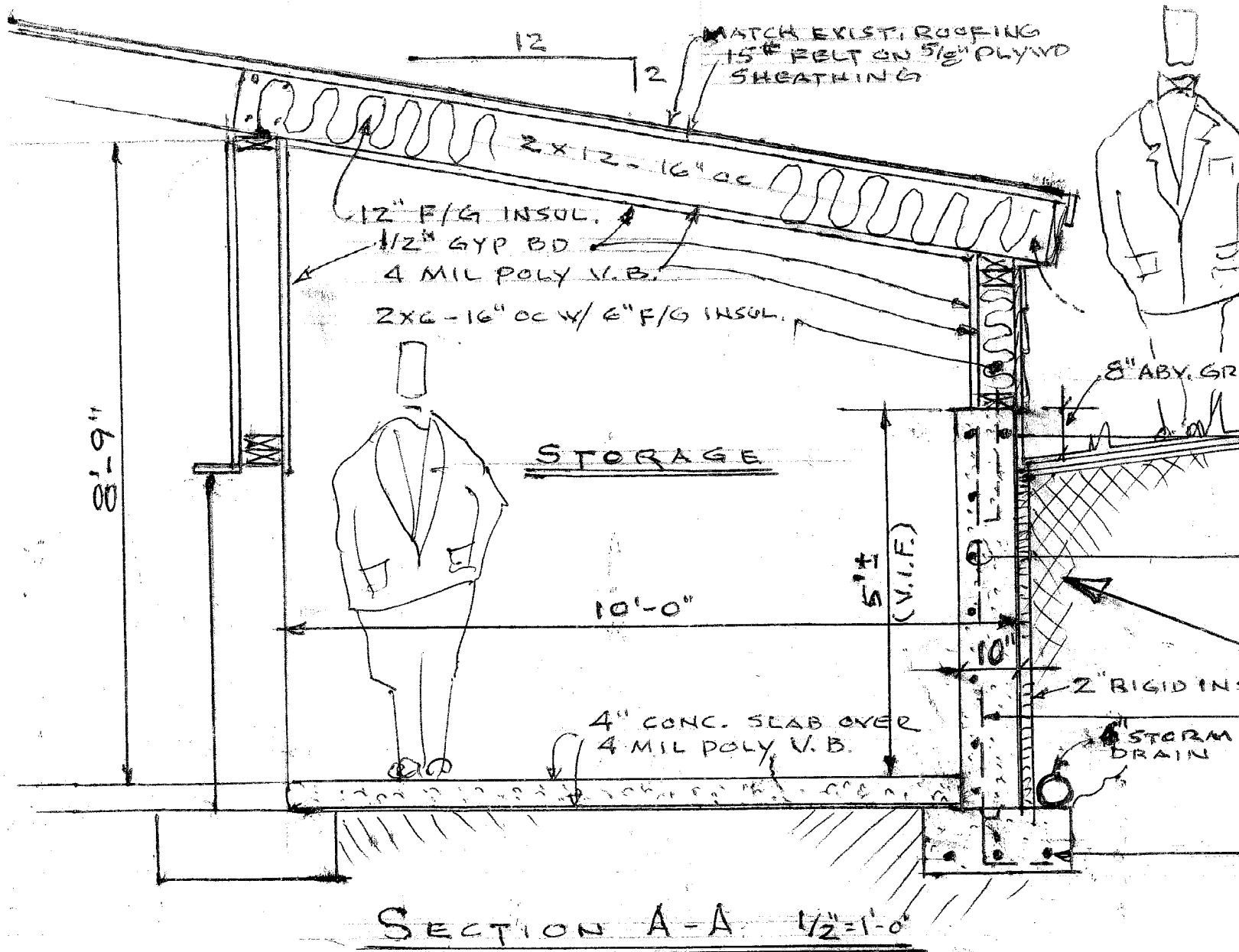
EXISTING SIDEWALKS

MECHANIC ST.

1/8" = 1'-0"

A1

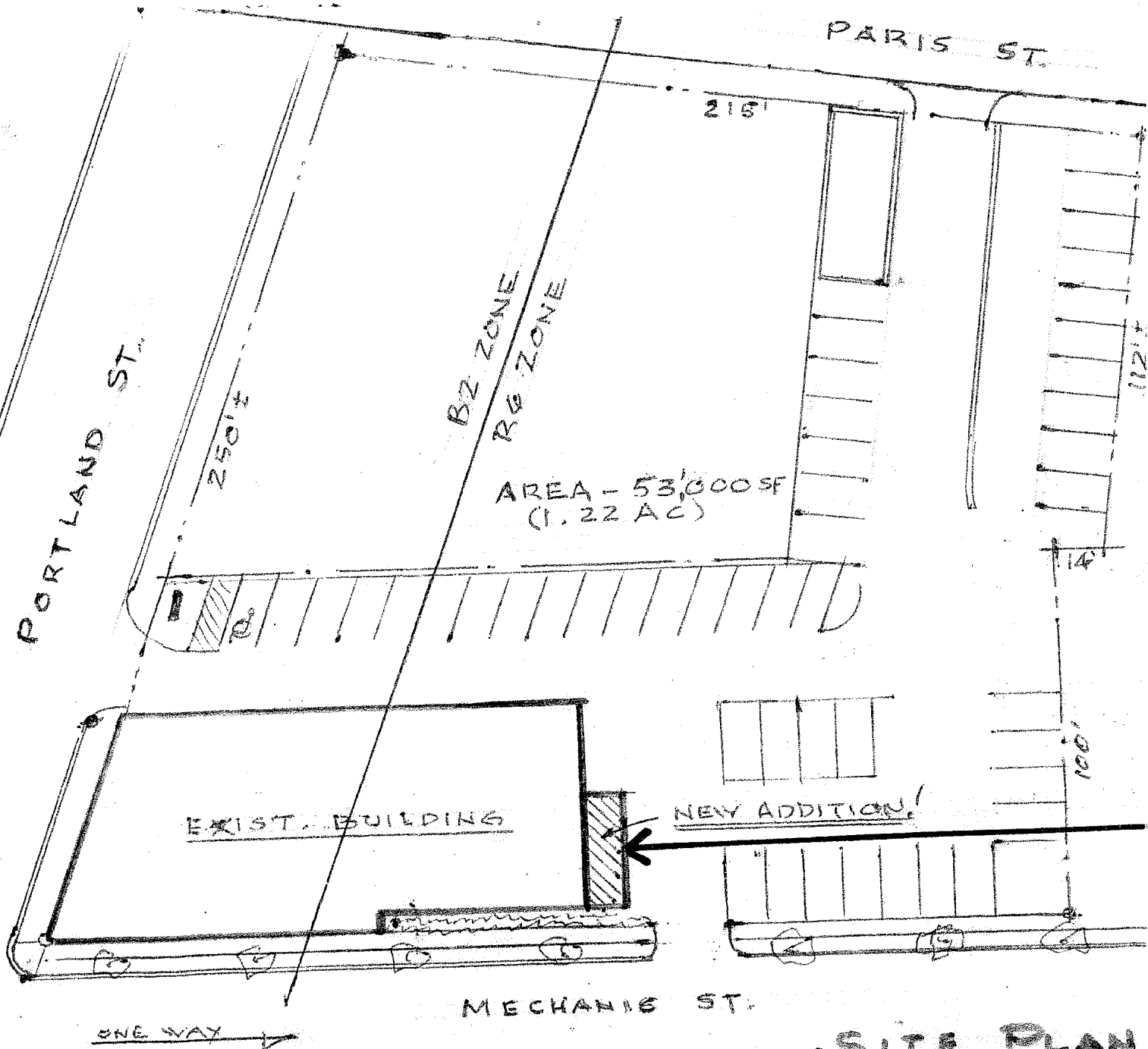




- (A) 3/0 x 6/8 x 1 3/4" S/C LUAN W/ LEVER HANDLE & KEYS LOCK
- (B) 3/0 x 6/8 x 1 3/4" S/C LUAN W/ 1/2" DR SHELF & LEVER HANDLES

STORAGE ADDITION TO BUBBA'S SULKY LOUNGE
MECHANIC ST ~ PORTLAND, MAINE

JOHN H. LEASURE ARCH'T, INC DEC 10, 2010
SIX Q ST / 50. PORTLAND, MAINE (799 6570)



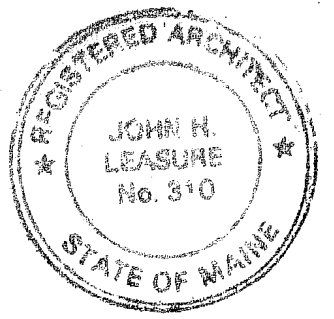
.SITE PLAN

STORAGE ADDITION TO BUBBA'S SULKY LOUNGE

MECHANIC ST ~ PORTLAND, MAINE

JOHN H. LEASURE ARCHT, INC
SIX Q ST / SO. PORTLAND, MAINE

DEC 10, 2010
(799 6570)



5-12" OC VERT.
EMBED 6" INTO
EXIST. FDN

#4 @ 16" OC
#5 @ 12" OC HORIZ.

#5 @ 12" OC
#5 @ 12" OC
CORNER
T & B

(TYP. FDN LAYOUT - NO SCALE)

CONT.

@ 12"

@ 16"
O HORIZ.

INT 3"
FM.

NEW STORAGE
ADDITION
(300 SF)

10'-0"

(A)

COATS

FUNCTION ROOM

(B)

STORAGE

KIT.

DISPLAY

TIE 6"
DRAIN
INTO
EXISTING

EXISTING SIDEWALKS

MECHANIC ST.

1/8" = 1'-0"

A2