

3/25" ASP SHINGLES ON
5/8" Plyw/Deck.
APA RATED.

ALUM PACIA
1/2" VERTICAN 95
2x4 BRACKS, BOTH SIDES
GANT VENT.
BAYWIDE 2X4 HANG.

2x4-12" O.C. W/
1/2" RAYBOD EMERALD
AIR BARRIER.

2x4-12" O.C. W/
1/2" RAYBOD EMERALD
AIR BARRIER.

2x4-12" O.C. W/
1/2" RAYBOD EMERALD
AIR BARRIER.

2x4-12" O.C. W/
1/2" RAYBOD EMERALD
AIR BARRIER.

2x4-12" O.C. W/
1/2" RAYBOD EMERALD
AIR BARRIER.

2x4-12" O.C. W/
1/2" RAYBOD EMERALD
AIR BARRIER.

2x4-12" O.C. W/
1/2" RAYBOD EMERALD
AIR BARRIER.

2x4-12" O.C. W/
1/2" RAYBOD EMERALD
AIR BARRIER.

2x4-12" O.C. W/
1/2" RAYBOD EMERALD
AIR BARRIER.

2x4-12" O.C. W/
1/2" RAYBOD EMERALD
AIR BARRIER.

2x4-12" O.C. W/
1/2" RAYBOD EMERALD
AIR BARRIER.

2x4-12" O.C. W/
1/2" RAYBOD EMERALD
AIR BARRIER.

2x4-12" O.C. W/
1/2" RAYBOD EMERALD
AIR BARRIER.

2x4-12" O.C. W/
1/2" RAYBOD EMERALD
AIR BARRIER.

2x4-12" O.C. W/
1/2" RAYBOD EMERALD
AIR BARRIER.

2x4-12" O.C. W/
1/2" RAYBOD EMERALD
AIR BARRIER.

2x4-12" O.C. W/
1/2" RAYBOD EMERALD
AIR BARRIER.

2x4-12" O.C. W/
1/2" RAYBOD EMERALD
AIR BARRIER.

2x4-12" O.C. W/
1/2" RAYBOD EMERALD
AIR BARRIER.

2x4-12" O.C. W/
1/2" RAYBOD EMERALD
AIR BARRIER.

2x4-12" O.C. W/
1/2" RAYBOD EMERALD
AIR BARRIER.

2x4-12" O.C. W/
1/2" RAYBOD EMERALD
AIR BARRIER.

2x4-12" O.C. W/
1/2" RAYBOD EMERALD
AIR BARRIER.

2x4-12" O.C. W/
1/2" RAYBOD EMERALD
AIR BARRIER.

2x4-12" O.C. W/
1/2" RAYBOD EMERALD
AIR BARRIER.

2x4-12" O.C. W/
1/2" RAYBOD EMERALD
AIR BARRIER.

2x4-12" O.C. W/
1/2" RAYBOD EMERALD
AIR BARRIER.

2x4-12" O.C. W/
1/2" RAYBOD EMERALD
AIR BARRIER.

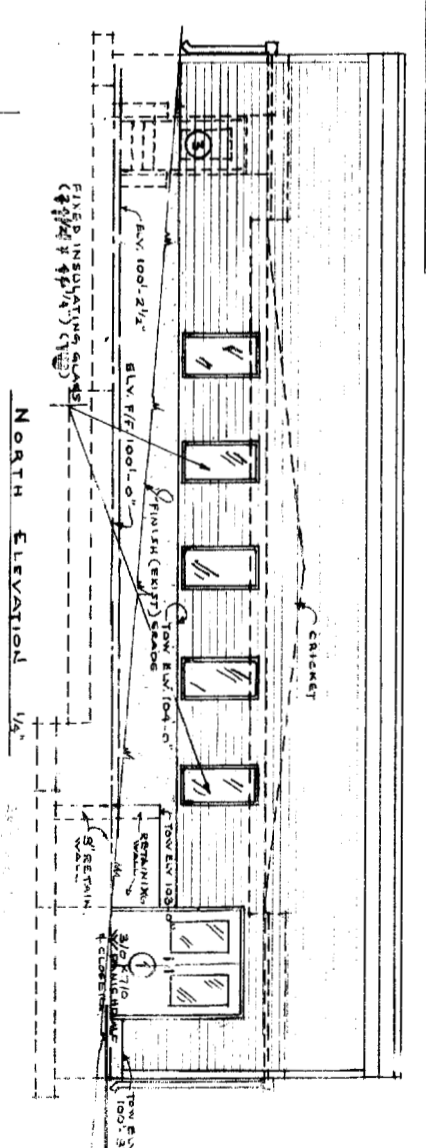
2x4-12" O.C. W/
1/2" RAYBOD EMERALD
AIR BARRIER.

2x4-12" O.C. W/
1/2" RAYBOD EMERALD
AIR BARRIER.

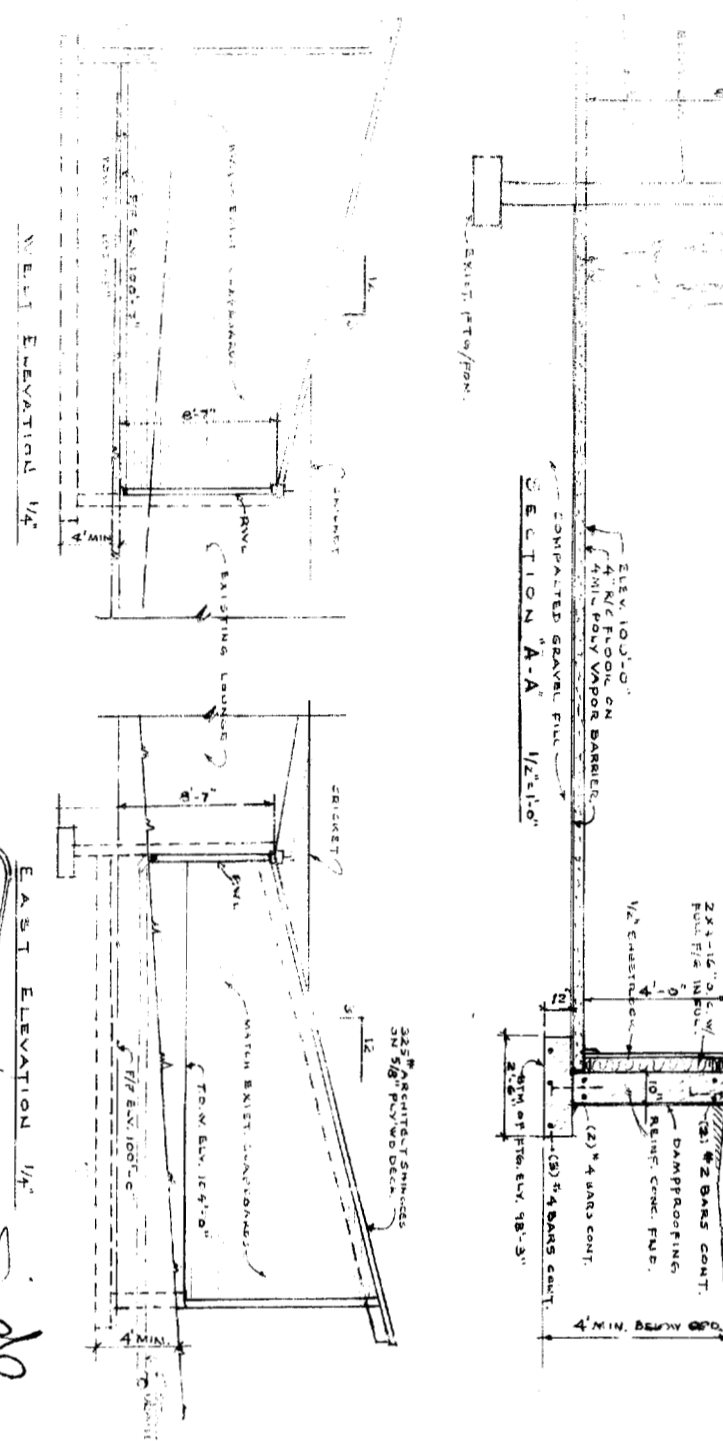
2x4-12" O.C. W/
1/2" RAYBOD EMERALD
AIR BARRIER.

2x4-12" O.C. W/
1/2" RAYBOD EMERALD
AIR BARRIER.

2x4-12" O.C. W/
1/2" RAYBOD EMERALD
AIR BARRIER.

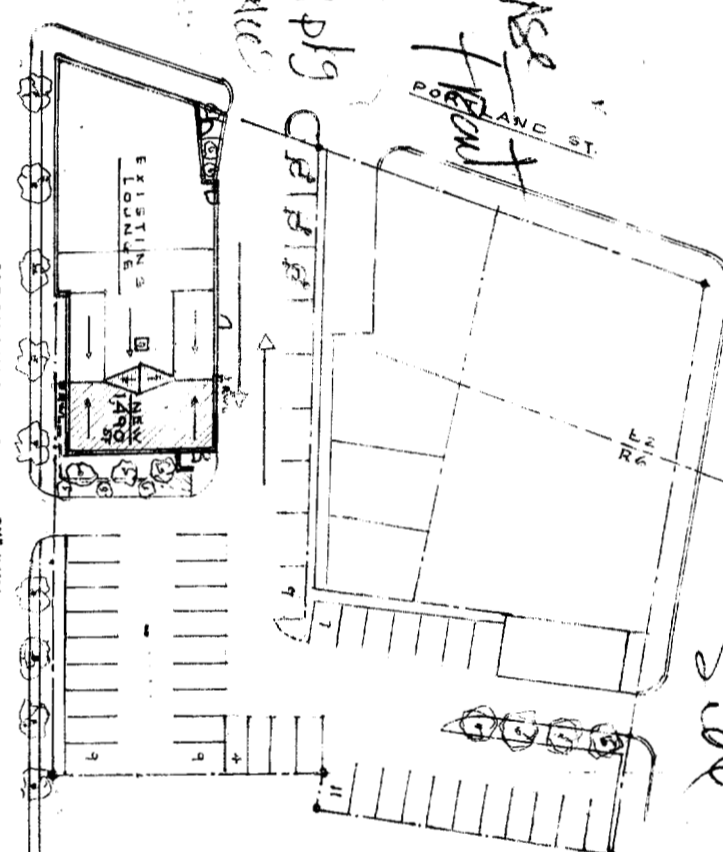


NORTH ELEVATION 1/4"

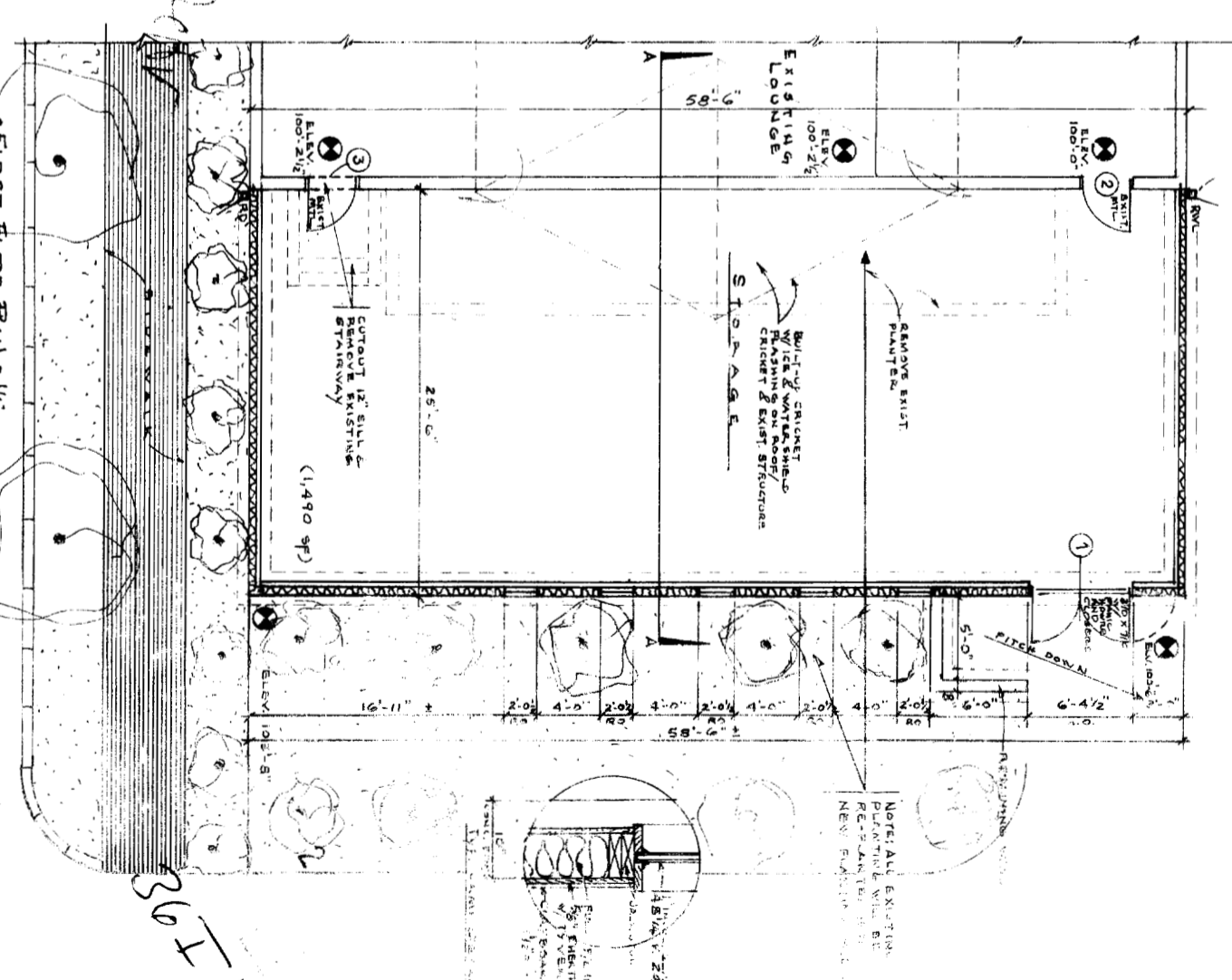


EAST ELEVATION 1/4"

New Arch for 'Cold Storage'
only
4890th - 155' 32.6' of 499 plg
33 pkgs
109'



SITE PLAN 1"



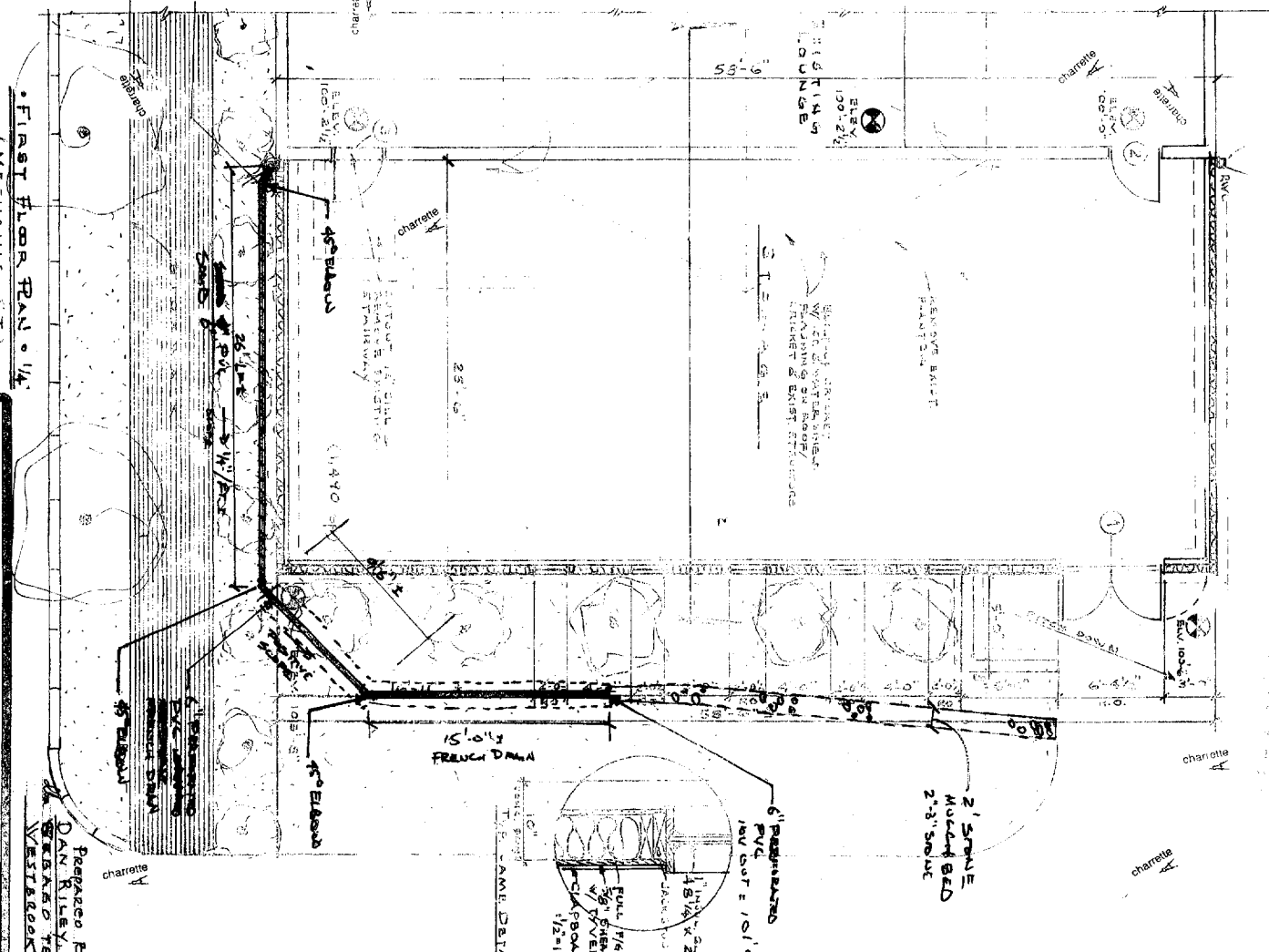
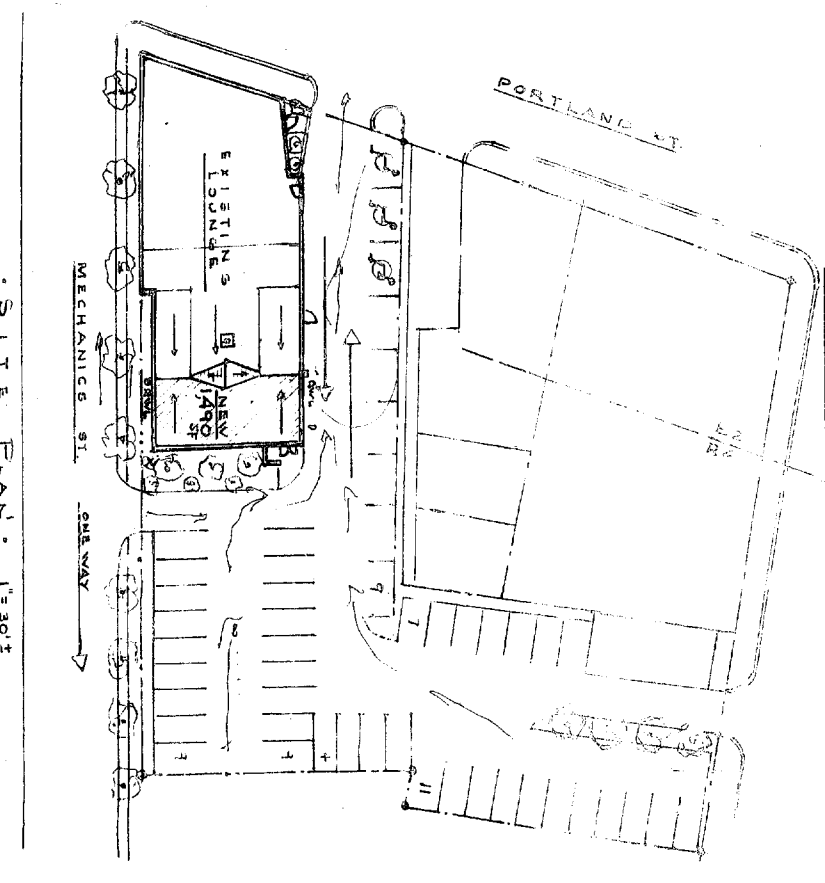
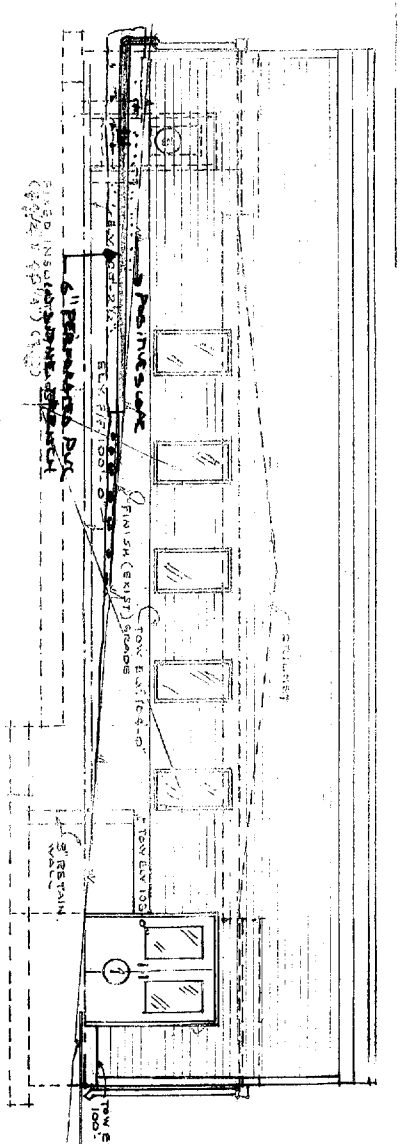
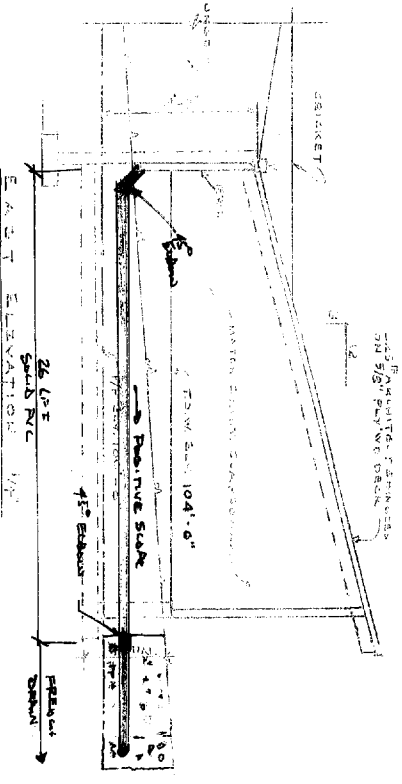
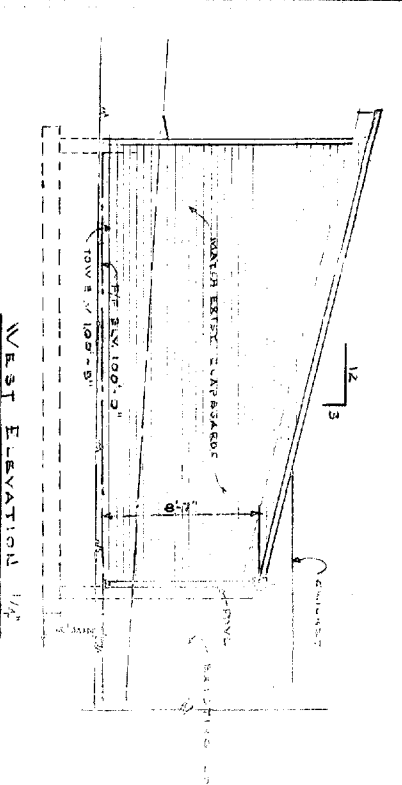
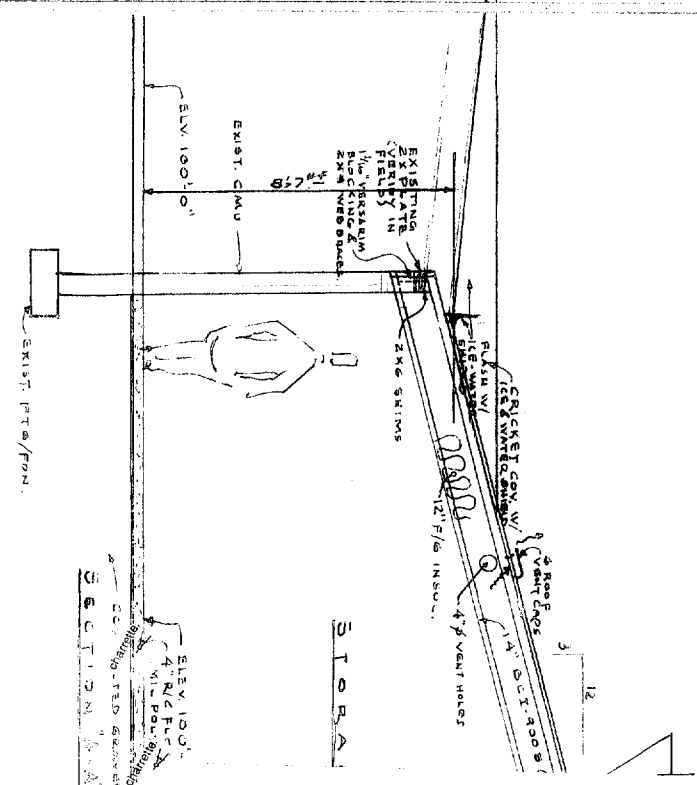
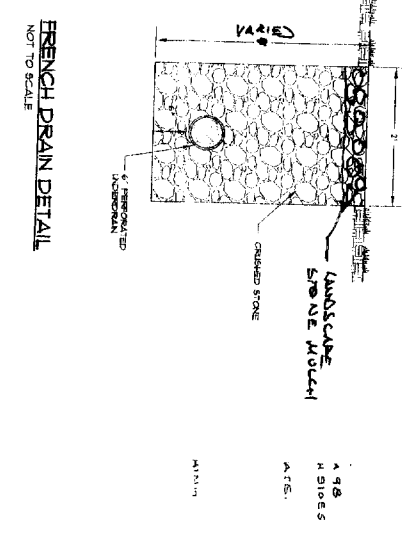
FIRST FLOOR PLAN 1/4"

NO.	DATE	STATUS

ADDITION TO
BUBBA'S SULKY LOUNGE
CORNER OF PORTLAND & MECHANIC ST
PORTLAND, MAINE

1-T 39

JOHN W. LEVINSKY
212 2705
2875 FOREST ST. PORTLAND, ME 04106



ADDITION TO
BUBBA'S SULKY LOUNGE
 CORNER OF PORTLAND & MECHANIC ST
 PORTLAND, MAINE
 SEPT. 2004

JOHN M. LEASURE ARCHITECTS, INC.
 SIX Q STREET
 SOUTH PORTLAND, MAINE 04106

767.4600

Prepared by:
 DAN RILEY, P.E.
 GEORGE TECHNIS,
 WESTBROOK, ME
 OCT. 2004

Bulbs

REV	DATE	STATUS
