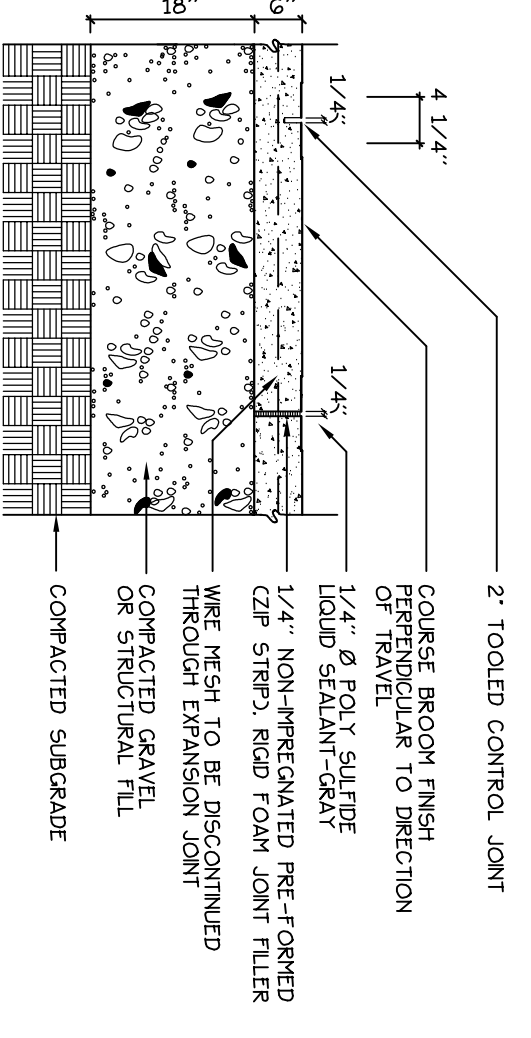
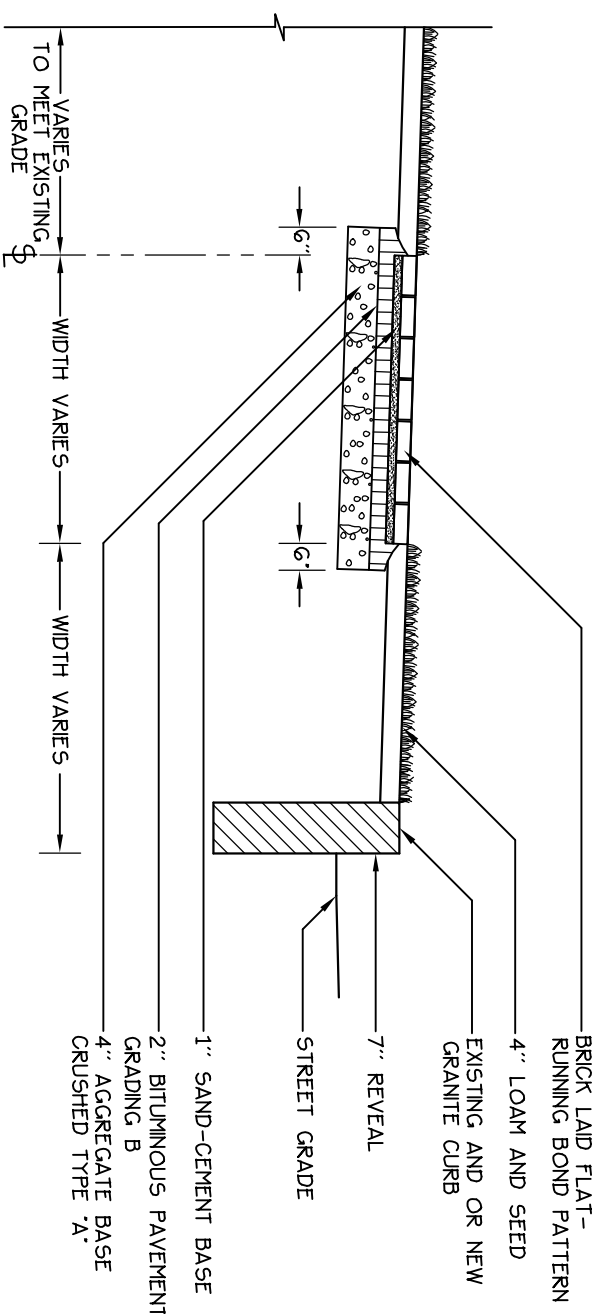


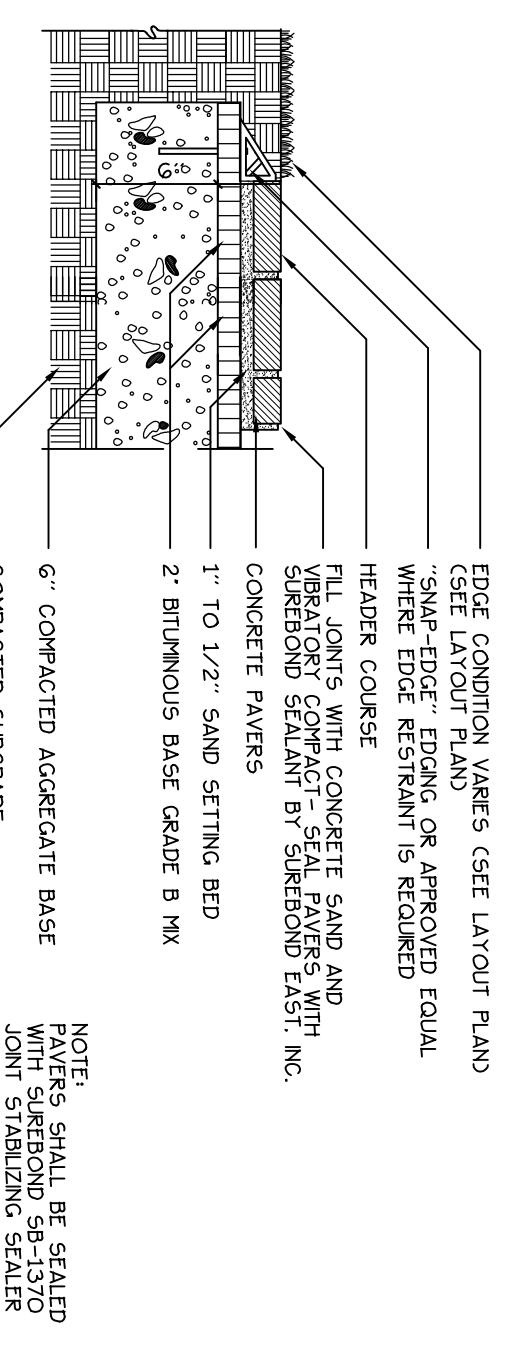
1 BITUMINOUS PAVEMENT - DRIVEWAY + PARKING
NOT TO SCALE



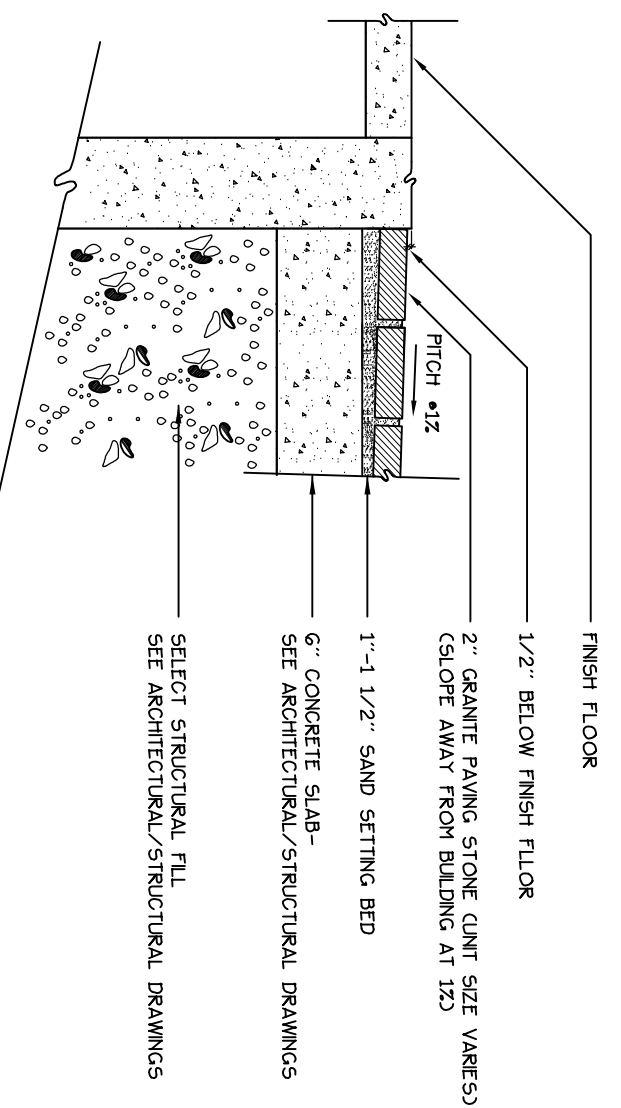
2 CONCRETE WALK
NOT TO SCALE



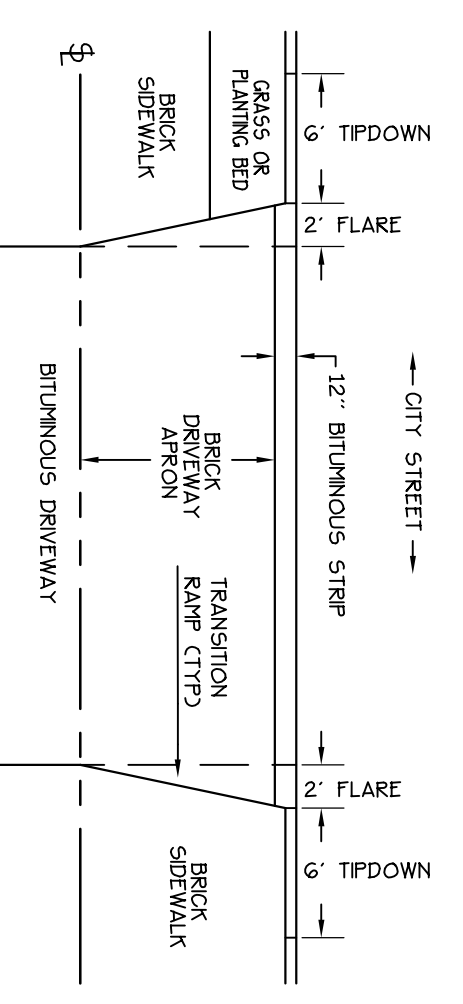
3 BRICK SIDEWALK WITH GRANITE CURB
NOT TO SCALE



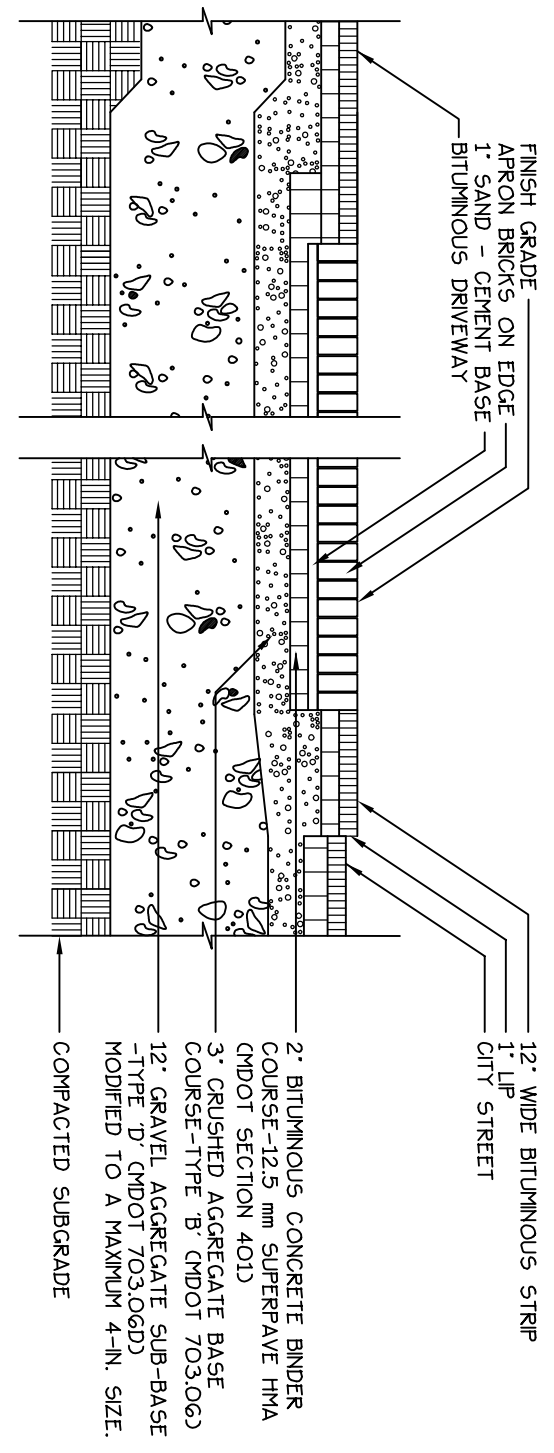
4 CONCRETE PAVERS
NOT TO SCALE



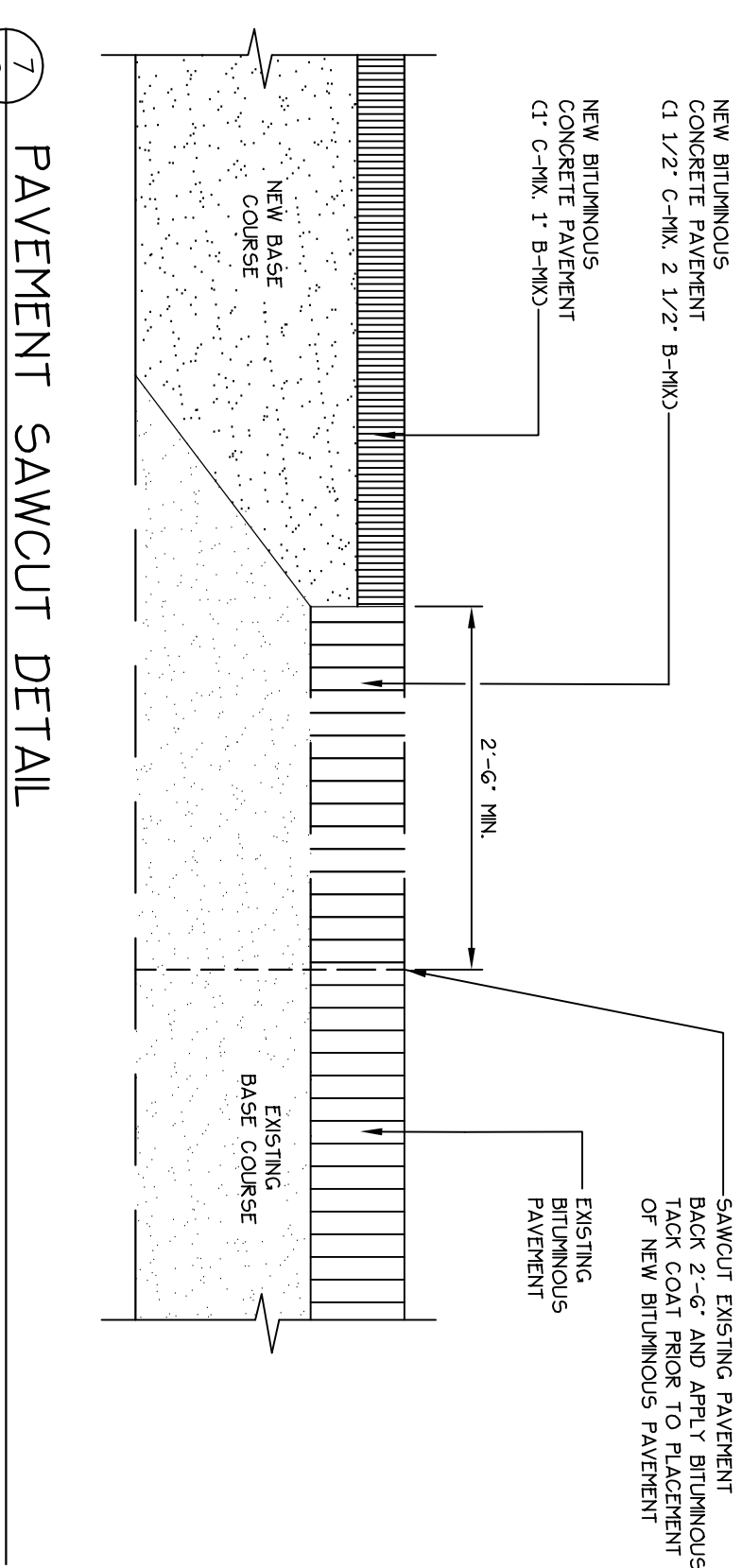
5 GRANITE PAVING STONE ON STRUCTURAL SLAB
NOT TO SCALE



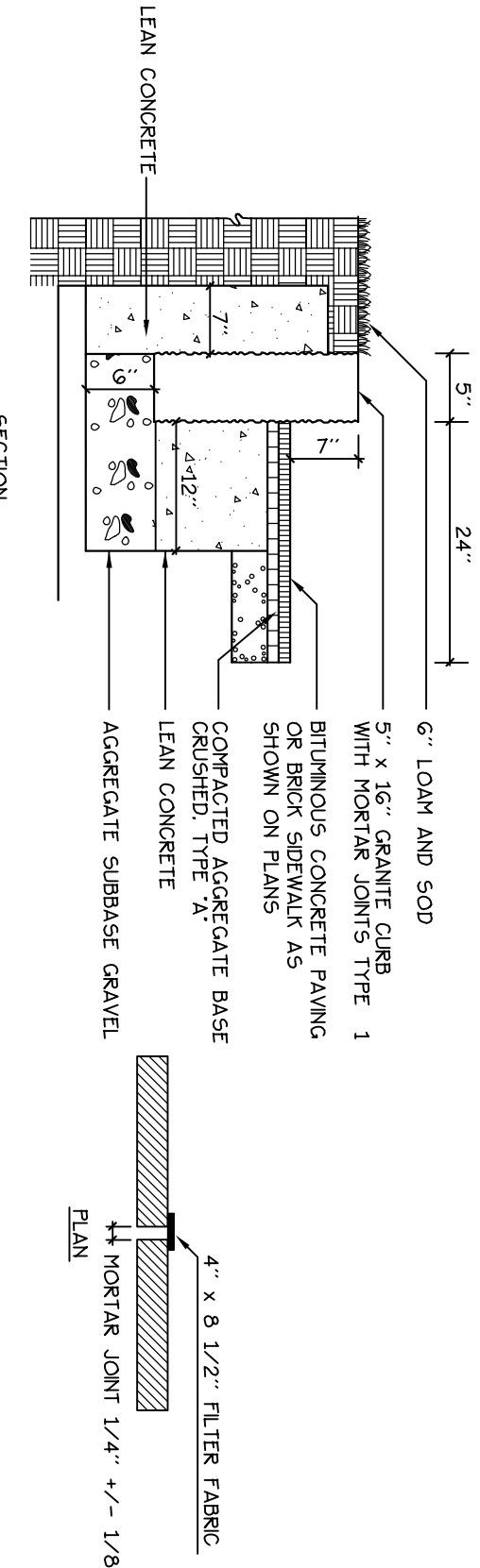
6 BRICK SIDEWALK + DRIVEWAY CONSTRUCTION
NOT TO SCALE



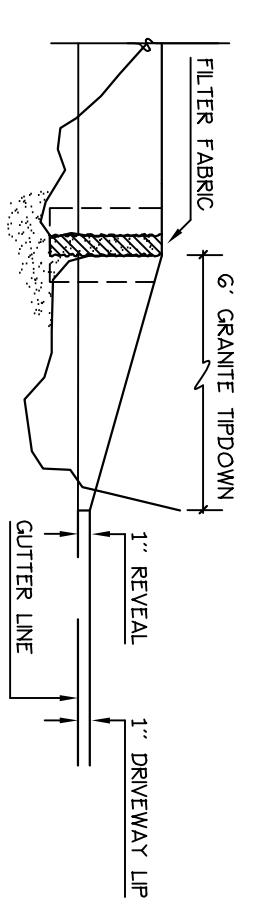
7 BRICK DRIVEWAY APRON
NOT TO SCALE



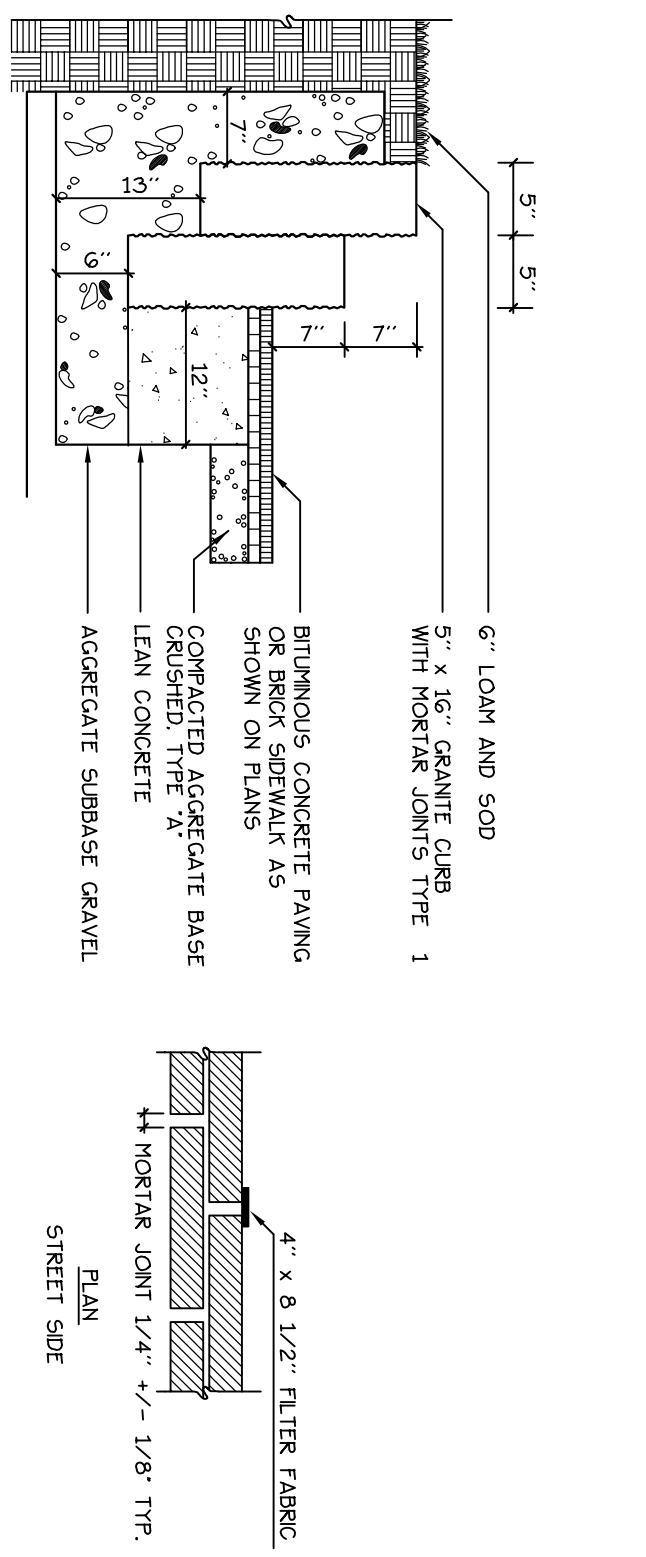
8 PAVEMENT SAWCUT DETAIL
NOT TO SCALE



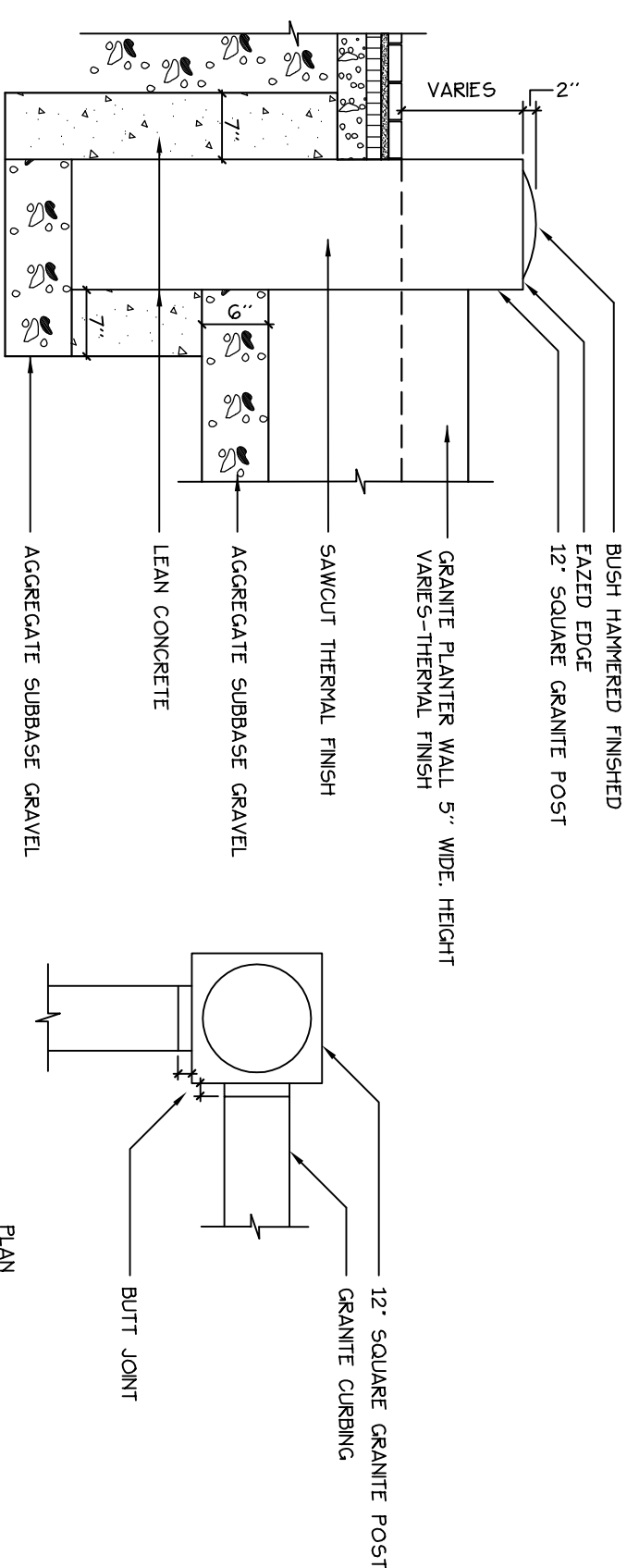
9 VERTICAL GRANITE CURB
NOT TO SCALE



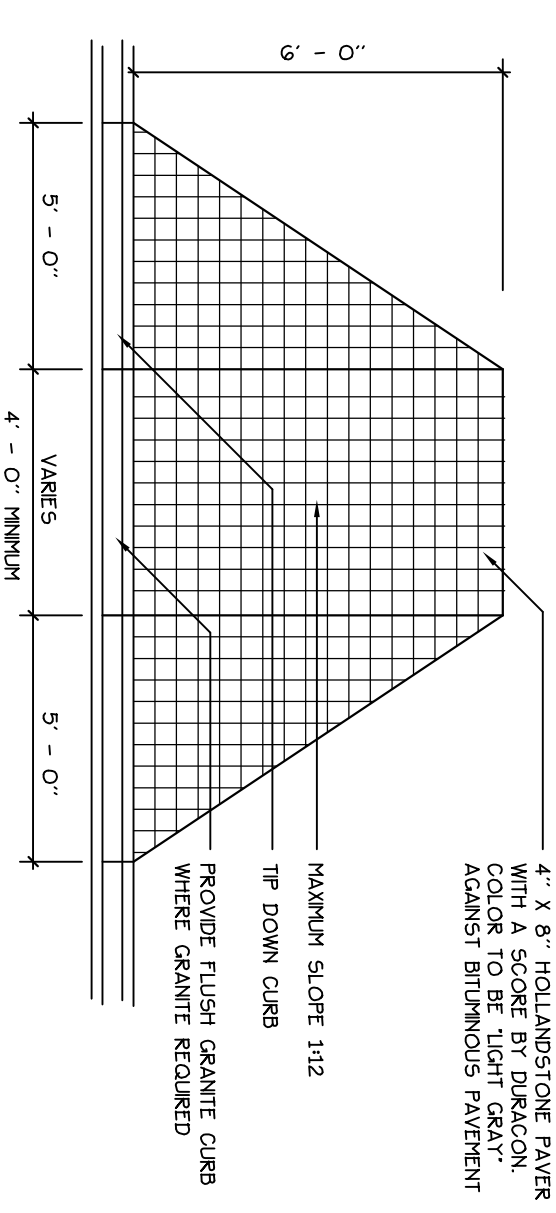
10 TIPDOWN CURB
NOT TO SCALE



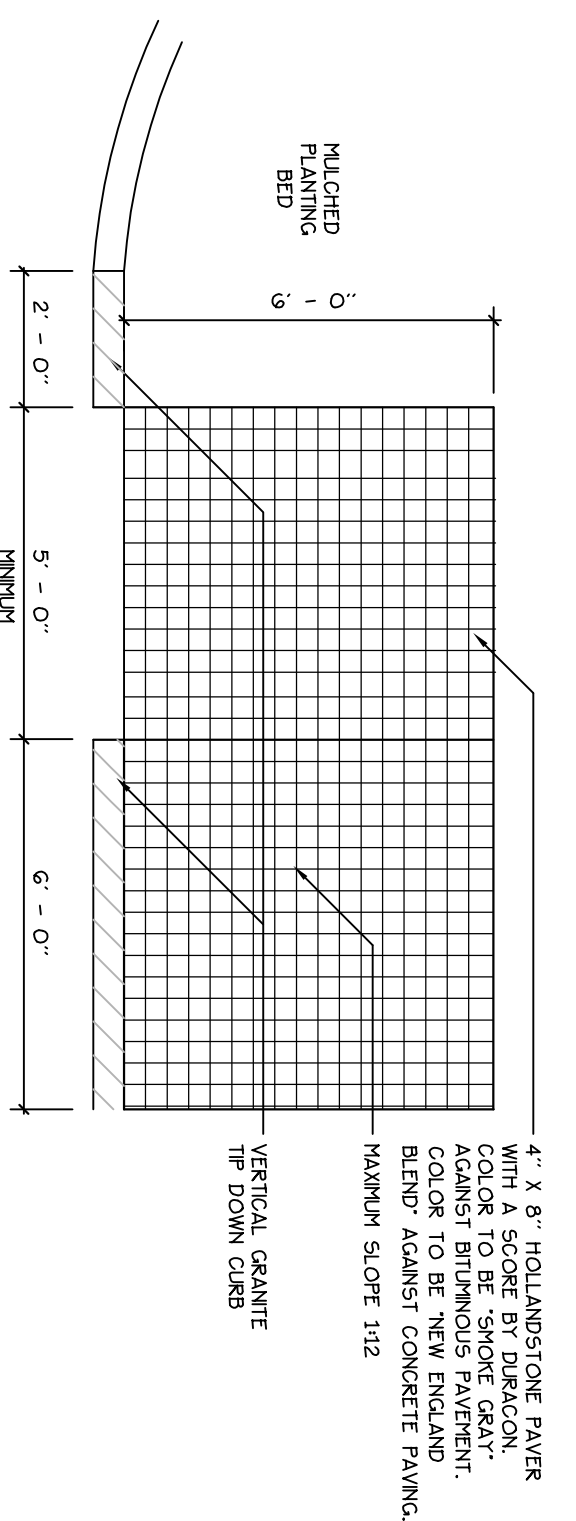
11 DOUBLE VERTICAL GRANITE CURB (ESPLANADE AREA)
NOT TO SCALE



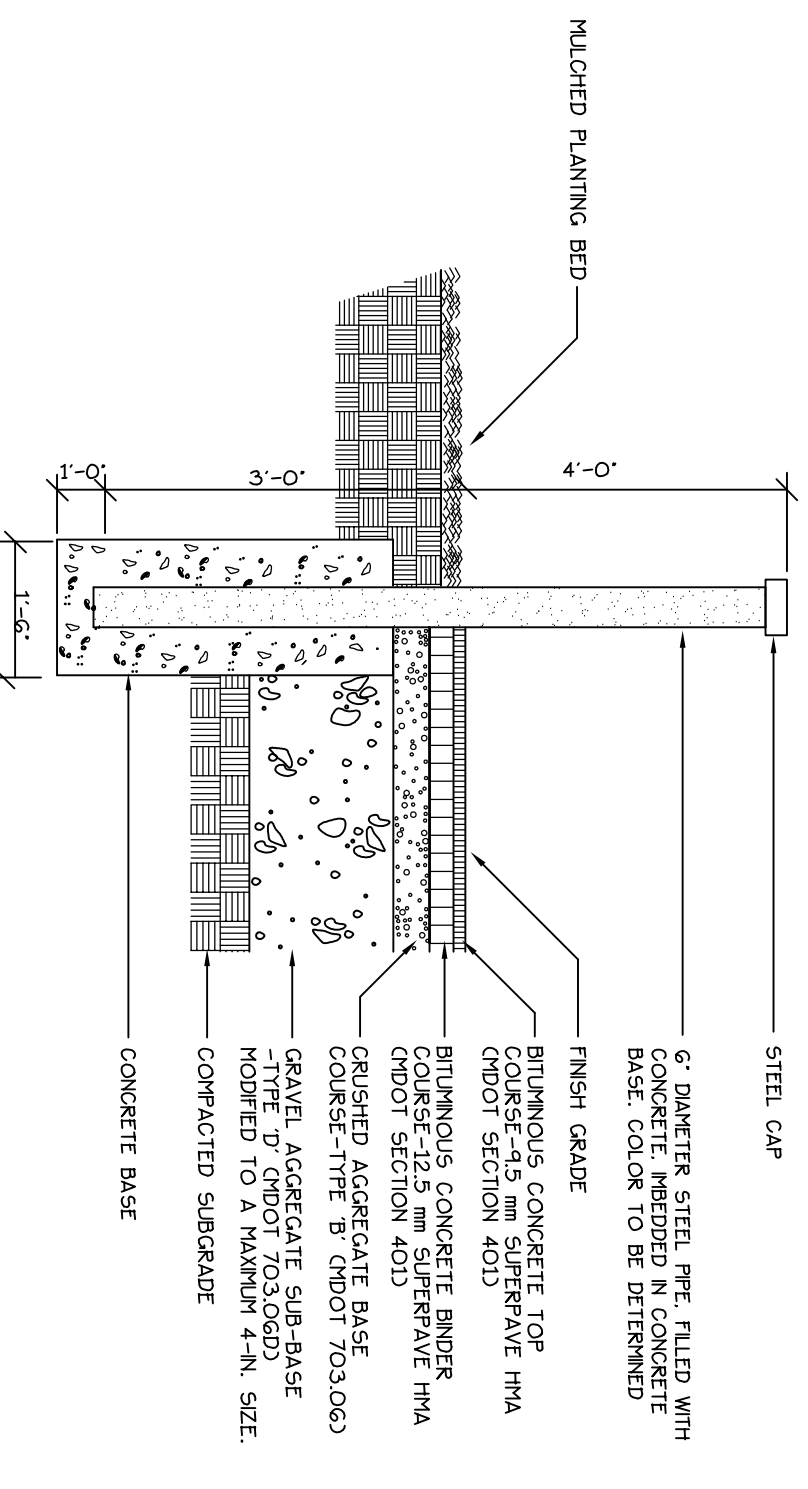
12 GRANITE POST AND PLANTER WALL DETAIL
NOT TO SCALE



13 HANDICAP RAMP - CONDITION VARIES
NOT TO SCALE



14 HANDICAP RAMP
NOT TO SCALE



15 BOLLARD DETAIL
NOT TO SCALE

Prepared For:
Owner/Applicant:
WATERVIEW DEVELOPMENT LLC
577 Congress Street, Suite 111
Portland, Maine 04101
Tel: (207) 773-9477

Prepared By:
MITCHELL & ASSOCIATES
The Staples School
70 Center Street
Portland, Maine 04101
Tel: (207) 774-4257

THE WATERVIEW AT BAYSIDE CONDOMINIUM
409 Cumberland Avenue Portland, Maine

Date: APRIL 29, 2005	Revisions:	Title: SITE DETAILS
Reproduction or reuse of this document without the expressed written consent of Mitchell & Associates is prohibited.		
Scale:	North:	Sheet No.: 6