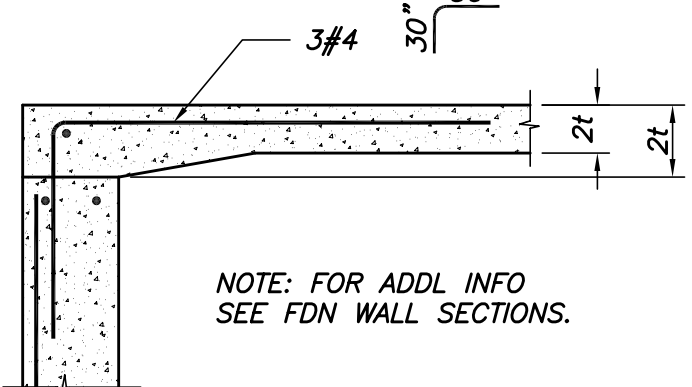
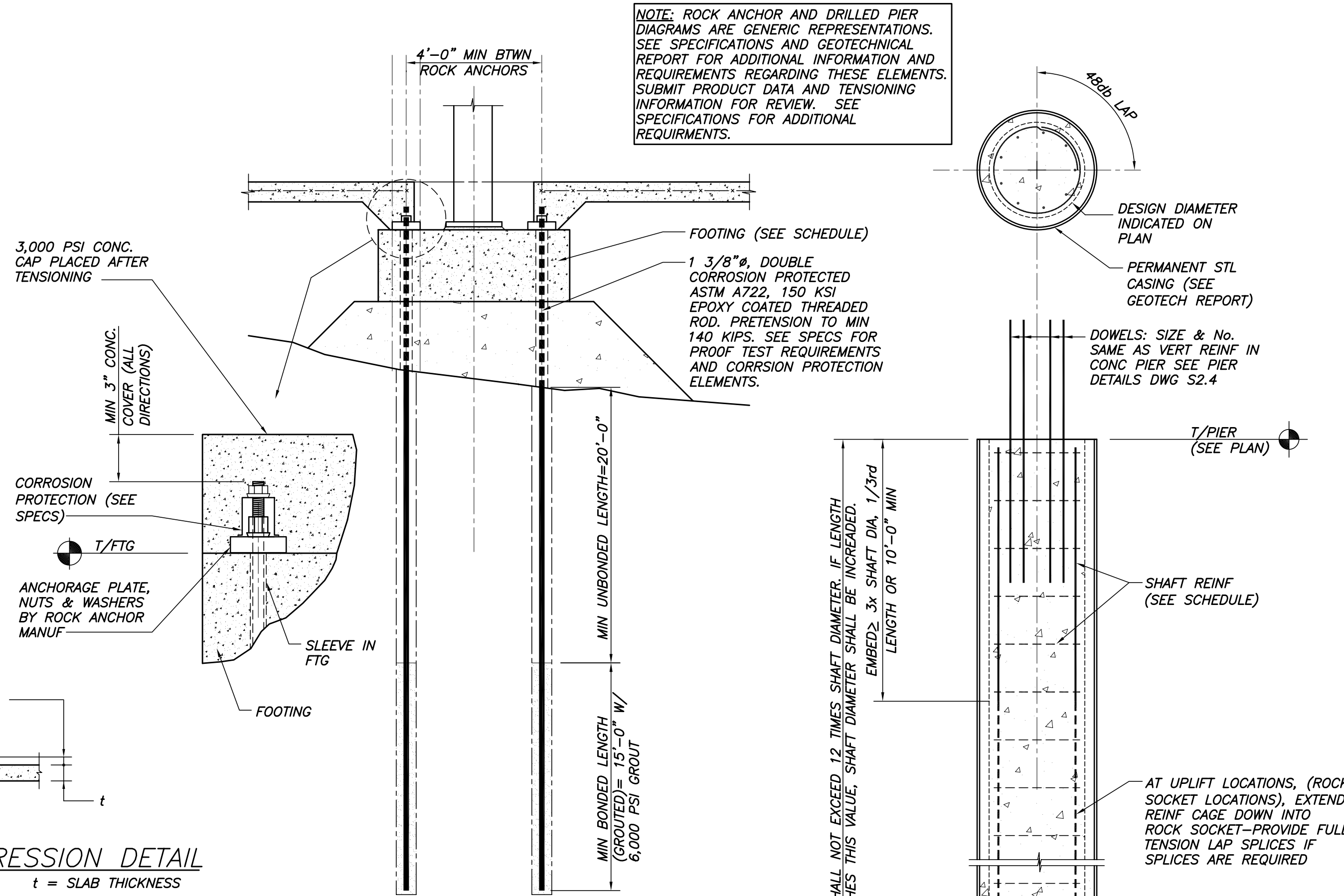


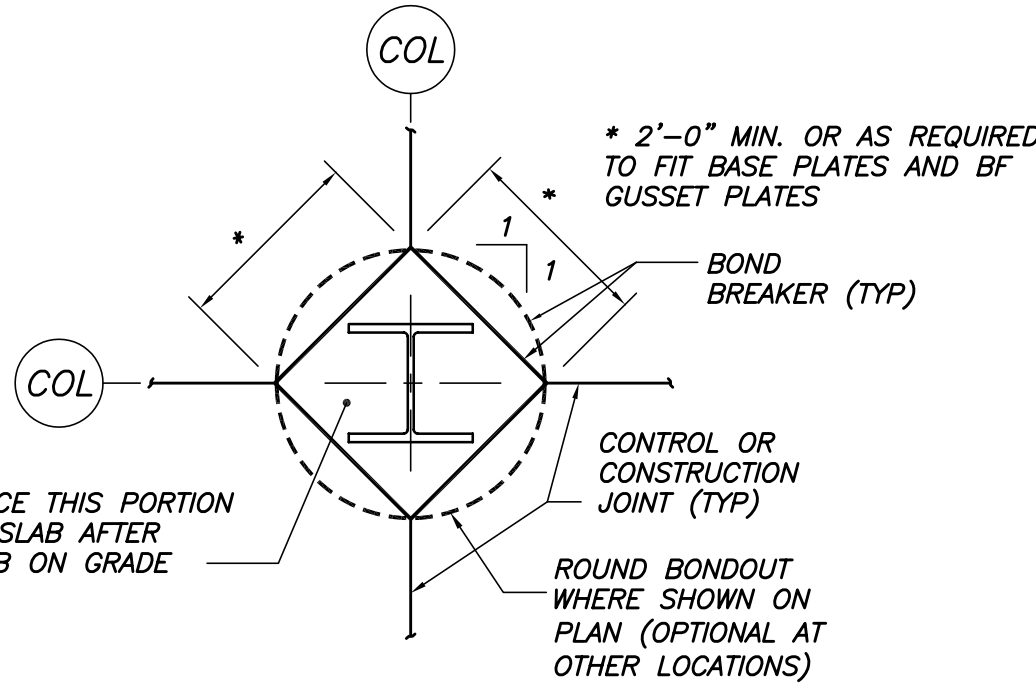
TYP INTERIOR FOOTING DETAIL U.N.O.
N.T.S.
t = SLAB THICKNESS



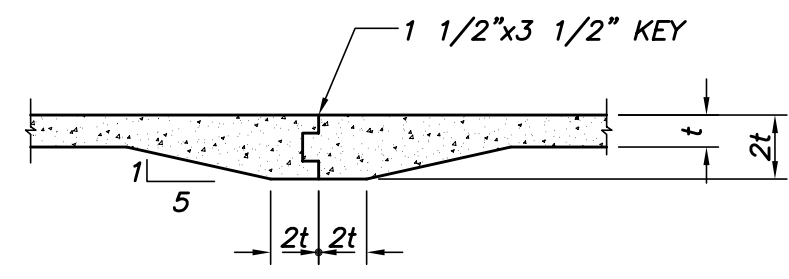
TYP SLAB DETAIL @ DOOR
N.T.S.
t = SLAB THICKNESS



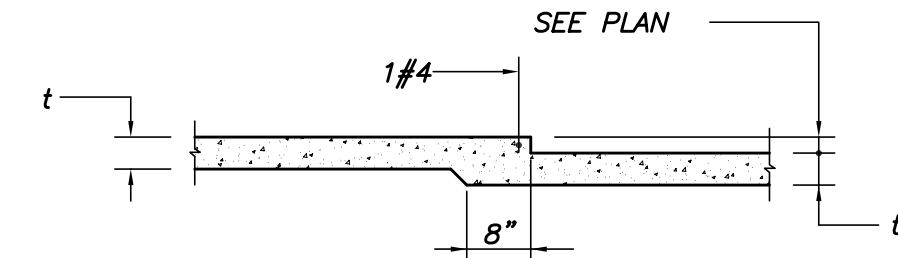
TYP ROCK ANCHOR DETAIL
N.T.S.



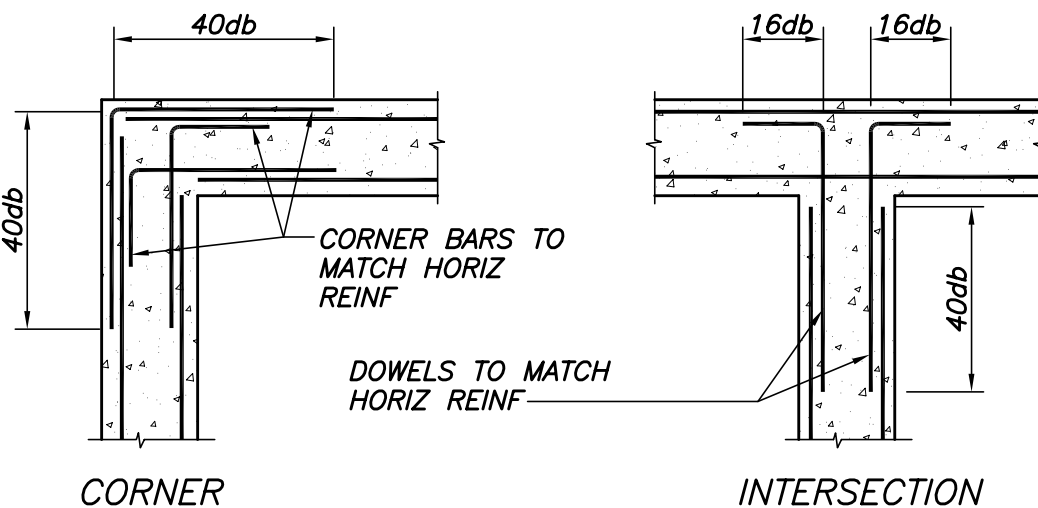
TYP SLAB ON GRADE DETAIL AT INTERIOR COLUMN
N.T.S.



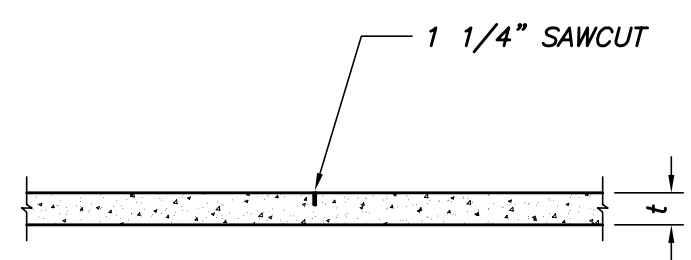
TYP SLAB ON GRADE CONSTRUCTION JOINT DETAIL
N.T.S.
t = SLAB THICKNESS



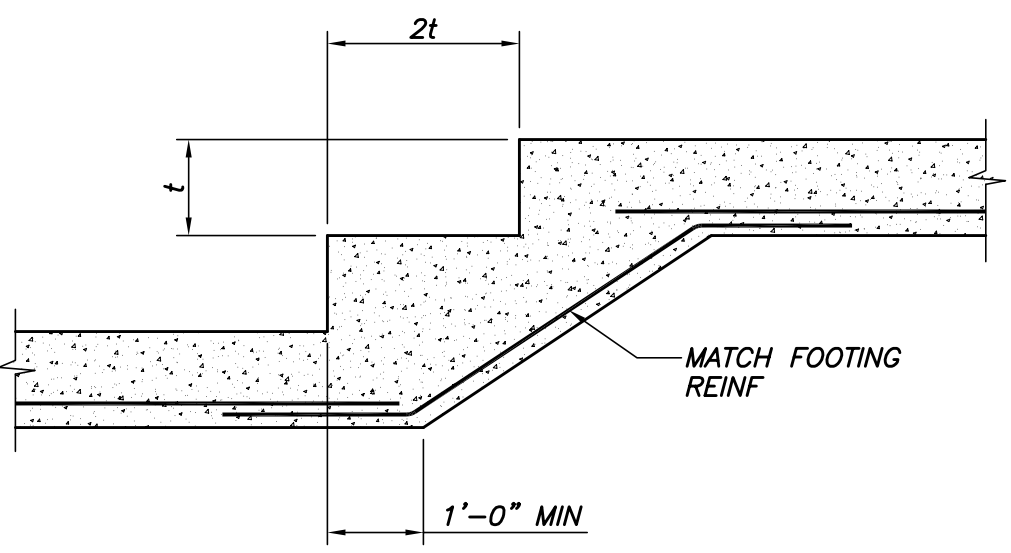
TYP SLAB ON GRADE DEPRESSION DETAIL
N.T.S.
t = SLAB THICKNESS



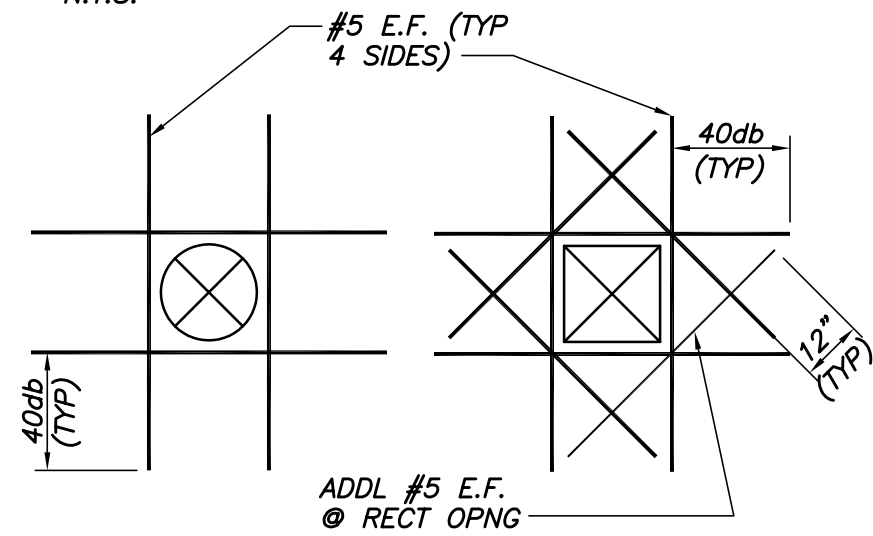
TYP WALL REINF DETAILS
N.T.S.



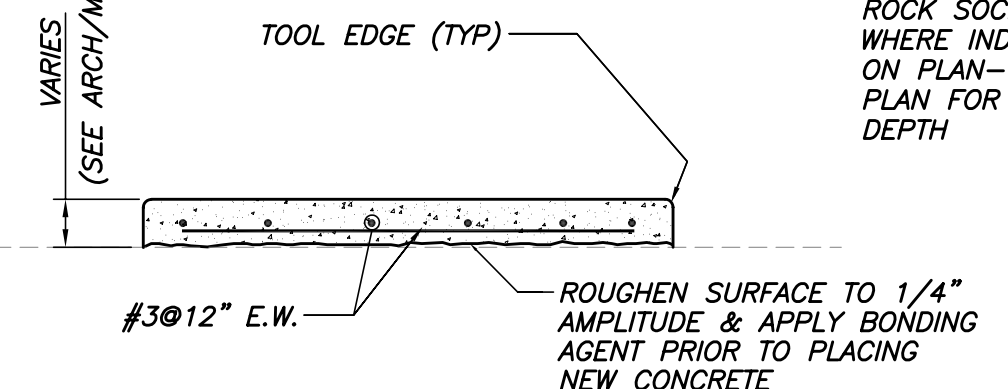
TYP SLAB ON GRADE CONTRACTION JOINT DETAIL
N.T.S.
t = SLAB THICKNESS



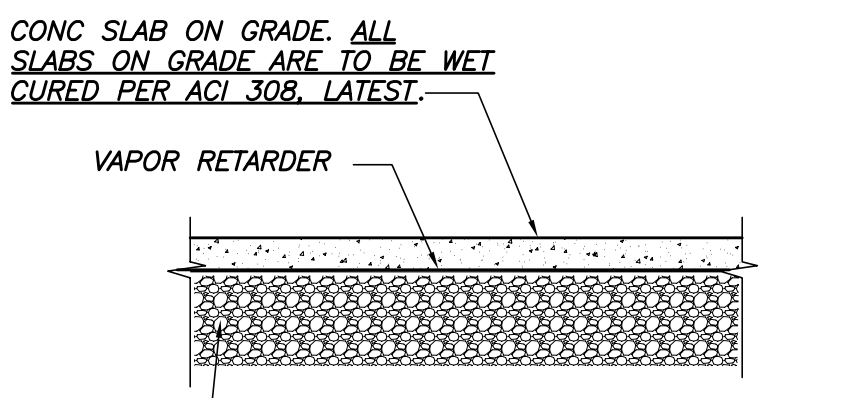
TYP STEP FOOTING DETAIL
N.T.S.
t = FOOTING THICKNESS



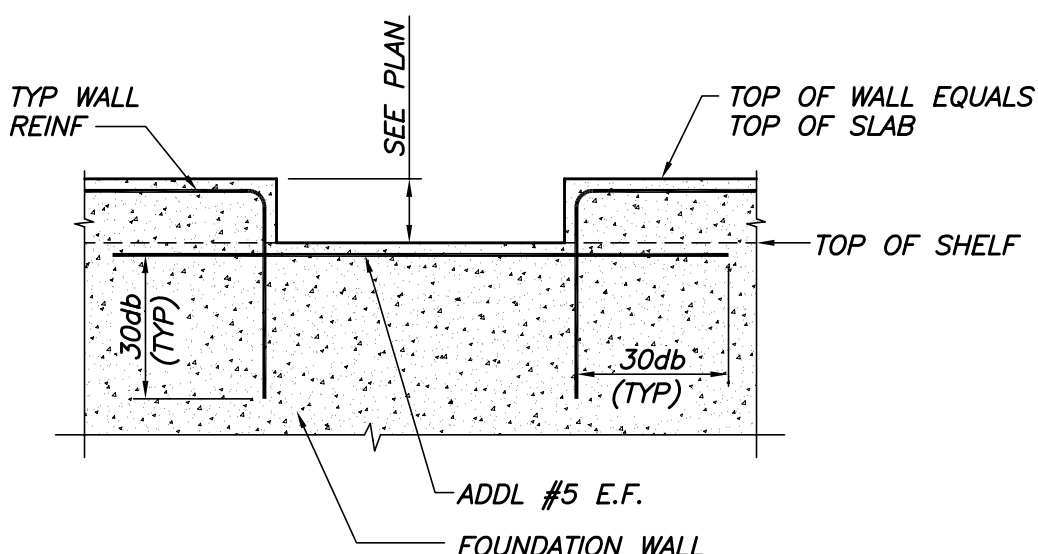
TYP OPENING IN WALL OR SLAB
N.T.S.



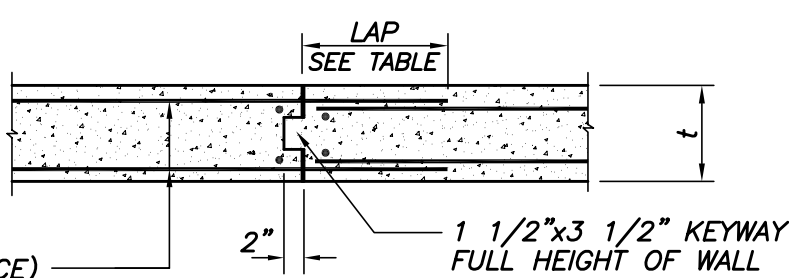
TYP EQUIPMENT HOUSEKEEPING PAD DETAIL
N.T.S.
t = SLAB THICKNESS



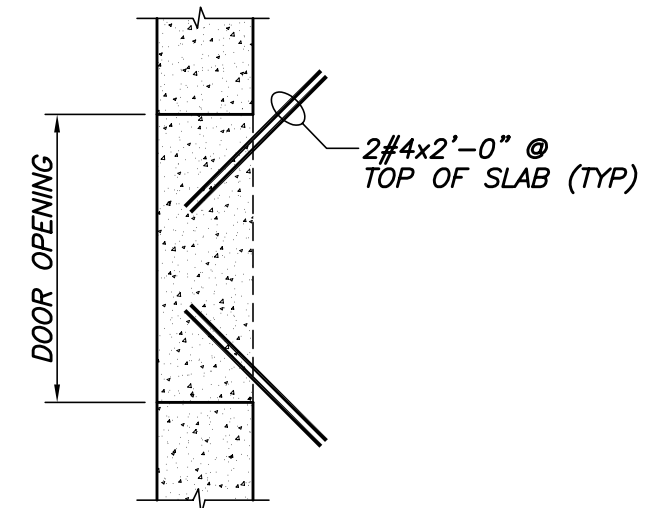
TYP SLAB DETAIL
N.T.S.



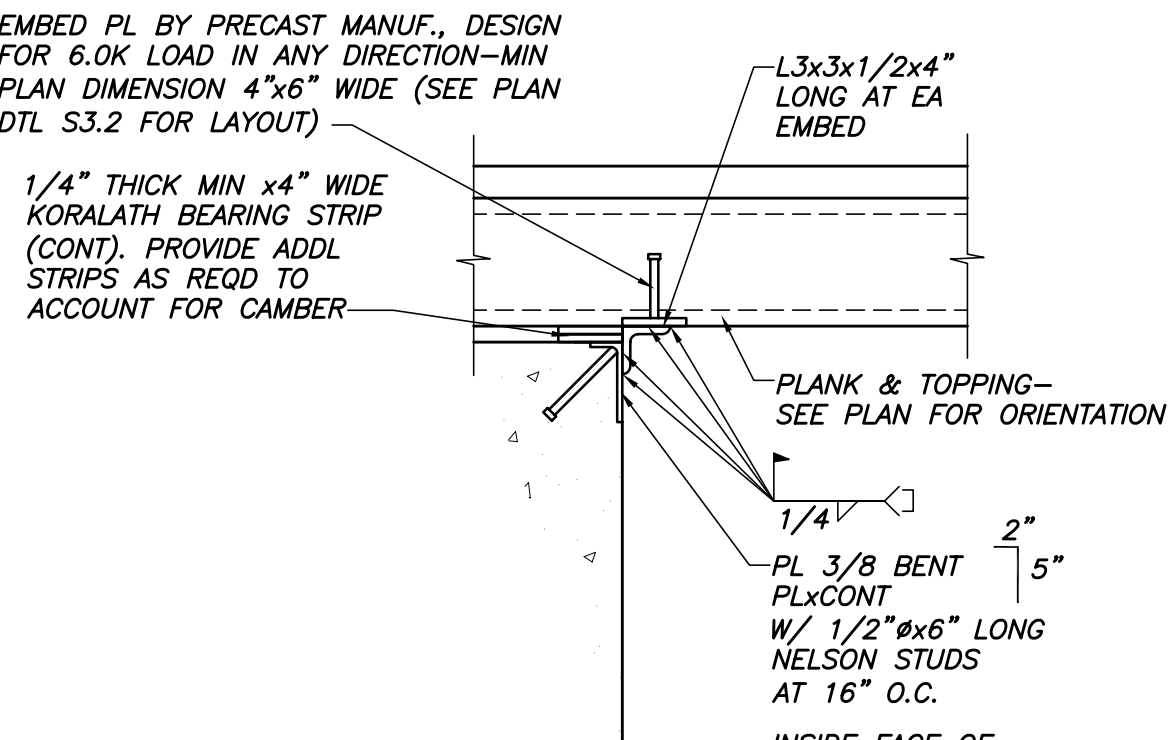
TYP WALL DEPRESSION DETAIL @ DOOR
N.T.S.



TYP CONSTRUCTION JOINT IN WALL
N.T.S.
t = WALL THICKNESS



TYP SLAB CORNER DETAIL @ DOOR
N.T.S.



TYP TOP OF FOUNDATION WALL
N.T.S.

DRILLED PIER SCHEDULE

MARK	SHAFT DIAMETER (DESIGN DIAMETER)	REINF. (NO., SIZE & SPACING)	
		VERTICAL	TIES
DP-3	3'-0"	7#8	#3@16"
DP-4	4'-0"	7#10	#4@18"
DP-5	5'-0"	11#11	#4@18"

NOTES:
1. SEE PLANS FOR DIAMETER OF SHAFT AND TOP ELEVATIONS.
2. SHAFT AXIS SHALL NOT BE MORE THAN 3" IN 10'-0" OUT OF PLUMB U.N.O. IN THE SPECIFICATIONS.
3. THE BOT BEARING SHALL BE LEVEL AND ALL DISTURBED MATERIAL SHALL BE REMOVED.

TYP DRILLED PIER DETAIL
N.T.S.

REBAR LAP SPLICE TABLE

BAR SIZE	LAP LENGTH		
	3,000 PS1	4,000 PS1	5,000 PS1
#3	30"	24"	22"
#4	36"	32"	29"
#5	48"	42"	36"
#6	56"	48"	43"
#7	81"	72"	63"
#8	93"	80"	72"
#9	105"	91"	81"
#10	118"	102"	91"
#11	131"	113"	101"

NOTE: ROCK ANCHOR AND DRILLED PIER DIAGRAMS ARE GENERIC REPRESENTATIONS. SEE SPECIFICATIONS AND GEOTECHNICAL REPORT FOR ADDITIONAL INFORMATION AND REQUIREMENTS REGARDING THESE ELEMENTS. SUBMIT PRODUCT DATA AND TENSIONING INFORMATION FOR REVIEW. SEE SPECIFICATIONS FOR ADDITIONAL REQUIREMENTS.



CWS Architects
Architecture
Space Planning
Value Design

434 Cumberland Avenue
Portland, ME 04101
Phone: (207)774-4441
Fax: (207)774-4016
www.CWSArch.com



75 York Street
Portland, ME 04101-4701
Tel: 207-479-1839
Fax: 207-479-9322

Owner: **WATERVIEW DEVELOPMENT, LLC**
477 CONGRESS SREET
PORTLAND, MAINE 04101
(207) 773-3477

Contractor: **ALLIED/COOK CONSTRUCTION**
PO BOX 1396
PORTLAND, MAINE 04104
(207) 772-2888

THE WATERVIEW AT BAYSIDE CONDOMINIUM
CUMBERLAND AVE
PORTLAND, MAINE

Project No: 2004.414 WVB

Drawing Title: **CONCRETE SECTIONS & DETAILS**

Scale: SCALE: NOTED
Date: PROGRESS 07/15/2005

- Revisions:
- △
 - △
 - △
 - △
 - △
 - △

Drawing Number:

S2.1