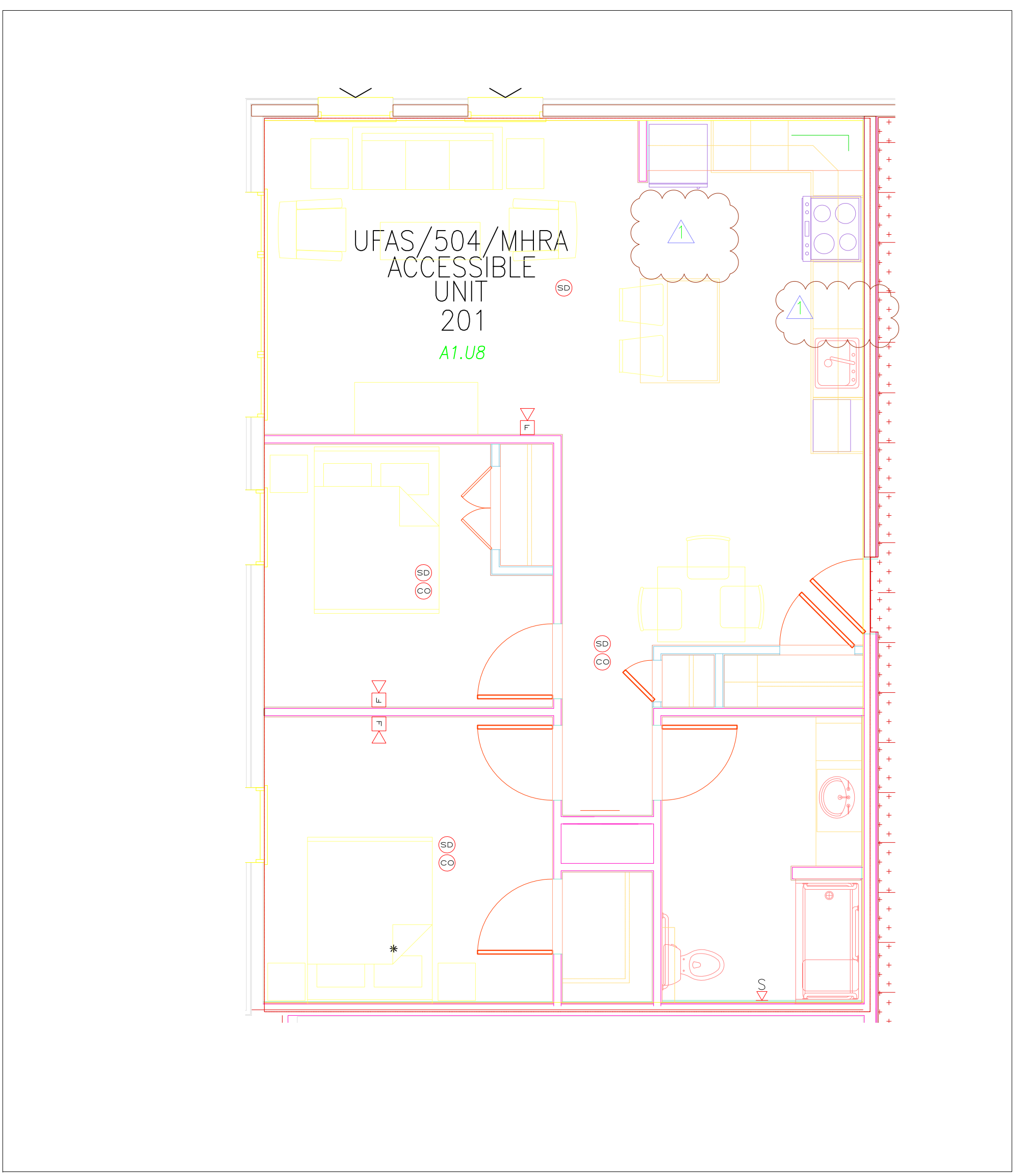
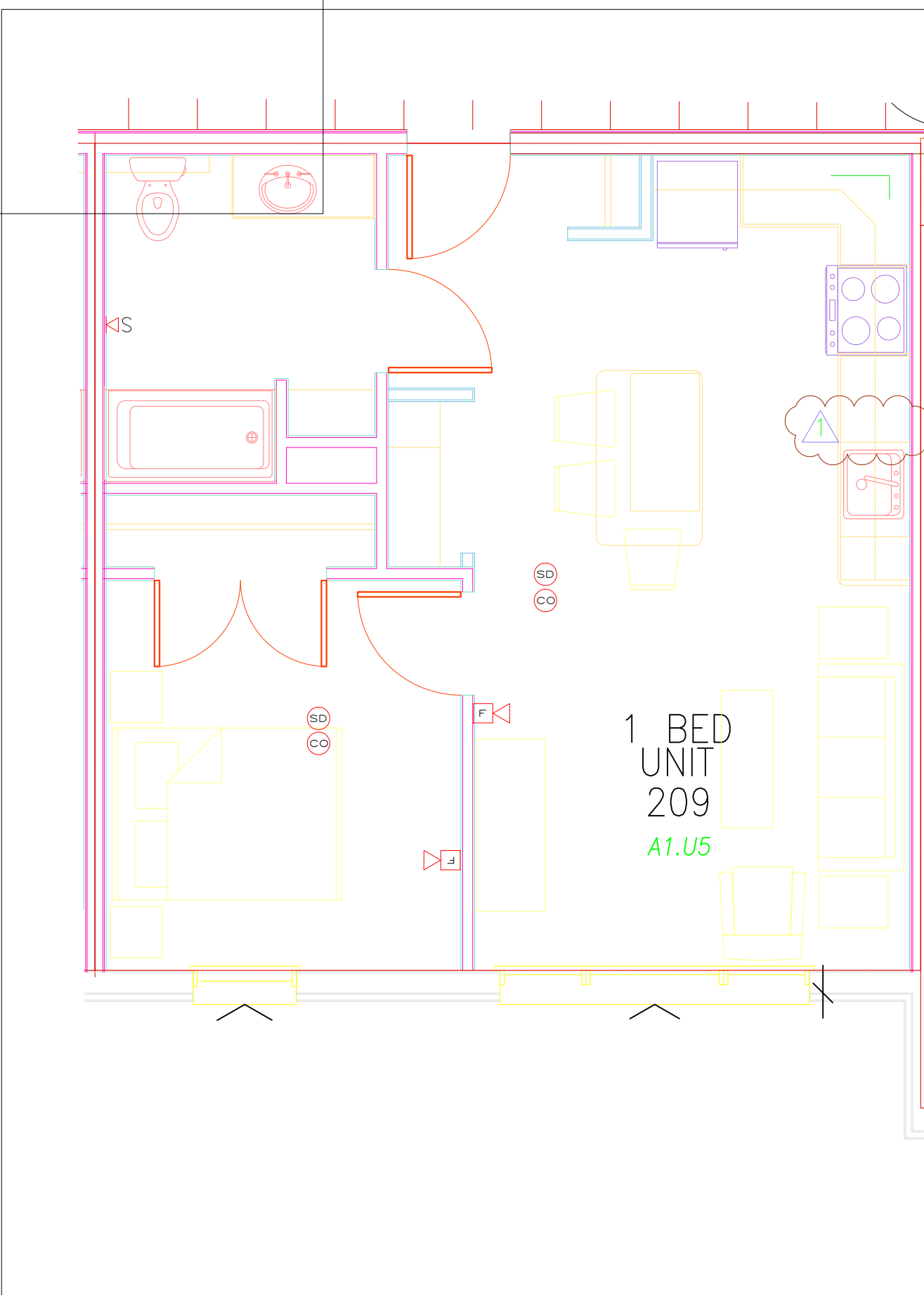
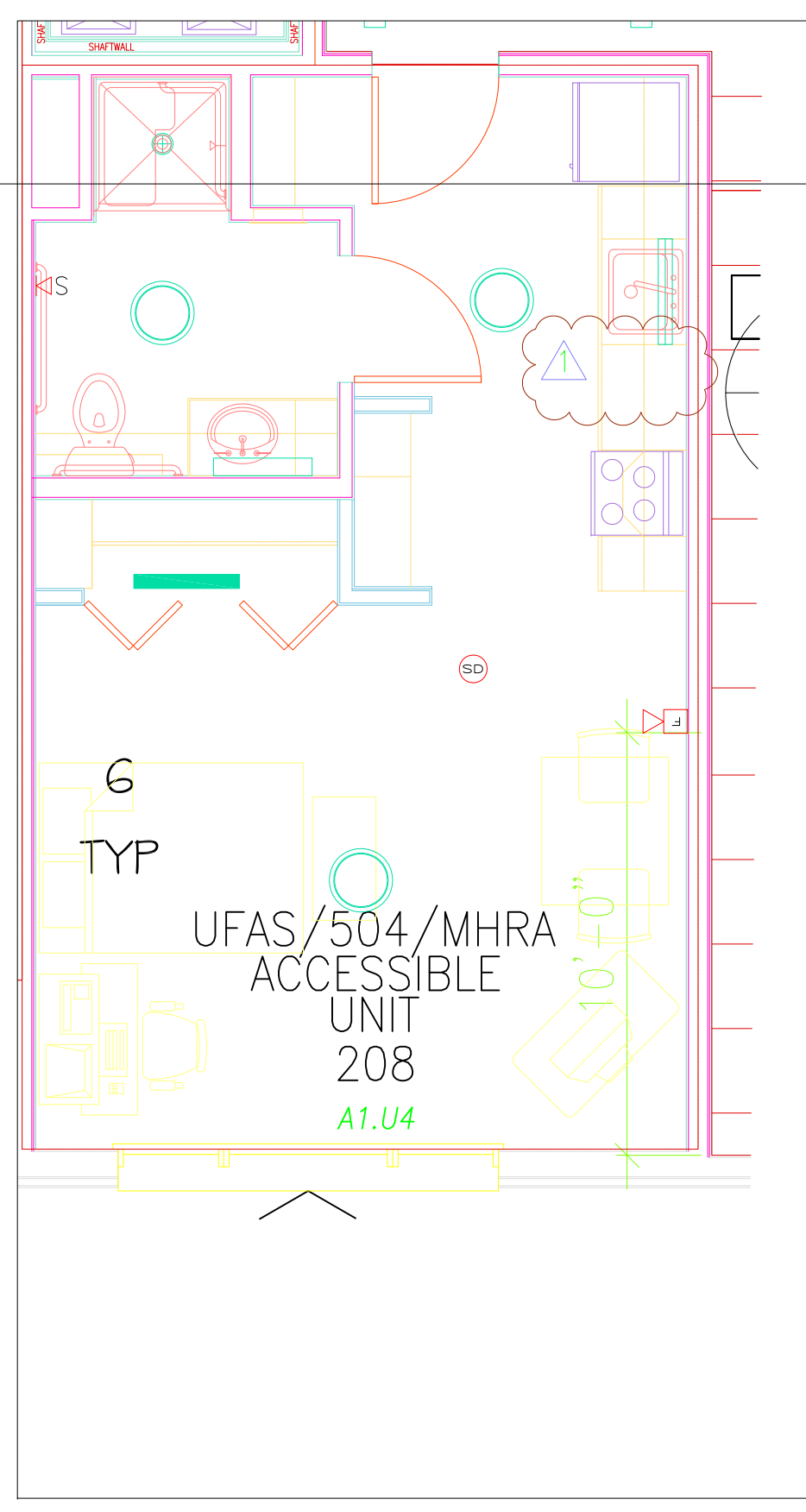


- SWITCHES, OUTLETS, TEL JACKS AND TV JACKS TO BE STAGGERED IN COMMON WALLS BETWEEN UNITS. TYPICAL - PROVIDE PUTTY PADS IN INSTANCES WHERE DEVICES CANNOT BE PROPERLY STAGGERED.
- CONTRACTOR SHALL ROUGH IN BOXES IN ONE OF EACH UNIT TYPE FOR REVIEW IN THE FIELD BY THE OWNER.
- MINIMUM WIRE SIZE IS #12 AWG - #14 AWG WIRE IS NOT PERMITTED.
- PROVIDE AIR-VAPOR BARRIER ELECTRICAL BOXES AT EXTERIOR WALLS, LESSCO OR EQUIVALENT.
- REFER TO ARCHITECTURAL REFLECTED CEILING PLAN TO COORDINATE THE LOCATION OF LIGHTING FIXTURES.
- ALL PRODUCTS OF COMBUSTION DETECTORS (SMOKE DETECTORS) SHALL PROVIDE BOTH AUDIO AND VISUAL ALARMS.
- ALL WIRING PENETRATING INTO BUILDING THERMAL ENVELOPE COMPONENTS SHALL BE PROPERLY "AIR-SEALED".
- SWITCHES FOR RANGE HOOD FAN AND LIGHT SHALL BE MOUNTED AT COUNTER HEIGHT.
- ELECTRICAL PANELS SHALL BE MOUNTED WITH THE TOP BREAKER NOT HIGHER THEN 48" AFF FOR ADA UNITS, ALL NON ADA UNITS 72".
- UNIT THERMOSTATS SHALL BE MOUNTED NOT HIGHER THEN 48" AFF FOR ADA UNITS, ALL NON ADA UNITS 72".

- SUPERVISED CENTRAL SYSTEM ACTIVATION ALL SYSTEM AUDIO/VISUAL AND VISUAL ONLY DEVICES SHALL ALARM.
- WHEN UNIT SMOKE DETECTOR GOES INTO ALARM ALL SINGLE STATION AUDIO/VISUAL AND VISUAL ONLY DEVICES WITHIN THAT UNIT WILL ACTIVATE. THIS WILL NOT ACTIVATE THE ENTIRE BUILDING SYSTEM.
- THE WALL MOUNTED HORN/STROBES WITHIN THE LIVING UNITS SHALL BE CONNECTED TO THE SUPERVISED CENTRAL SYSTEM.
- INTERCONNECT ALL 120 VOLT SINGLE STATION SMOKE DETECTORS WITHIN EACH LIVING UNIT. ALL INTERCONNECTED SMOKE DETECTORS SHALL BE ON THE SAME CIRCUIT FOR PROPER OPERATION. REFER TO MANUFACTURER'S INSTALLATION MANUAL AND MOUNT DETECTORS IN ACCORDANCE WITH MANUFACTURER'S RECOMMENDATIONS.
- CARBON MONOXIDE DETECTORS (120V) IN RESIDENCES SHALL BE INSTALLED AT LEAST 10 FEET FROM ANY HEAT SOURCE.
- INTERCONNECT ALL 120 VOLT CARBON MONOXIDE (CO) DETECTORS WITHIN EACH LIVING UNIT. ALL INTERCONNECTED CO DETECTORS SHALL BE ON THE SAME CIRCUIT FOR PROPER OPERATION. REFER TO MANUFACTURER'S INSTALLATION MANUAL AND MOUNT DETECTORS IN ACCORDANCE WITH MANUFACTURER'S RECOMMENDATIONS. CO DETECTORS SHALL HAVE AN ALARM SOUND THAT IS DIFFERENT THAN THE LIVING UNIT SMOKE DETECTORS AND FIRE ALARM SYSTEM ALARMS.
- AUDIBLE ALARM Db LEVELS SHALL COMPLY WITH NFPA 72.
- A/V DEVICES IN BEDROOMS SHALL BE 75db AND 15 Cd. STROBES SHALL BE 110 Cd FOR HEARING IMPAIRED.



PANEL TP 0/1 BEDROOM (BEDROOM WALL) 120/208 1PH 3W 100 AMP BUS - MCB 22K AIC NEMA TYPE 1 (RECESSED)															
CKT #	LOAD DESCRIPTION	AF	AT	P	CA	DF	DA	CKT #	LOAD DESCRIPTION	AF	AT	P	CA	DF	DA
1	REFRIGERATOR	20	20	1	14	1.00	14	2	RANGE	50	50	2	32	0.30	10
3	KITCHEN OUTLET & RANGE HOOD	20	20	1	14	0.50	7	4	SPARE	20	20	1	0	0.50	0
5	KITCHEN OUTLET	20	20	1	14	0.50	7	6	BATHROOM OUTLET	20	20	1	14	0.50	7
7	KITCHEN OUTLET	20	20	1	14	0.50	7	10	UNIT LIGHTS	20	20	1	10	0.50	5
9	KITCHEN ISLAND	20	20	1	14	0.50	7	12	RECEPTS	20	20	1	9	0.50	5
11	LIVING ROOM OUTLETS	20	20	1	9	0.50	5	14	SPARE	20	20	1	0	0.00	0
13	BEDROOM OUTLETS	20	20	1	9	0.50	5	16	SPARE	20	20	1	0	0.00	0
15	DEDICATED AIR CONDITIONER	20	20	1	15	1.00	15	18	SPACE	0	0				
17	SPACE	0	0					20	SPACE	0	0				
19	SPACE	0	0					22	SPACE	0	0				
21	SPACE	0	0					24	SPACE	0	0				
23	SPACE	0	0												

LOCATION OF PANEL: BEDROOM WALL
 AF - Amp Frame
 AT - Amp Trip
 P - Poles
 A - Amps
 CA - Connected Amperes
 DF - Demand Factor (1 - 1)
 DA - Demand Amperes
 MLO - Main Lug Only
 MCB - Main Circuit Breaker

Tot Amps/PH - Connected Load 100.00
Demand Factor 50.85%
Total Amps/PH - Demand 50.85
Connected KVA 24.00
Demand KVA 12.20
Min. Panel Size (Demand x 1.25) - Amps 63.56
Panel Size (Demand x 1.56) - Amperes 79.33

- NOTES:
 1. PROVIDE ARC FAULT TYPE CIRCUIT BREAKERS IN ACCORDANCE WITH NEC 210.12
 2. PROVIDE TAMPER RESISTANT OUTLETS PER NEC 406.11 SECTION 210.52
 3. INSTALL PER ADA REQUIREMENTS IN ALL ADA UNITS.
 4. CIRCUITS NOT USED SHALL BE LEFT AS SPACES.

PANEL TP 2 BEDROOM (BEDROOM WALL) 120/208 1PH 3W 100 AMP BUS - MCB 22K AIC NEMA TYPE 1 (RECESSED)															
CKT #	LOAD DESCRIPTION	AF	AT	P	CA	DF	DA	CKT #	LOAD DESCRIPTION	AF	AT	P	CA	DF	DA
1	REFRIGERATOR	20	20	1	14	1.00	14	2	RANGE	50	50	2	32	0.50	16
3	KITCHEN OUTLET & RANGE HOOD	20	20	1	14	0.50	7	4	SPARE	20	20	1	0	0.50	0
5	KITCHEN OUTLET	20	20	1	14	0.50	7	6	BATHROOM OUTLET	20	20	1	14	0.50	7
7	KITCHEN OUTLET	20	20	1	14	0.50	7	10	UNIT LIGHTS	20	20	1	10	0.50	5
9	KITCHEN ISLAND	20	20	1	14	0.50	7	12	RECEPTS	20	20	1	9	0.50	5
11	LIVING ROOM OUTLETS	20	20	1	9	0.50	5	14	BEDROOM OUTLETS	20	20	1	9	0.50	5
13	BEDROOM OUTLETS	20	20	1	9	0.50	5	16	SPARE	20	20	1	0	0.00	0
15	DEDICATE AIR CONDITIONER	20	20	1	15	1.00	15	18	SPACE	0	0				
17	SPACE	0	0					20	SPACE	0	0				
19	SPACE	0	0					22	SPACE	0	0				
21	SPACE	0	0					24	SPACE	0	0				
23	SPACE	0	0												

LOCATION OF PANEL: BEDROOM WALL
 AF - Amp Frame
 AT - Amp Trip
 P - Poles
 A - Amps
 CA - Connected Amperes
 DF - Demand Factor (1 - 1)
 DA - Demand Amperes
 MLO - Main Lug Only
 MCB - Main Circuit Breaker

Tot Amps/PH - Connected Load 107.00
Demand Factor 56.78%
Total Amps/PH - Demand 60.75
Connected KVA 25.68
Demand KVA 14.58
Min. Panel Size (Demand x 1.25) - Amps 75.94
Panel Size (Demand x 1.56) - Amperes 94.77

- NOTES:
 1. PROVIDE ARC FAULT TYPE CIRCUIT BREAKERS IN ACCORDANCE WITH NEC 210.12
 2. PROVIDE TAMPER RESISTANT OUTLETS PER NEC 406.11 SECTION 210.52
 3. INSTALL PER ADA REQUIREMENTS IN ALL ADA UNITS.
 4. CIRCUITS NOT USED SHALL BE LEFT AS SPACES.