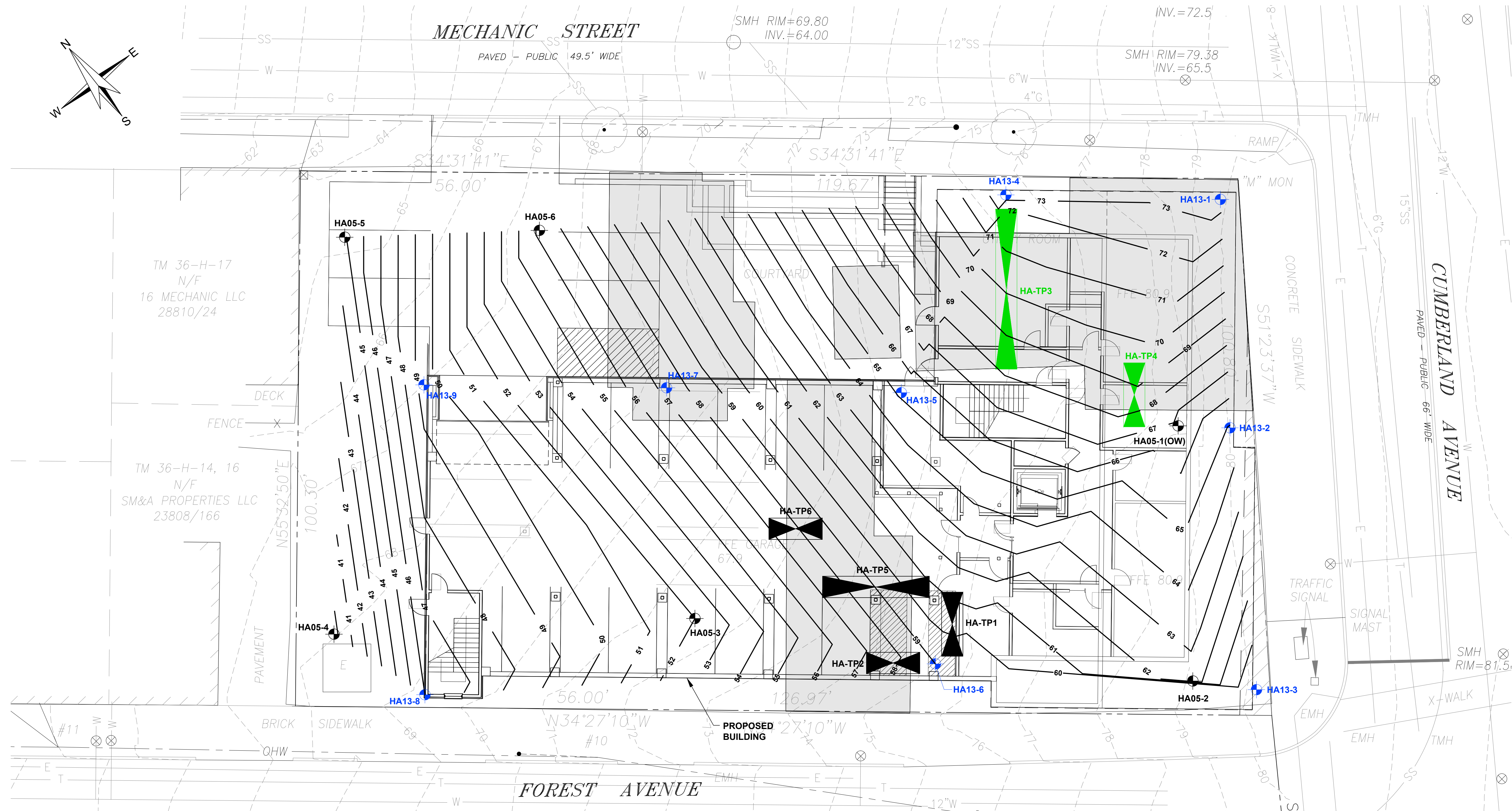
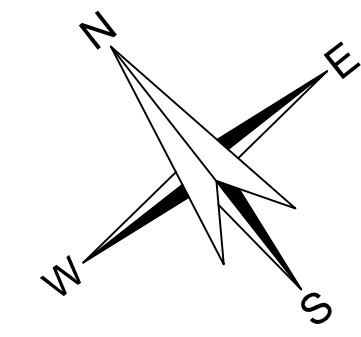


REVISION DESCRIPTION	DATE



LEGEND:

- HA13-1** DESIGNATION AND APPROXIMATE LOCATION OF TEST BORING DRILLED BY MAINE TEST BORINGS OF HERMON, MAINE IN JANUARY/FEBRUARY 2005 AND APRIL 2013 (BLACK SYMBOL INDICATES CORING CONDUCTED, BLUE SYMBOL INDICATES ROLLER BIT ADVANCEMENT INTO ROCK FOR CONFIRMATION)
- HA-TP2** DESIGNATION AND APPROXIMATE LOCATION OF TEST PIT EXCAVATED BY MACKENZIE LANDSCAPING, INC. OF WATERVILLE, MAINE ON 23 MAY 2013 (GREEN SYMBOL INDICATES TOP OF BEDROCK SURFACE OBSERVED IN BOTTOM OF TEST PIT, BLACK SYMBOL INDICATES BEDROCK SURFACE NOT ENCOUNTERED)
- (OW)** DENOTES OBSERVATION WELL INSTALLED IN COMPLETED BOREHOLE
- 68** EXISTING GROUND SURFACE ELEVATION CONTOUR
- 41** TOP OF BEDROCK ELEVATION CONTOUR
- [Hatched Area]** APPROXIMATE LOCATION AND LIMITS OF FORMER SITE BUILDINGS DEMOLISHED IN 2005

NOTES:

1. EXISTING SITE CONDITIONS, CONTOURS OF EXISTING GROUND SURFACE ELEVATIONS AND THE LOCATION AND ORIENTATION OF EXISTING SITE FEATURES ARE TAKEN FROM THE ELECTRONIC AUTOCAD FILE ENTITLED "13-023 SURVEY.DWG," PROVIDED BY CWS ARCHITECTS ON 7 MAY 2013.
2. THE LOCATIONS OF FORMER SITE BUILDINGS SHOULD BE CONSIDERED APPROXIMATE AND WERE TAKEN FROM THE ELECTRONIC AUTOCAD FILE ENTITLED "EXCONPLAN_COHEN-WATERVIEW-APT.DWG" PROVIDED BY CWS ARCHITECTS ON 2 MARCH 2005.
3. THE LOCATION AND ORIENTATION OF PROPOSED SITE FEATURES ARE TAKEN FROM THE ELECTRONIC AUTOCAD FILE ENTITLED "13-4-5 SITE PLAN.DWG," PROVIDED BY MITCHELL & ASSOCIATES ON 7 MAY 2013.
4. SUBSURFACE EXPLORATIONS WERE MONITORED IN THE FIELD BY HALEY & ALDRICH, INC. PERSONNEL
5. THE PLAN LOCATION OF SUBSURFACE EXPLORATIONS ARE APPROXIMATE AND WERE DETERMINED IN THE FIELD BY HALEY & ALDRICH, INC. BY TAPING/PACING DISTANCES FROM EXISTING SITE FEATURES.
6. ELEVATIONS ARE IN FEET AND REFERENCE THE NATIONAL GEODETIC VERTICAL DATUM OF 1929 (NGVD 29; PORTLAND CITY DATUM).
7. REFER TO THE GEOTECHNICAL DATA REPORT PREPARED BY HALEY & ALDRICH, INC. DATED 27 MAY 2013 FOR LOGS OF TEST BORINGS AND TEST PITS AND OBSERVATION WELL INSTALLATION AND GROUNDWATER MONITORING REPORTS.
8. BEDROCK IS DEFINED AS MATERIAL GEOLOGICALLY CLASSIFIED AS ROCK AND INTERPRETED AS REQUIRING SYSTEMATIC DRILLING AND BLASTING FOR EFFECTIVE EXCAVATION.
9. TOP OF BEDROCK DEPTHS SHOWN ON THE TEST BORING AND TEST PIT LOGS ARE BASED ON OBSERVED/DOCUMENTED CONDITIONS IN EXPLORATIONS SHOWN. TOP OF BEDROCK ELEVATIONS AT EXPLORATION LOCATIONS WERE DETERMINED BY SUBTRACTING THE DEPTH FROM THE INTERPOLATED GROUND SURFACE ELEVATION. MINOR VARIATIONS MAY EXIST AS A RESULT OF GROUND SURFACE ELEVATION IRREGULARITIES AND/OR INTERPOLATION DIFFERENCES.
10. TOP OF BEDROCK ELEVATION CONTOURS WERE GENERATED BY LINEAR INTERPOLATION BETWEEN SUBSURFACE EXPLORATIONS SHOWN AND ARE PRESENTED FOR PURPOSES OF INDICATING GENERAL TRENDS ONLY. ACTUAL FIELD CONDITIONS WILL VARY FROM THE INDICATED CONTOURS.
11. THE NATURE OF BEDROCK DATA IS DEFINED BY COLOR OF EXPLORATION MARKER AS INDICATED IN THE LEGEND.
12. LOCAL VARIATIONS IN THE TOP OF BEDROCK ELEVATIONS HAVE BEEN OBSERVED WITHIN NUMEROUS SUBSURFACE EXPLORATIONS. THIS CONDITION SHOULD BE ANTICIPATED AT OTHER LOCATIONS (BETWEEN EXPLORATIONS) WITHIN THE PROJECT SITE.