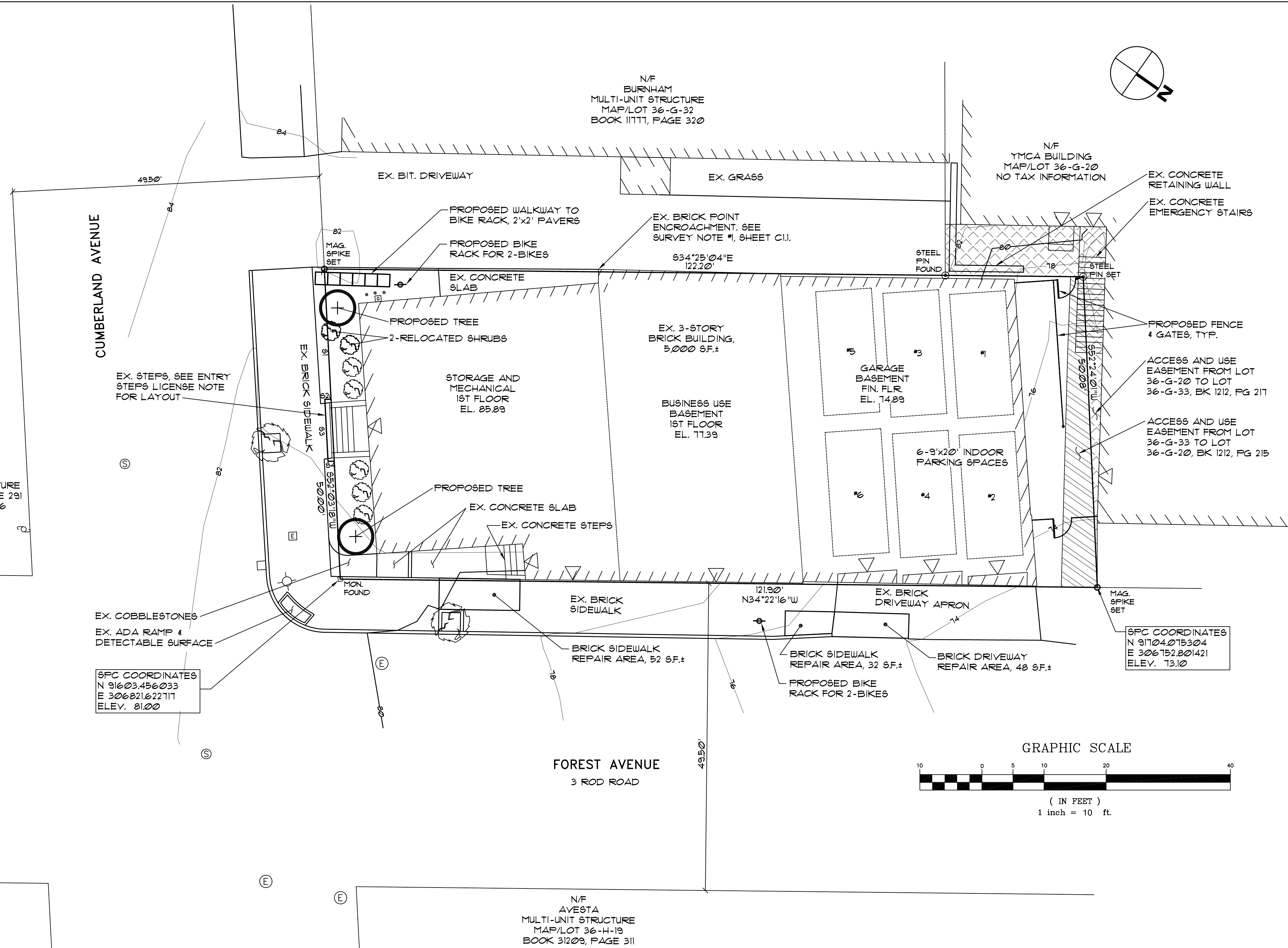


N/F  
MMC REALTY  
MULTI-UNIT STRUCTURE  
BOOK 10280, PAGE 291  
MAP/LOT 31-E-6



**LEGEND**

EXISTING	PROPOSED
PROPERTY LINE	BICYCLE RACK
ABUTTERS PROPERTY	WOOD FENCE
EASEMENT	CHAINLINK FENCE
EDGE OF PAVEMENT	FENCE GATE
CURB	STREET TREE
CONTOURS	CONCRETE PAVERS
BUILDING	
BUILDING ENTRY/EGRESS	
ELECTRIC PULLBOX	
ELECTRIC MANHOLE	
SEWER MANHOLE	
GAS METER	
UTILITY POLE	
LIGHT SIGNAL SUPPORT	
MONUMENT	
MAGNETIC SPIKE	
STEEL PIN	
SHRUB	
BOLLARD	
EASEMENT AREAS	

**BUILDING UNIT USE SCHEDULE**

APT. #	FLOOR LEVEL	FLOOR AREA (SF)
13	1ST	720
14	1ST	748
15	1ST	1,192
21	2ND	878
22	2ND	915
23	2ND	634
24	2ND	720
25	2ND	820
31	PENTHOUSE	900
<b>RESIDENTIAL TOTAL</b>		<b>7,527</b>
<b>COMMERCIAL</b> 0 1ST		<b>2,450</b>
<b>GARAGE</b> 0		<b>1,600</b>
<b>BASEMENT</b> 0		<b>1,550</b>
<b>COMMON AREA</b> 0		<b>750</b>
<b>COMMERCIAL TOTAL</b>		<b>6,350</b>

**ENTRY STEPS LICENSE**

PROPOSED LICENSE:  
FROM THE CITY OF PORTLAND TO  
415 CA, LLC FOR ENTRY STEPS

LINE	BEARING	DISTANCE
S1	N 52°03'18" E	21.00'
S2	S 34°25'04" E	1.00'
S3	N 52°03'18" E	10.00'
S4	N 34°22'16" W	1.00'

SUBDIVISION PLAT, APPROVED BY THE  
CITY OF PORTLAND PLANNING BOARD

Sheet Title:  
**SUBDIVISION RECORDING PLAT SHEET 1 OF 2**

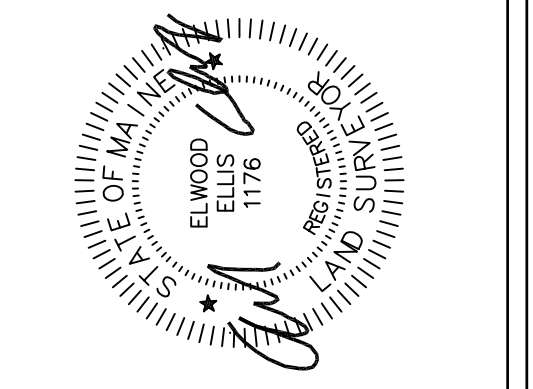
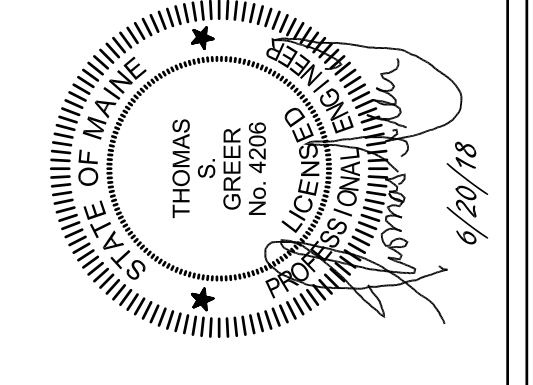
Job No.: 17164  
Date: 1/16/18  
Scale: AS SHOWN  
Drawn: AS SHOWN  
Checked: AS SHOWN

Sheet No.:  
DATE

**WALSH**  
ENGINEERING ASSOCIATES, INC.

One Karen Dr., Suite 2A | Westbrook, Maine 04092  
ph: 207.553.9898 | www.walsh-eng.com

Copyright © 2018



**415 CUMBERLAND AVENUE**  
415 CUMBERLAND AVENUE  
PORTLAND, MAINE

**415 CA, LLC**  
25 EDGEHILL ROAD  
BROOKLINE, MA 02445

Rev.	Date	Description	Drawn	Check
1	5/20/18	REV'D PER PRELIM CITY REVIEW	JDC	TSG
2	1/17/18	REV'D PER CITY REVIEW	JDC	TSG
3	6/16/18	REV'D NUMBER OF UNITS	JDC	TSG

Job No.: 17164  
Date: 1/16/18  
Scale: AS SHOWN  
Drawn: AS SHOWN  
Checked: AS SHOWN

Sheet No.:  
DATE