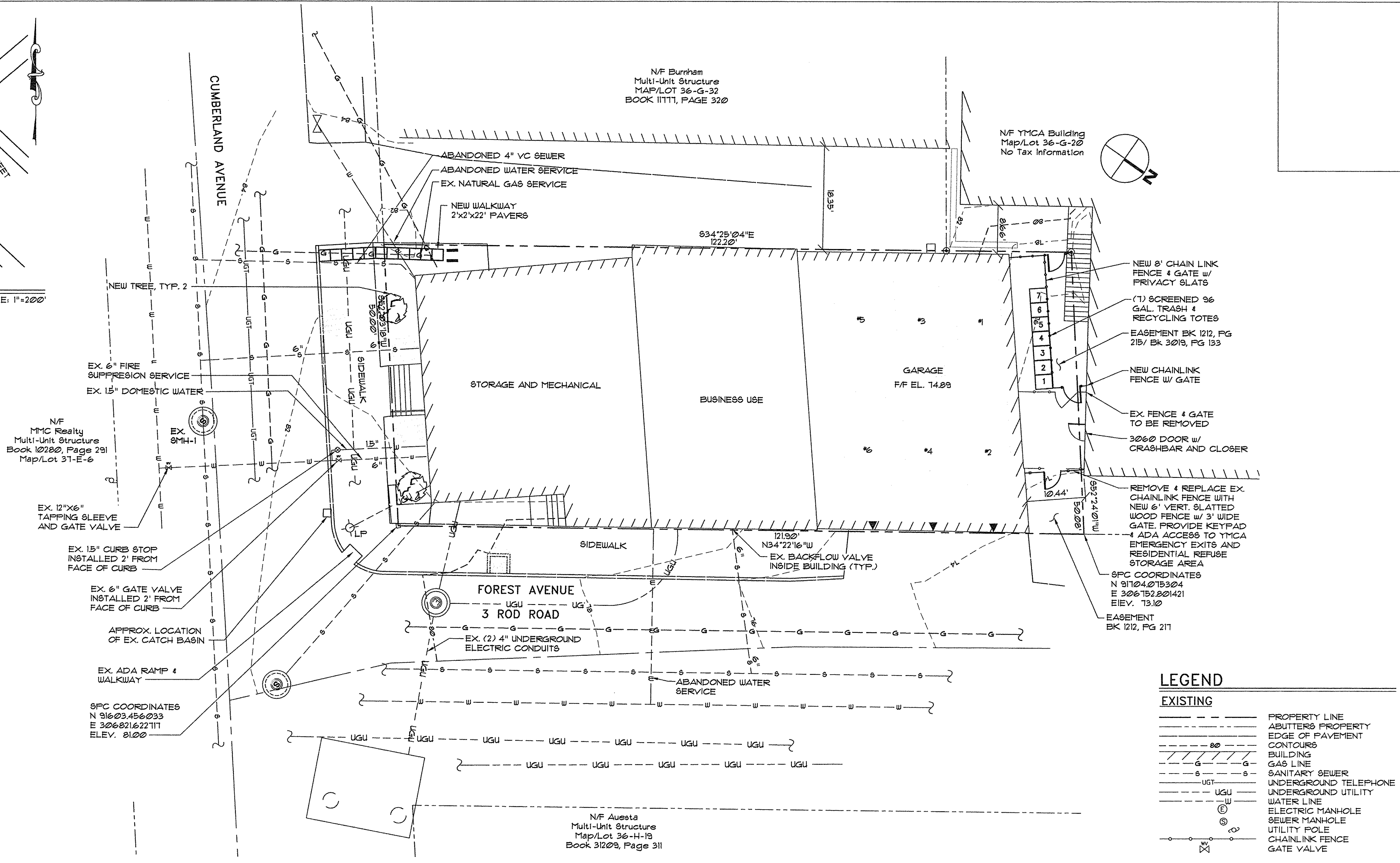


LOCATION MAP
SCALE: 1"=200'

DRAWING LIST

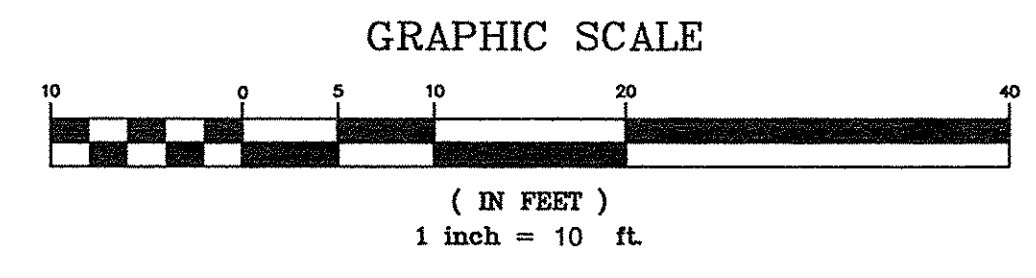
- C1.0 - SUBDIVISION RECORDING PLAT SHEET 1 OF 2
- C1.1 - SUBDIVISION RECORDING PLAT SHEET 2 OF 2
- A1.01 - FLOOR PLANS
- A2.01 - ELEVATIONS



LEGEND

EXISTING

---	PROPERTY LINE
---	ADJUTERS PROPERTY
---	EDGE OF PAVEMENT
---	CONTOURS
---	BUILDING
---	GAS LINE
---	SANITARY SEWER
---	UNDERGROUND TELEPHONE
---	UNDERGROUND UTILITY
---	WATER LINE
---	ELECTRIC MANHOLE
---	SEWER MANHOLE
---	UTILITY POLE
---	CHAINLINK FENCE
---	GATE VALVE



BUILDING UNIT APARTMENT SCHEDULE

APT. #	FLOOR LEVEL	FLOOR AREA (SF)
13	1ST	720
14	1ST	740
21	2ND	911
22	2ND	915
23	2ND	1530
24	2ND	720
25	2ND	820
RESIDENTIAL TOTAL		6,430
COMMERCIAL	0 4 1ST	3,800
GARAGE	0	1,600
BASEMENT	0	1,550
COMMON AREA	0	750
COMMERCIAL TOTAL		7,700

SUBDIVISION PLAT, APPROVED BY THE CITY OF PORTLAND PLANNING BOARD

DATE _____

WALSH
ENGINEERING ASSOCIATES, INC.
One Karen Dr., Suite 2A | Westbrook, Maine 04092
ph: 207.553.9898 | www.walsh-eng.com
Copyright © 2018

STATE OF MAINE
THOMAS S. GREER
No. 42008
LICENSED PROFESSIONAL ENGINEER

Elu Elu

415 CUMBERLAND AVENUE
415 CUMBERLAND AVENUE
PORTLAND, MAINE

415 CA, LLC
25 EDGEHILL ROAD
BROOKLINE, MA 02445

Rev.	Date	Description	Drawn	Check

Sheet Title:
SUBDIVISION RECORDING PLAT SHEET 1 OF 2

Job No.: 17164
Date: 1/16/18
Scale: AS SHOWN
Drawn: ES
Checked: RL

Sheet No.: **C1.0**

N:\017164-CUMBERLAND AVE 415 PORTLAND.ME\017164-1802.dwg plot date: 1/16/2018 8:04 AM