

ALPHAarchitects
17 CHESTNUT STREET
PORTLAND, ME 04101
PHONE: 207.761.9500
FAX: 207.761.9595
design@alphaarchitects.com

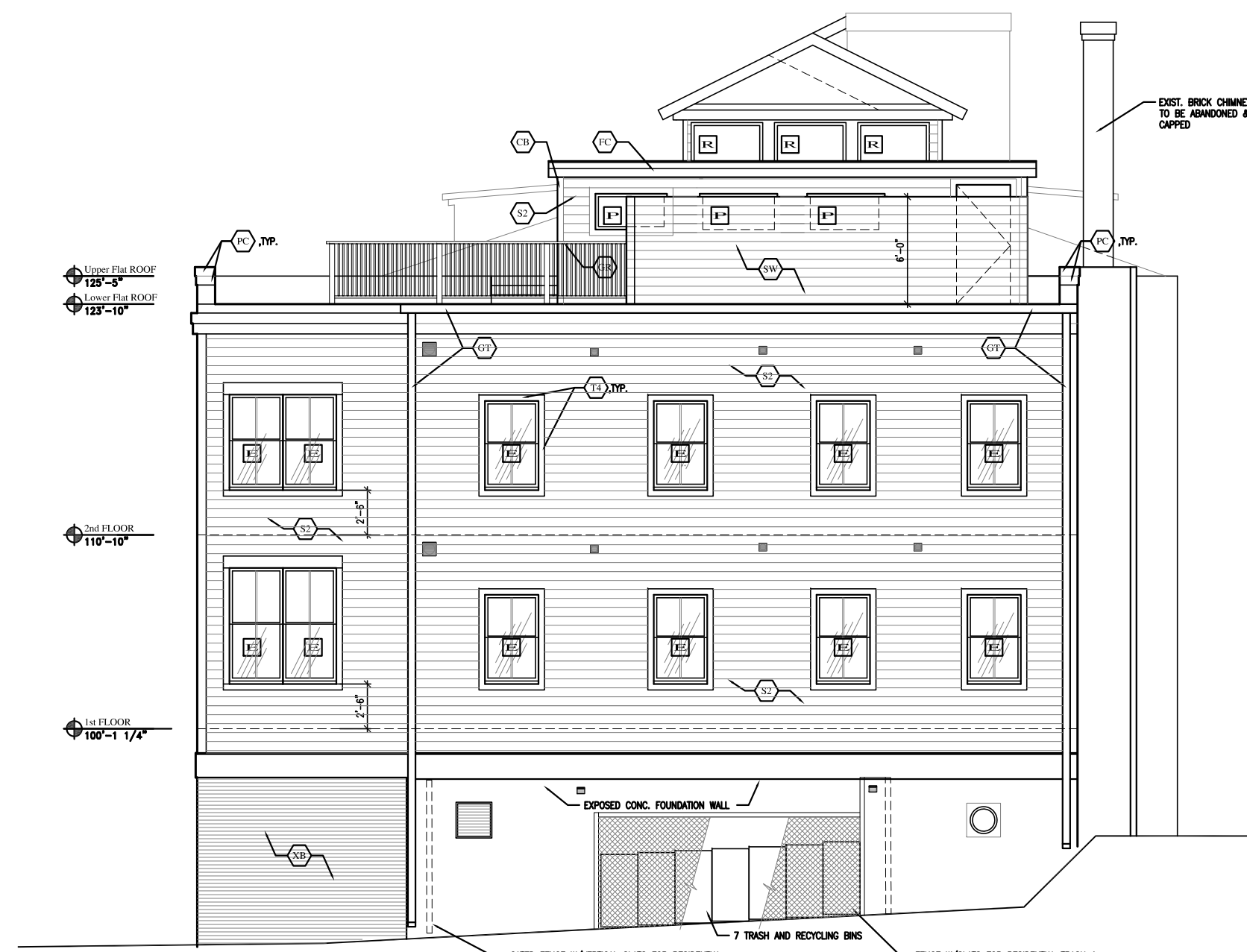
COPYRIGHT

Reuse or reproduction of the contents of this document is not permitted without written permission of ALPHA ARCHITECTS

PRELIMINARY:
NOT FOR
CONSTRUCTION:



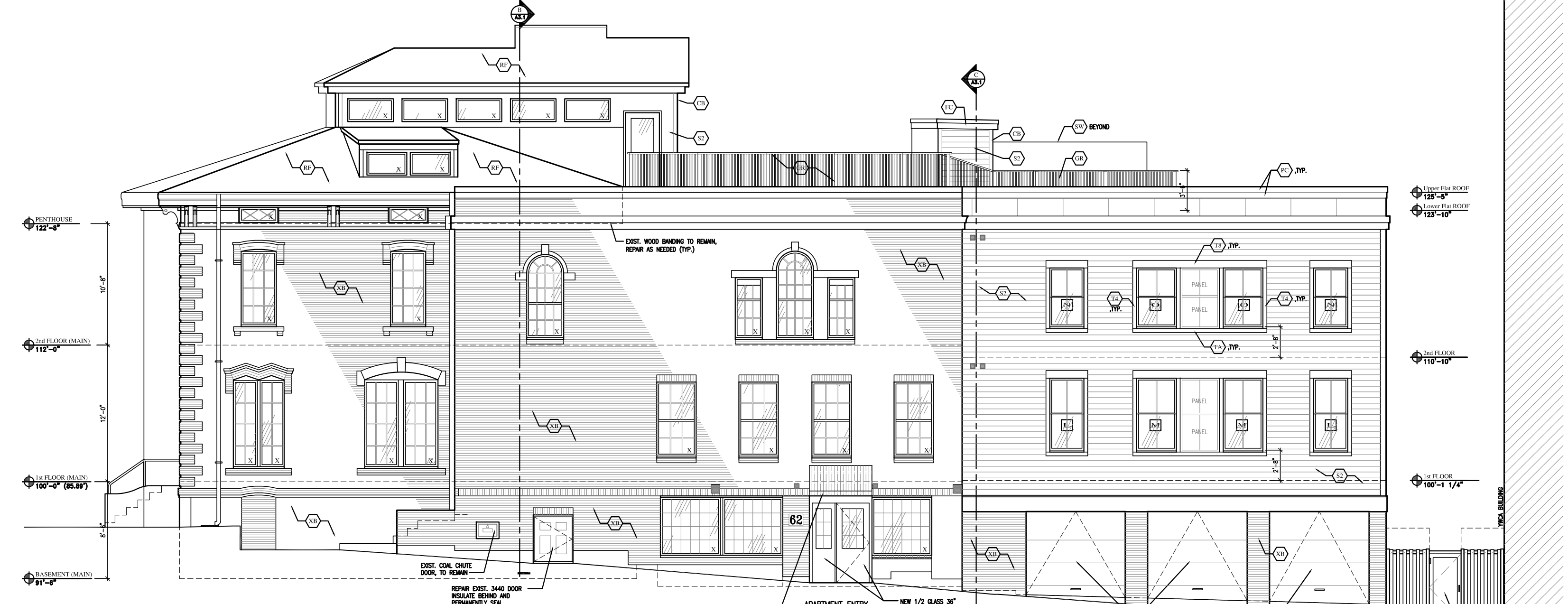
CUMBERLAND AVENUE ELEVATION
SCALE: 1/8" = 1'-0"



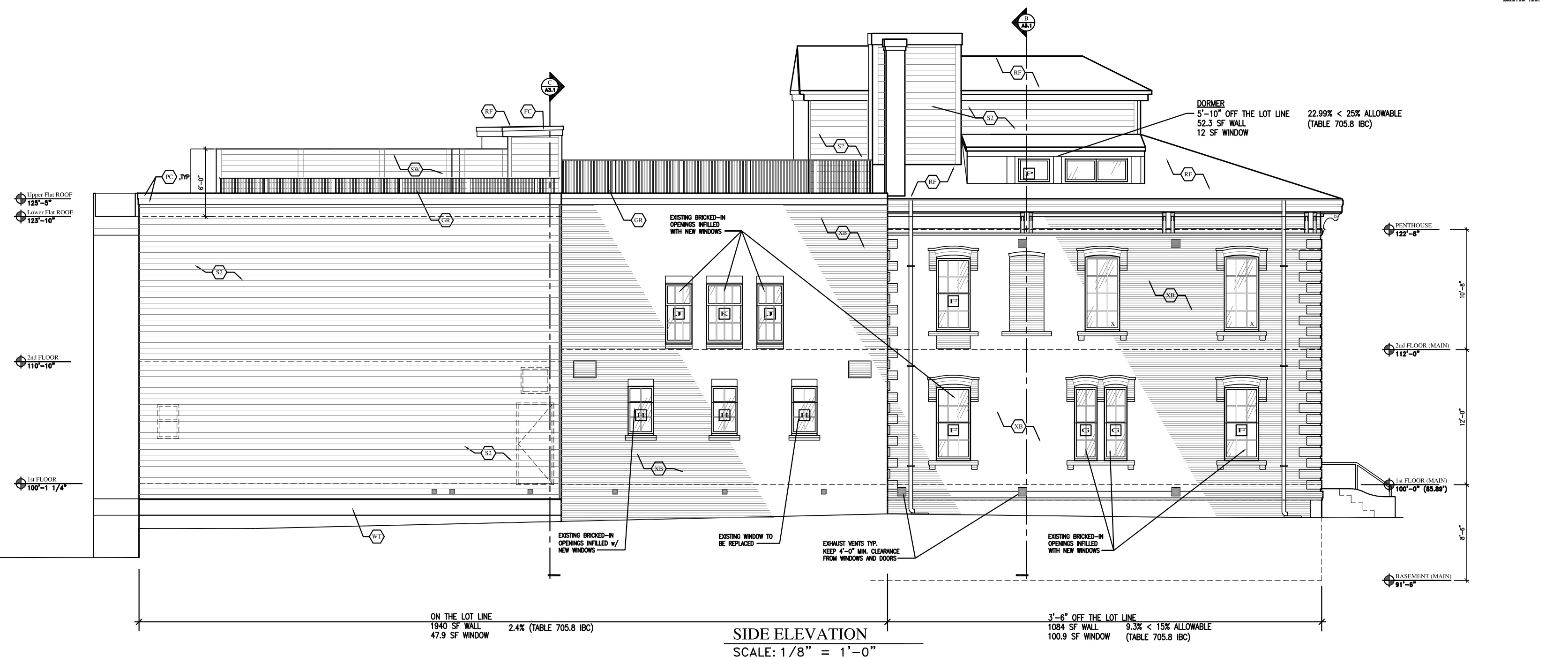
ALLEY ELEVATION
SCALE: 1/8" = 1'-0"



MEZZ. ENTRY ELEVATION
SCALE: 1/8" = 1'-0"



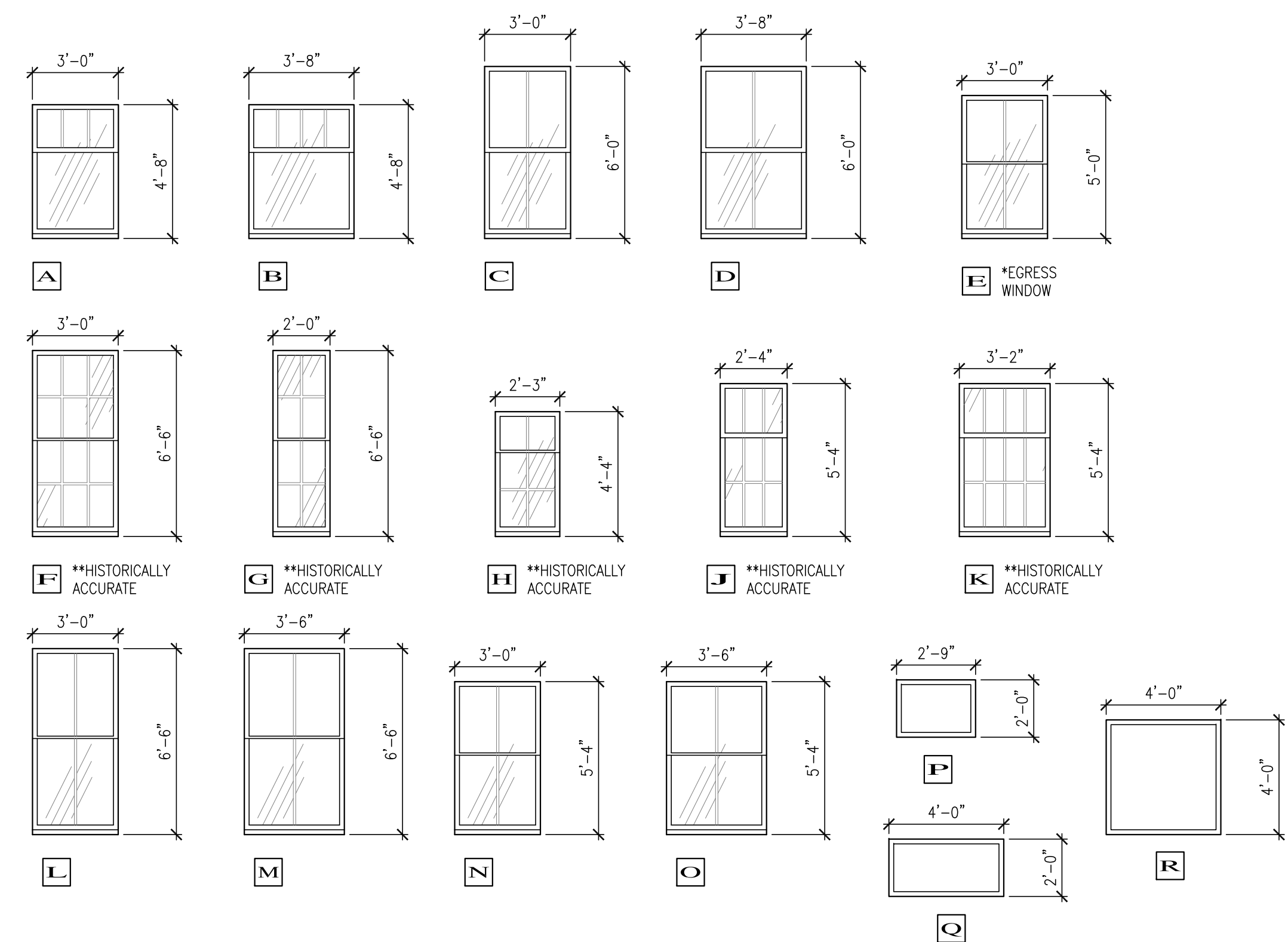
FOREST AVENUE ELEVATION
SCALE: 1/8" = 1'-0"



SIDE ELEVATION
SCALE: 1/8" = 1'-0"

MATERIAL LEGEND:

- CB 1x6 'HARDI' CORNER BOARDS -COLOR:
- FC 1x4 ON 1x10 'HARDI' FASCIA w/ CONT. PREFINISHED ALUM. FLASHING -COLOR:
- GR +42" WHITE 'PREMIER' COMPOSITE RAILING SYSTEM
- GT 6" PREFINISHED ALUM. GUTTER SYSTEM ON ALUM. CLAD 1x8 FACIA -COLOR: BROWN GUTTER w/ BROWN DOWNSPOUTS
- PC 1x6 ON 1x10 TRIM BD. w/ PREFINISHED ALUM. CAP -COLOR:
- T4 4" HARDI TRIM
- T8 8" HARDI TRIM
- RF MEMBRANE ROOFING SYSTEM. REFER TO PENTHOUSE PLAN
- S1 48" x 32" 'HARDIE' REVEAL PANEL SYSTEM w/ ALUM. TRIM OVER 'TYPAR' BUILDING WRAP, TYP. -COLOR: WITH ALUM. FRY REGLETS
- SW 6' TALL SCREEN WALL/FENCE w/ 1x6 HORIZ. HARDI BOARDS ALTERNATING Ed. SIDE -COLOR: TBD
- XB EXISTING BRICK VENEER, TO REMAIN



WINDOW TYPES
SCALE: 1/4" = 1'-0"

Station 415
 415 Cumberland Avenue
 Portland, ME. 04101

JOB: 16110

ISSUE DATE	
PRELIM	01-17-16
SFMO	-
CD's	-
REV. 1	-
REV. 2	-
PRINT	09-20-16

EXTERIOR ELEVATIONS

A2.1

09-20-16