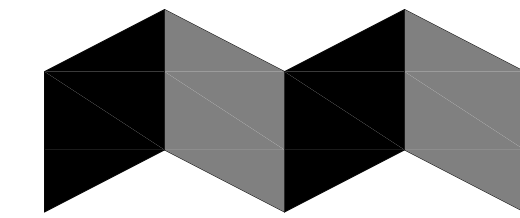


Station 415



ALPHAarchitects
17 CHESTNUT STREET
PORTLAND, ME 04101
PHONE: 207.761.9500
FAX: 207.761.9595
design@alphaarchitects.com

COPYRIGHT
Reuse or reproduction of the contents of this document is not permitted without written permission of ALPHA ARCHITECTS



Station 415

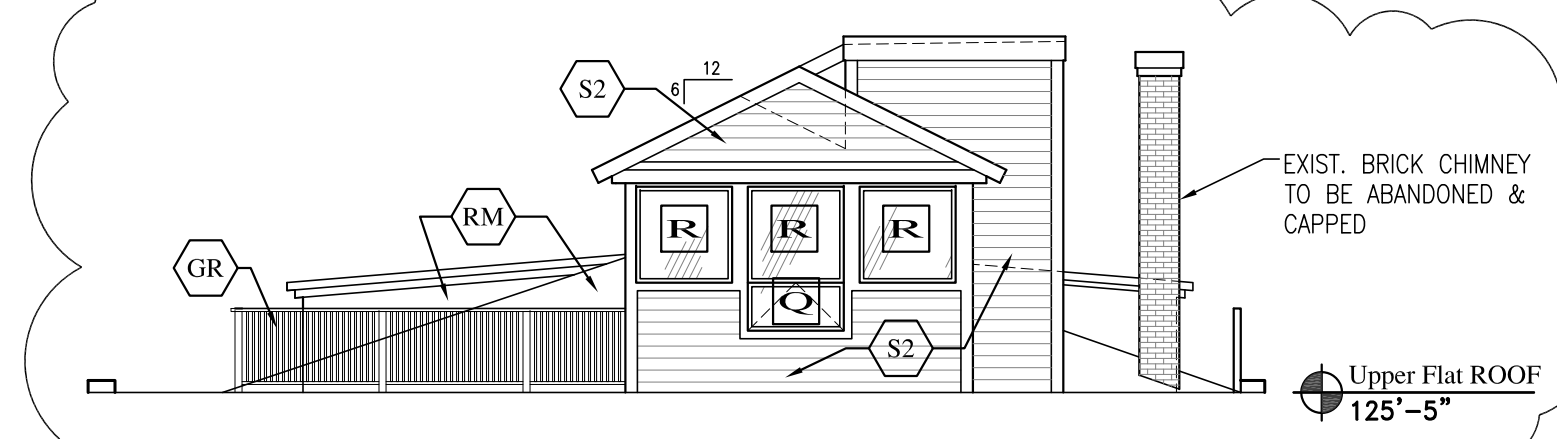
415 Cumberland Avenue
Portland, ME. 04101

JOB: 16110

ISSUE DATE	
PRELIM	01-17-16
SFMO	-
CD's	-
REV. 1	-
REV. 2	-
PRINT	09-27-16

EXTERIOR ELEVATIONS
A2.0

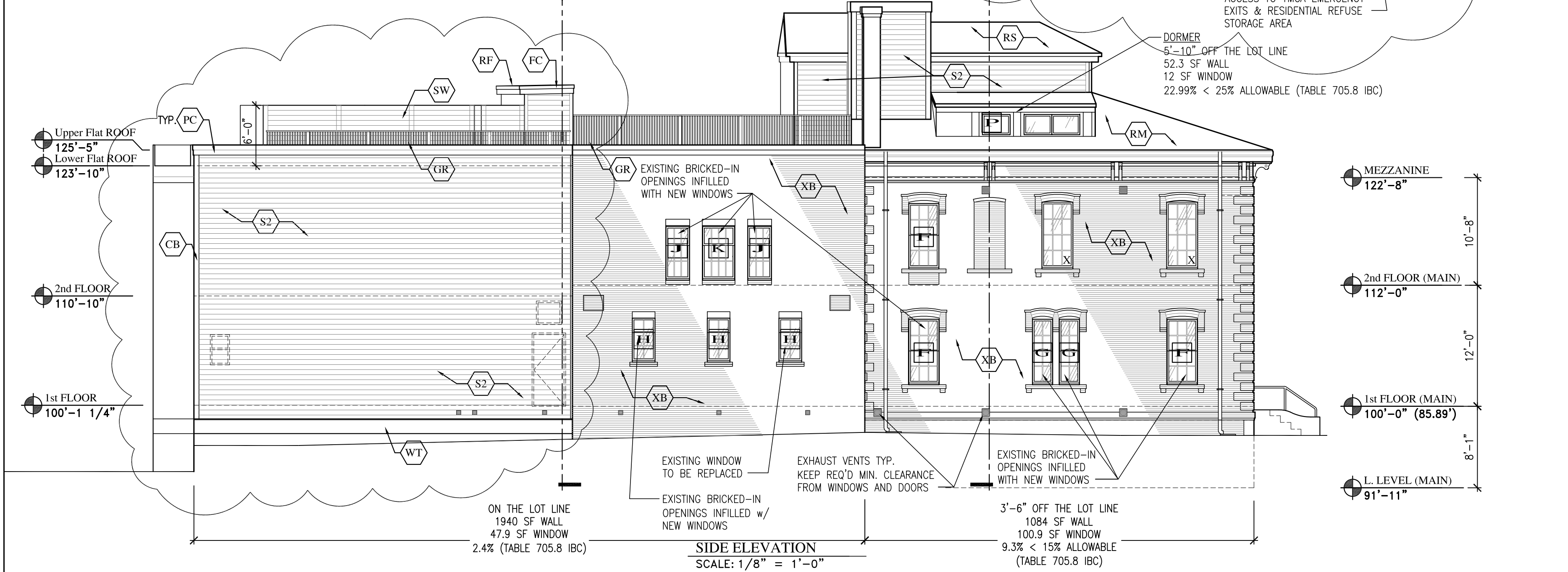
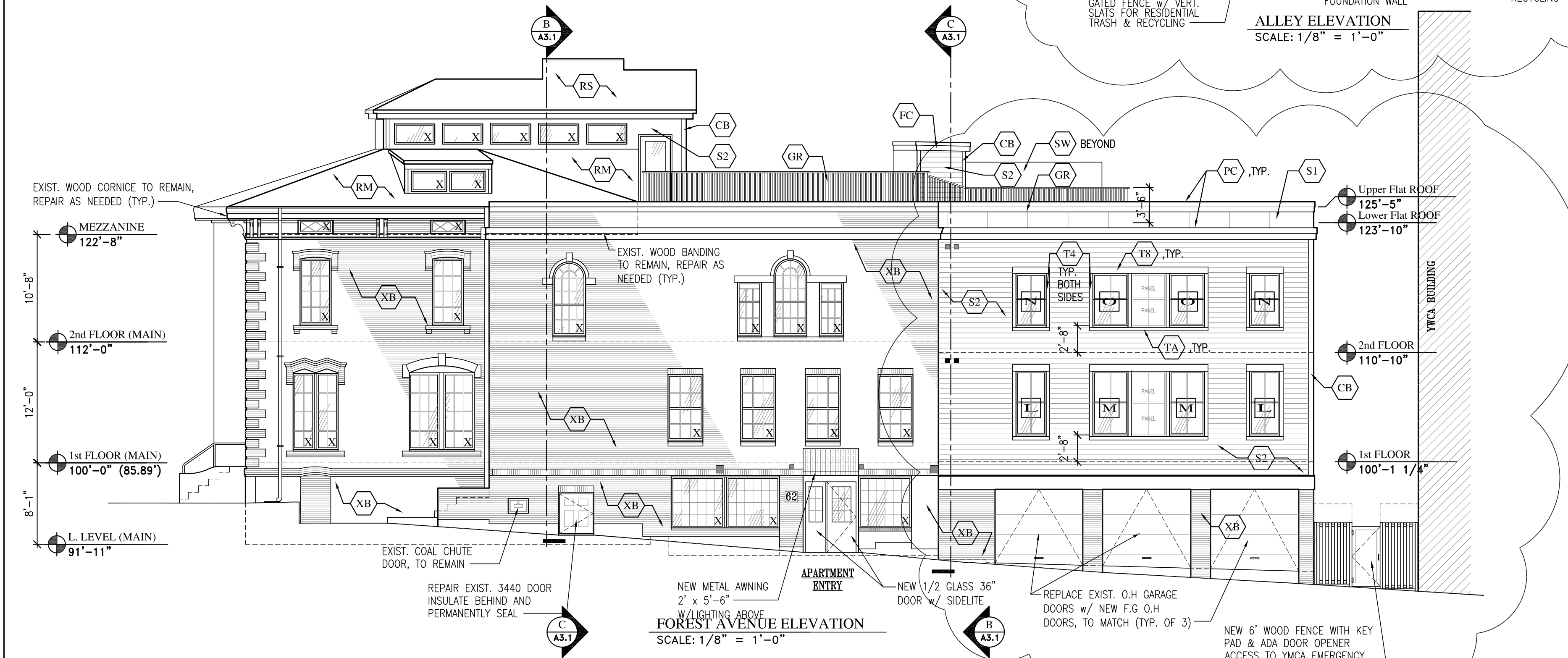
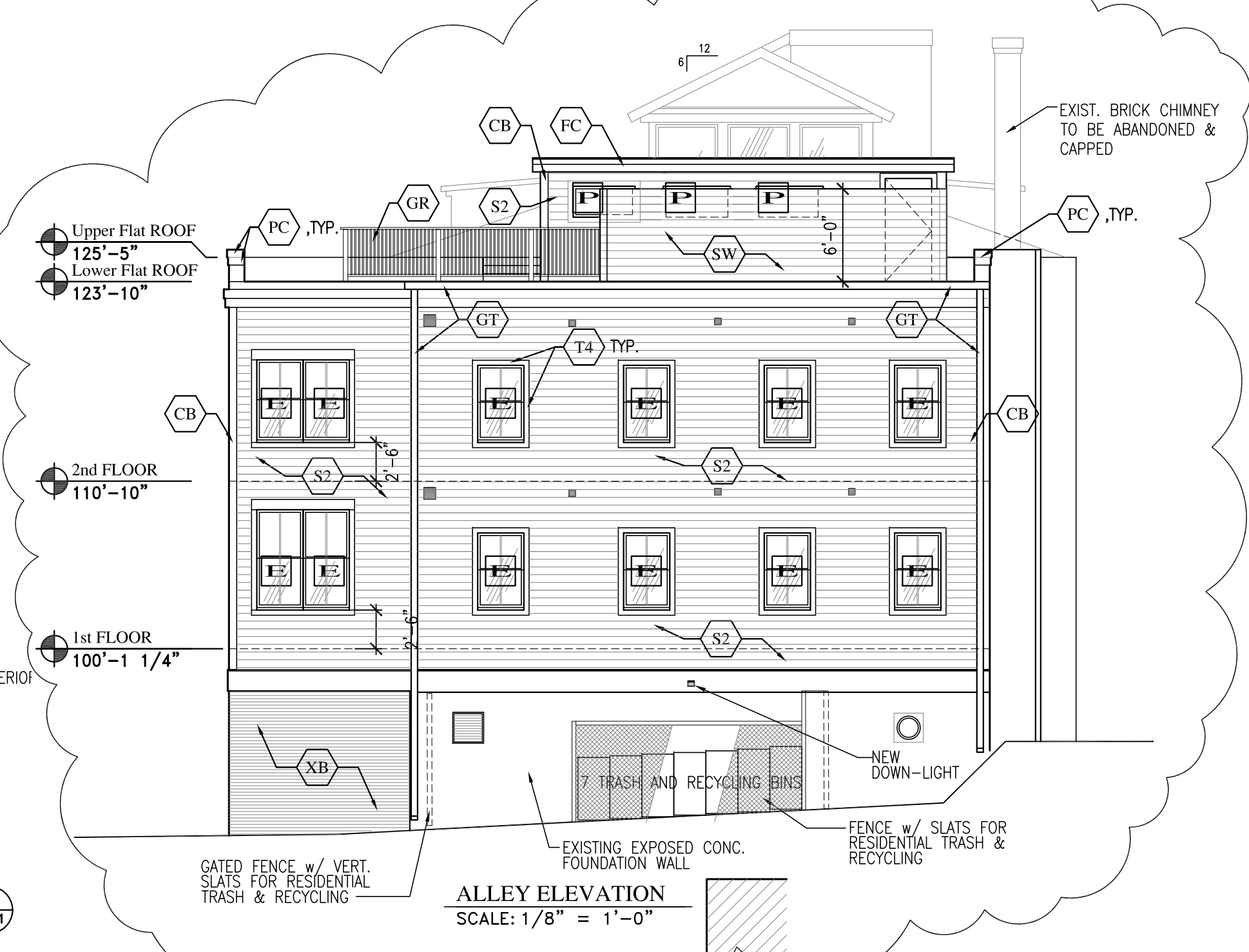
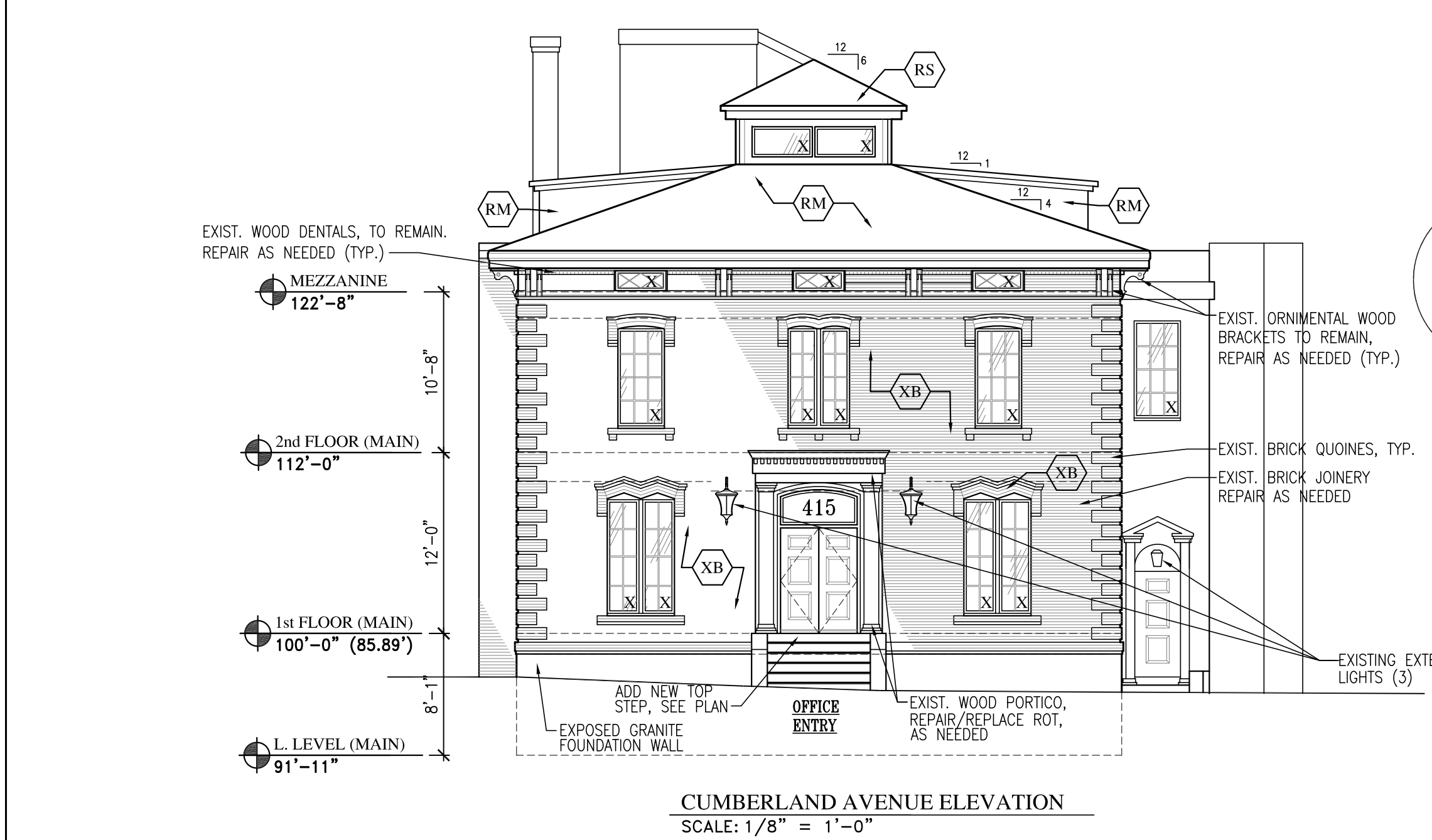
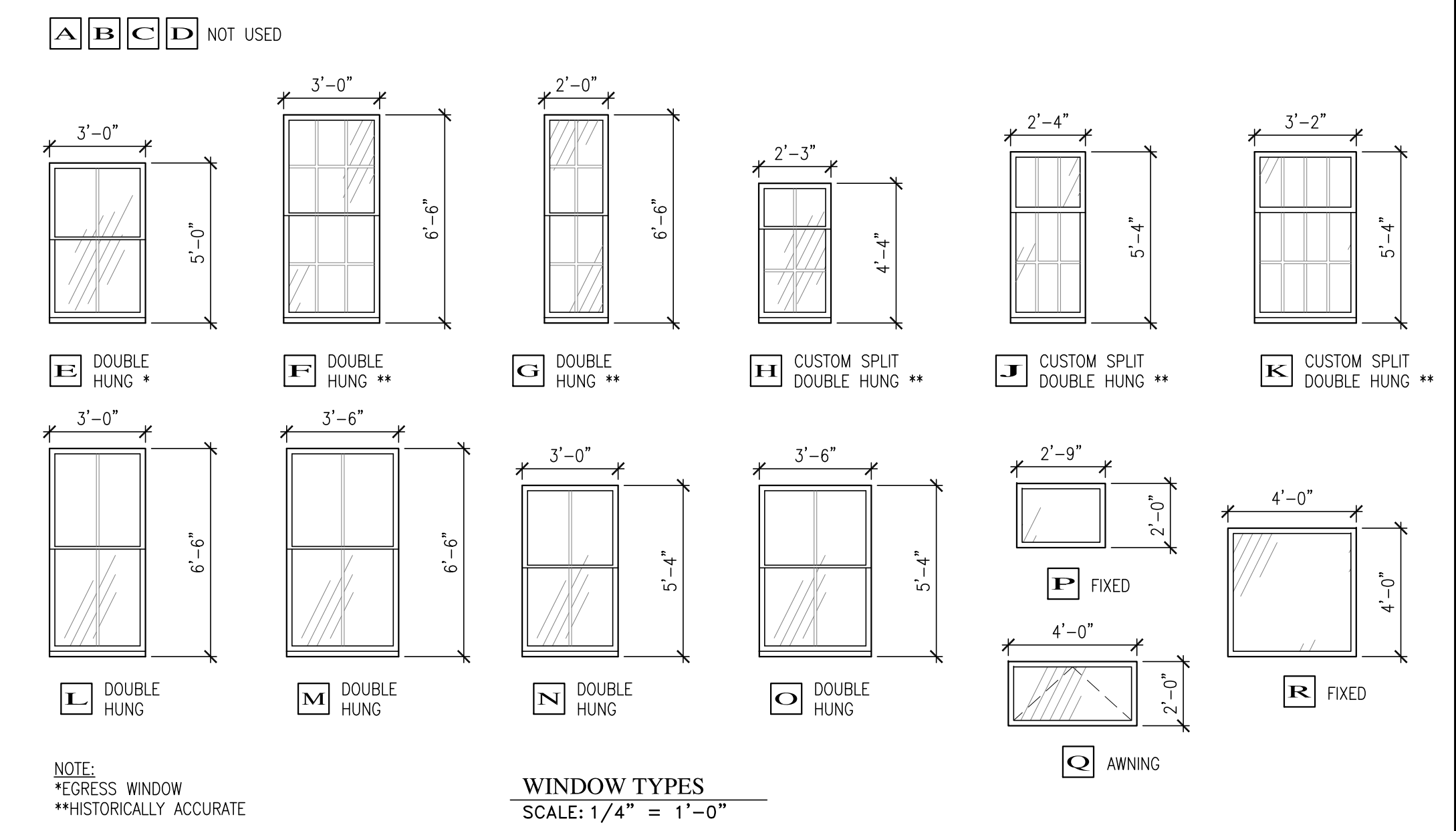
09-27-16



MATERIAL LEGEND:

CB	1x6 'HARDIE' CORNER BOARDS -COLOR: DORIAN GREY SW7017	RM	MEMBRANE ROOFING SYSTEM. REFER TO PENTHOUSE PLAN
FC	1x4 ON 1x10 'HARDIE' FASCIA w/ CONT. PREFINISHED ALUM. FLASHING -COLOR: DORIAN GRAY SW7017	RS	ASPHALT ROOFING SYSTEM. REFER TO PENTHOUSE PLAN
GR	+42" WHITE 'PREMIER' COMPOSITE RAILING SYSTEM	S1	'HARDIE PANEL' SYSTEM w/ ALUM. TRIM OVER 'TYPAR' BUILDING WRAP, TYP. -COLOR: DORIAN GREY SW 7017
GT	6" PREFINISHED ALUM. GUTTER SYSTEM ON ALUM. CLAD 1x8 FACIA -COLOR: BROWN GUTTER w/ BROWN DOWNSPOUTS	S2	6" T/W 'HARDIE PLANK' LAP SIDING OVER 'TYPAR' BUILDING WRAP, TYP. -COLOR: DORIAN GREY SW 7017
PC	1x6 ON 1x10 TRIM BD. w/ PREFINISHED ALUM. CAP -COLOR:	SW	6" TALL SCREEN WALL/FENCE w/ 1x6 HORIZ. HARDIE BOARDS ALTERNATING Ea. SIDE -COLOR: GREY
T4	4" HARDIE TRIM -COLOR: AUNT BETTY'S CHINA	XB	EXISTING BRICK VENEER, TO REMAIN
T8	8" HARDIE TRIM -COLOR: AUNT BETTY'S CHINA		

EXTERIOR WINDOW TYPES:
'PELLA' ARCHITECTURAL SERIES: METAL CLAD WOOD WINDOWS - LOW-E w/ ARGON, INSUL. & GRILLES BETWEEN GLASS (GBG), AS SHOWN



09-27-16