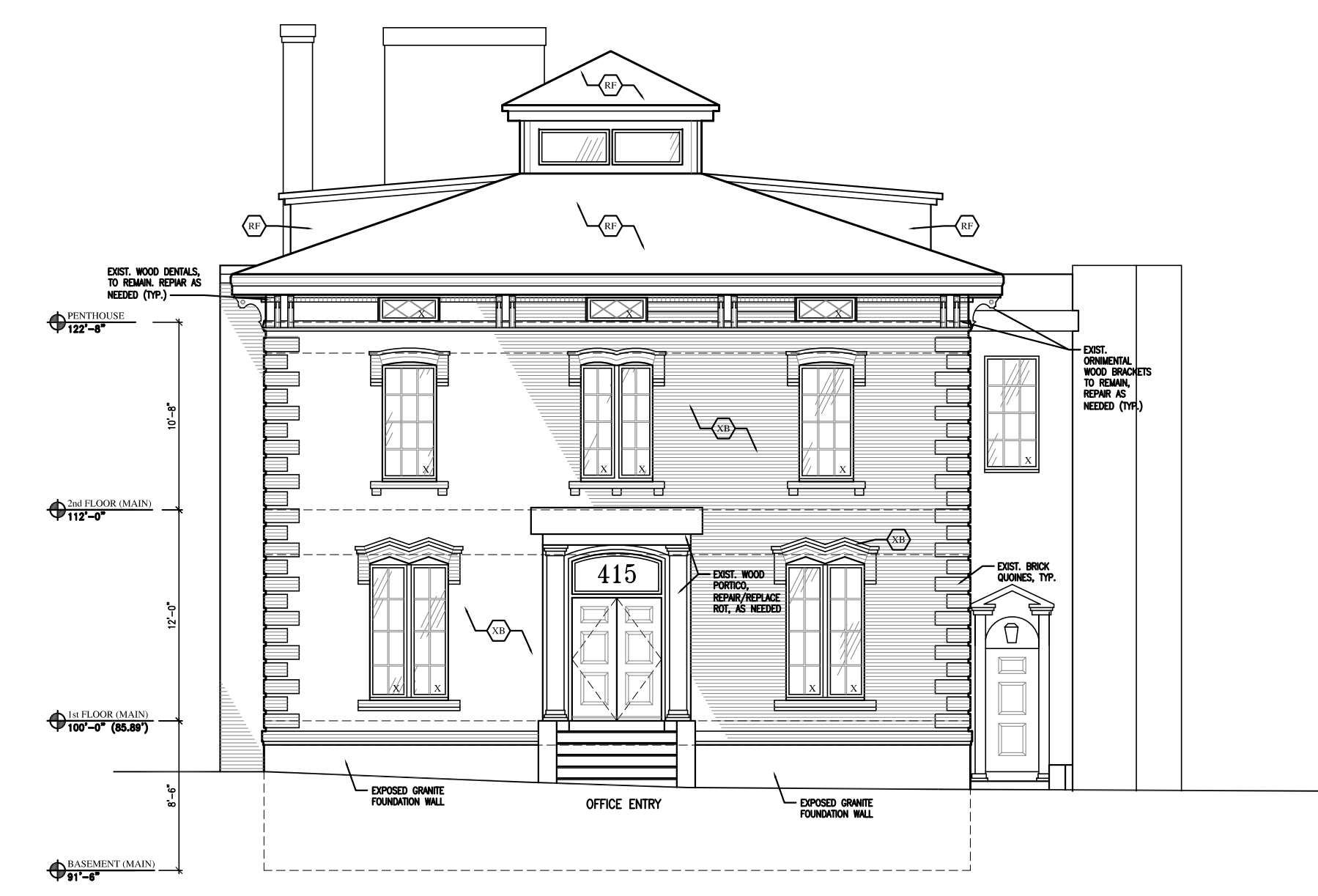
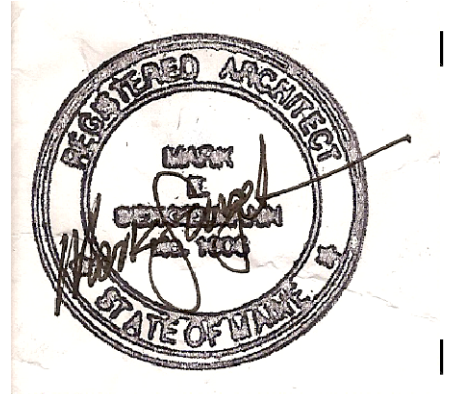
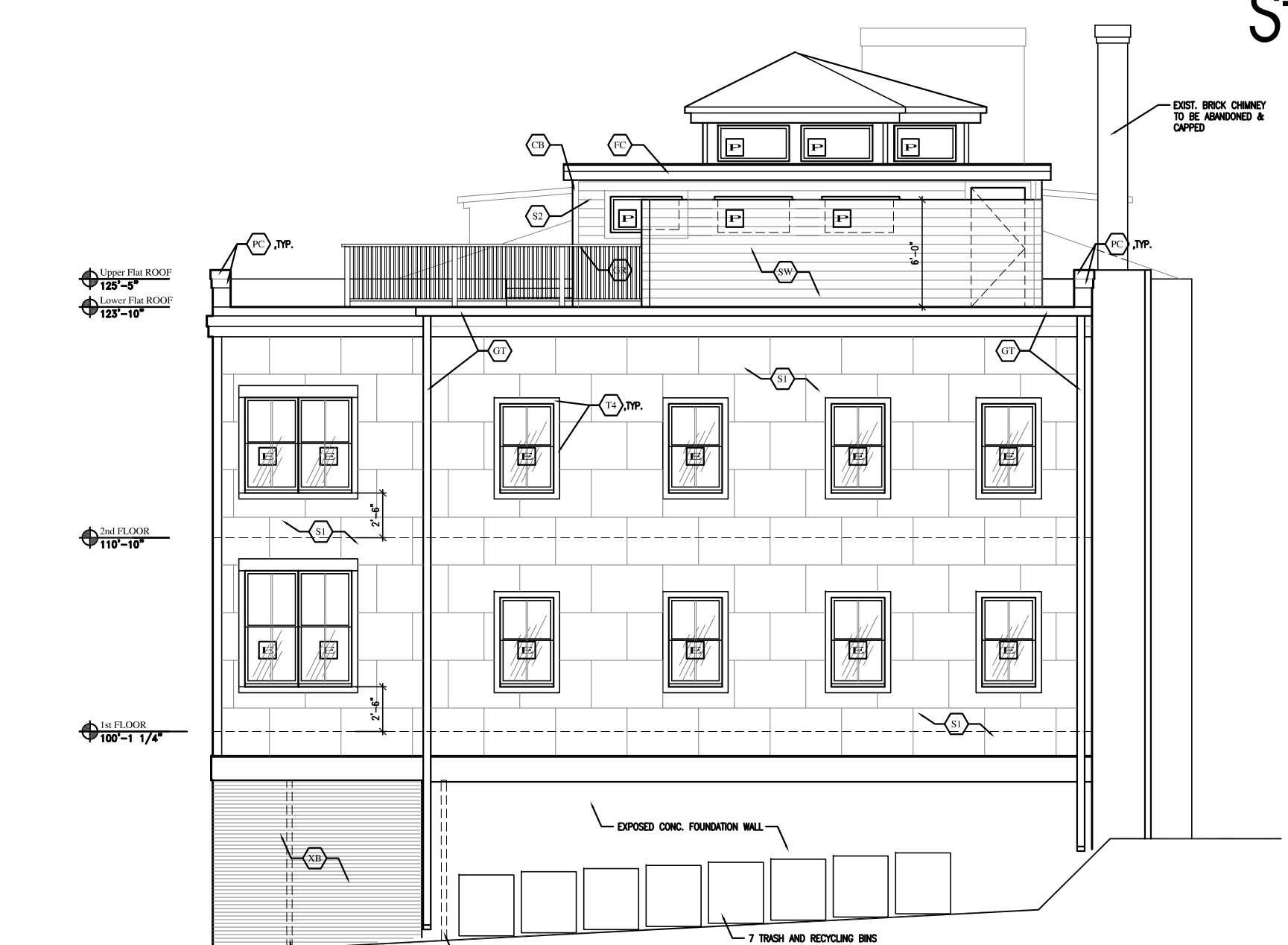


ALPHAarchitects  
 17 CHESTNUT STREET  
 PORTLAND, ME 04101  
 PHONE: 207.761.9500  
 FAX: 207.761.9595  
 design@alpharchitects.com

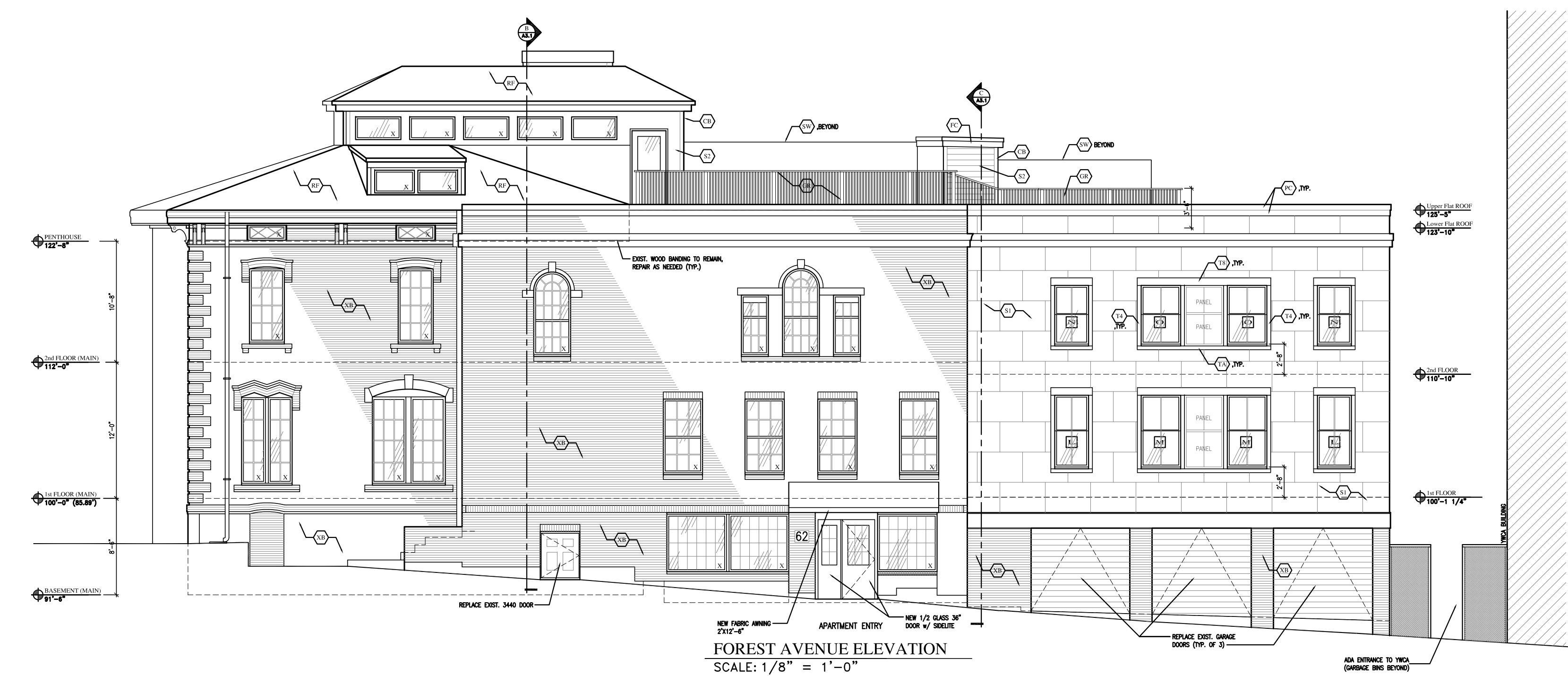
© COPYRIGHT  
 Reuse or reproduction of the contents of this document is not permitted without written permission of ALPHA ARCHITECTS



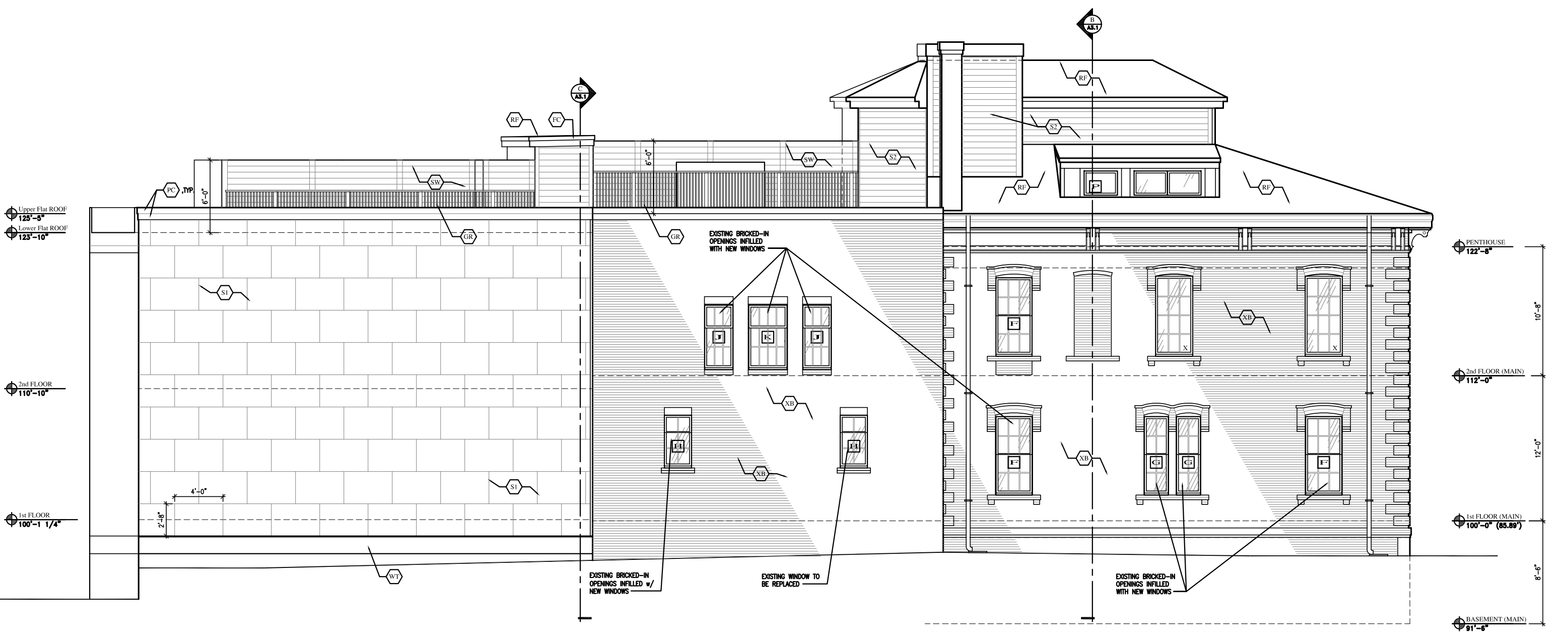
CUMBERLAND AVENUE ELEVATION  
 SCALE: 1/8" = 1'-0"



ALLEY ELEVATION  
 SCALE: 1/8" = 1'-0"



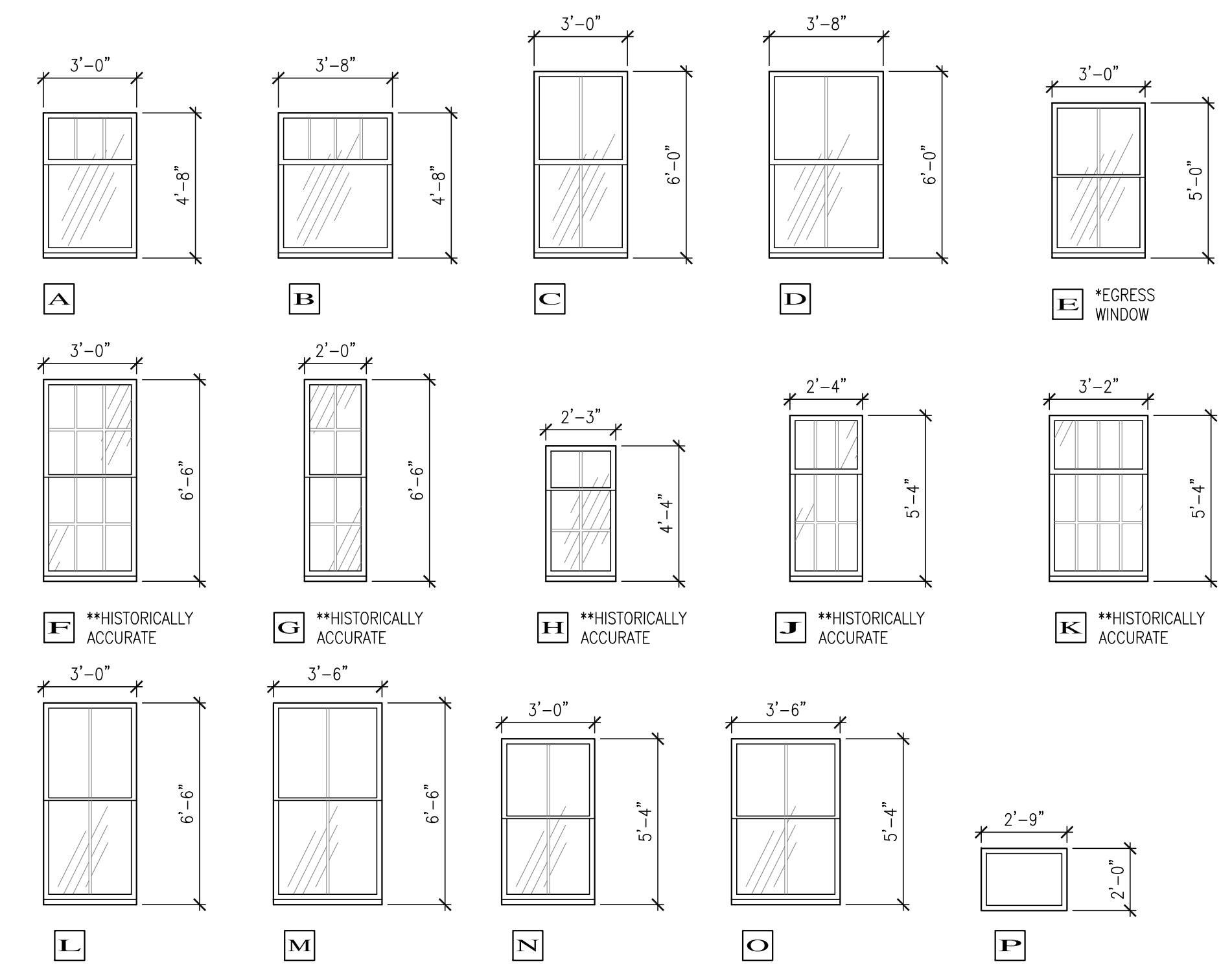
FOREST AVENUE ELEVATION  
 SCALE: 1/8" = 1'-0"



SIDE ELEVATION  
 SCALE: 1/8" = 1'-0"

**MATERIAL LEGEND:**

CB	1x6 'HARDI' CORNER BOARDS -COLOR:	RF	MEMBRANE ROOFING SYSTEM. REFER TO PENTHOUSE PLAN
FC	1x4 ON 1x10 'HARDI' FASCIA w/ CONT. PREFINISHED ALUM. FLASHING -COLOR:	S1	48" x 32" 'HARDIE' REVEAL PANEL SYSTEM w/ ALUM. TRIM OVER 'TYPAR' BUILDING WRAP, TYP. -COLOR: WITH ALUM. FRY REGLETS
GR	+42" WHITE 'PREMIER' COMPOSITE RAILING SYSTEM	S2	6" T1W 'HARDI' SIDING OVER 'TYPAR' BUILDING WRAP, TYP. -COLOR:
GT	6" PREFINISHED ALUM. GUTTER SYSTEM ON ALUM. CLAD 1x8 FACIA -COLOR: BROWN GUTTER w/ BROWN DOWNSPOUTS	SW	6" TALL SCREEN WALL/FENCE w/ 1x6 HORIZ. HARDI BOARDS ALTERNATING Ea. SIDE -COLOR: TBD
PC	1x6 ON 1x10 TRIM BD. w/ PREFINISHED ALUM. CAP -COLOR:	XB	EXISTING BRICK VENEER, TO REMAIN
T4	4" HARDI TRIM		
T8	8" HARDI TRIM		



WINDOW TYPES  
 SCALE: 1/4" = 1'-0"

**Station 415**  
 415 Cumberland Avenue  
 Portland, ME. 04101

JOB: 16110

ISSUE DATE	
PRELIM	01-17-16
SFMO	-
CD's	-
REV. 1	-
REV. 2	-
PRINT	07-20-16

EXTERIOR ELEVATIONS  
**A2.1**

07-20-16