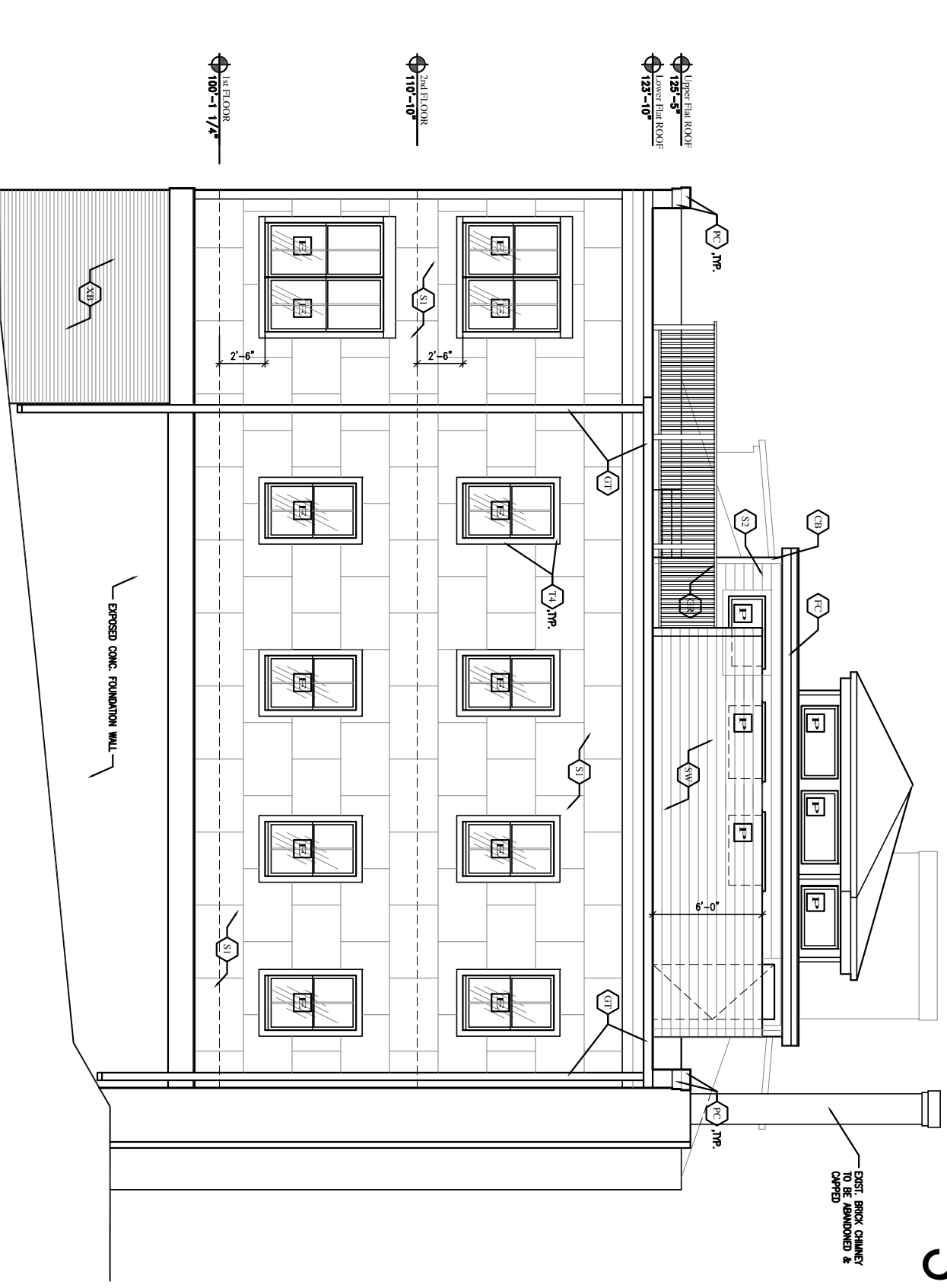
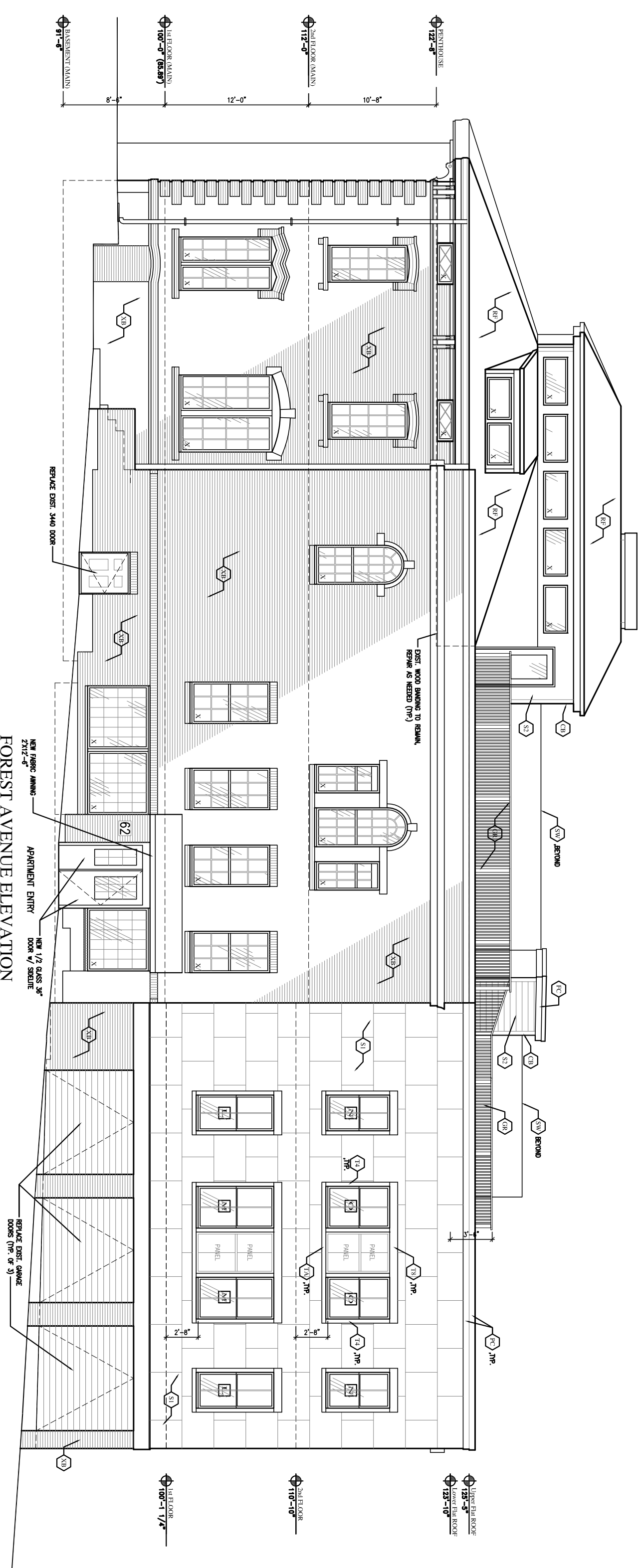


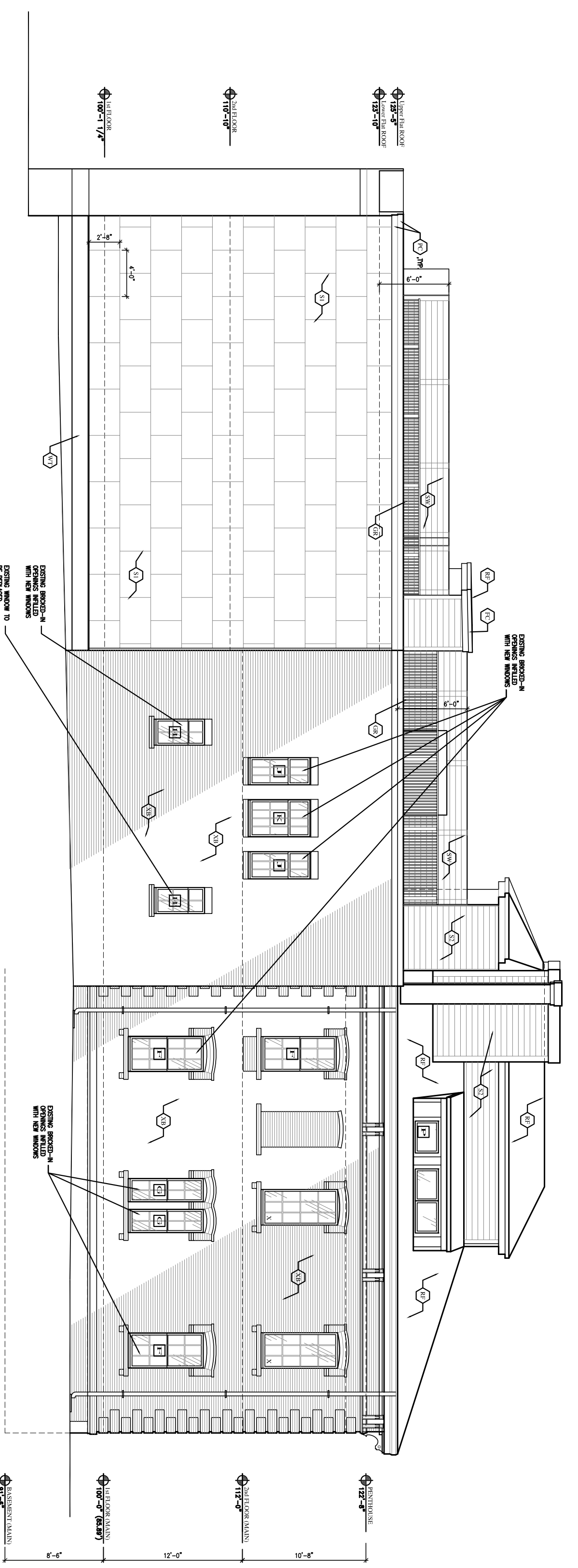
CUMBERLAND AVENUE ELEVATION  
SCALE: 1/8" = 1'-0"



ALLEY ELEVATION  
SCALE: 1/8" = 1'-0"



FOREST AVENUE ELEVATION  
SCALE: 1/8" = 1'-0"



SIDE ELEVATION  
SCALE: 1/8" = 1'-0"

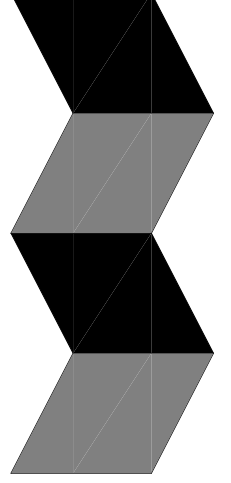
**MATERIAL LEGEND:**

(CB) 1/8" HARD" CORNER BOARDS -COLOR-	(RI) MERRIMAC ROOFING SYSTEM REFER TO PENHOUSE PLAN
(FC) 1/4" ON 1X10 "HARD" FASCIA w/ CONT. PREFINISHED ALUM. FLASHING -COLOR-	(SI) 48" x 30" HARGRE ARCEL PANEL SYSTEM w/ ALUM. TRIM OVER TYPAR BUILDING WRAP. TYP. -COLOR- WITH ALUM. FRM REGLES
(CR) #42" WHITE PREMIER COMPOSITE RAILING SYSTEM	(S2) 6" TW "HARD" SILING OVER TYPAR BUILDING WRAP. TYP.
(CT) 6" PREFINISHED ALUM. GUTTER SYSTEM ON ALUM. CLAD 1X8 FASCIA -COLOR- BROWN GUTTER w/ BROWN DOWNSPOUTS	(SW) 6" TALL SCREEN WALL/FENCE w/ 1/4" HORIZ. HARD BRICKS ALTERNATING ED. SIDE -COLOR- TBD
(TC) 1/4" ON 1X10 TRIM BO. w/ PREFINISHED ALUM. CAP -COLOR-	(XB) EXISTING BRICK VENERE. TO REMAIN
(TD) 4" HARD TRIM	
(TS) 8" HARD TRIM	

**WINDOW TYPES**  
SCALE: 1/4" = 1'-0"

(A) 3'-0" x 9'-9"	(B) 3'-0" x 9'-9"	(C) 3'-0" x 6'-0"	(D) 3'-8" x 6'-0"	(E) 3'-0" x 5'-0"
(F) 3'-0" x 9'-9"	(G) 2'-0" x 9'-9"	(H) 2'-3" x 4'-4"	(I) 2'-4" x 5'-4"	(J) 2'-4" x 5'-4"
(L) 3'-0" x 9'-9"	(M) 3'-6" x 9'-9"	(N) 3'-0" x 5'-4"	(O) 3'-6" x 4'-5"	(P) 2'-9" x 2'-0"

ALL HISTORICALLY ACCURATE



ALPHAarchitects  
17 CHESTNUT STREET  
PORTLAND, ME 04101  
PHONE: 207.761.9500  
FAX: 207.761.9595  
design@alphaarchitects.com

**COPYRIGHT**  
Release or reproduction of the contents of  
this document is not permitted without  
written permission of ALPHA-ARCHITECTS



# Station 415

415 Cumberland Avenue  
Portland, ME. 04101

JOB: 16110

ISSUE DATE	
PRELIM	01-17-16
SFWO	-
CDS	-
REV. 1	-
REV. 2	-
PRINT	06-08-16

EXTERIOR  
ELEVATIONS  
**A2.1**