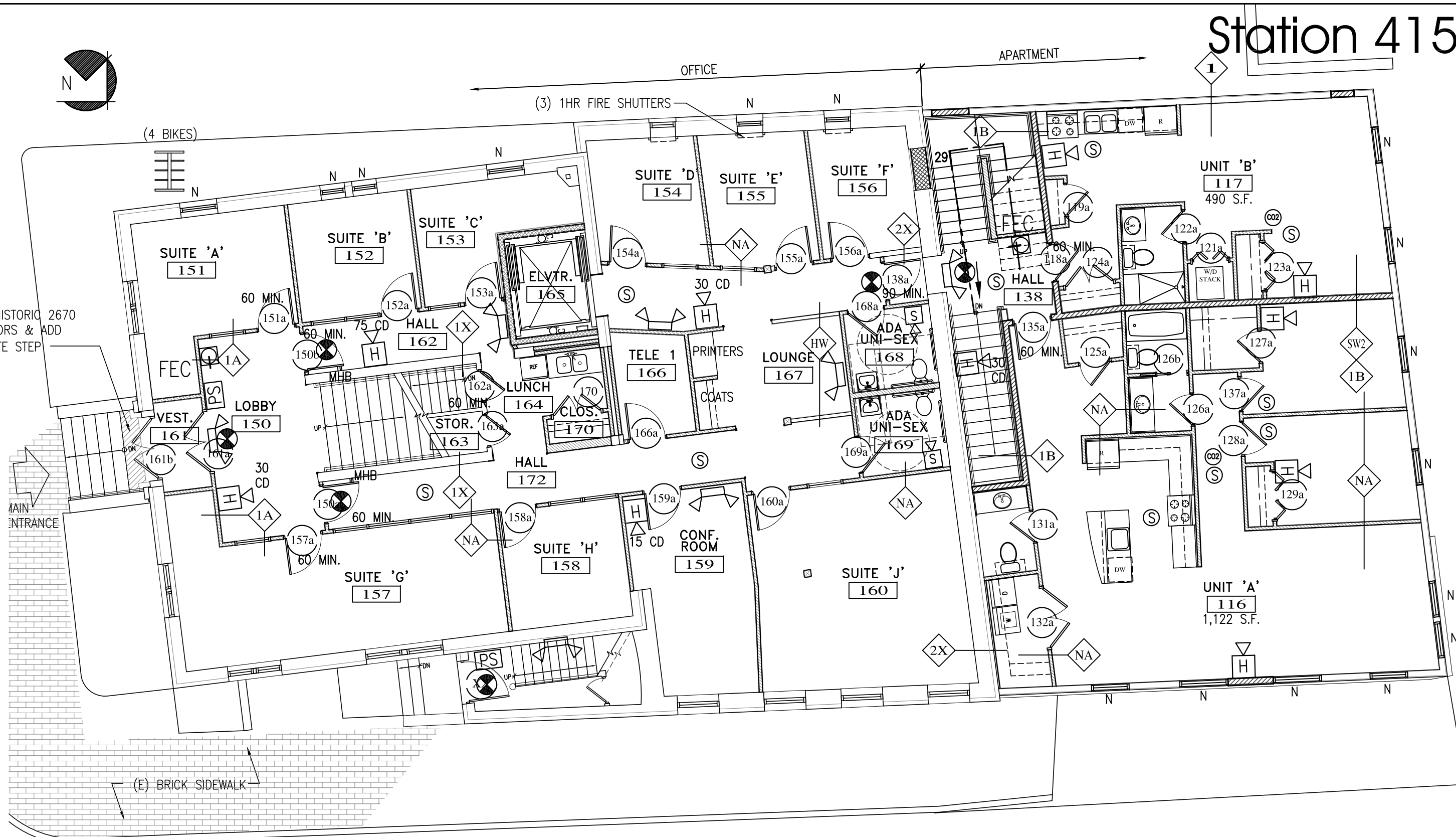


MEZZANINE PLAN
SCALE: 1/8" = 1'-0"
901sf Gross Area



FIRST FLOOR PLAN
SCALE: 1/8" = 1'-0"
4928sf Gross Area

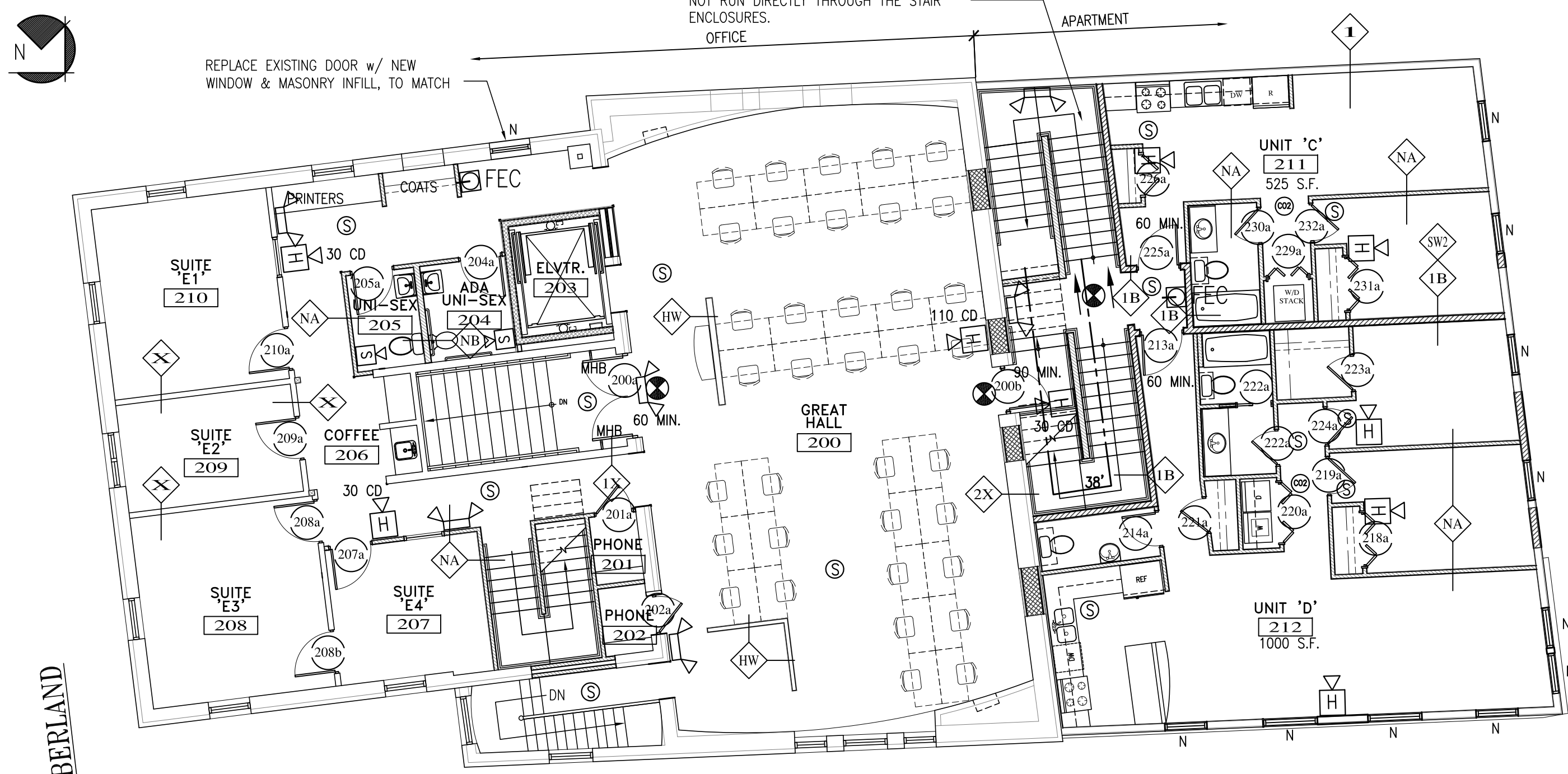
FIRE PROTECTION LEGEND

FE	FIRE EXTINGUISHER 10# ABC	⊙	SMOKE DETECTOR (CEILING)
FE-K	FIRE EXTINGUISHER 10# K	⊕	CO2 DETECTOR (CEILING)
FEC	FIRE EXTINGUISHER CABINET 10# ABC	⊕	HEAT DETECTOR (CEILING)
FEC-K	FIRE EXTINGUISHER CABINET 10# K	⊕	COMBINATION LIGHT/EXHAUST FAN
⊙	EXIT LIGHT	FAP	FIRE ALARM MASTER CONTROL PANEL
⊙	STROBE ONLY WITH CANDELLA RATING AS NOTED	PS	PULL STATION
⊙	HORN STROBE WITH CANDELLA RATING AS NOTED	⊕	EXTERIOR EGRESS LIGHT
⊕	DUAL EMERGENCY LIGHT	N.A.E.	'NOT AN EXIT' SIGN W RAISED BRAILLE
⊕	SINGLE EMERGENCY LIGHT	V.A.P.	VAN ACCESSIBLE
		MHB	DOOR MAGNETIC HOLD-BACK
		⊕	4' CLEAR PLASTIC CORNER GUARD

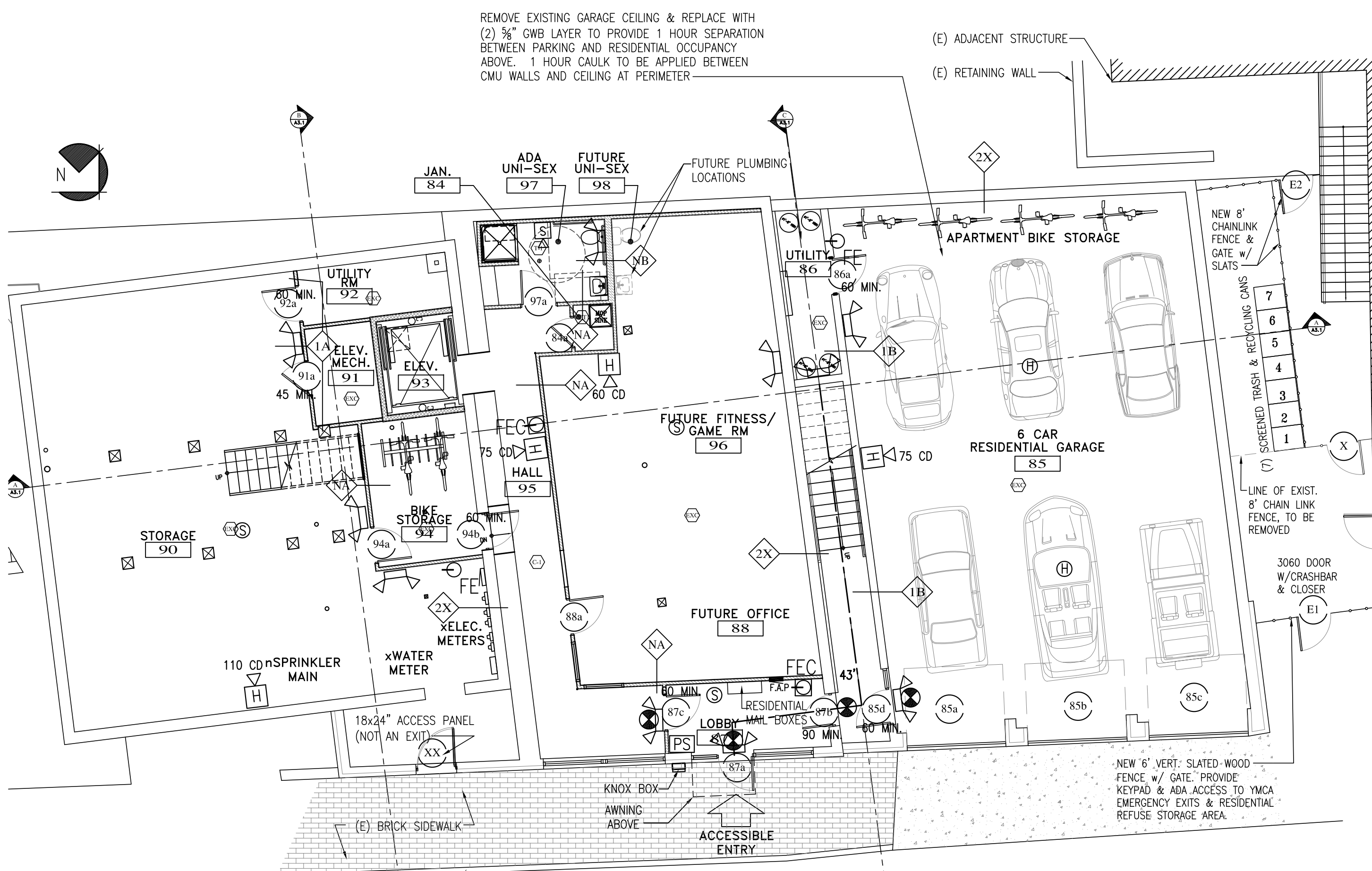
NOTES:

- ALL EMERGENCY LIGHTS MUST BE POWERED BY BATTERY BACK-UP OR GENERATOR PER NFPA 101.
- HVAC PER NFPA 90A
- EMERGENCY LIGHTS TO AVERAGE 1 FOOTCANDLE AND .1 FOOTCANDLE MINIMUM.

MEP CAN ONLY SERVE STAIR ENCLOSURES AND SHALL NOT RUN DIRECTLY THROUGH THE STAIR ENCLOSURES.. OFFICE.



SECOND FLOOR PLAN
SCALE: 1/8" = 1'-0"
4928sf Gross Area



LOWER LEVEL PLAN
SCALE: 1/8" = 1'-0"
4936sf Gross Area

ALPHAarchitects
17 CHESTNUT STREET
PORTLAND, ME 04101
PHONE: 207.761.9500
FAX: 207.761.9595
design@alphaarchitects.com

COPYRIGHT
Reuse or reproduction of the contents of this document is not permitted without written permission of ALPHA ARCHITECTS



Station 415

415 Cumberland Avenue
Portland, ME. 04101

JOB: 16110

ISSUE DATE

PERMIT	10-04-16
SFMO	09-29-16
CD's	-
REV. 4	11-17-16
REV. 5	01-09-17
PRINT	11-17-16

LIFE SAFETY
BASEMENT, 1st FL., 2nd FL.
& PENTHOUSE PLANS

LS1.1

01-09-17