

ALPHAarchitects  
 17 CHESTNUT STREET  
 PORTLAND, ME 04101  
 PHONE: 207.761.9500  
 FAX: 207.761.9595  
 design@alphaarchitects.com

**© COPYRIGHT**  
 Reuse or reproduction of the contents of this document is not permitted without written permission of ALPHA ARCHITECTS

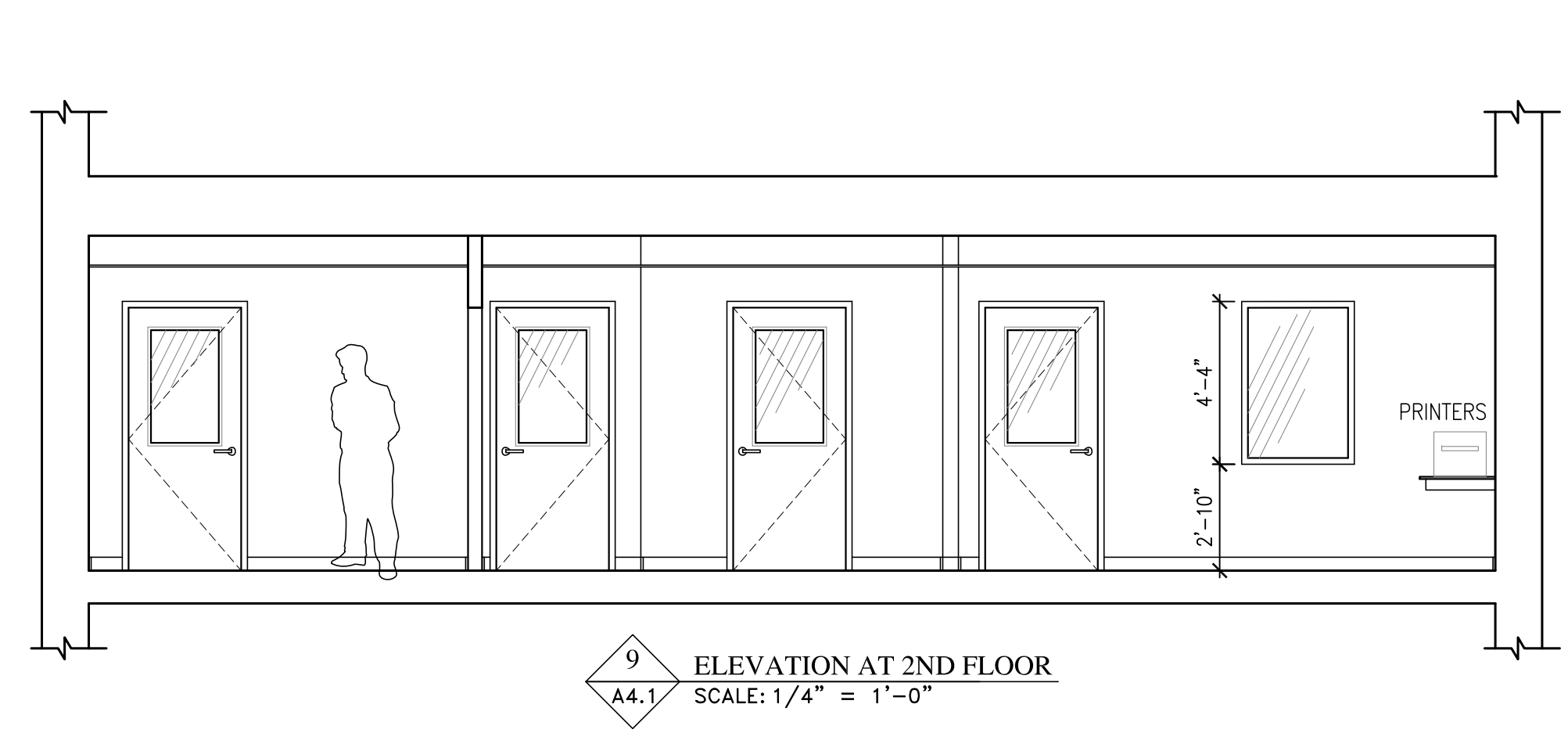


**Station 415**  
 415 Cumberland Avenue  
 Portland, ME. 04101

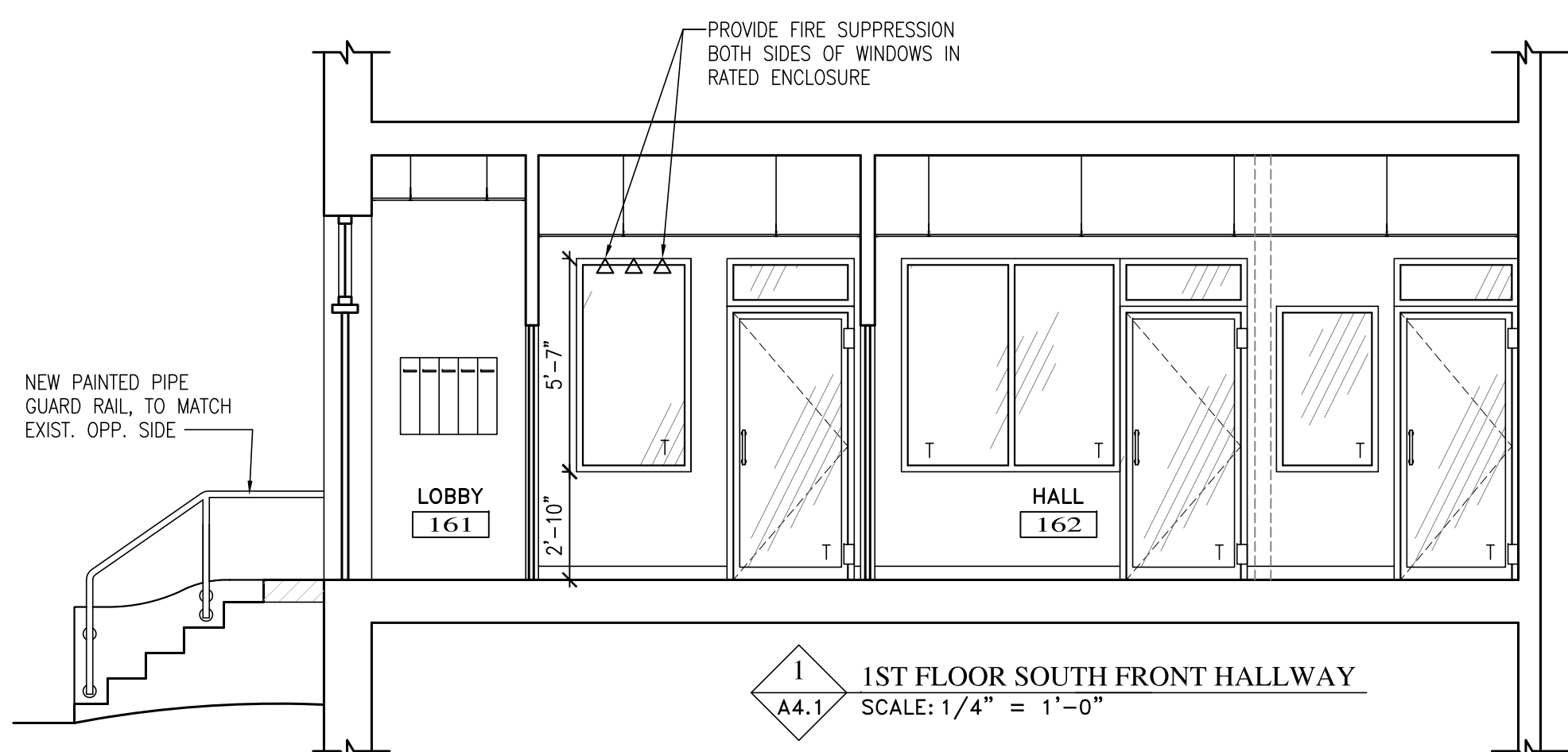
JOB: 16110

ISSUE DATE	
PERMIT	10-04-16
SFMO	09-29-16
CD's	-
REV. 4	11-17-16
REV. 5	01-09-17
PRINT	11-17-16

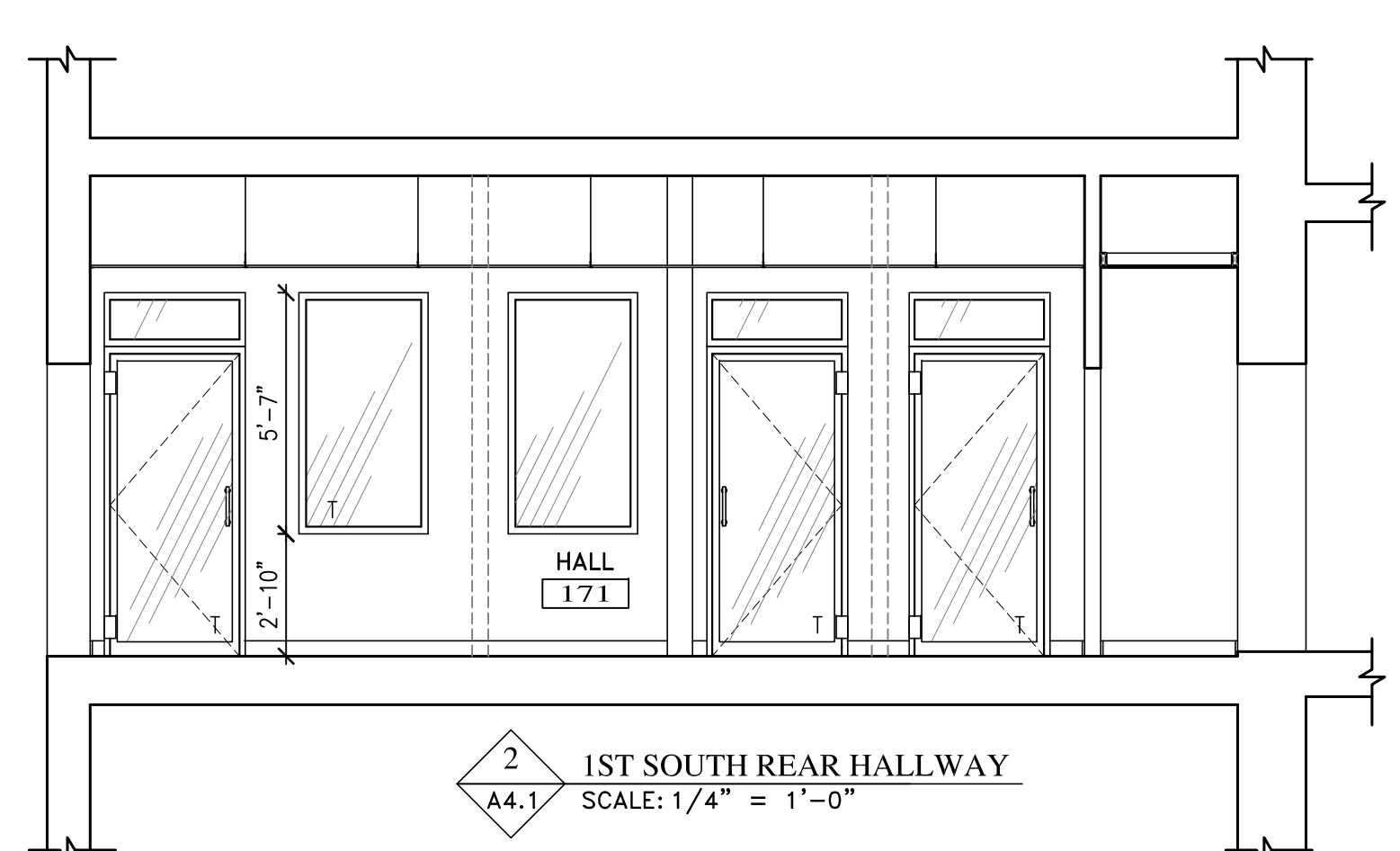
INTERIOR ELEVATIONS  
**A4.1**



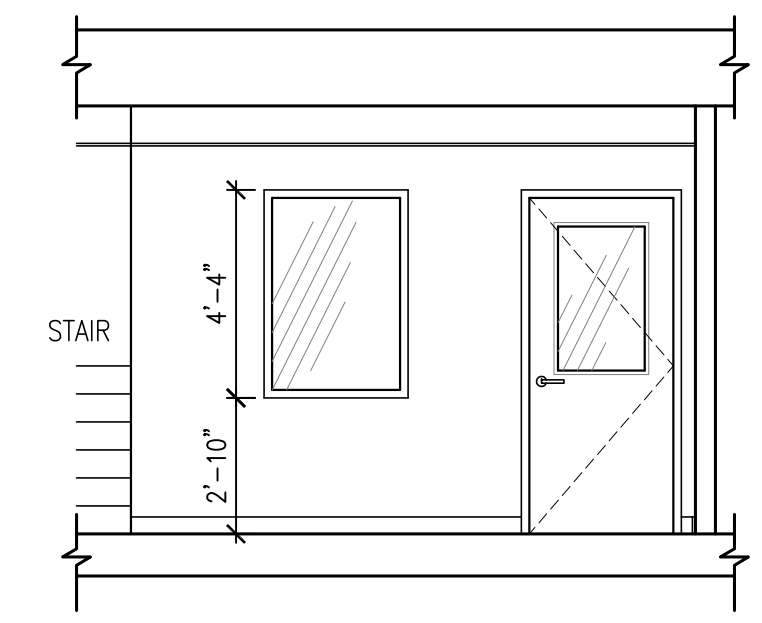
9 ELEVATION AT 2ND FLOOR  
 A4.1 SCALE: 1/4" = 1'-0"



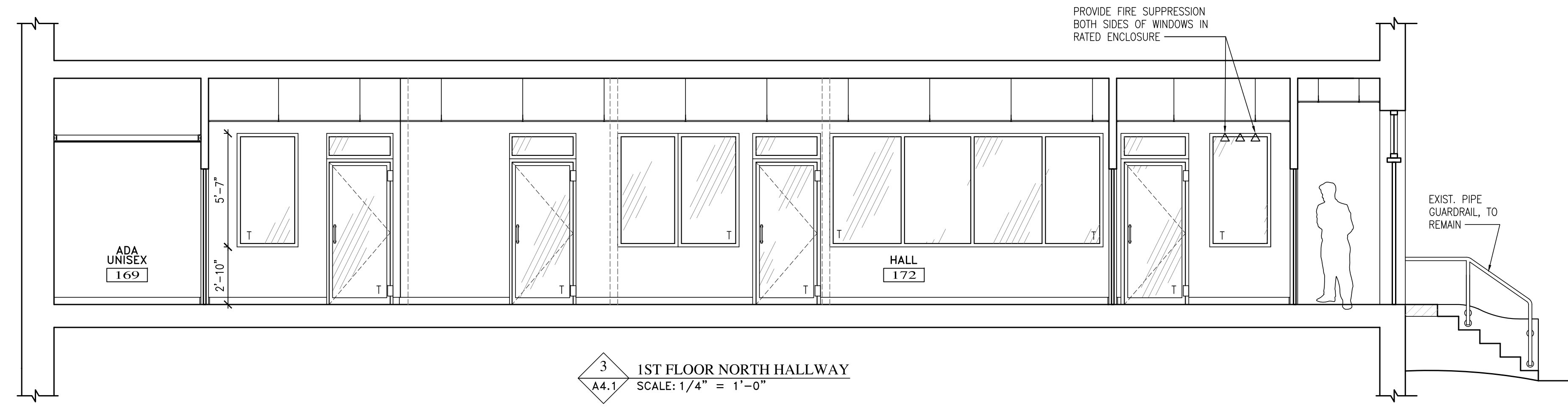
1 1ST FLOOR SOUTH FRONT HALLWAY  
 A4.1 SCALE: 1/4" = 1'-0"



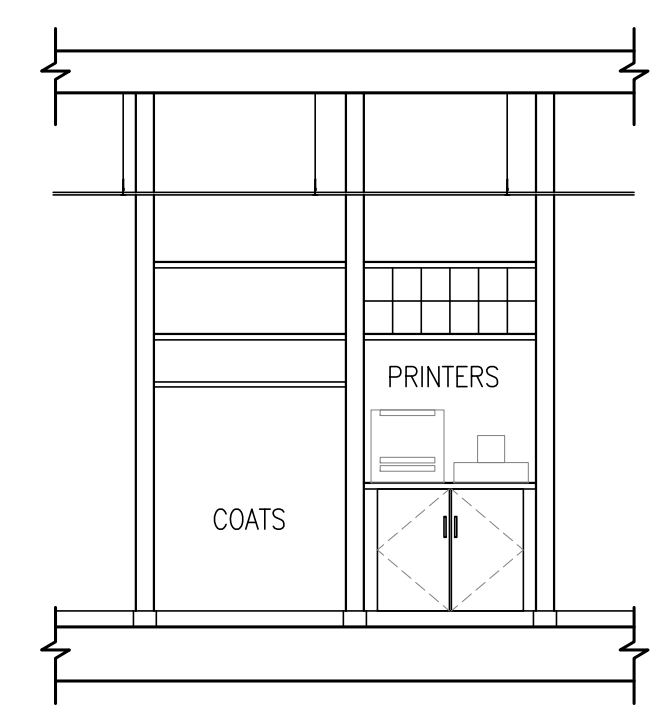
2 1ST SOUTH REAR HALLWAY  
 A4.1 SCALE: 1/4" = 1'-0"



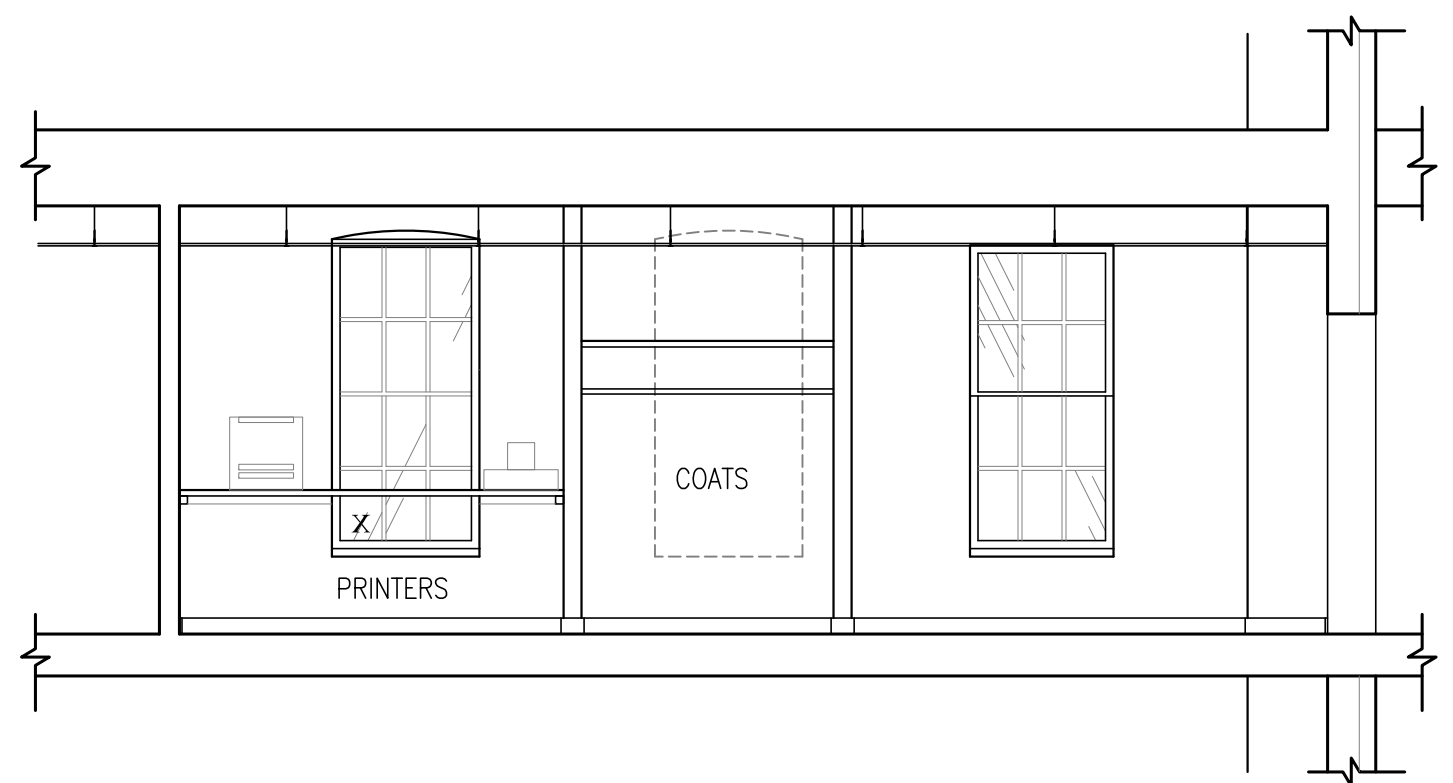
8 ELEVATION AT 2ND FLOOR  
 A4.1 SCALE: 1/4" = 1'-0"



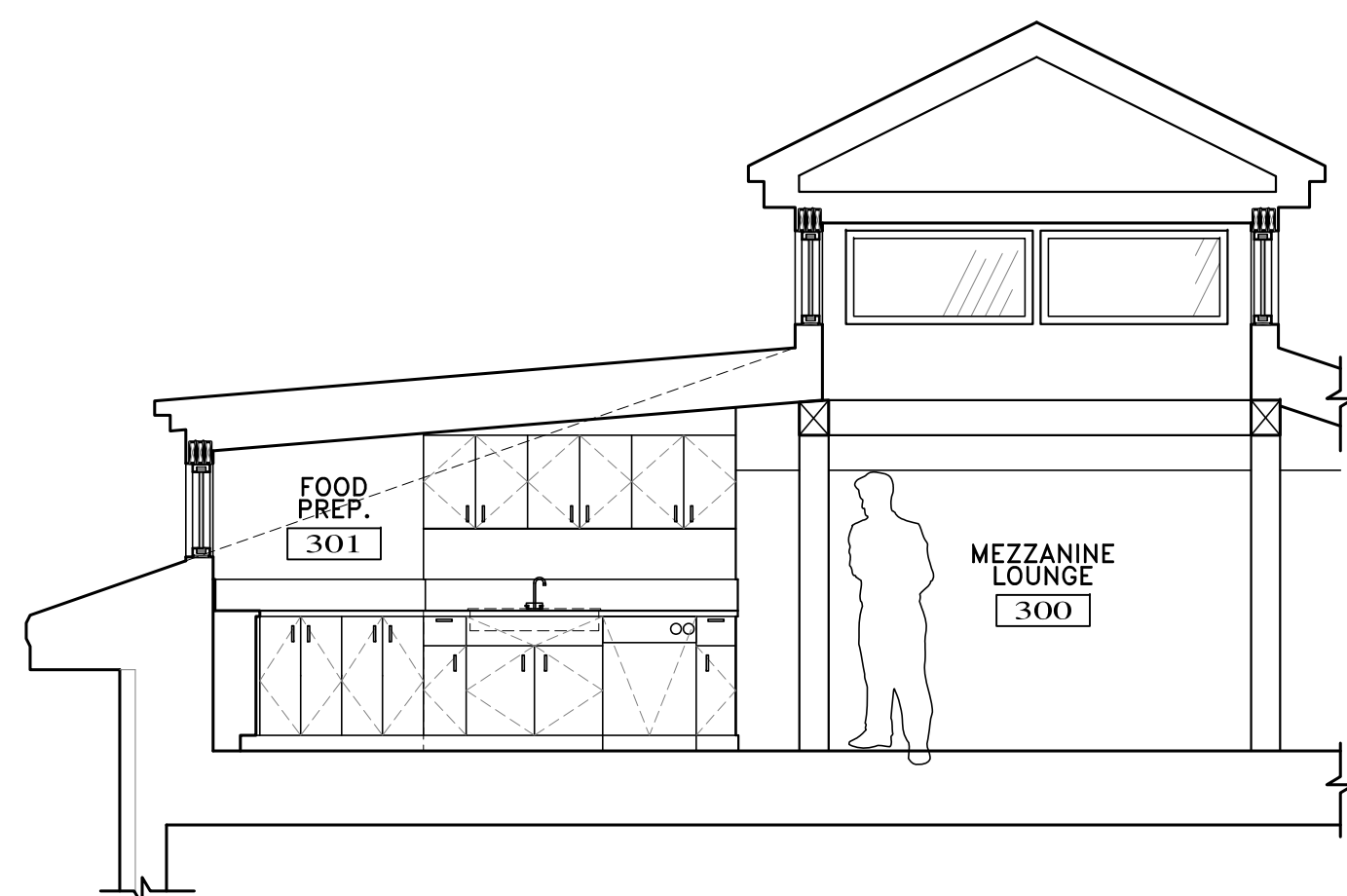
3 1ST FLOOR NORTH HALLWAY  
 A4.1 SCALE: 1/4" = 1'-0"



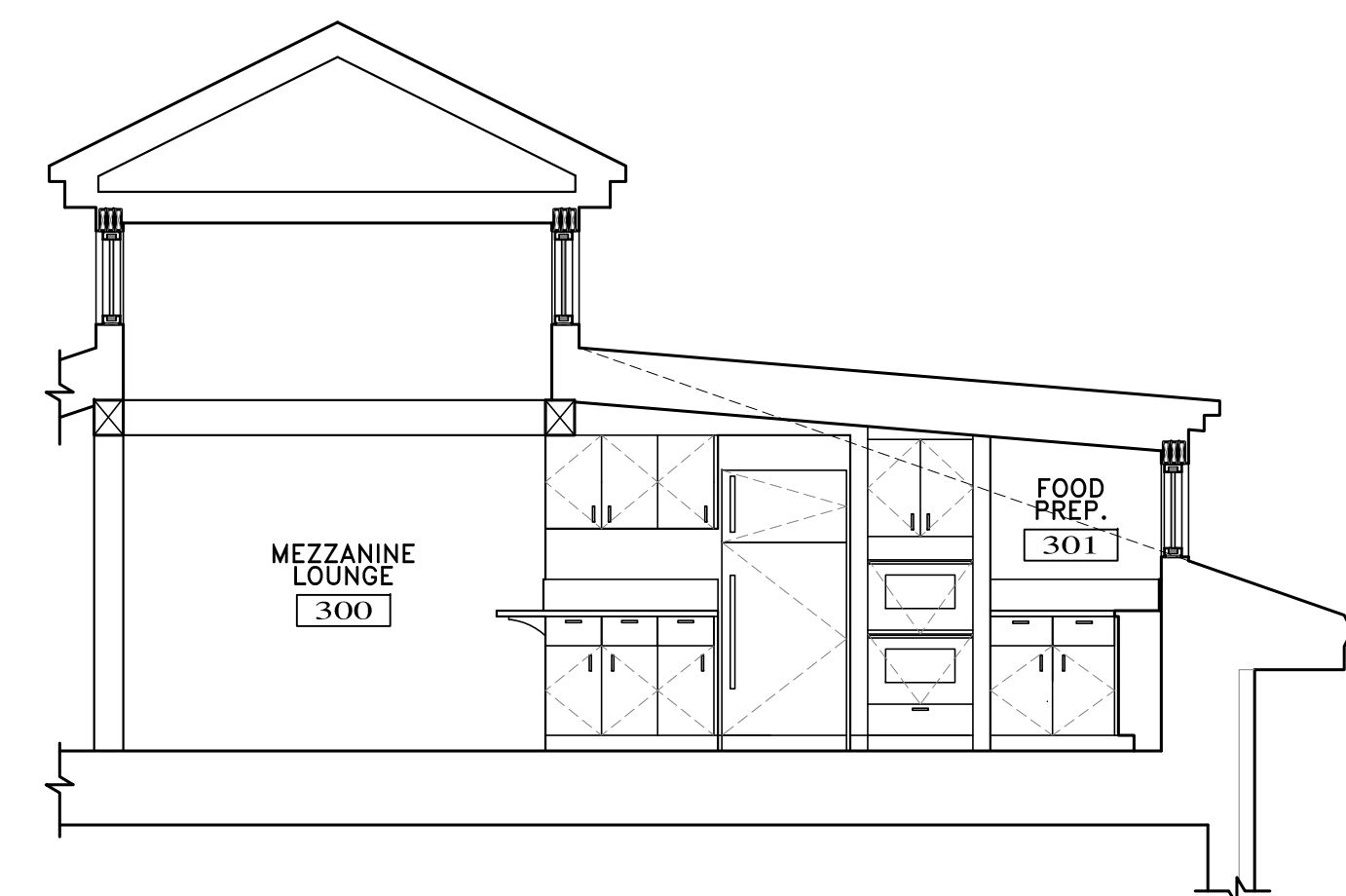
4 1ST FLOOR AT NOOK  
 A4.1 SCALE: 1/4" = 1'-0"



5 2ND FLOOR NORTH HALLWAY  
 A4.1 SCALE: 1/4" = 1'-0"



6 ELEVATION AT FOOD PREP  
 A4.1 SCALE: 1/4" = 1'-0"



7 ELEVATION AT FOOD PREP  
 A4.1 SCALE: 1/4" = 1'-0"

01-09-17