

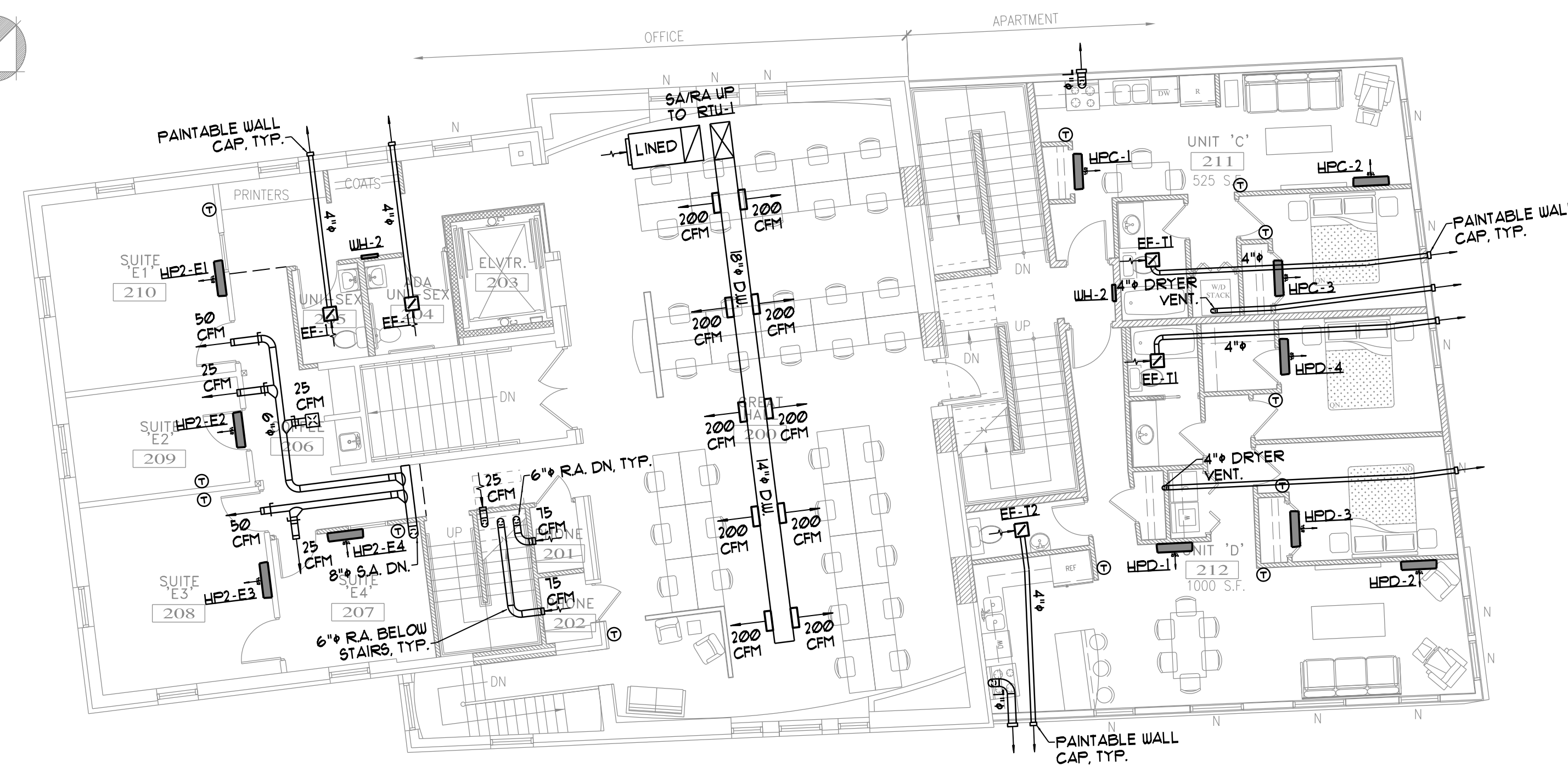
MEZZANINE MECHANICAL PLAN
SCALE - 1/8"=1'-0"

MECHANICAL NOTES

1. INSTALL DAMPERS IN ACCESSIBLE LOCATIONS OR PROVIDE ACCESS PANELS.
2. REFER TO REFRIGERANT SYSTEM SCHEMATICS FOR PIPING CONFIGURATION AND SIZES.
3. REFRIGERANT PIPING BETWEEN INDOOR AND OUTDOOR UNITS SHALL BE FIELD ROUTED WITH CONFIGURATION SIMILAR TO SCHEMATICS, VERIFY FINAL LAYOUT WITH MANUFACTURER.
4. DUCTWORK SHALL BE ROUTED IN FLOOR TRUSS SPACE WHEREVER POSSIBLE.
5. PROVIDE CRD's AND FD's AS REQUIRED AT RATED WALL AND FLOOR PENETRATIONS.

MULTI-SPLIT SYSTEM CONFIGURATIONS

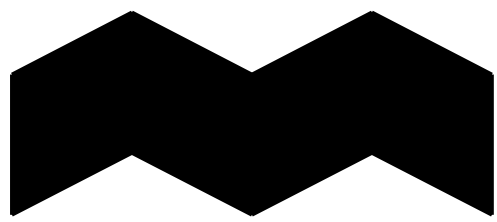
- CU-0 = HFD-1, HFD-2, HFD-3
- CU-1A = HPI-A, HPI-B, HPI-C, HPI-D, HPI-E, HPI-F, HPI-3
- CU-1B = HPI-G1, HPI-G2, HPI-H, HPI-J, HPI-I, HPI-2
- CU-2 = HP2-E1, HP2-E2, HP2-E3, HP2-E4, HP3-1
- CU-A = HPA-1, HPA-2, HPA-3, HPA-4
- CU-B = HPB-1, HPB-2
- CU-C = HPC-1, HPC-2, HPC-3
- CU-D = HPD-1, HPD-2, HPD-3, HPD-4



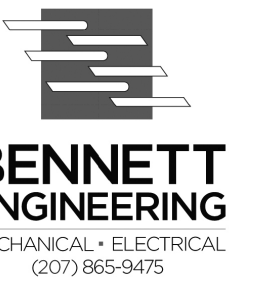
SECOND FLOOR MECHANICAL PLAN
SCALE - 1/8"=1'-0"

MECHANICAL NOTES

1. INSTALL DAMPERS IN ACCESSIBLE LOCATIONS OR PROVIDE ACCESS PANELS.
2. REFER TO REFRIGERANT SYSTEM SCHEMATICS FOR PIPING CONFIGURATION AND SIZES.
3. REFRIGERANT PIPING BETWEEN INDOOR AND OUTDOOR UNITS SHALL BE FIELD ROUTED WITH CONFIGURATION SIMILAR TO SCHEMATICS, VERIFY FINAL LAYOUT WITH MANUFACTURER.
4. DUCTWORK SHALL BE ROUTED IN FLOOR TRUSS SPACE WHEREVER POSSIBLE.
5. PROVIDE CRD's AND FD's AS REQUIRED AT RATED WALL AND FLOOR PENETRATIONS.



ALPHAarchitects
17 CHESTNUT STREET
PORTLAND, ME 04101
PHONE: 207.761.9500
FAX: 207.761.9595
design@alphaarchitects.com



Station 415
415 Cumberland Avenue
Portland, ME. 04101

JOB: 16110

ISSUE DATE	
PRELIM	01-17-16
SFMO	-
CD's	-
REV. 1	-
REV. 2	-
PRINT	09-30-16

SECOND FLOOR &
MEZZANINE
MECHANICAL PLANS

M1.1

FOR PERMIT 09-30-16