

MEZZANINE PLAN
SCALE: 1/8" = 1'-0"
901sf Gross Area

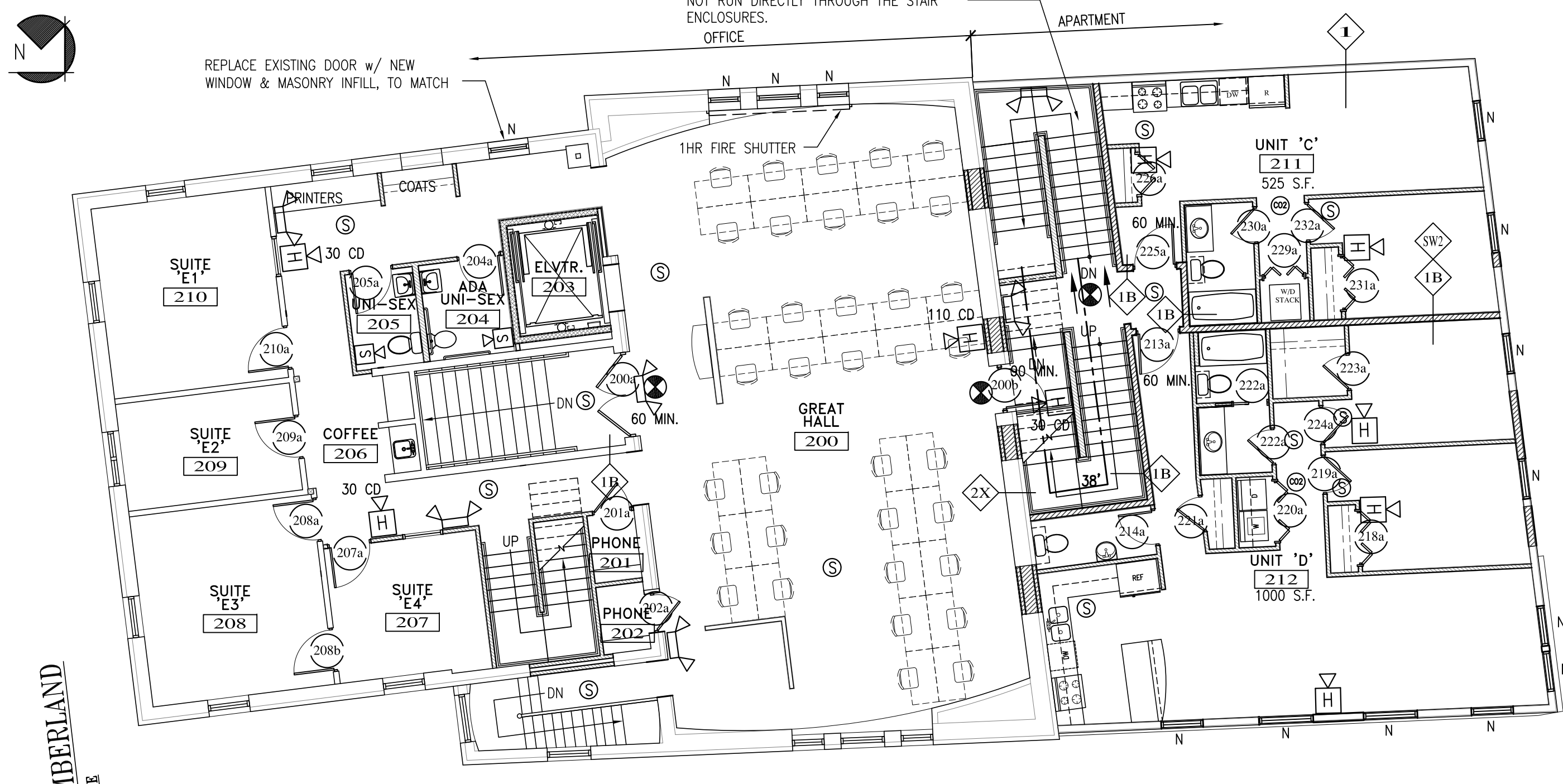
FIRE PROTECTION LEGEND

FE	FIRE EXTINGUISHER 10# ABC	⊙	SMOKE DETECTOR (CEILING)
FE-K	FIRE EXTINGUISHER 10# K	⊗	CO2 DETECTOR (CEILING)
⊕	EXIT LIGHT	⊙	HEAT DETECTOR (CEILING)
⊞	STROBE ONLY WITH CANDELLA RATING AS NOTED	⊞	COMBINATION LIGHT/EXHAUST FAN
⊞	HORN STROBE WITH CANDELLA RATING AS NOTED	FAP	FIRE ALARM MASTER CONTROL PANEL
⊞	DUAL EMERGENCY LIGHT	PS	PULL STATION
⊞	SINGLE EMERGENCY LIGHT	⊕	EXTERIOR EGRESS LIGHT
		N.A.E.	'NOT AN EXIT' SIGN W RAISED BRAILLE
		V.A.P.	VAN ACCESSIBLE

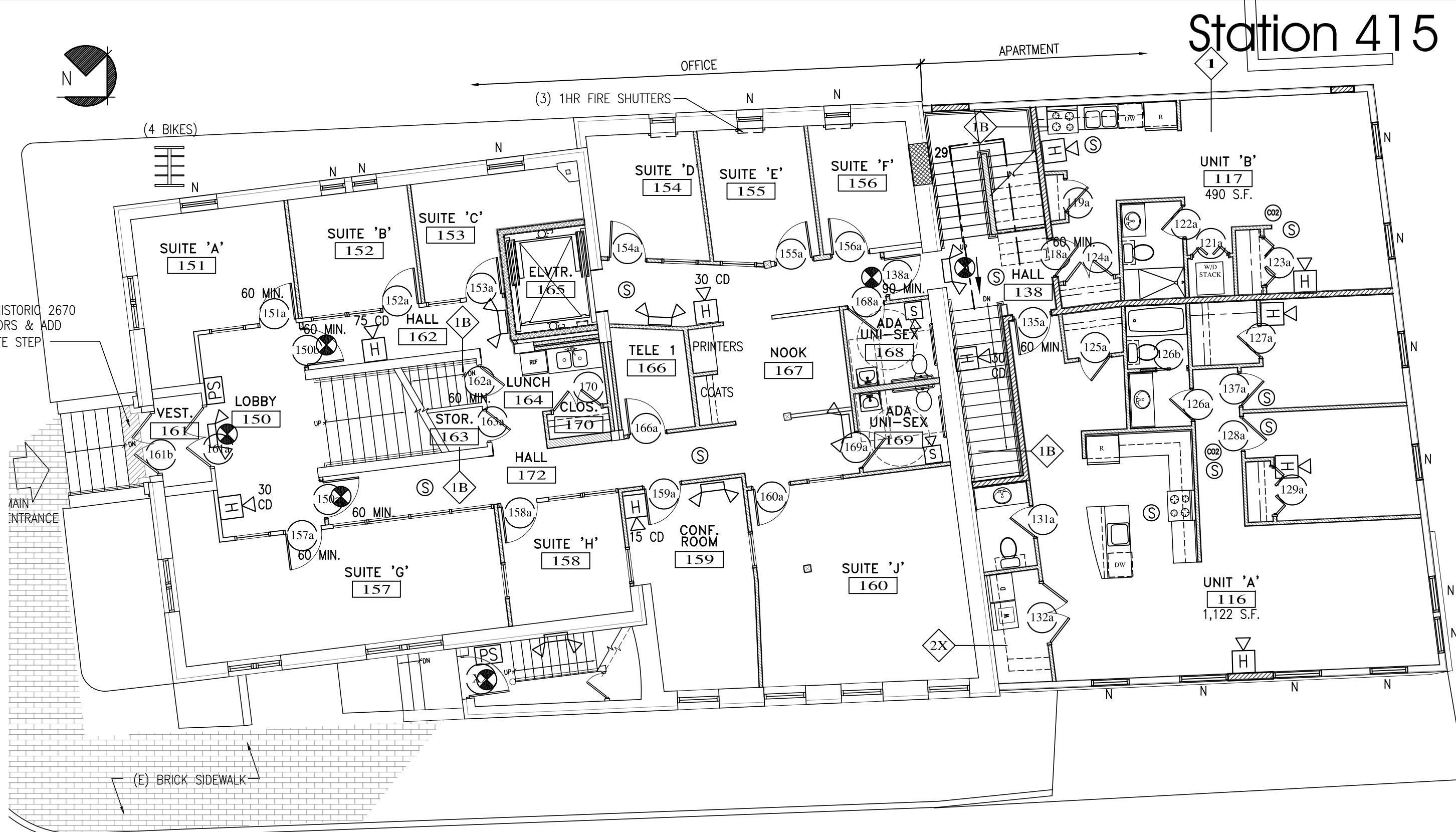
- NOTES:**
- ALL EMERGENCY LIGHTS MUST BE POWERED BY BATTERY BACK-UP OR GENERATOR PER NFPA 101.
 - HVAC PER NFPA 90A
 - EMERGENCY LIGHTS TO AVERAGE 1 FOOTCANDLE AND .1 FOOTCANDLE MINIMUM.

- ABBREVIATIONS:**
- C.O = CASD OPENING
 - CL = DOOR CLOSER
 - WS = WEATHER STRIPPING SYSTEM
 - DB = DEAD BOLT
 - L = ADA LEVER

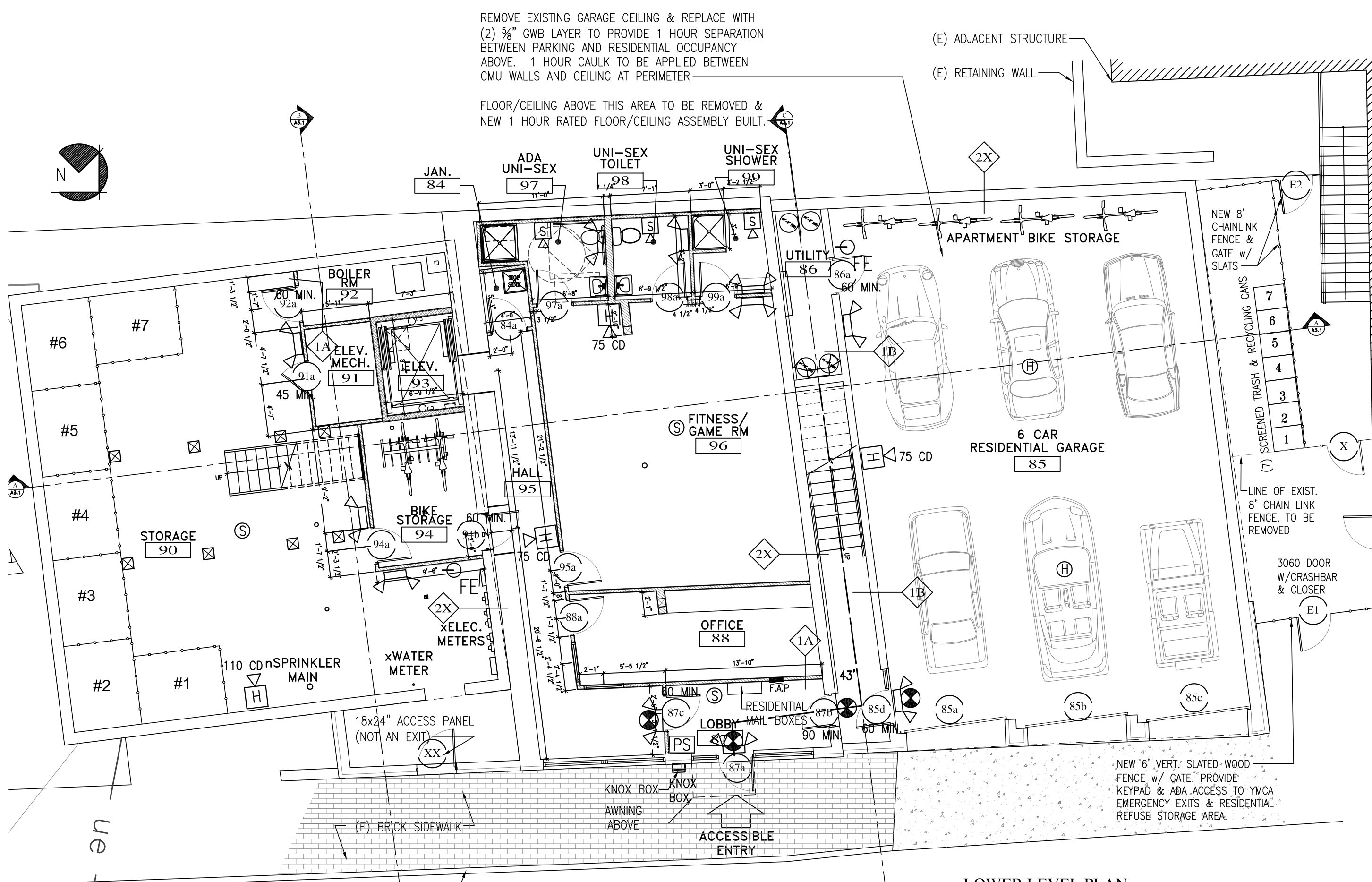
MEP CAN ONLY SERVE STAIR ENCLOSURES AND SHALL NOT RUN DIRECTLY THROUGH THE STAIR ENCLOSURES.. OFFICE.



SECOND FLOOR PLAN
SCALE: 1/8" = 1'-0"
4928sf Gross Area



FIRST FLOOR PLAN
SCALE: 1/8" = 1'-0"
4928sf Gross Area



LOWER LEVEL PLAN
SCALE: 1/8" = 1'-0"
4936sf Gross Area

Station 415

ALPHAarchitects
17 CHESTNUT STREET
PORTLAND, ME 04101
PHONE: 207.761.9500
FAX: 207.761.9595
design@alphaarchitects.com

© COPYRIGHT
Reuse or reproduction of the contents of this document is not permitted without written permission of ALPHA ARCHITECTS



Station 415
415 Cumberland Avenue
Portland, ME. 04101

JOB: 16110

ISSUE DATE

PERMIT	09-30-16
SFMO	-
CD's	-
REV. 1	-
REV. 2	-
PRINT	09-30-16

LIFE SAFETY
BASEMENT, 1st FL., 2nd FL.
& PENTHOUSE PLANS

LS1.0

09-30-16