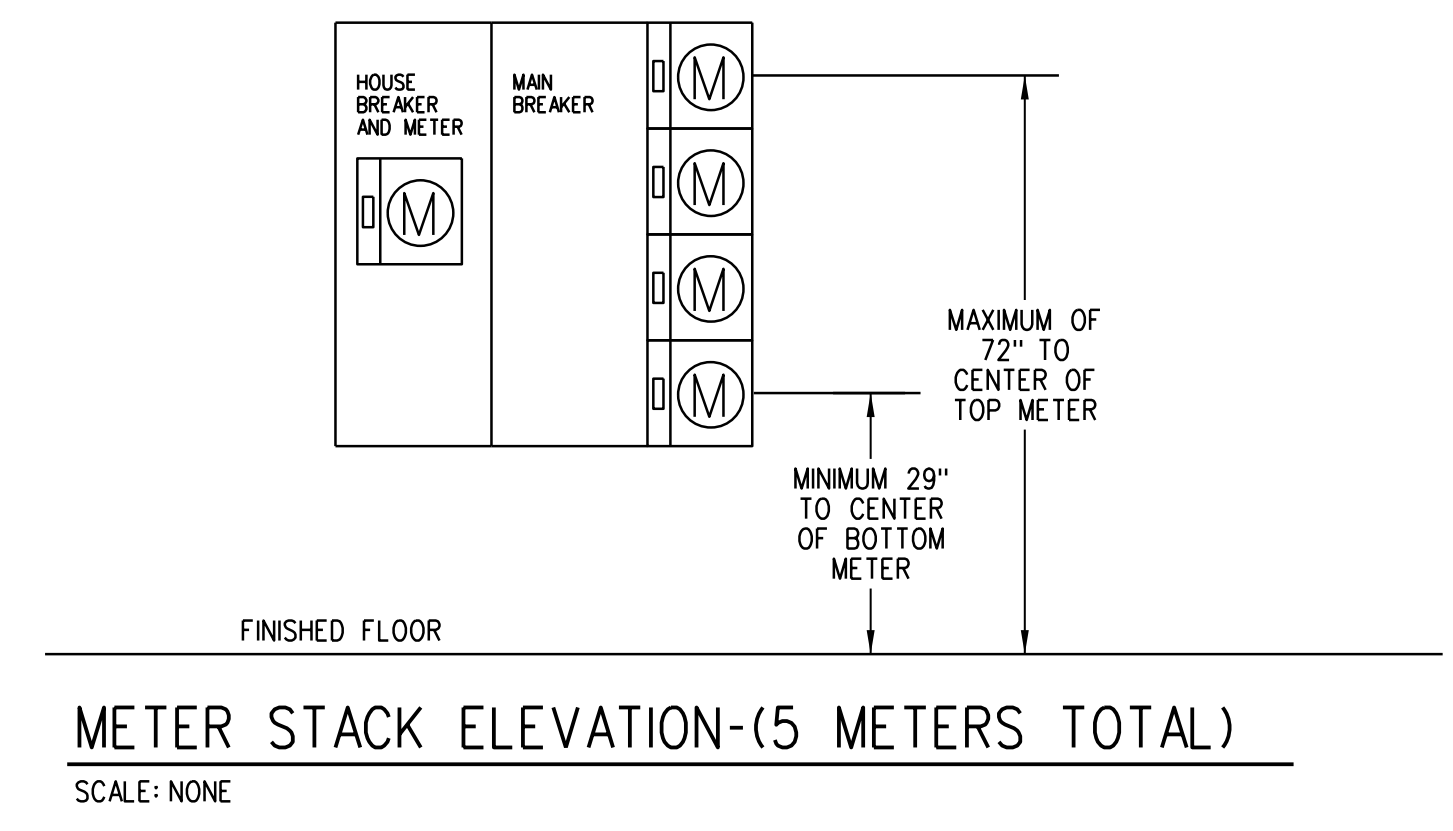
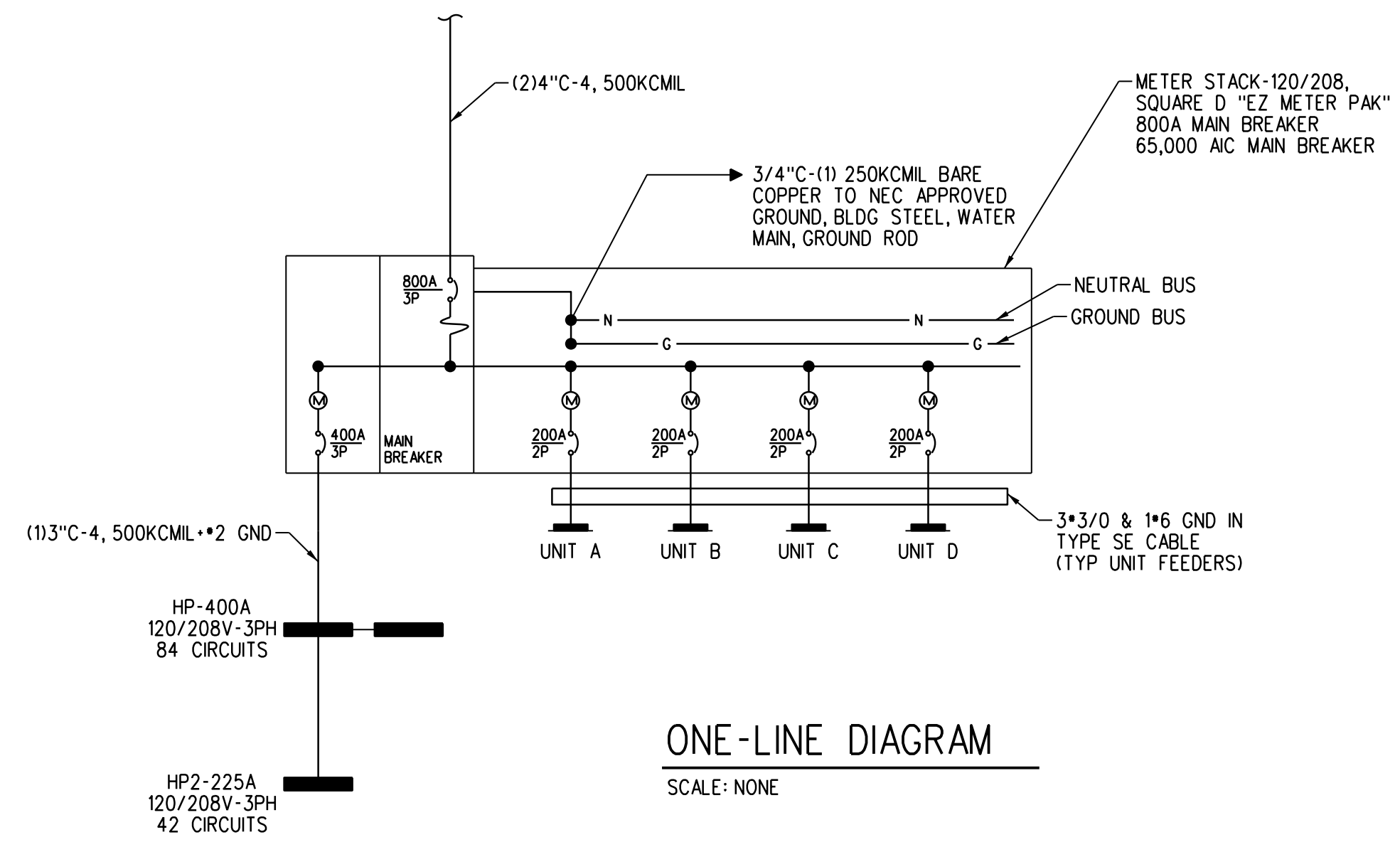
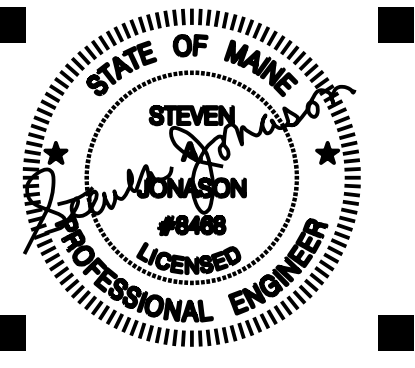
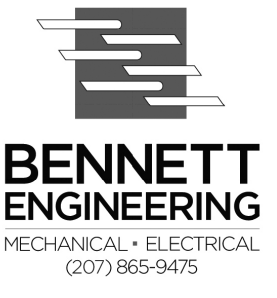
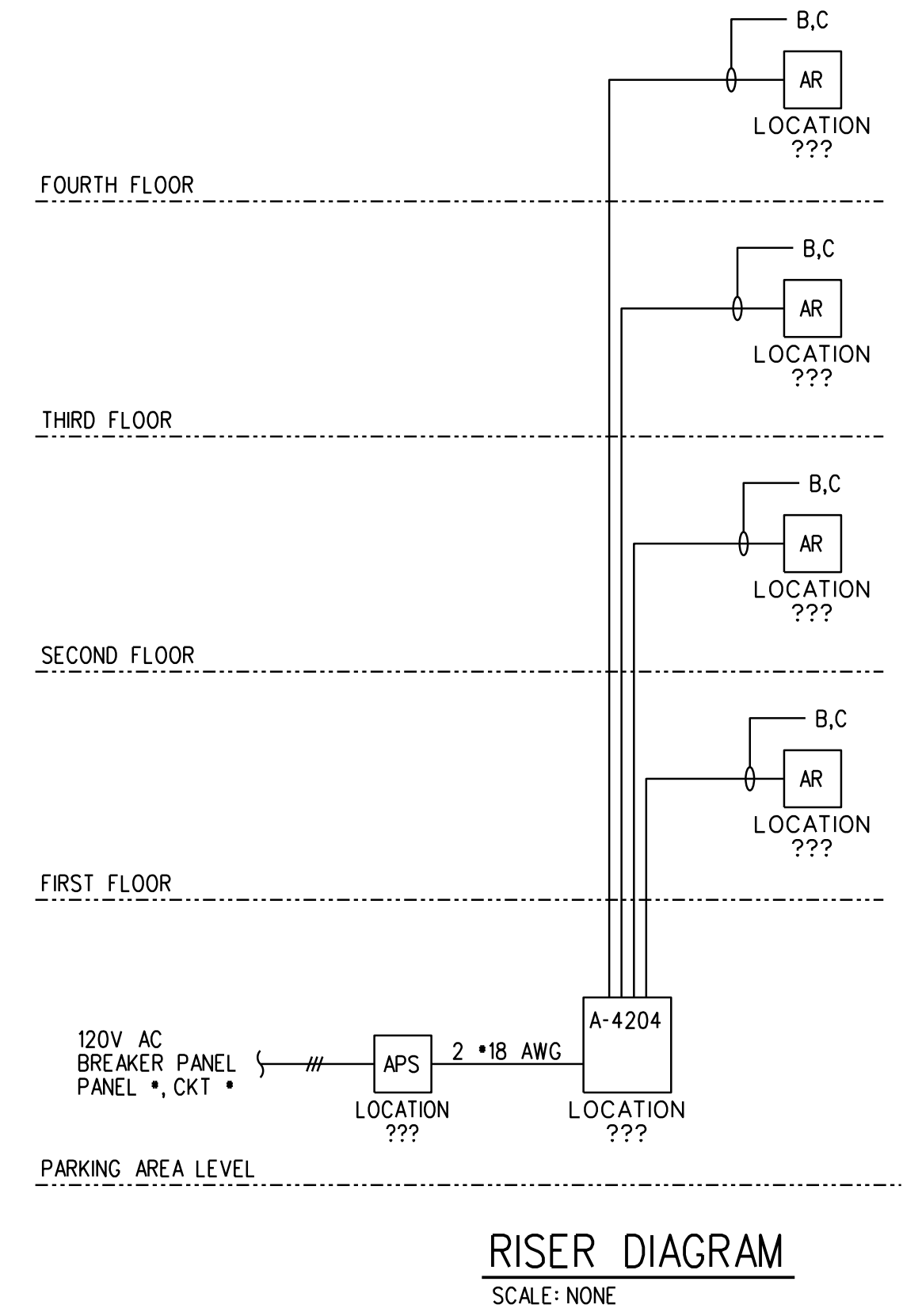


ALPHAarchitects
 17 CHESTNUT STREET
 PORTLAND, ME 04101
 PHONE: 207.761.9500
 FAX: 207.761.9595
 design@alphaarchitects.com



AREA OF REFUGE SYSTEM SYMBOL LEGEND			
[A-4204]	AREA OF REFUGE ANNUNCIATOR (5-ZONE)	CORNELL A-4204	CORNELL BB-
[APS]	AREA OF REFUGE 24VDC POWER SUPPLY	CORNELL B-5243A	SUPPLIED WITH UNIT
[AR]	AREA OF REFUGE STATION	CORNELL 4201B/V	2-GANG BOX

AREA OF REFUGE WIRE LIST			
B	RESCUE ASSISTANCE STATION - 22 AWG 4 CONDUCTOR NON-SHIELDED		
	NON-PLENUM RATED: CMR	PLENUM RATED: CMP	
	ANIXTER SG2204N11	ANIXTER SG2204N22	
	AREA = 0.0172 SQ INCH	AREA = 0.0160 SQ INCH	
C	AUDIO RESCUE ASSISTANCE STATION - 22 AWG 2 CONDUCTOR SHIELDED		
	NON-PLENUM RATED: CMR	PLENUM RATED: CMP	
	ANIXTER SG2202S41	ANIXTER SG2202S22	
	AREA = 0.0255 SQ INCH	AREA = 0.0120 SQ INCH	
CONDUIT SIZE	CONDUCTOR AREA	CONDUIT SIZE	CONDUCTOR AREA
1/2"	0.12 SQ INCH X	1-1/4"	0.60 SQ INCH X
3/4"	0.21 SQ INCH X	1-1/2"	0.82 SQ INCH X
1"	0.34 SQ INCH X	2"	1.34 SQ INCH X
X 40% FILL 2005 NEC			
CONTACT YOUR LOCAL SIMPLEXGRINELL OFFICE FOR ANY CABLE SUBSTITUTIONS			



Station 415
 415 Cumberland Avenue
 Portland, ME. 04101

JOB: 16110

ISSUE DATE	
PRELIM	01-17-16
SFMO	-
CD's	-
REV. 1	-
REV. 2	-
PRINT	09-30-16

PANEL SCHEDULES

E4.1

FOR PERMIT 09-30-16