

UNITS A/B PARTIAL PLANS-FIRST FLOOR
SCALE: 1/4"=1'-0"

WORK NOTES:

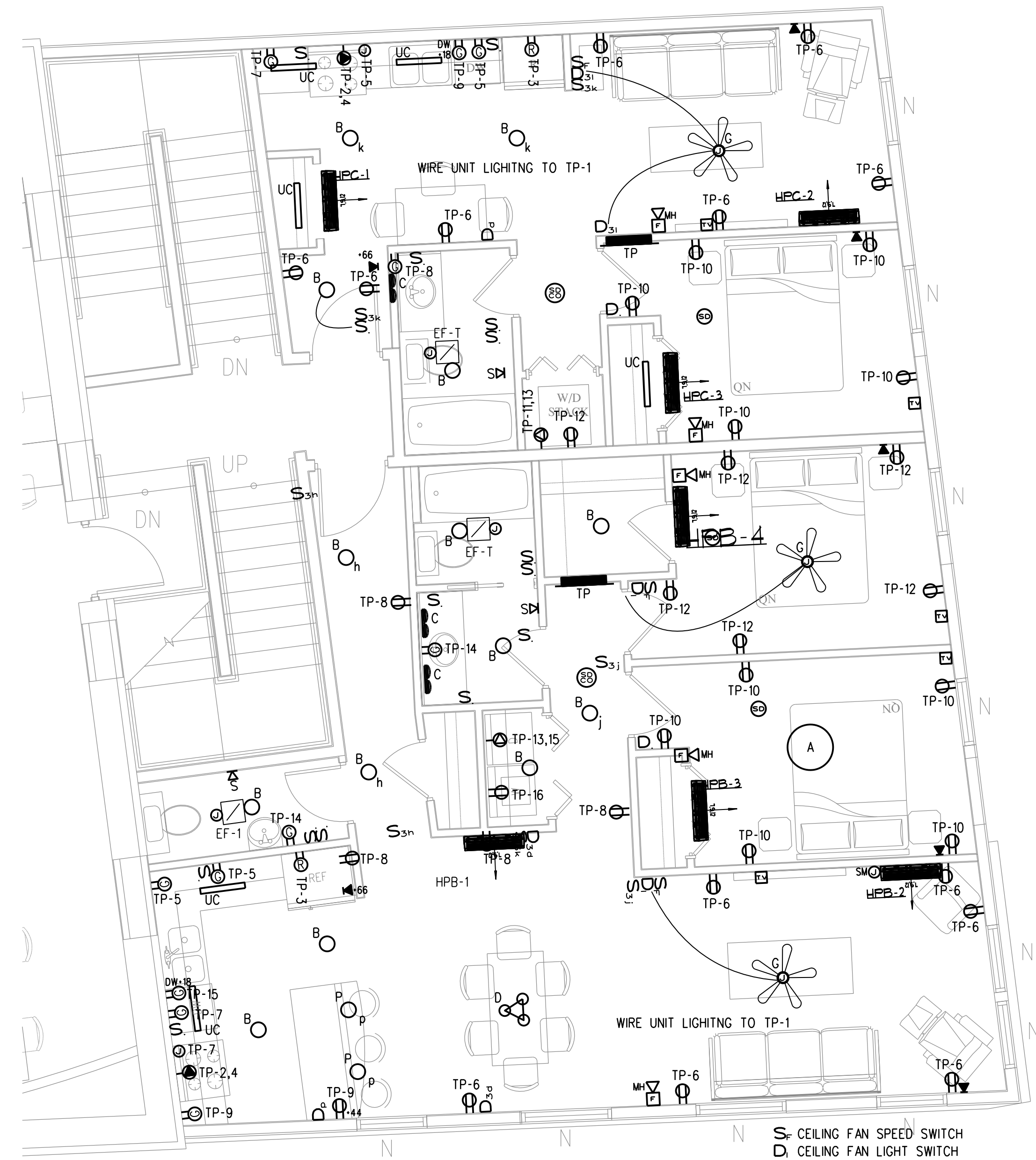
- RESIDENTIAL LOAD CENTERS
LOAD CENTERS LOCATED IN HANDICAP APARTMENTS SHALL BE MOUNTED SO NO CIRCUIT BREAKER HANDLE IS MORE THAN 48 AFF.
 - FIRE ALARM SYSTEM STROBES
ALL ROOMS IN HANDICAP DESIGNATED APARTMENTS SHALL HAVE FIRE ALARM SYSTEM STROBES, 177CD IN SLEEPING ROOMS AND 15CD IN ALL OTHERS.
 - FAN/LIGHT SWITCHES FOR OVEN HOODS
OVEN HOODS IN HANDICAP DESIGNATED APARTMENTS SHALL HAVE FAN AND LIGHT SWITCHES MOUNTED AT COUNTER HEIGHT 48 AFF.
 - DOOR BELL AND STROBE
PROVIDE A STROBE LIGHT THAT IS OPERATED BY A DOOR BELL BUTTON AT THE ENTRANCE OF HANDICAP DESIGNATED APARTMENTS
- GENERAL NOTES:**
- SWITCHES, OUTLETS, TEL JACKS AND TV JACKS TO BE STAGGERED IN COMMON WALLS BETWEEN UNITS TYPICAL. PROVIDE PUTTY PADS IN INSTANCES WHERE DEVICES CANNOT BE PROPERLY STAGGERED.
 - CONTRACTOR SHALL ROUGH IN BOXES IN ONE OF EACH UNIT TYPE FOR REVIEW IN THE FIELD BY THE OWNER.
 - REFER TO ARCHITECTURAL REFLECTED CEILING PLAN TO COORDINATE THE LOCATION OF LIGHTING FIXTURES.
 - ALL PRODUCTS OF COMBUSTION DETECTORS (SMOKE DETECTORS) SHALL PROVIDE BOTH AUDIO AND VISUAL ALARMS.
 - SWITCHES FOR RANGE HOOD FAN AND LIGHT SHALL BE MOUNTED AT COUNTER HEIGHT.
 - ELECTRICAL PANELS SHALL BE MOUNTED WITH THE TOP BREAKER NOT HIGHER THAN 48" AFF FOR ADA UNITS, ALL NON ADA UNITS 72".
 - UNIT THERMOSTATS SHALL BE MOUNTED NOT HIGHER THAN 48" AFF FOR ADA UNITS, ALL NON ADA UNITS 72".

UNIT FIRE ALARM NOTES:

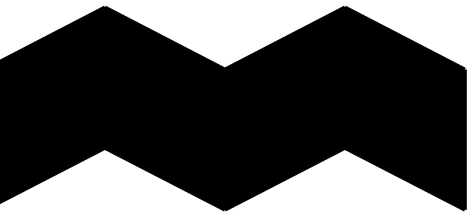
- SUPERVISED CENTRAL SYSTEM ACTIVATION ALL SYSTEM AUDIO/VISUAL AND VISUAL ONLY DEVICES SHALL ALARM.
- WHEN UNIT SMOKE DETECTOR GOES INTO ALARM ALL SINGLE STATION AUDIO/VISUAL AND VISUAL ONLY DEVICES WITHIN THAT UNIT WILL ACTIVATE. THIS WILL NOT ACTIVATE THE ENTIRE BUILDING SYSTEM.
- THE WALL MOUNTED HORN/STROBES WITHIN THE LIVING UNITS SHALL BE CONNECTED TO THE SUPERVISED CENTRAL SYSTEM.
- CARBON MONOXIDE DETECTORS (120V) IN RESIDENCES SHALL BE INSTALLED AT LEAST 10 FEET FROM ANY HEAT SOURCE.
- INTERCONNECT ALL SINGLE STATION 120 VOLT CARBON MONOXIDE (CO) AND SMOKE DETECTORS WITHIN EACH LIVING UNIT. ALL INTERCONNECTED DETECTORS SHALL BE ON THE SAME CIRCUIT FOR PROPER OPERATION. REFER TO MANUFACTURER'S INSTALLATION MANUAL AND MOUNT DETECTORS IN ACCORDANCE WITH MANUFACTURER'S RECOMMENDATIONS. CO DETECTORS SHALL HAVE AN ALARM SOUND THAT IS DIFFERENT THAN THE LIVING UNIT SMOKE DETECTORS AND FIRE ALARM SYSTEM ALARMS.
- AUDIBLE ALARM Db LEVELS SHALL COMPLY WITH NFPA 72.
- A/V DEVICES IN BEDROOMS SHALL BE 75db AND 15cd. STROBES SHALL BE 177Cd FOR HEARING IMPAIRED.

ELECTRICAL KEY NOTES:

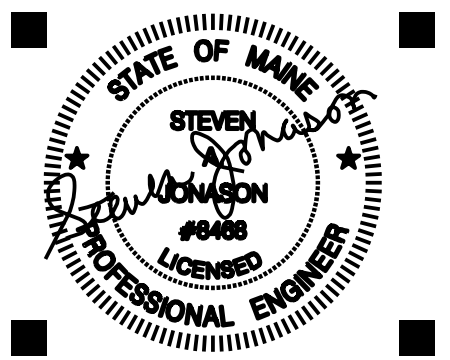
- CONTRACTOR SHALL PROVIDE 3/4" C FROM CU TO HP FOR POWER AND CONTROLS. COORDINATE WITH MECHANICAL PRIOR TO ROUGH-IN.



UNITS C/D PARTIAL PLANS-SECOND FLOOR
SCALE: 1/4"=1'-0"



ALPHAarchitects
17 CHESTNUT STREET
PORTLAND, ME 04101
PHONE: 207.761.9500
FAX: 207.761.9595
design@alphaarchitects.com



Station 415
415 Cumberland Avenue
Portland, ME. 04101

JOB: 16110

ISSUE DATE	
PRELIM	01-17-16
SFMO	-
CD's	-
REV. 1	-
REV. 2	-
PRINT	09-30-16

UNIT PLANS
E3.2

FOR PERMIT 09-30-16