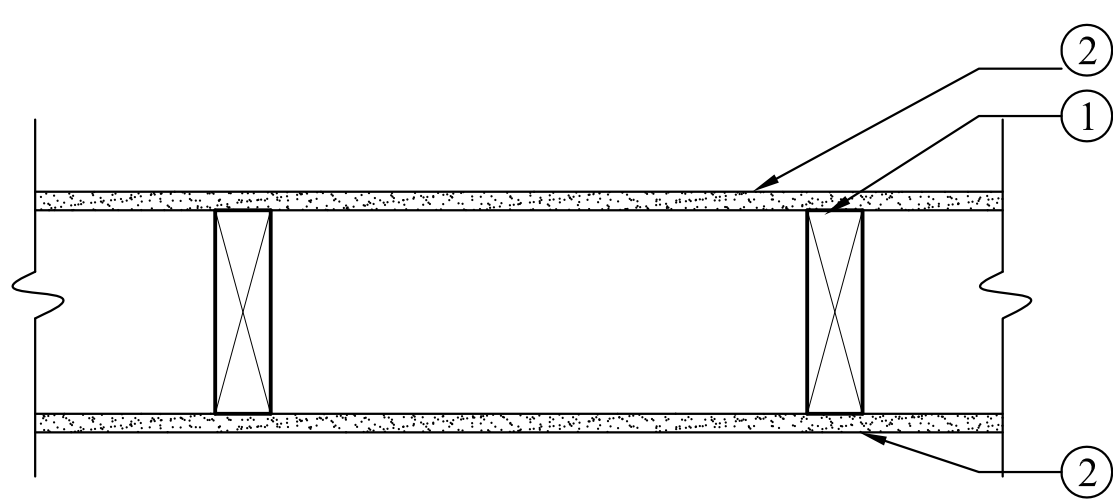


NEW WALL TYPE



1 HOUR CORRIDOR WALL

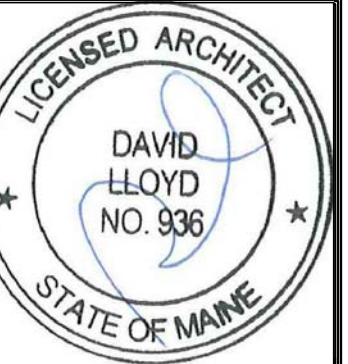
**CORRIDOR WALL ASSEMBLY -1 HOUR**  
**GA FILE NO. WP 3510 PROPRIETARY 1 HOUR FIRE**  
 Fire Test: UL R3501-47, 48, 9-17-65; UL Design U314;

1. **Wood Studs** -- Nom 2 by 6 in. spaced 16 in. or 24 in. OC with two 2 by 6 in. top and one 2 by 6 in. bottom plates.
2. **Gypsum Board** -- 5/8 in. thick, 4 ft wide Type X "Sheetrock" brand wallboard, attached to wood studs with Type S steel screws spaced 8 in. OC. along edges of board and 12 in. OC in the field of the board. Joints oriented vertically and staggered on opposite sides of the assembly 48 in. OC. When attached to item 2 (resilient channels), wallboard is screw attached to furring channels with 1 in. long, Type S steel screws spaced 12 in. OC.
3. **Joint Tape and Compound (Not shown)** -- Vinyl, dry or premixed joint compound, applied in two coats to joints and screw heads; paper tape, 2 in. wide, embedded in first layer of compound over all joints. As an alternate, nominal 3/32 in. thick gypsum veneer plaster may be applied to the entire surface of Classified veneer baseboard. Joints reinforced. Paper tape and joint compound may be omitted when gypsum boards are supplied with square edges.



2nd FLOOR PLAN

FOREST AVENUE



OWNER:

**ARCHETYPE, P.A.  
ARCHITECTS**

48 Union Wharf Portland, Maine 04101  
(207) 772-6022 Fax (207) 772-4056

**415 CUMBERLAND  
AVENUE**

PORTLAND, MAINE

Project:

Revisions:

Date  
27 MARCH 2015

Scale  
1/4" = 1'-0"

2nd FLOOR PLAN

**A1.02**