

OWNER:

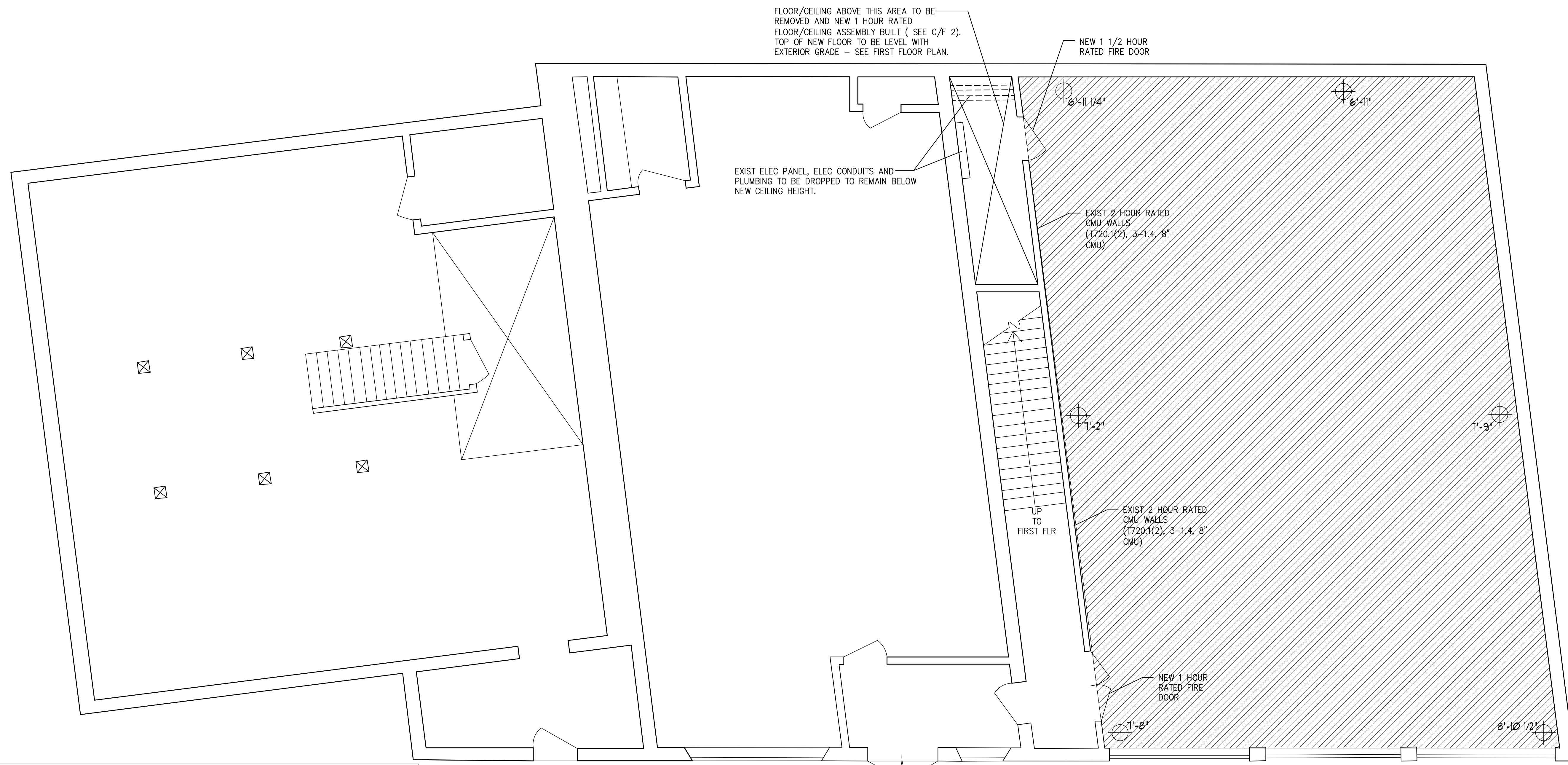
ARCHETYPE, P.A.
ARCHITECTS
48 Union Wharf Portland, Maine 04101
(207) 772-6022 Fax (207) 772-4056

Project:
415 CUMBERLAND AVENUE
PORTLAND, MAINE

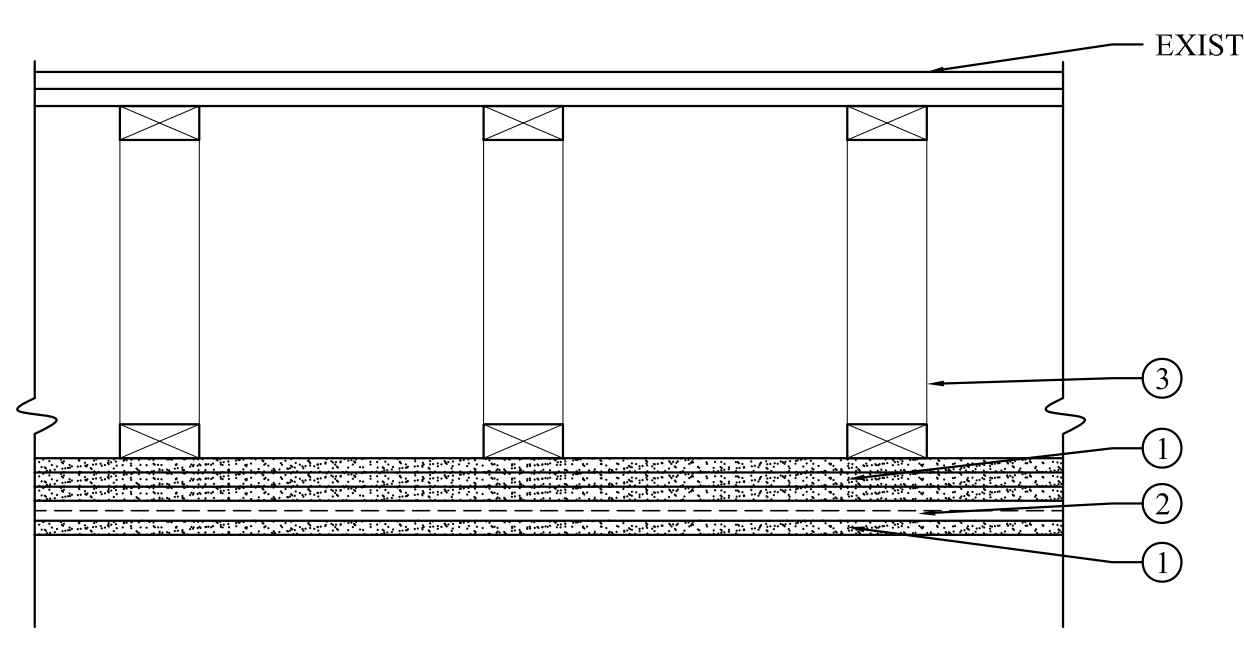
Revisions:	

Date	27 MARCH 2015
Scale	1/4" = 1'-0"
BASEMENT/GARAGE FLOOR PLAN	

A1.00

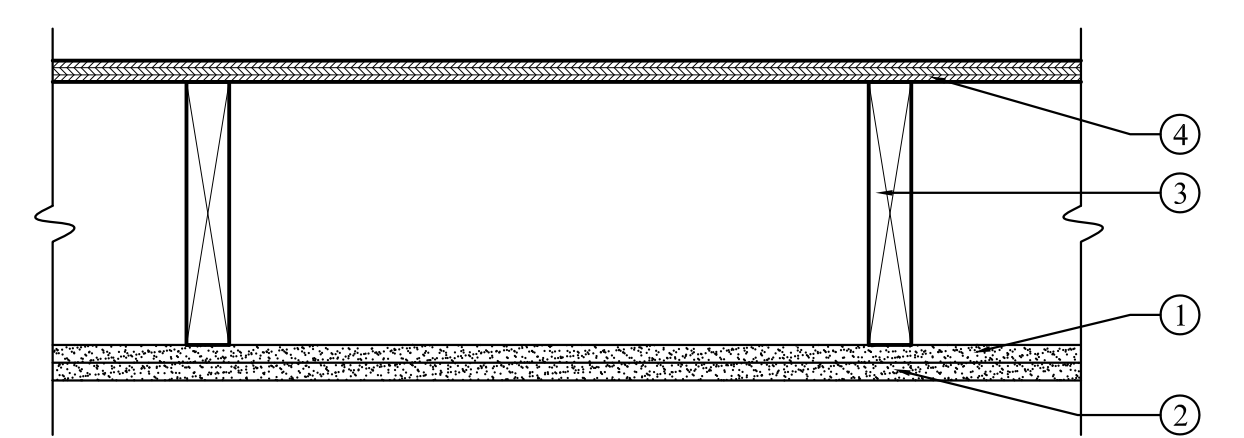


FLOOR/CEILING TYPES



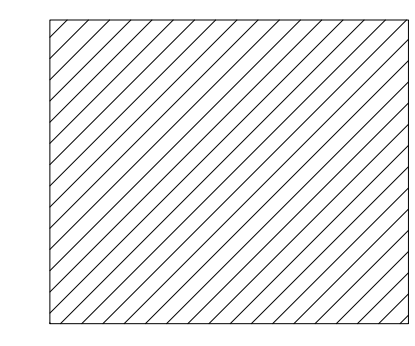
C/F 1 2 HOUR CEILING/FLOOR ASSEMBLY

- 2 HOUR CEILING ASSEMBLY**
GA-610-02 FIRE RESISTANCE PROVIDED BY GYPSUM BOARD MEMBRANE PROTECTION (BASED ON UL DESIGN L556)
- Gypsum Board** - 4 layers of 5/8" type X gypsum board applied to ceiling framing spaced 24" o.c. with a 7/8" hat-shaped steel furring channel located between the third and face layer. The base layer of gypsum board is applied at right angles to the ceiling framing and attached with 1-1/4" type S or W drywall screws spaced at 12" o.c. The second layer of gypsum board is applied at right angles to the ceiling framing and attached with 2" type S or W drywall screws spaced 12" o.c. The third layer of gypsum board is applied at right angles to ceiling framing and attached with 2-1/2" type S or W drywall screws spaced 12" o.c. The joints in each layer are offset a minimum of 10" from the previous layer. The face layer of gypsum board is applied at right angles to the furring channels and attached with 1-1/8" type S drywall screws spaced 12" o.c. Face layer joints and fasteners are finished to Level 1 as specified in GA-214, *Levels of Gypsum Board Finish*.
 - Furring Channel** - Steel hat-shaped rigid furring channels are applied at right angles to the ceiling framing and spaced 24" o.c. the channels are attached to the ceiling framing at each framing member/furring channel intersection with two 2-1/2" type S or W drywall screws.
 - Framing Members** - Existing Wood Floor Trusses @ 16" OC
Ceiling provides two hour fire resistance protection for framing, including trusses.

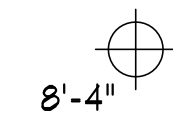


C/F 2 1 HOUR CEILING/FLOOR ASSEMBLY

- 1 HOUR CEILING/FLOOR ASSEMBLY**
GA FILE NO. FC5406 - APPENDED GA 610-02
- Base layer** 5/8" type X gypsum wallboard applied at right angles to wood framing with 1 1/4" Type W or S drywall screws 24" o.c.
 - Face layer** 5/8" type X gypsum wallboard or gypsum veneer base applied at right angles to framing with 1 7/8" Type W or S drywall screws 12" o.c. at joints and intermediate joists and 1/2" type G drywall screws 12" O.C. placed 2" back on either side of end joints. Edge joints offset 24" from base layer edge joints.
 - Wood joists 2x10 at 24" o.c. (SEE STRUCTURALS)
 - 3/4" plywood with exterior glue applied at right angles to joists with 8d nails.
- Ceiling provides one hour fire resistance protection for framing, including trusses.



- INDICATES AREA WHERE EXISTING CEILING IS TO BE REMOVED AND REPLACED WITH CEILING C/F 1 TO PROVIDE 2 HOUR RATED SEPARATION BETWEEN PARKING AND BUSINESS OCCUPANCY ON FIRST FLOOR. 1 HOUR FIRE RATED CAULK TO BE APPLIED BETWEEN CMU WALLS AND CEILING FOR ENTIRE PERIMETER OF CEILING



8'-4" - INDICATES CLEAR FINISHED HEIGHT OF NEW RATED CEILING ABOVE EXIST FLOOR