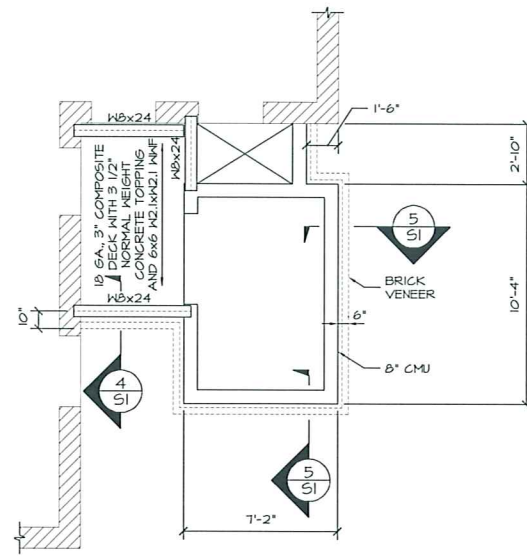
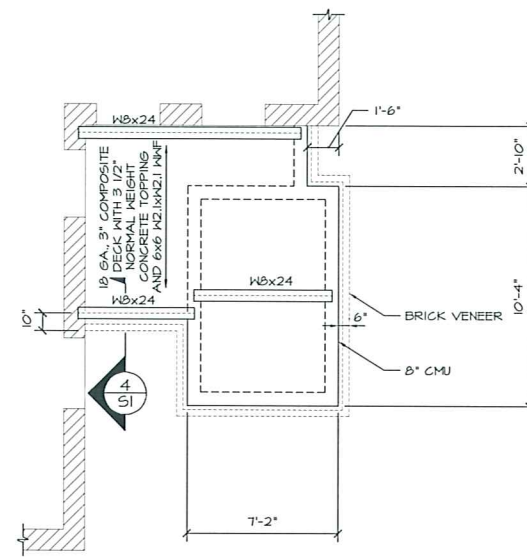


FOUNDATION PLAN
1/4"=1'-0"

SEE ARCHITECTURAL DRAWINGS FOR DOOR LOCATIONS AND SIZES.



TYPICAL FLOOR FRAMING PLAN
1/4"=1'-0"



ROOF FRAMING PLAN
1/4"=1'-0"

DESIGN CRITERIA

BUILDING CODE: 2003 INTERNATIONAL BUILDING CODE

DESIGN LOADS:

LIVE LOADS
STAIRS AND LANDINGS 100 PSF

SNOW LOAD
GROUND SNOW LOAD, P_g 60 PSF
SNOW EXPOSURE FACTOR, C_e 1.0
SNOW LOAD IMPORTANCE FACTOR, I_s 1.0
THERMAL FACTOR, C_t 1.1
FLAT ROOF SNOW LOAD, P_f 46 PSF

WIND LOAD
BASIC WIND SPEED (3 SEC GUST), V_{3s} 85 MPH
WIND IMPORTANCE FACTOR, I_w 1.0
BUILDING CATEGORY 1
EXPOSURE CATEGORY B
HEIGHT AND EXPOSURE ADJUSTMENT COEFFICIENT, K_z 1.24

EARTHQUAKE DESIGN DATA
SEISMIC IMPORTANCE FACTOR, I_s 1.0
MAPPED SPECTRAL RESPONSE ACCELERATIONS
0.2 SEC PERIOD, S_s 0.375
1 SEC PERIOD, S₁ 0.100
SITE CLASS D

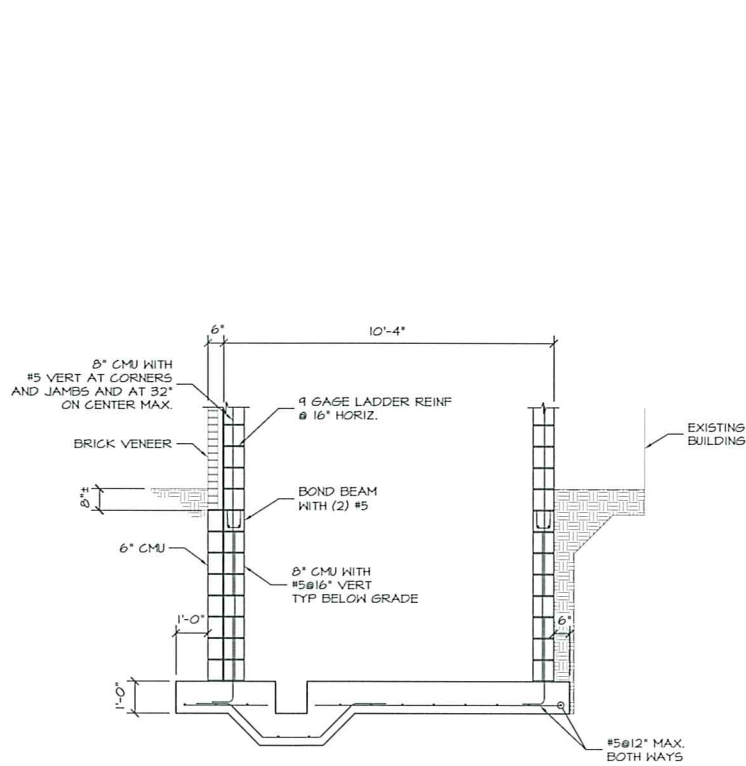
SPECTRAL RESPONSE COEFFICIENTS
0.2 PERIOD 5% DAMPED, S_{ds} 0.375
1 SEC PERIOD 5% DAMPED, S_{d1} 0.160
SEISMIC DESIGN CATEGORY C

BASIC SEISMIC-FORCE-RESISTING SYSTEM
DESIGN BASE SHEAR 22.1 KIPS
SEISMIC RESPONSE COEFFICIENT, C_d 1.75
RESPONSE MODIFICATION FACTOR, R 2.0
SYSTEM OVERSTRENGTH FACTOR, Ω 2.5
ANALYSIS PROCEDURE EQUIVALENT LATERAL FORCE PER ASCE 7-02

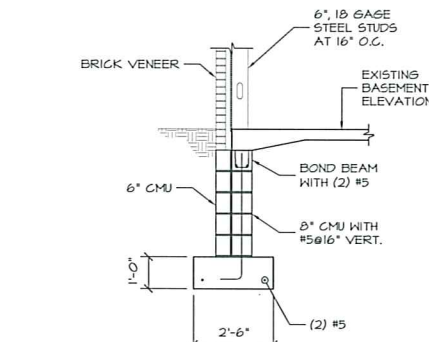
OWNER:

ARCHETYPE, P.A.
ARCHITECTS
48 Union Wharf Portland, Maine 04101
(207) 773-6022 Fax (207) 772-4056

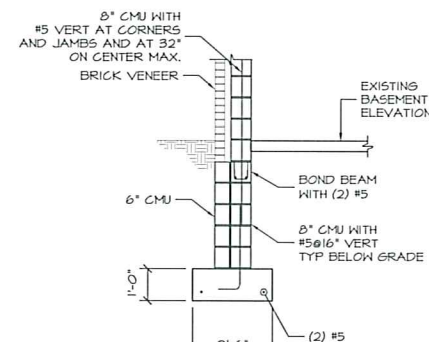
BURNHAM TOWERS
CUMBERLAND AVENUE
PORTLAND, MAINE



SECTION 1
3/8"=1'-0" S1

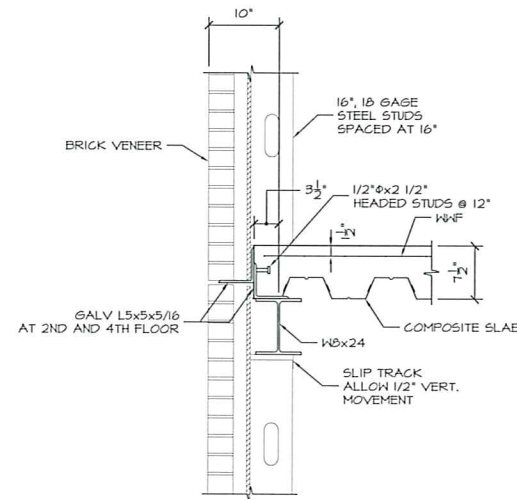


SECTION 2
3/8"=1'-0" S1



SECTION 3
3/8"=1'-0" S1

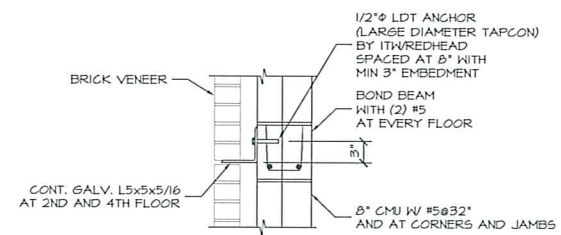
EXTEND FOOTING TO EXIST. BATTERED FIELDSTONE FOUNDATION.



SECTION 4
1"=1'-0" S1

LOOSE LINTEL SCHEDULE	
ROUGH OPENING	LINTEL SIZE
UP TO 3'-0"	L3x3x5/16
>3'-0" TO 4'-6"	L4x3x5/16 LLV
>4'-6" TO 6'-0"	L5x3x5/16 LLV

INSTALL ONE LINTEL FOR EACH 4" OF WALL THICKNESS
ALL LINTELS ARE GALVANIZED
PROVIDE 6" BEARING AT EACH END



SECTION 5
1"=1'-0" S1

SEE ARCHITECTURAL FOR FLASHING AND JOINT DETAILS

Project:

Scale AS NOTED

Date FEBRUARY 6, 2007
Revisions:

STRUCTURAL DESIGN CRITERIA PLANS AND DETAILS

S1