

- ▲
- ▲
- ▲
- ▲
- ▲

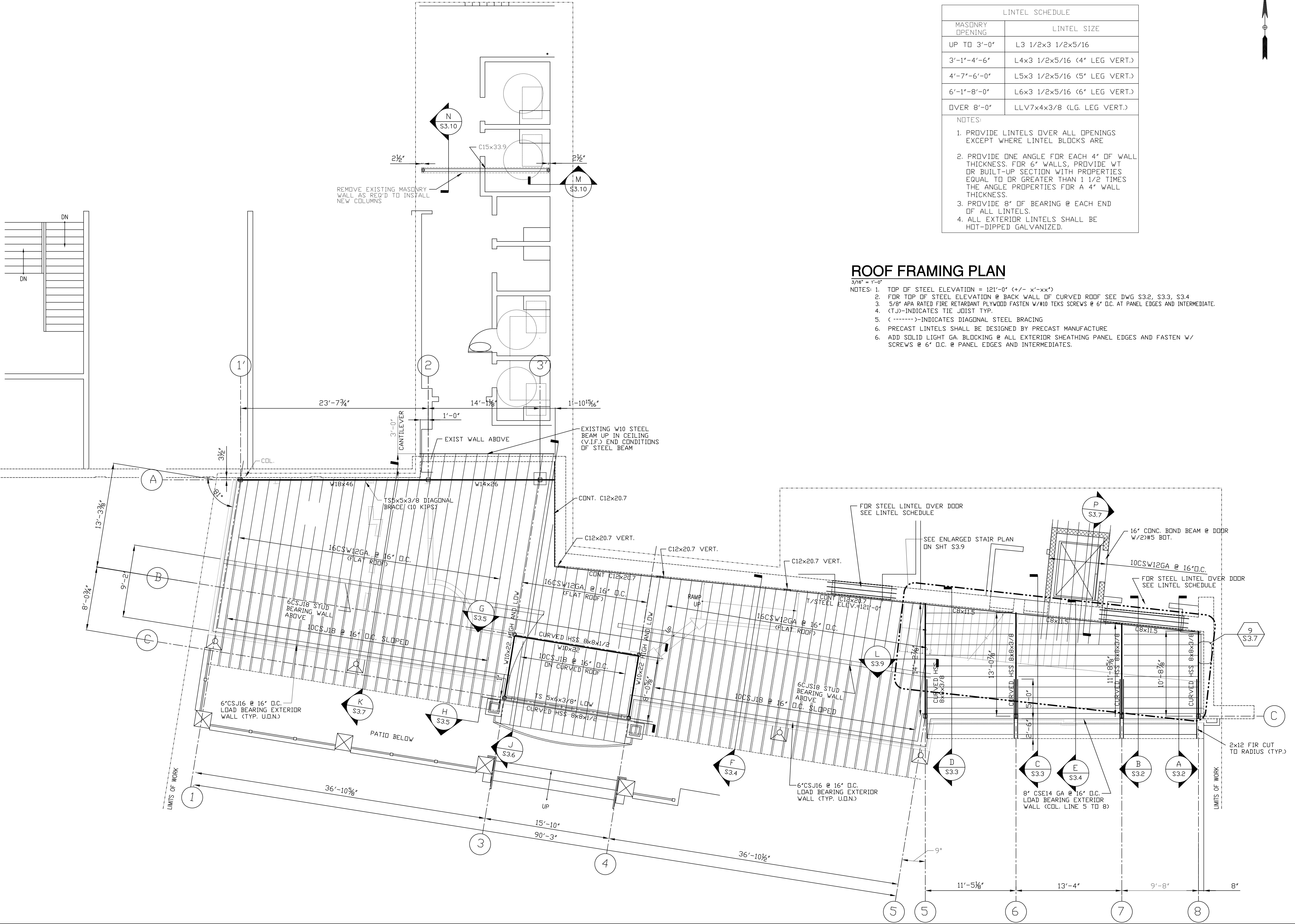
LINTEL SCHEDULE	
MASONRY OPENING	LINTEL SIZE
UP TO 3'-0"	L3 1/2x3 1/2x5/16
3'-1"-4'-6"	L4x3 1/2x5/16 (4' LEG VERT.)
4'-7"-6'-0"	L5x3 1/2x5/16 (5' LEG VERT.)
6'-1"-8'-0"	L6x3 1/2x5/16 (6' LEG VERT.)
OVER 8'-0"	LLV7x4x3/8 (LG. LEG VERT.)

NOTES:

- PROVIDE LINTELS OVER ALL OPENINGS EXCEPT WHERE LINTEL BLOCKS ARE
- PROVIDE ONE ANGLE FOR EACH 4" OF WALL THICKNESS. FOR 6" WALLS, PROVIDE WT OR BUILT-UP SECTION WITH PROPERTIES EQUAL TO OR GREATER THAN 1 1/2 TIMES THE ANGLE PROPERTIES FOR A 4" WALL THICKNESS.
- PROVIDE 8" OF BEARING @ EACH END OF ALL LINTELS.
- ALL EXTERIOR LINTELS SHALL BE HOT-DIPPED GALVANIZED.

ROOF FRAMING PLAN

- 3/16" = 1'-0"
- NOTES:
- TOP OF STEEL ELEVATION = 121'-0" (+/- X'-X")
 - FOR TOP OF STEEL ELEVATION @ BACK WALL OF CURVED ROOF SEE DWG S3.2, S3.3, S3.4
 - 5/8" APA RATED FIRE RETARDANT PLYWOOD FASTEN W/#10 TEK'S SCREWS @ 6" O.C. AT PANEL EDGES AND INTERMEDIATE.
 - (T.J.) INDICATES TIE JOIST TYP.
 - (-----) INDICATES DIAGONAL STEEL BRACING
 - PRECAST LINTELS SHALL BE DESIGNED BY PRECAST MANUFACTURE
 - ADD SOLID LIGHT GA. BLOCKING @ ALL EXTERIOR SHEATHING PANEL EDGES AND FASTEN W/ SCREWS @ 6" O.C. @ PANEL EDGES AND INTERMEDIATES.



REMOVE EXISTING MASONRY WALL AS REQ'D TO INSTALL NEW COLUMNS

