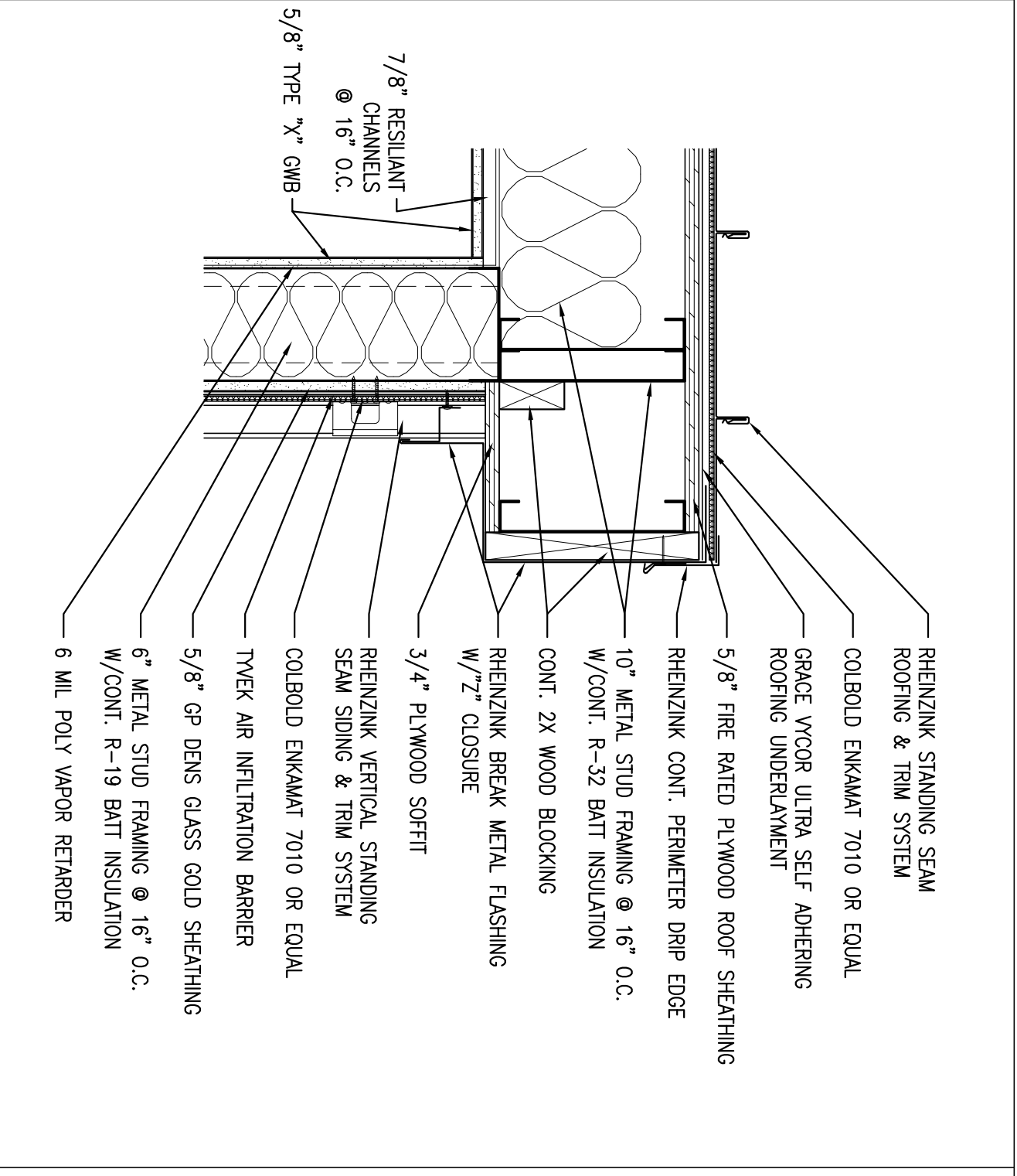
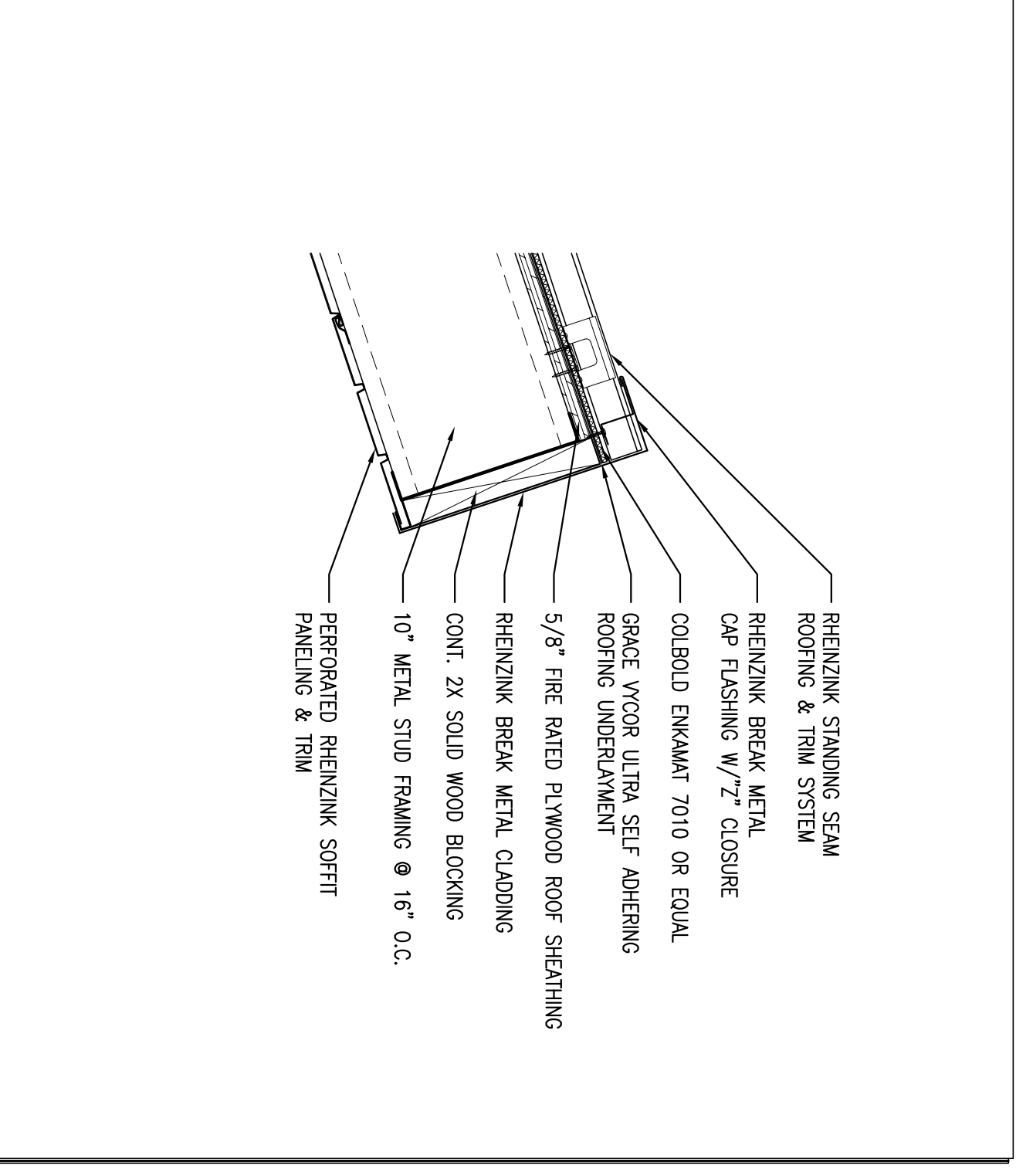


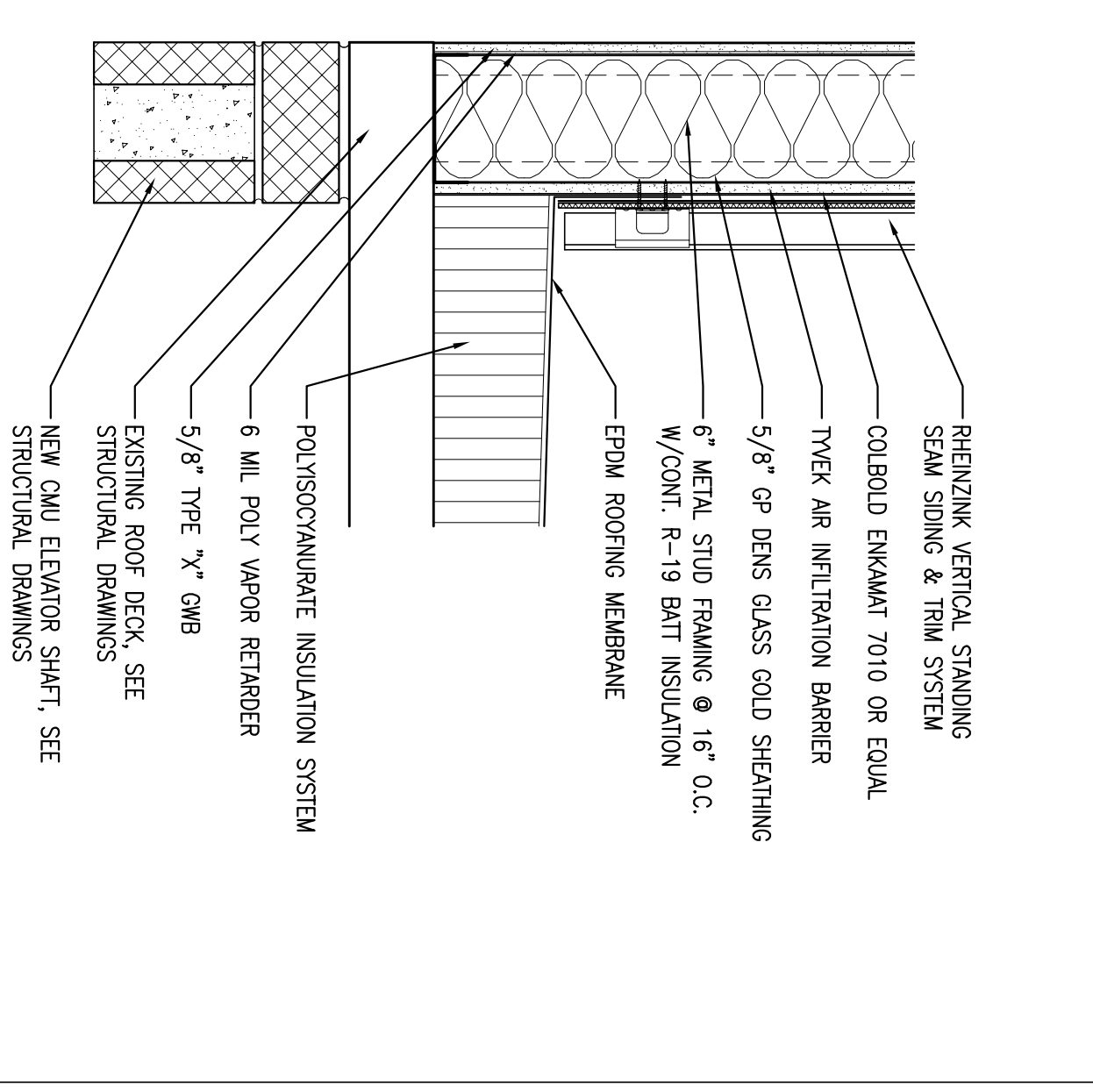
**1** **DETAIL @ NEW ROOF CONNECTION TO EXISTING LOW ROOF**  
 REFERENCED FROM: SCALE: 1/2" = 1'-0"



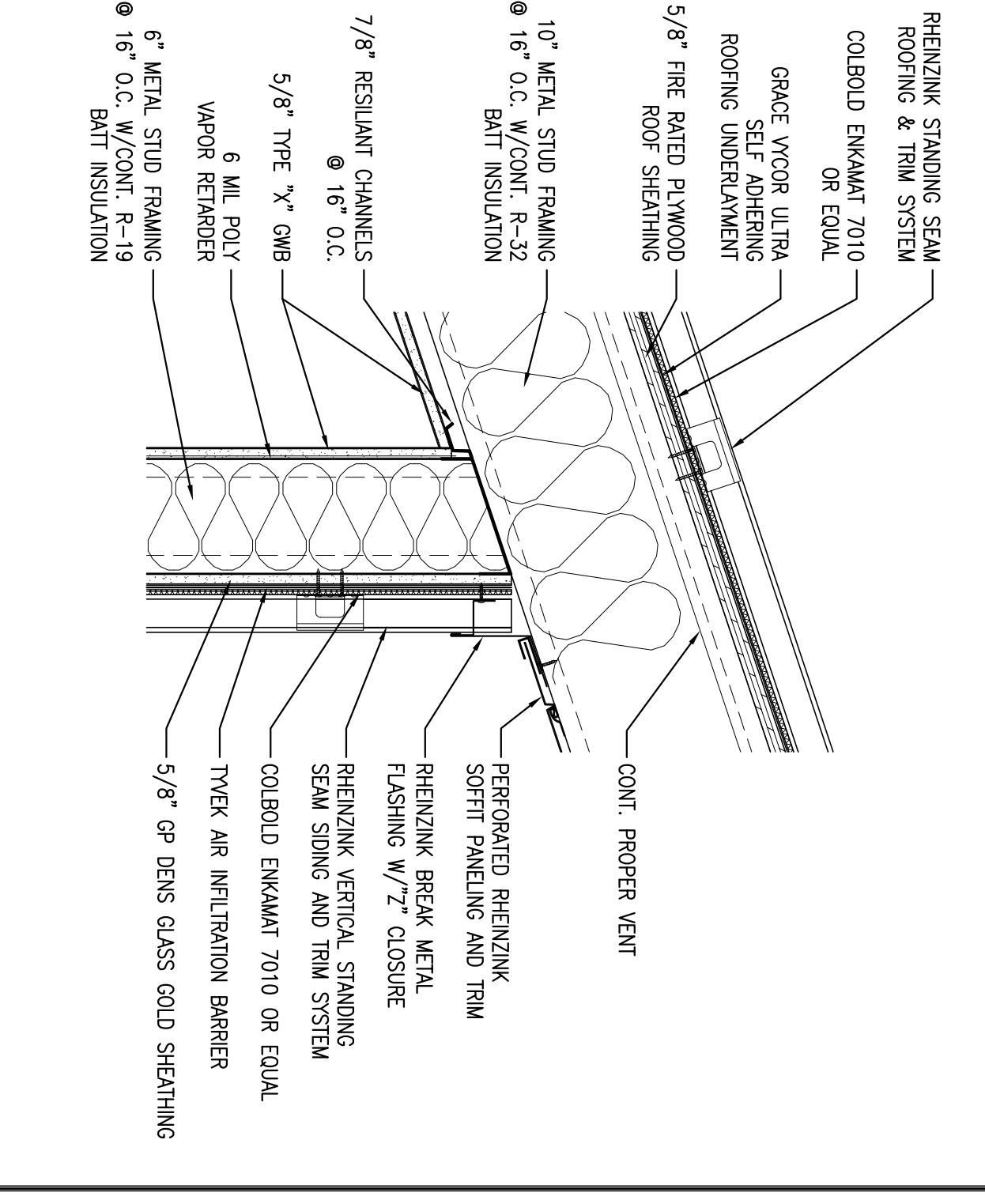
**3** **ROOF EDGE DETAIL @ ELEVATOR**  
 REFERENCED FROM: SCALE: 1/2" = 1'-0"



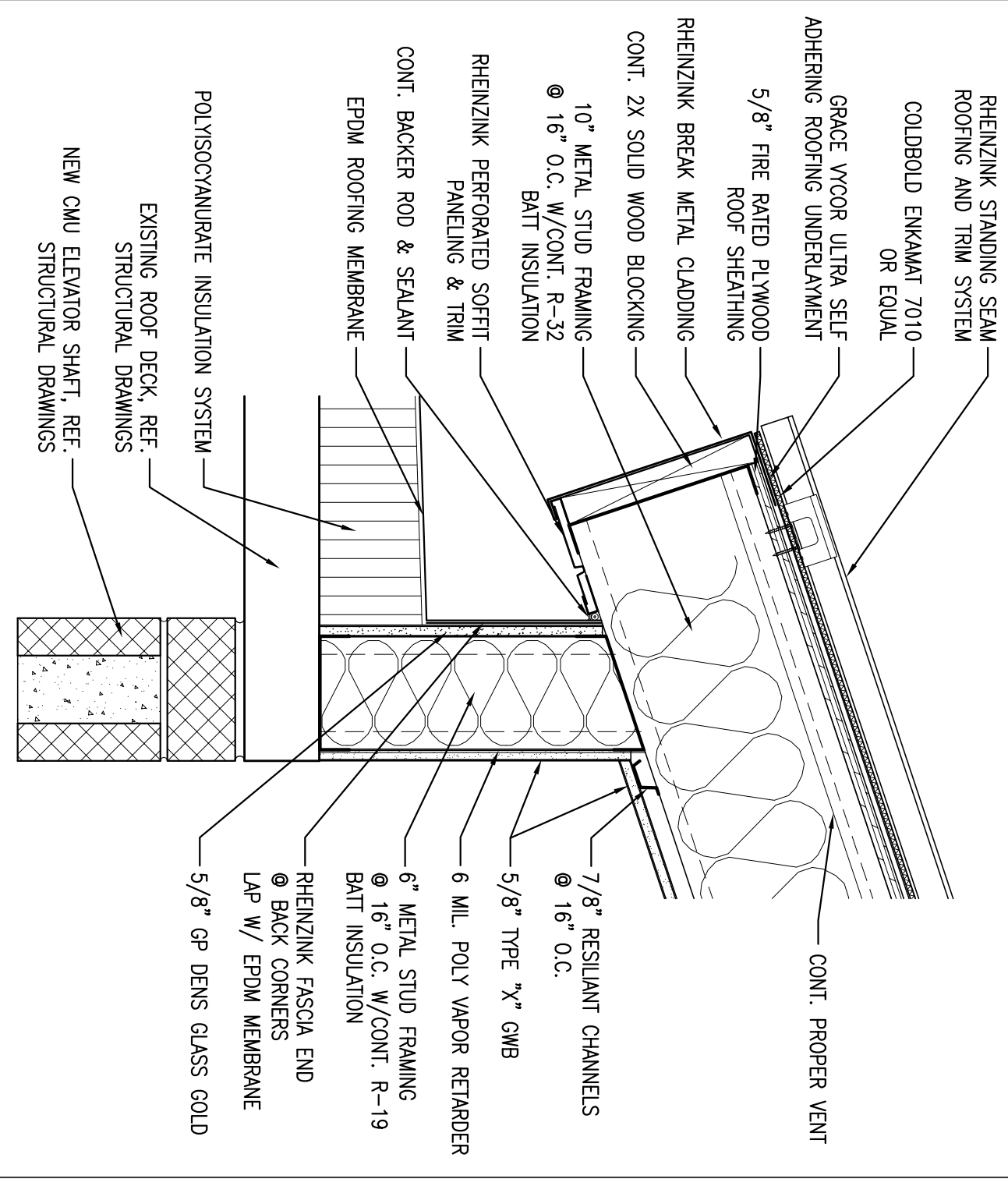
**4** **ROOF EDGE DETAIL @ ELEVATOR**  
 REFERENCED FROM: SCALE: 1/2" = 1'-0"



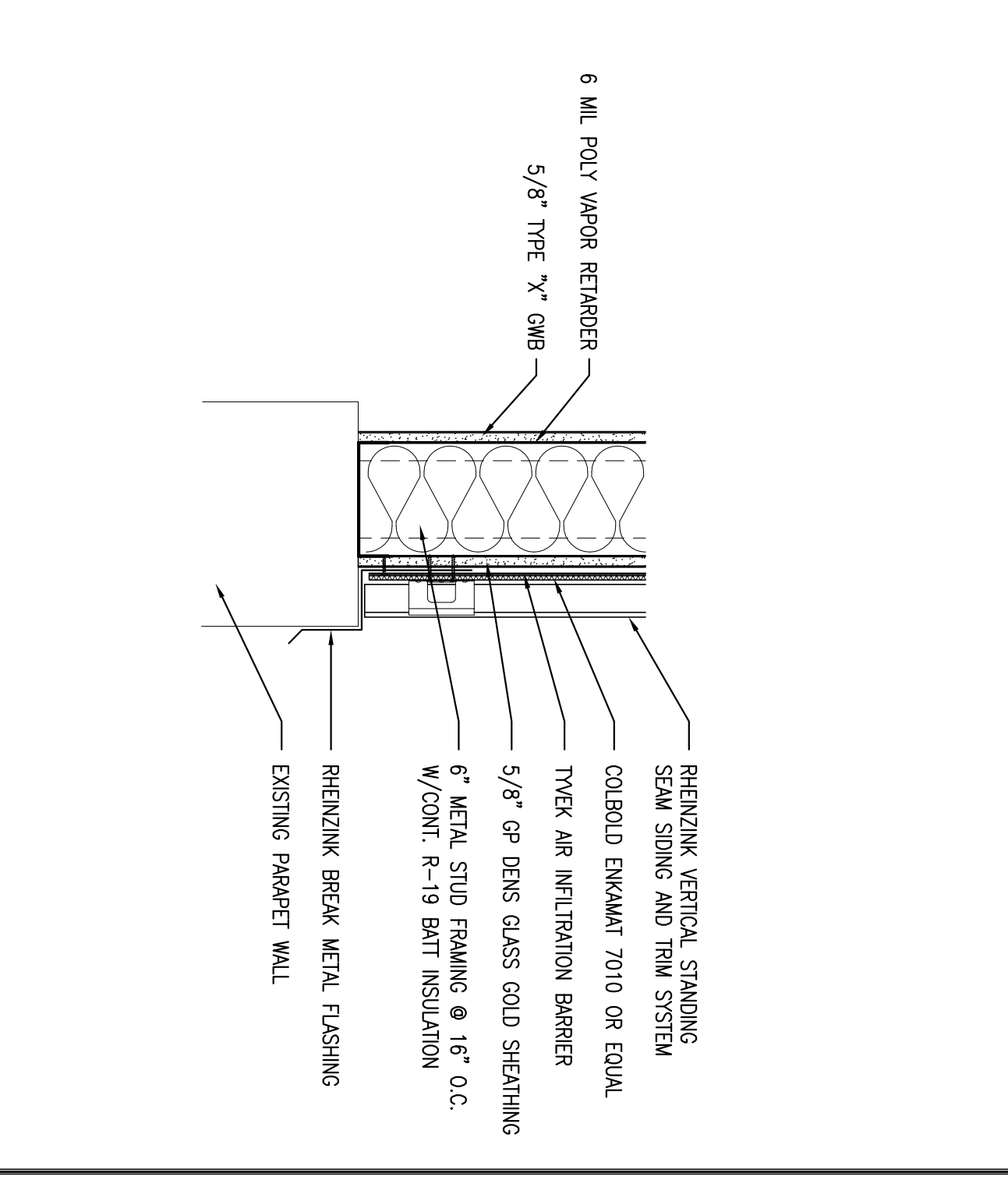
**7** **ELEVATOR WALL CONNECTION DETAIL**  
 REFERENCED FROM: SCALE: 1/2" = 1'-0"



**8** **ELEVATOR SLOPED ROOF DETAIL**  
 REFERENCED FROM: SCALE: 1/2" = 1'-0"



**11** **ELEVATOR WALL CONNECTION DETAIL**  
 REFERENCED FROM: SCALE: 1/2" = 1'-0"



**12** **ELEVATOR WALL CONNECTION DETAIL**  
 REFERENCED FROM: SCALE: 1/2" = 1'-0"

**9** **NOT USED**  
 REFERENCED FROM: SCALE:

**10** **NOT USED**  
 REFERENCED FROM: SCALE:

**11** **ELEVATOR WALL CONNECTION DETAIL**  
 REFERENCED FROM: SCALE: 1/2" = 1'-0"

**12** **ELEVATOR WALL CONNECTION DETAIL**  
 REFERENCED FROM: SCALE: 1/2" = 1'-0"

**CWS Architects**  
 Space Planning  
 Value Design  
 434 Cumberland Avenue  
 Portland, ME 04101  
 Phone: (207)714-4441  
 Fax: (207)714-0118  
[www.CWSArch.com](http://www.CWSArch.com)

**GREATER PORTLAND YMCA**  
 6/6 Cumberland County YMCA  
 70 Forest Ave Portland, ME 04101  
 (207) 874-1111  
 Owner  
 Client

**YMCA HIGH STREET ENTRY**  
 High Street - Portland, Maine

Project No: 04545ise  
 Drawing Title: **MISC. DETAILS**

Scale: AS NOTED  
 Date: Progress 03/23/05  
 Revisions:

Drawing Number: **A7.6**

ISSUED FOR PERMITTING & PRICING 05/12/05