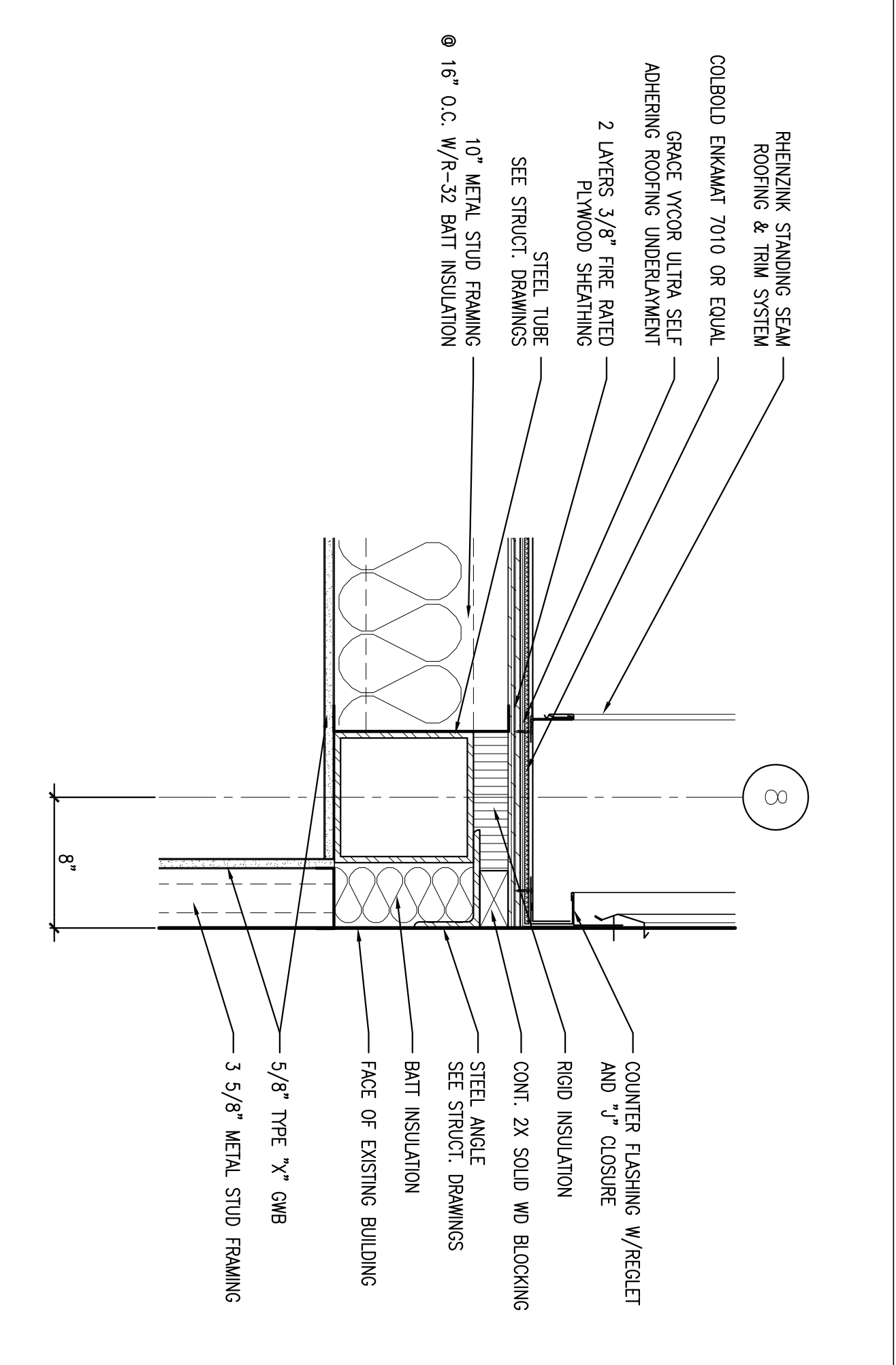
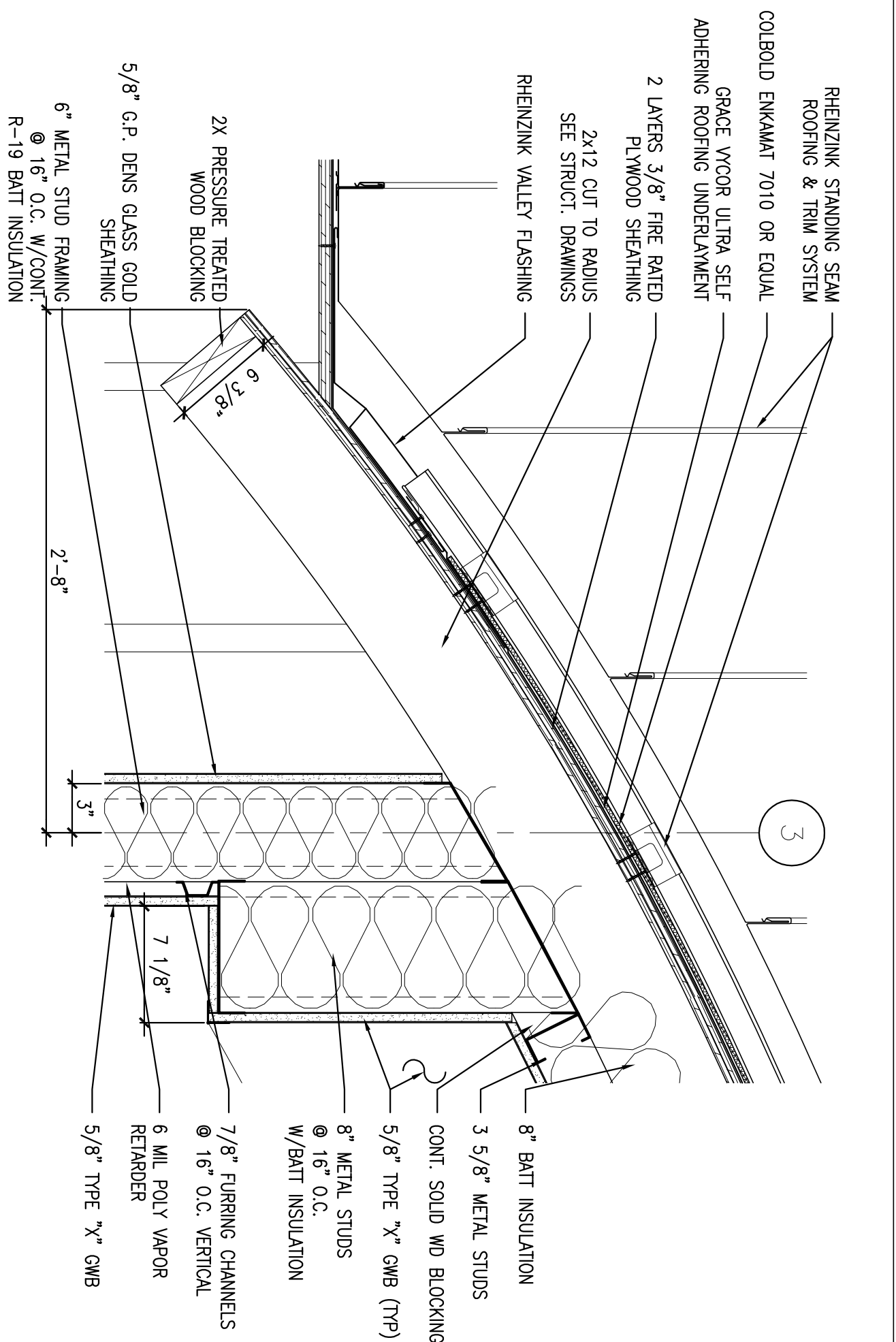


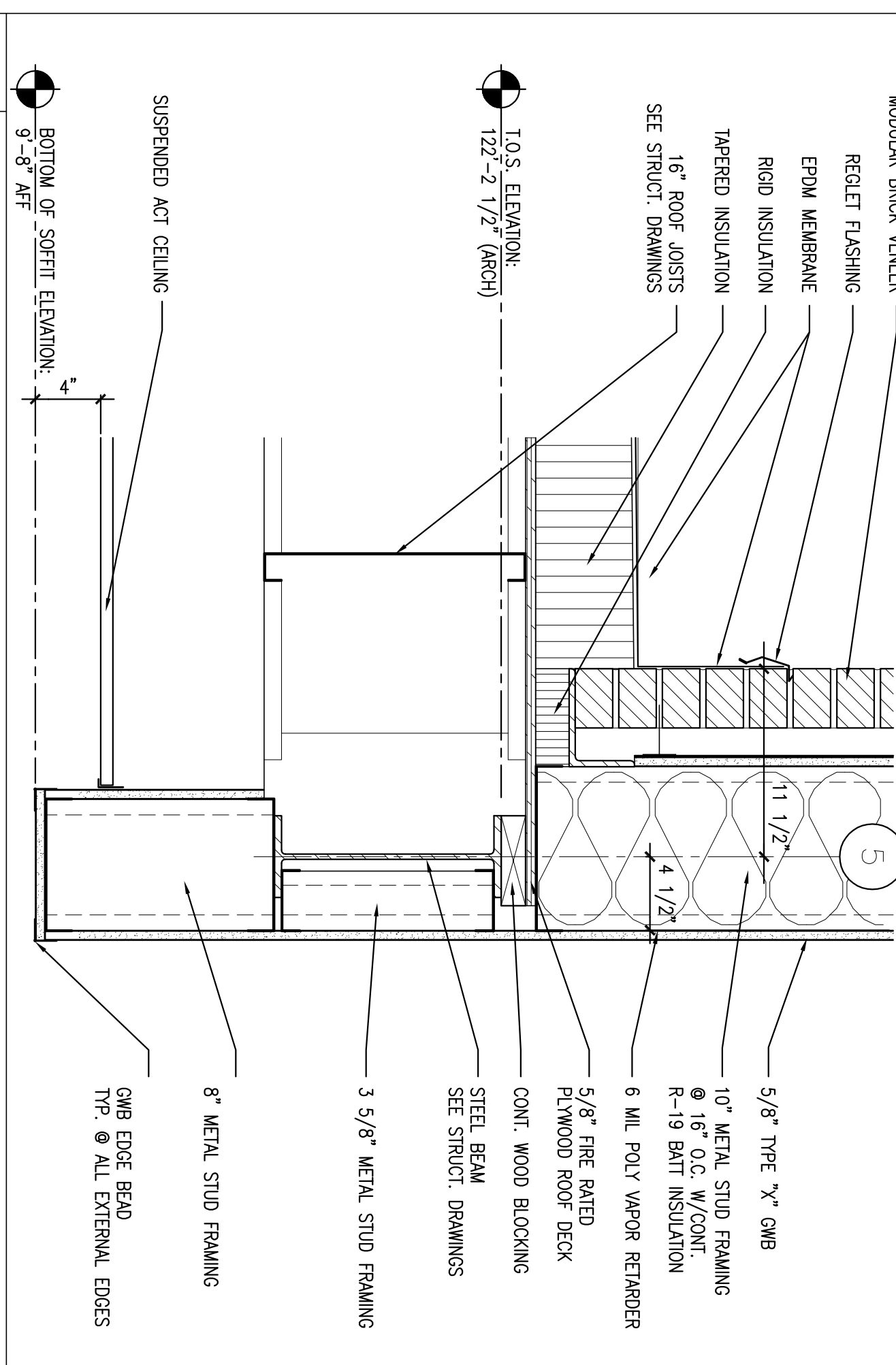
1 ROOF EDGE DETAIL @ ARCHED ROOF
 REFERENCED FROM: SCALE: 1/12" = 1'-0"



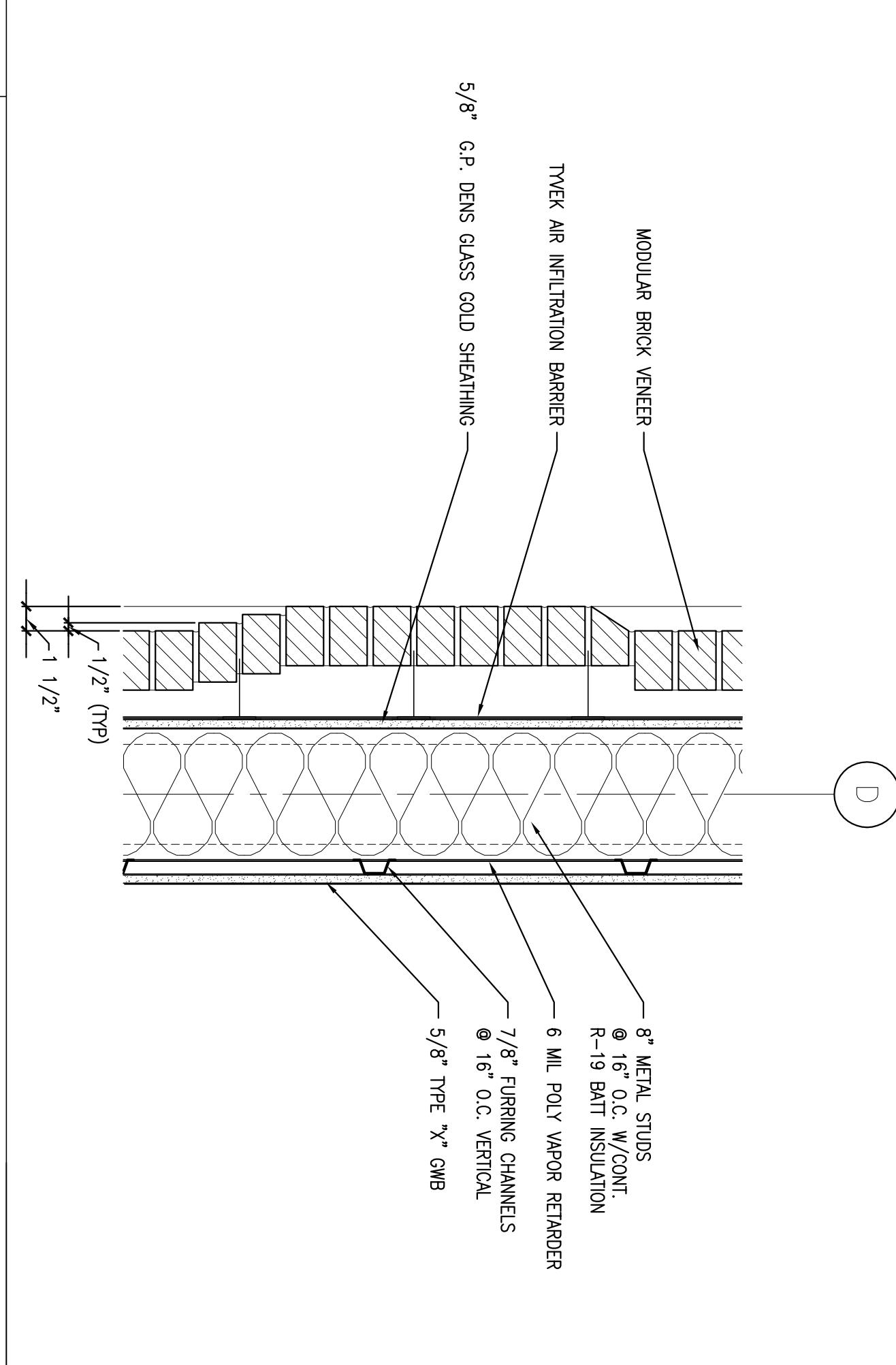
2 ARCHED ROOF CONNECTION DETAIL @ COLUMN LINE
 REFERENCED FROM: SCALE: 1/12" = 1'-0"



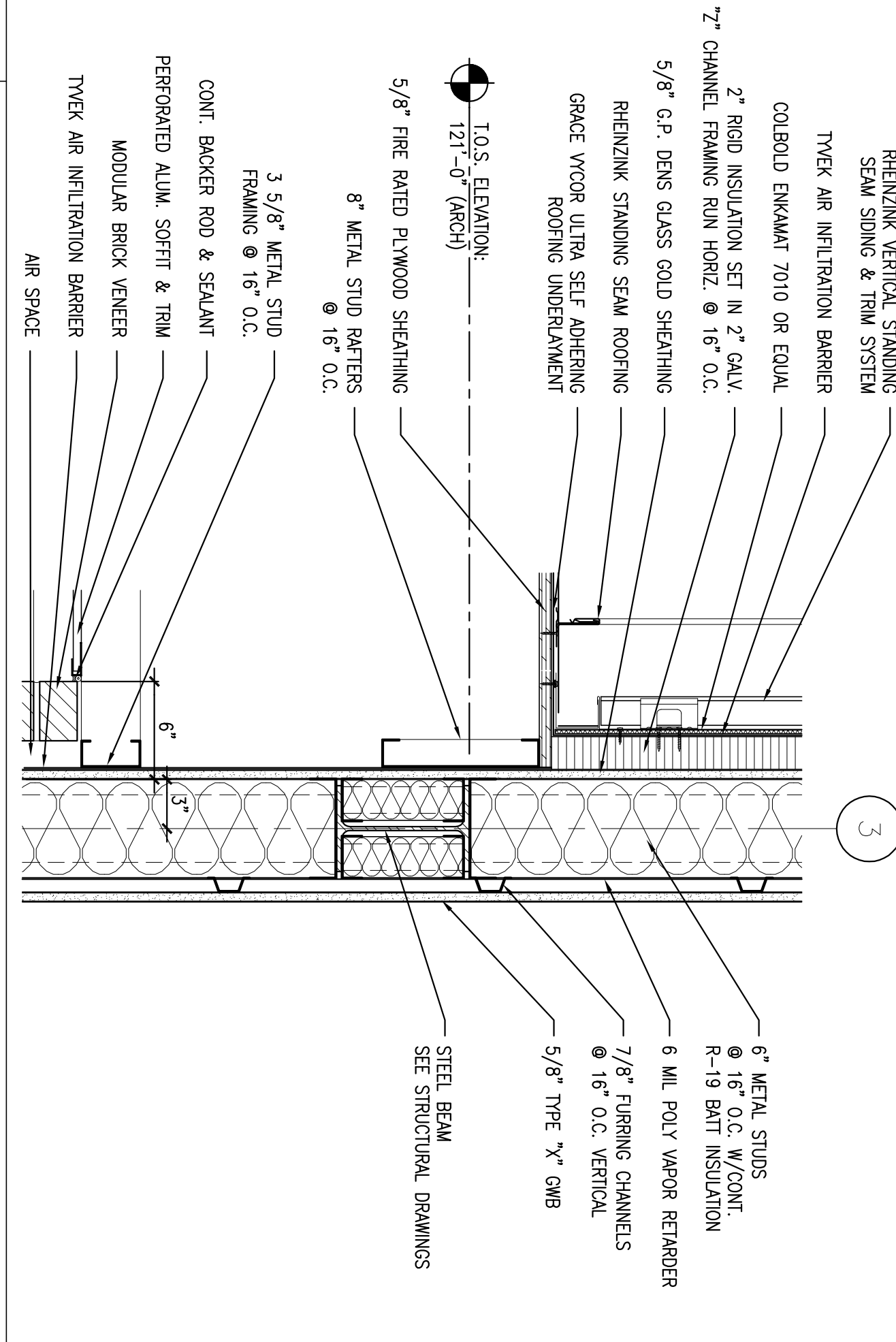
3 VALLEY DETAIL @ SLOPED TO ARCHED ROOF CONNECTION
 REFERENCED FROM: SCALE: 1/12" = 1'-0"



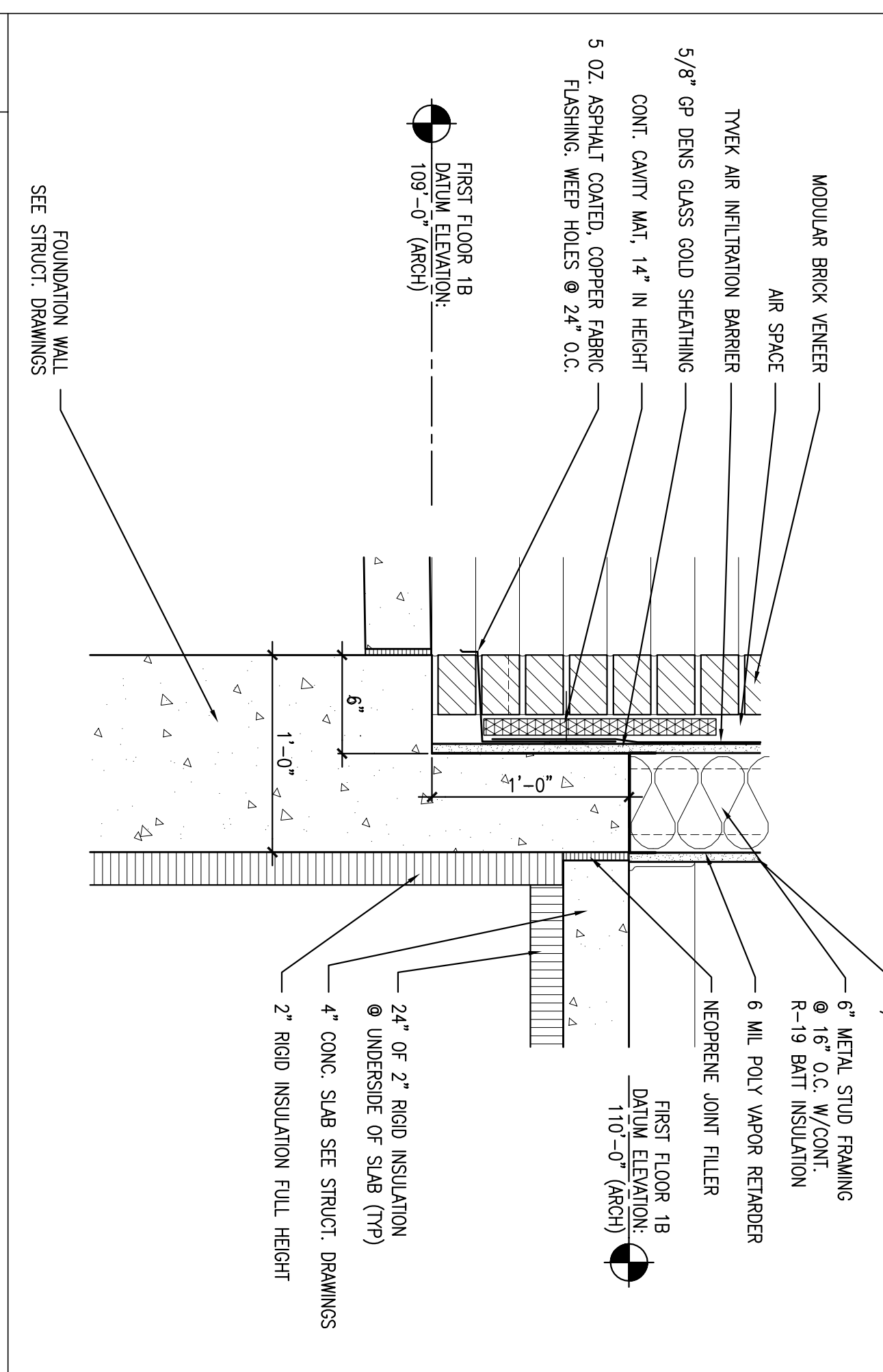
4 FLAT ROOF CONNECTION DETAIL
 REFERENCED FROM: SCALE: 1/12" = 1'-0"



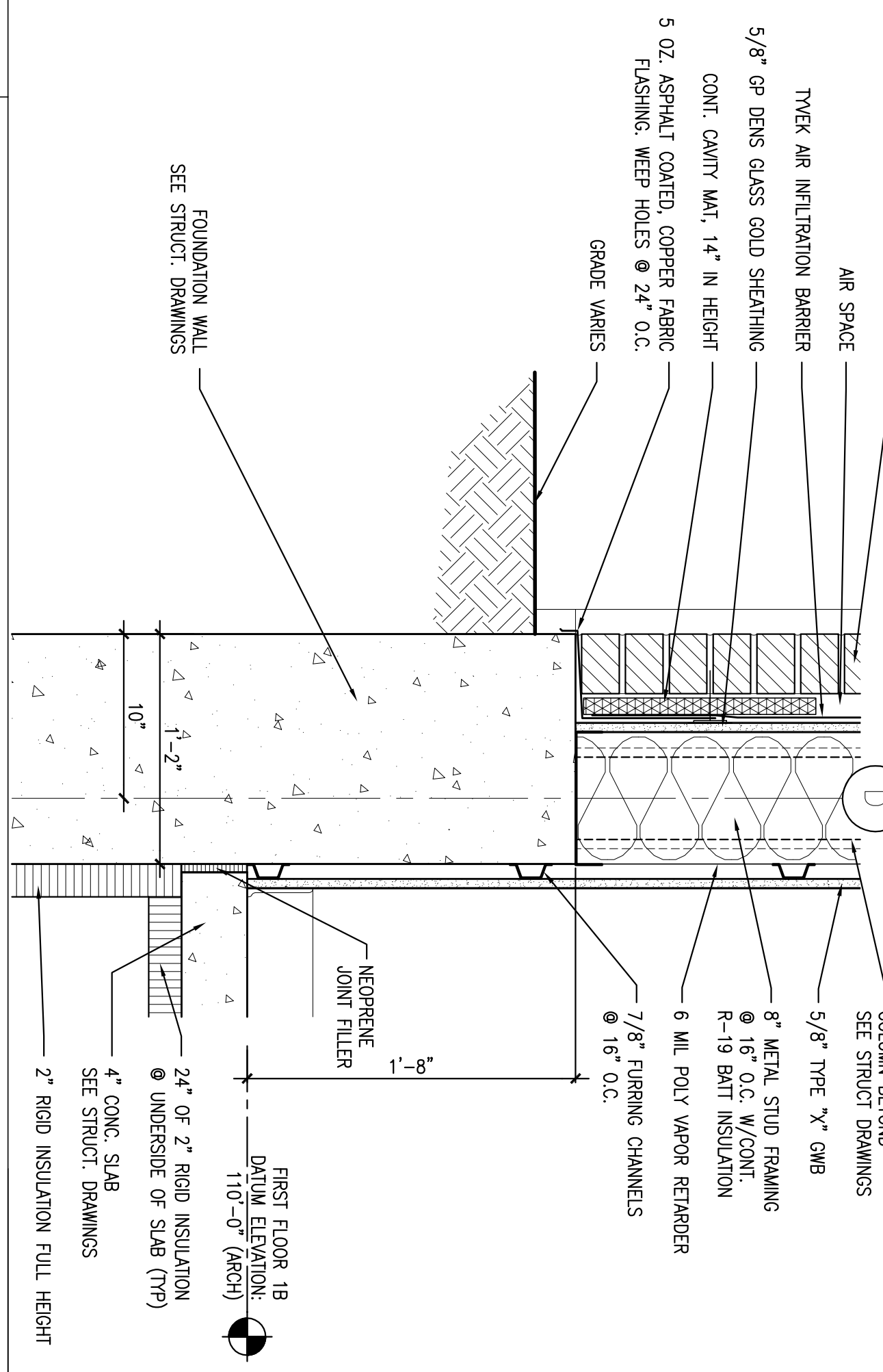
5 DETAIL AT BRICK VENEER CORBELING
 REFERENCED FROM: SCALE: 1/12" = 1'-0"



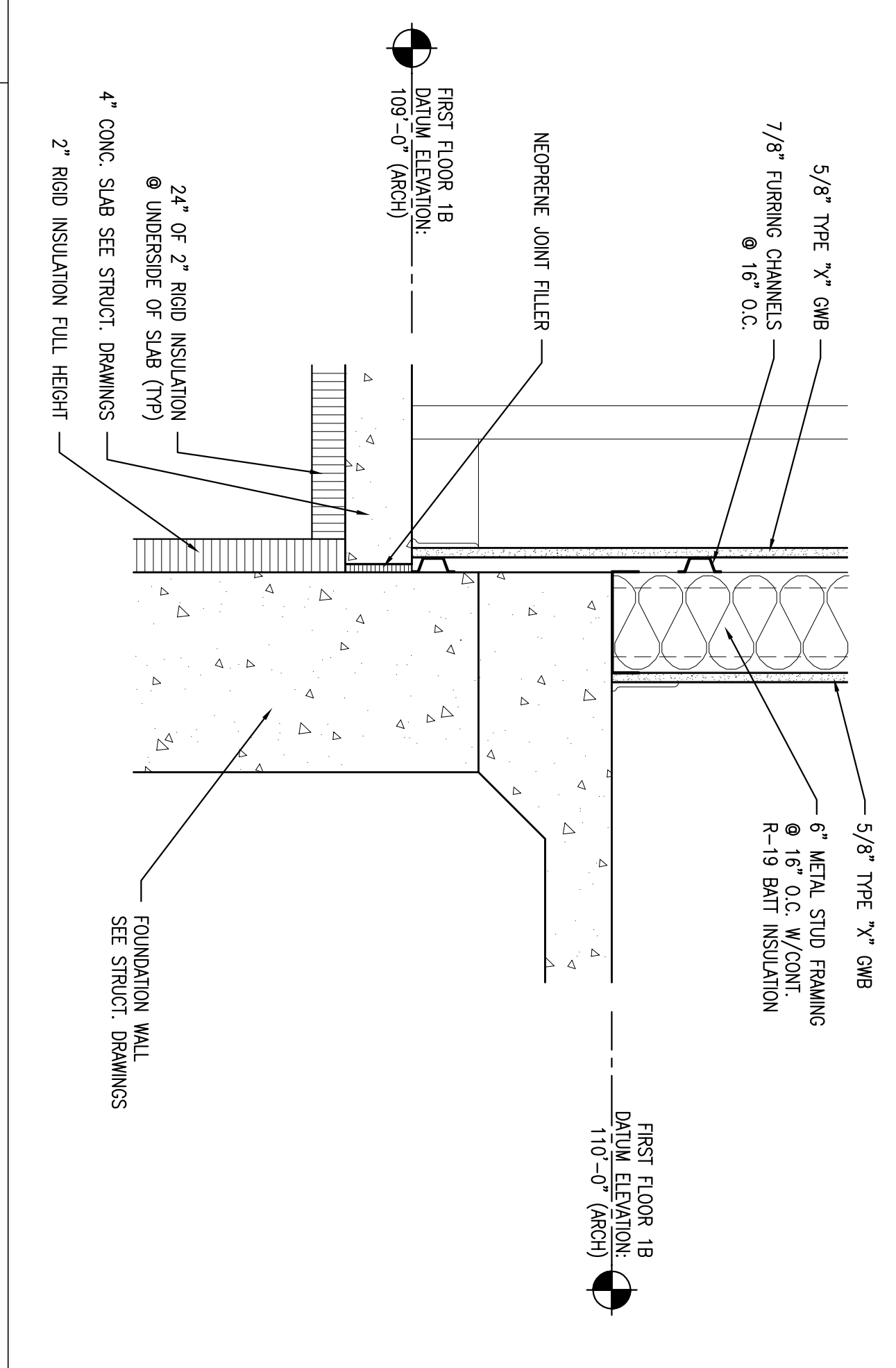
6 FASCIA/RAKE WALL DETAIL
 REFERENCED FROM: SCALE: 1/12" = 1'-0"



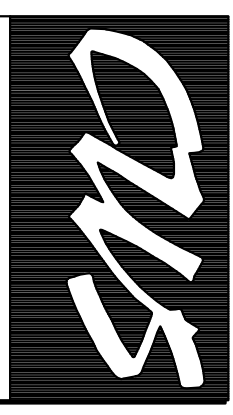
7 BASE WALL DETAIL
 REFERENCED FROM: SCALE: 1/12" = 1'-0"



8 BASE WALL DETAIL
 REFERENCED FROM: SCALE: 1/12" = 1'-0"



9 BASE WALL DETAIL
 REFERENCED FROM: SCALE: 1/12" = 1'-0"



CWS Architects

Architects

Space Planning

Value Design

434 Cumberland Avenue

Portland, ME 04101

Phone: (207)714-4441

Fax: (207)714-0118

www.CWSArch.com

Owner:

GREATER PORTLAND YMCA

676 Cumberland County YMCA

70 Forest Ave Portland, ME 04101

(207) 874-1111

Client:

YMCA HIGH STREET ENTRY

High Street - Portland, Maine

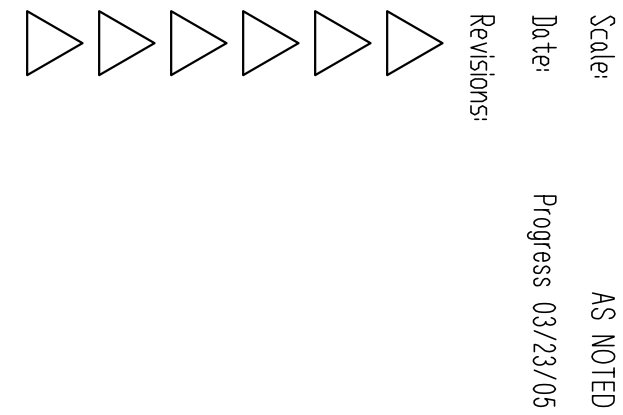
Project No: 0445436

Drawing Title: **MISC. DETAILS**

Scale: AS NOTED

Date: Progress 03/23/05

Revisions:



Drawing Number: **A7.4**