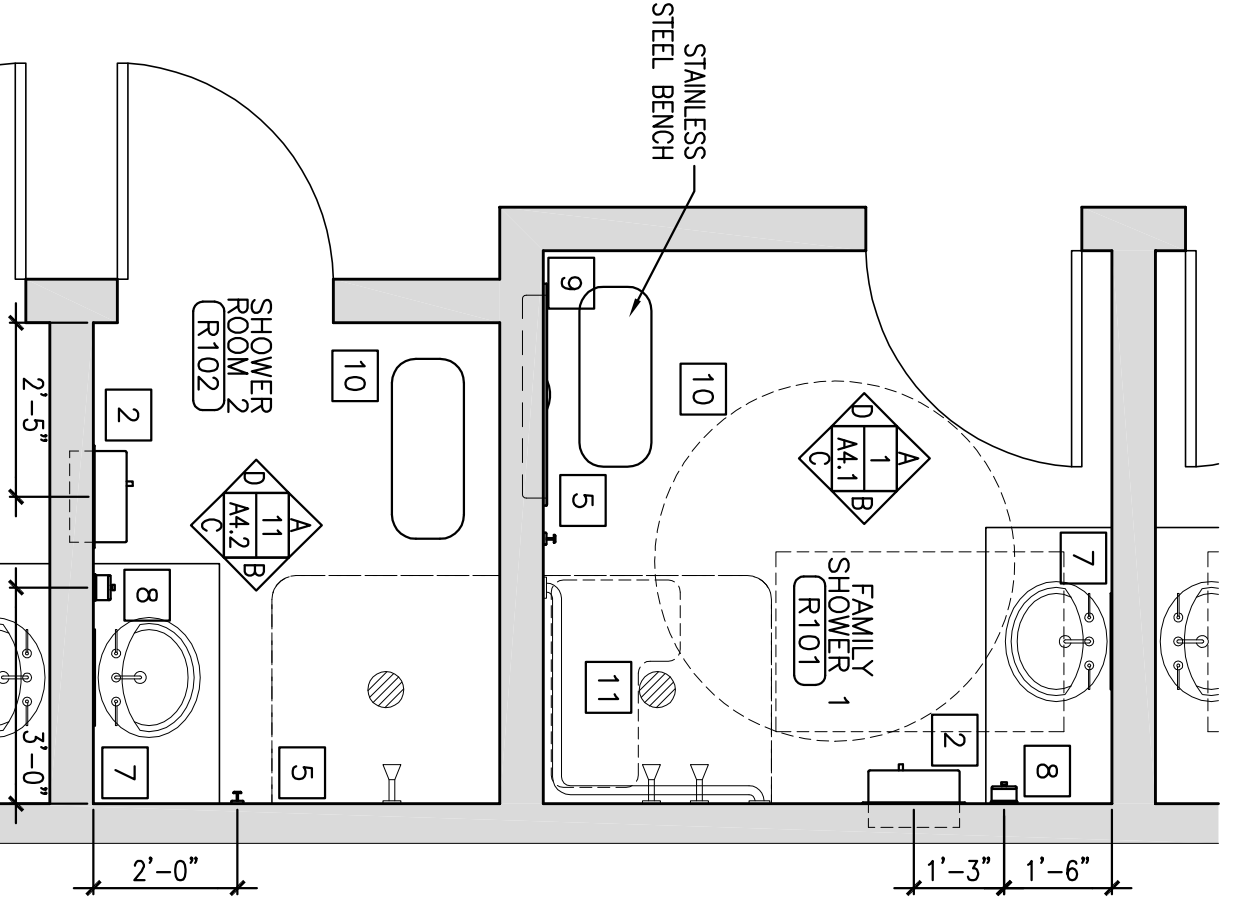


**1 INTERIOR ELEVATIONS @ FAMILY SHOWER ROOM |**

REFERENCED FROM:

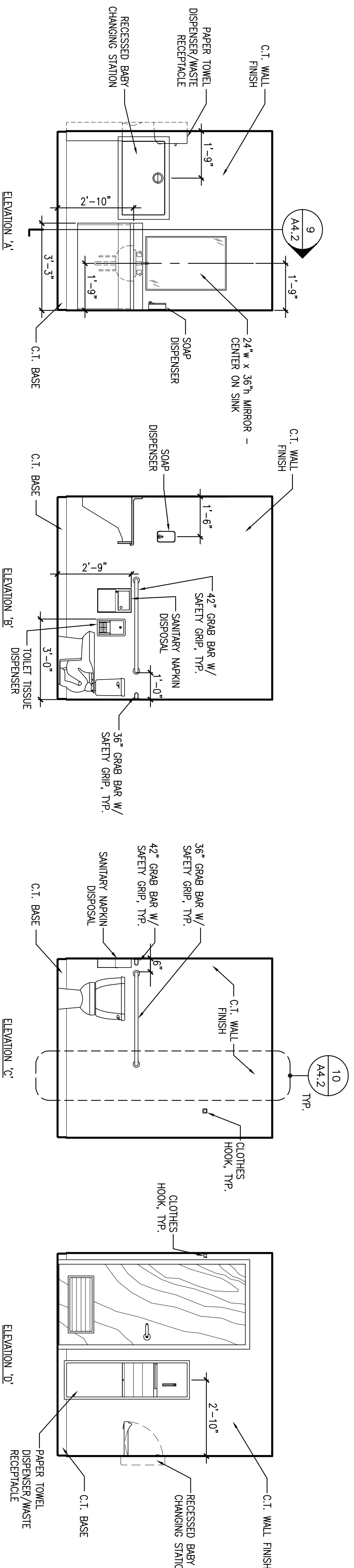
SCALE: 3/8" = 1'-0"



**4 ENLARGED PLAN @ SHOWER ROOMS**

REFERENCED FROM:

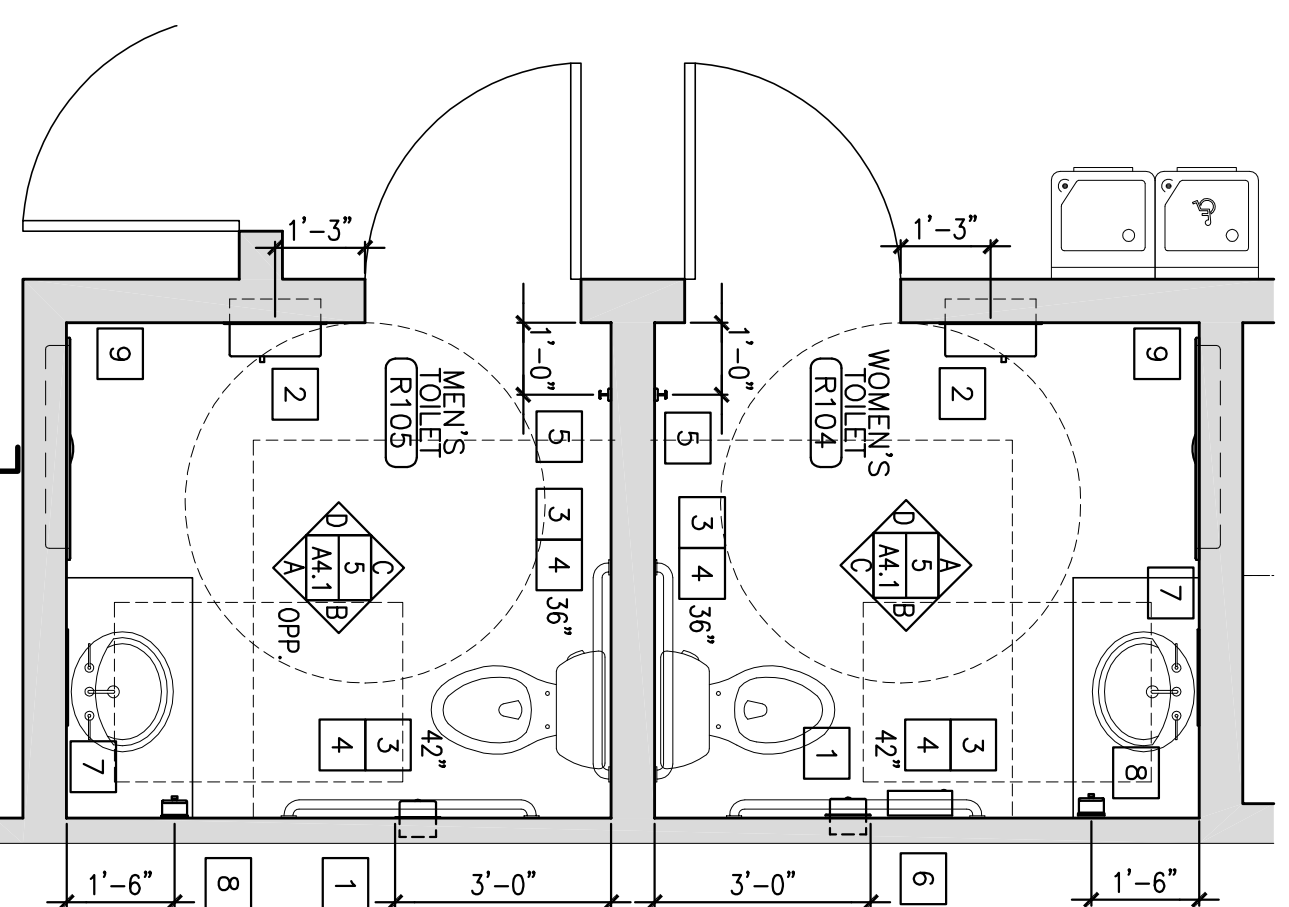
SCALE: 3/8" = 1'-0"



**5 INTERIOR ELEVATIONS @ TOILET ROOMS**

REFERENCED FROM:

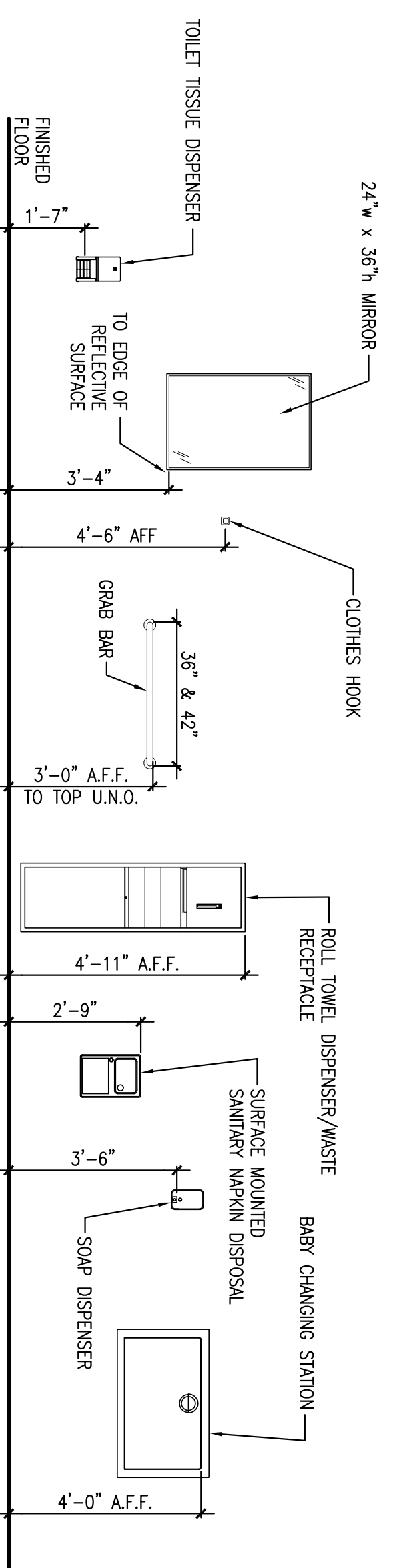
SCALE: 3/8" = 1'-0"



**8 ENLARGED PLAN @ TOILET ROOMS**

REFERENCED FROM:

SCALE: 3/8" = 1'-0"



GENERAL NOTE:  
 PROVIDE SOLID BLOCKING AS REQUIRED FOR ANY AND ALL TOILET ACCESSORIES.  
 ALL TOILET TISSUE DISPENSERS, ROLL TOWEL DISPENSER/WASTE RECEPTACLES &  
 SOAP DISPENSERS BY OWNER.

**INSTALLATION HEIGHTS**

**9 NOT USED**

REFERENCED FROM:

SCALE:

**10 TOILET ROOM ACCESSORY INSTALLATION HEIGHTS**

REFERENCED FROM:

SCALE: 3/8" = 1'-0"

**12 TOILET ROOM ACCESSORY LEGEND**

REFERENCED FROM:

SCALE: NONE

- NOTE:  
 PROVIDE BLOCKING AS REQUIRED FOR ALL  
 WALL MOUNTED FIXTURES.
- TOILET ROOM ACCESSORY LEGEND**
- 1 CLASSIC SERIES SURFACE MOUNTED, MULTI-ROLL TOILET TISSUE DISPENSER: EQUAL TO BOBRICK B-2888, BY OWNER
  - 2 CLASSIC SERIES, RECESSED ROLL TOWEL DISPENSER/WASTE RECEPTACLE: EQUAL TO BOBRICK B-3961, BY OWNER
  - 3 STAINLESS STEEL GRAB BARS W/ CONCEALED MOUNTING: EQUAL TO BOBRICK B-507.99X42, X36.
  - 4 GRAB BAR ANCHORS: EQUAL TO BOBRICK B-2562 SERIES.
  - 5 HEAVY-DUTY CLOTHES HOOK W/ CONCEALED MOUNTING: EQUAL TO BOBRICK B-2116.
  - 6 CLASSIC SERIES SURFACE MOUNTED, SANITARY NAPKIN DISPOSAL: EQUAL TO BOBRICK B-254.
  - 7 MIRROR WITH STAINLESS STEEL ANGLE FRAME: EQUAL TO BOBRICK B-290X2436.
  - 8 CLASSIC SERIES, SURFACE MOUNTED SOAP DISPENSER: EQUAL TO BOBRICK B-2111, BY OWNER
  - 9 HORIZONTAL MOUNTED, RECESSED, STAINLESS STEEL BABY CHANGING STATION: EQUAL TO KOOLA 16710-58RE.
  - 10 WOOD BENCH W/FLOOR ANCHORED STAINLESS STEEL PEDESTALS.
  - 11 FOLDING SHOWER SEAT W/PADDED CUSHION: EQUAL TO BS17 (RIGHT HAND) & BS18 (LEFT HAND)

**CWS Architects**  
 Architects  
 Space Planning  
 Value Design

434 Cumberland Avenue  
 Portland, ME 04101  
 Phone: (207)774-4441  
 Fax: (207)774-4018  
[www.CWSarch.com](http://www.CWSarch.com)

Owner:  
**GREATER PORTLAND YMCA**  
 c/o Cumberland County YMCA  
 70 Forest Ave Portland, ME 04071  
 (207) 874-1111

Client:

**YMCA HIGH STREET ENTRY**  
 High Street - Portland, Maine

Project No: 0465458  
 Drawing Title:  
 ENLARGED TOILET PLANS AND ELEVATIONS

Scale: AS NOTED  
 Date: Progress 03/23/05  
 Revisions:

Drawing Number:  
**A4.1**