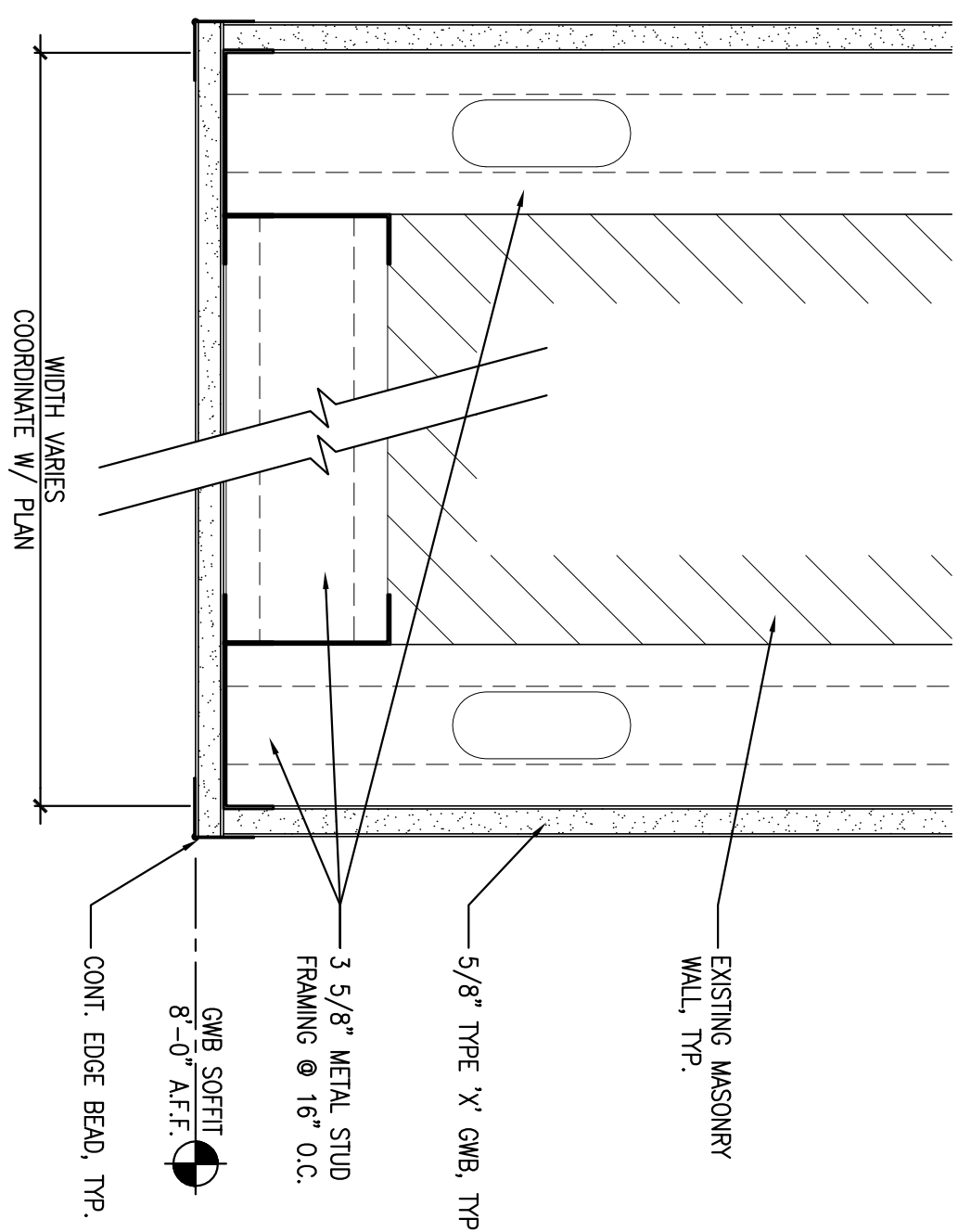
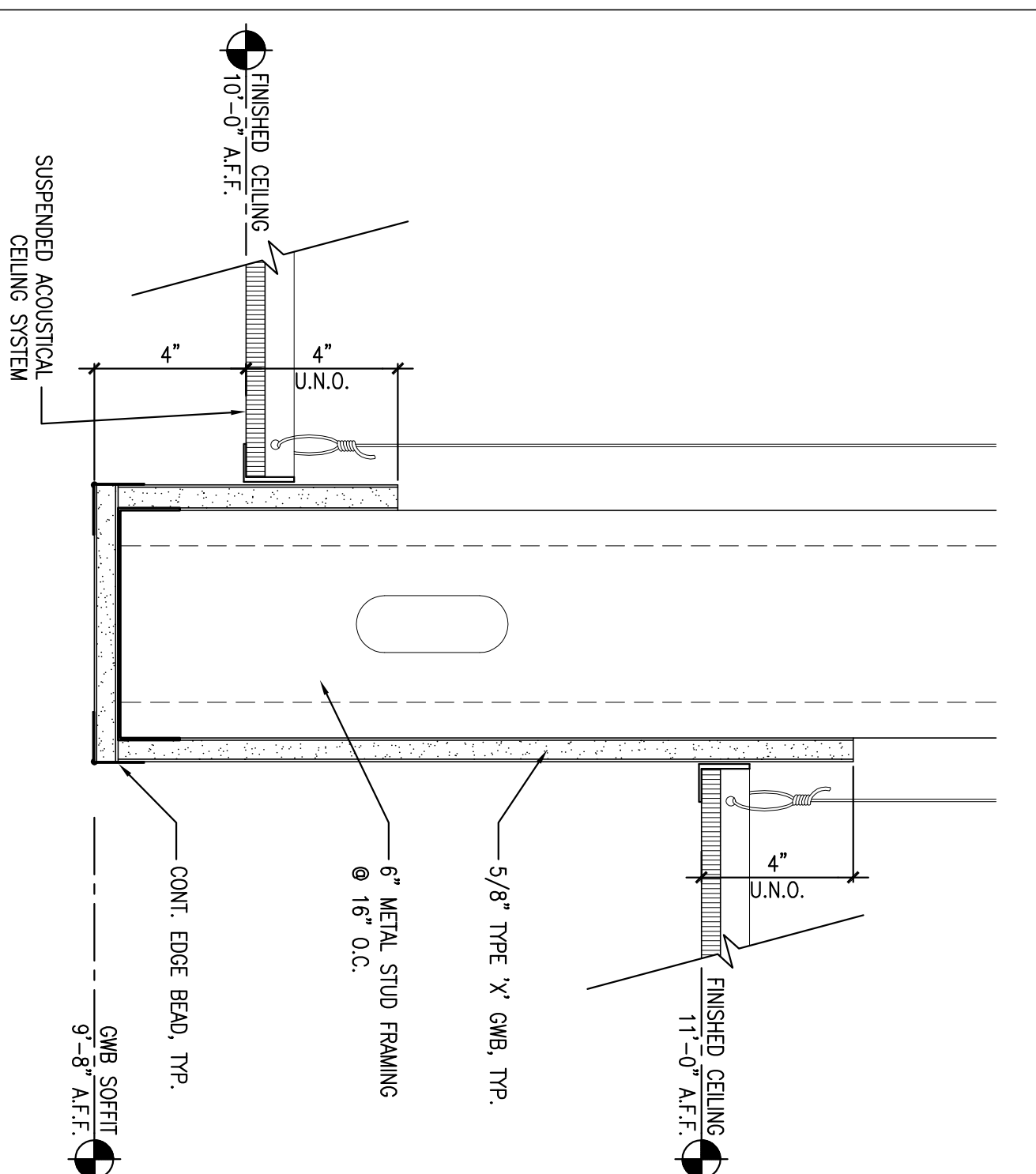


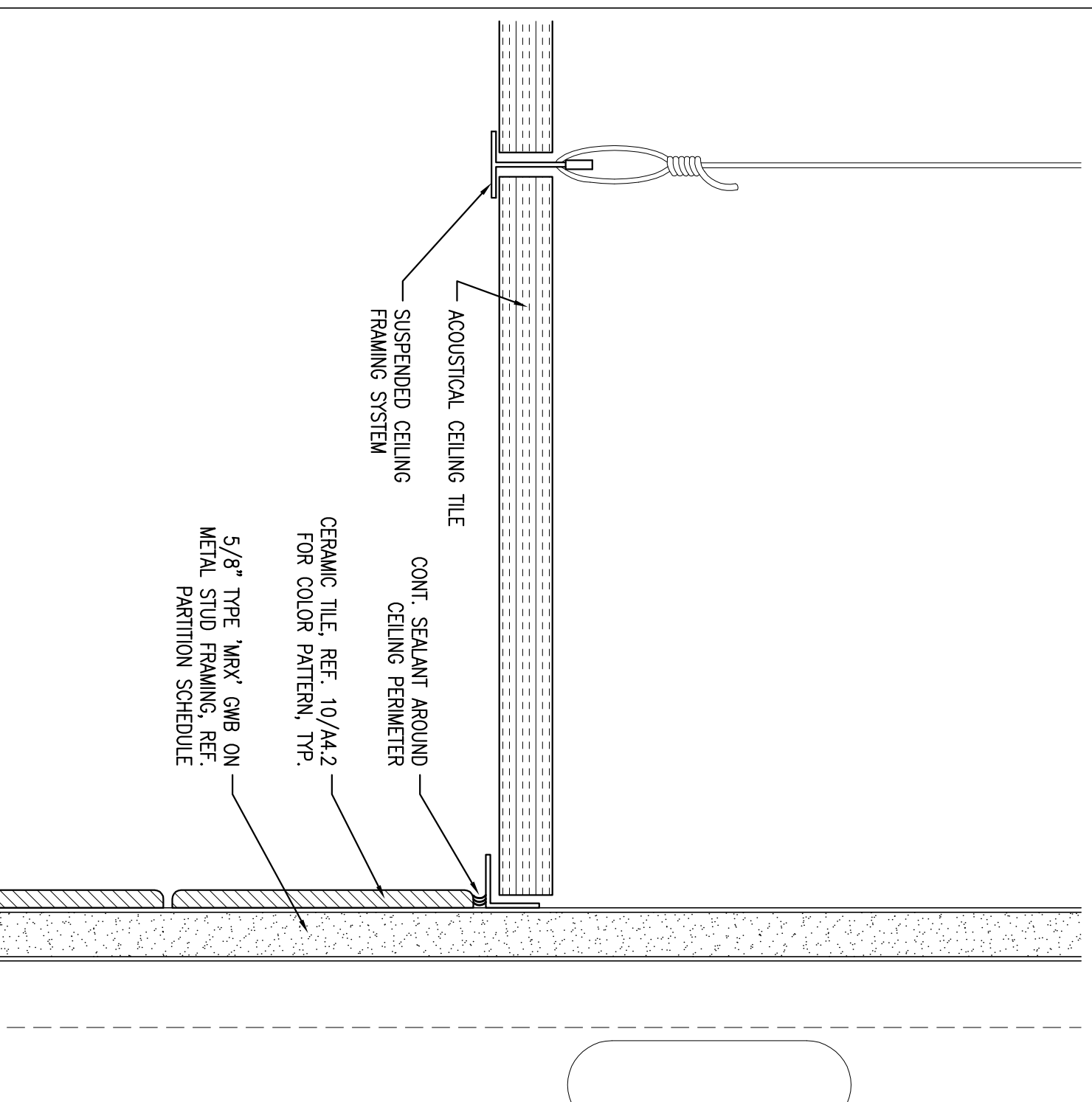
1 SOFFIT DETAIL
 REFERENCED FROM:
 SCALE: 3" = 1'-0"



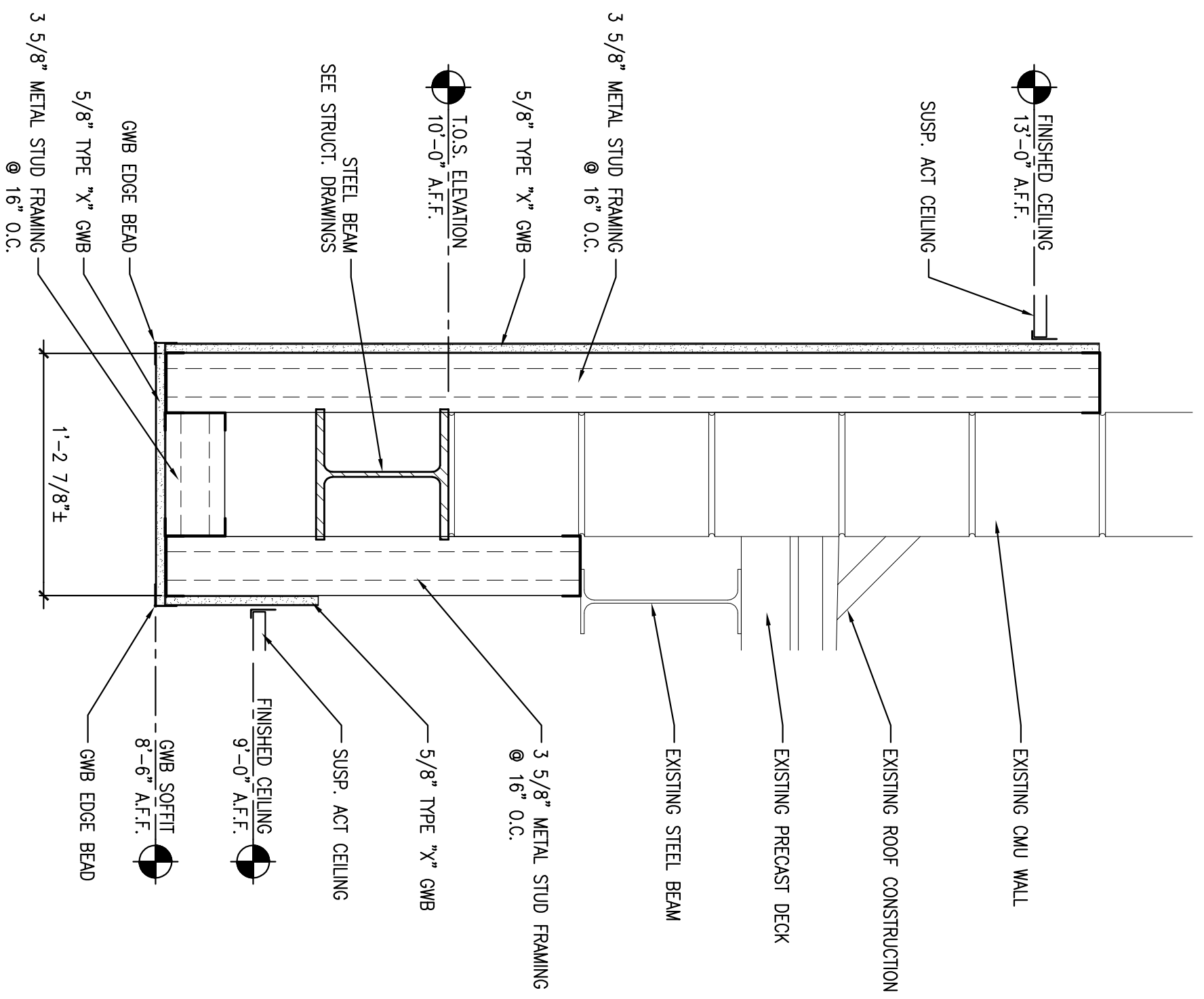
2 SOFFIT DETAIL
 REFERENCED FROM:
 SCALE: 3" = 1'-0"



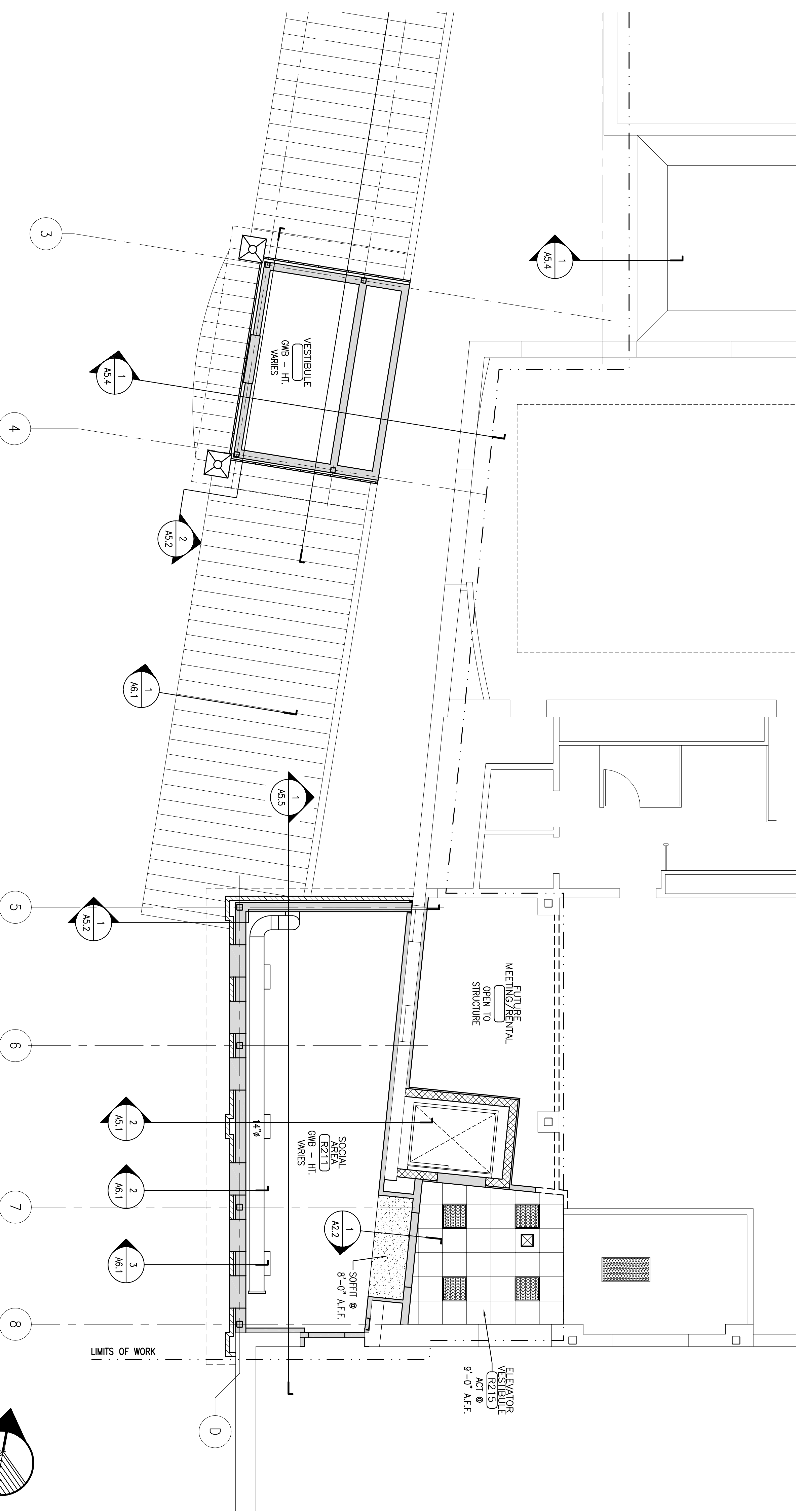
3 SOFFIT DETAIL
 REFERENCED FROM:
 SCALE: 3" = 1'-0"



4 CEILING DETAIL @ TOP OF CERAMIC TILE
 REFERENCED FROM:
 SCALE: 6" = 1'-0"



9 SOFFIT DETAIL
 REFERENCED FROM:
 SCALE: 1/2" = 1'-0"



10 SECOND FLOOR REFLECTED CEILING PLAN
 REFERENCED FROM:
 SCALE: 5/16" = 1'-0"



CWS Architects
 Architects
 Space Planning
 Value Design
 434 Cumberland Avenue
 Portland, ME 04101
 Phone: (207)774-4441
 Fax: (207)774-0018
www.CWSArch.com

Owner:
GREATER PORTLAND YMCA
 c/o Cumberland County YMCA
 70 Forest Ave Portland, ME 04101
 (207) 874-1111
 Client:

YMCA HIGH STREET ENTRY
 High Street - Portland, Maine

Product No 0465458
 Drawing Title
SECOND FLOOR REFLECTED CEILING PLAN & DETAILS
 Scale 3/16" = 1'-0"
 Date Progress 03/23/05
 Revisions:
 Drawing Number
A.2.2

ISSUED FOR PERMITTING & PRICING 05/12/05