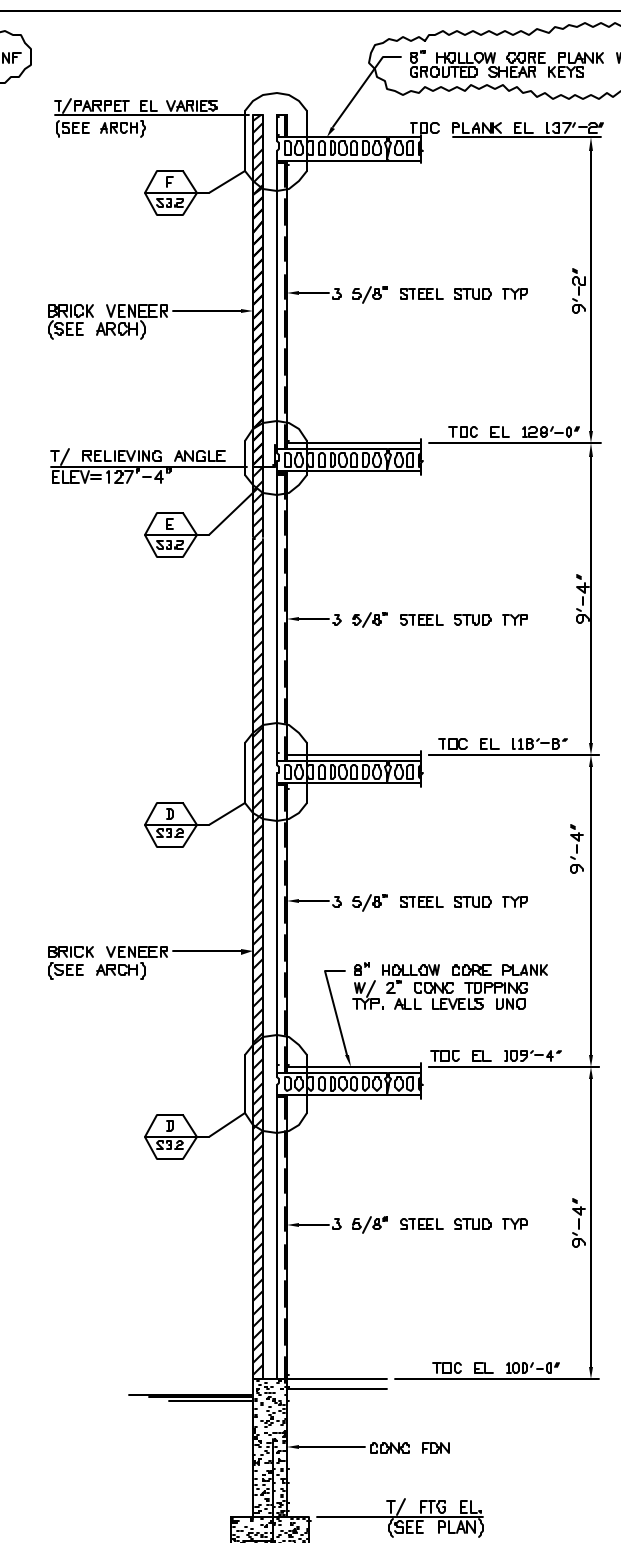
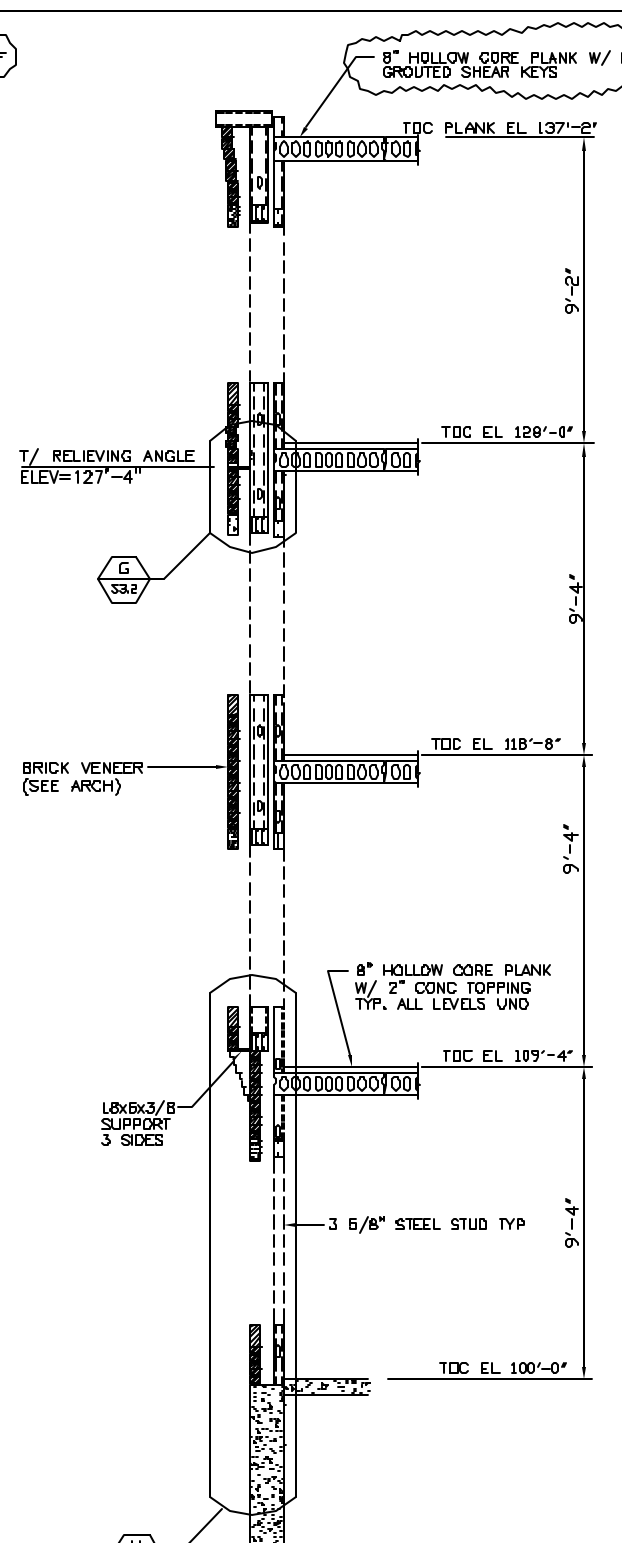


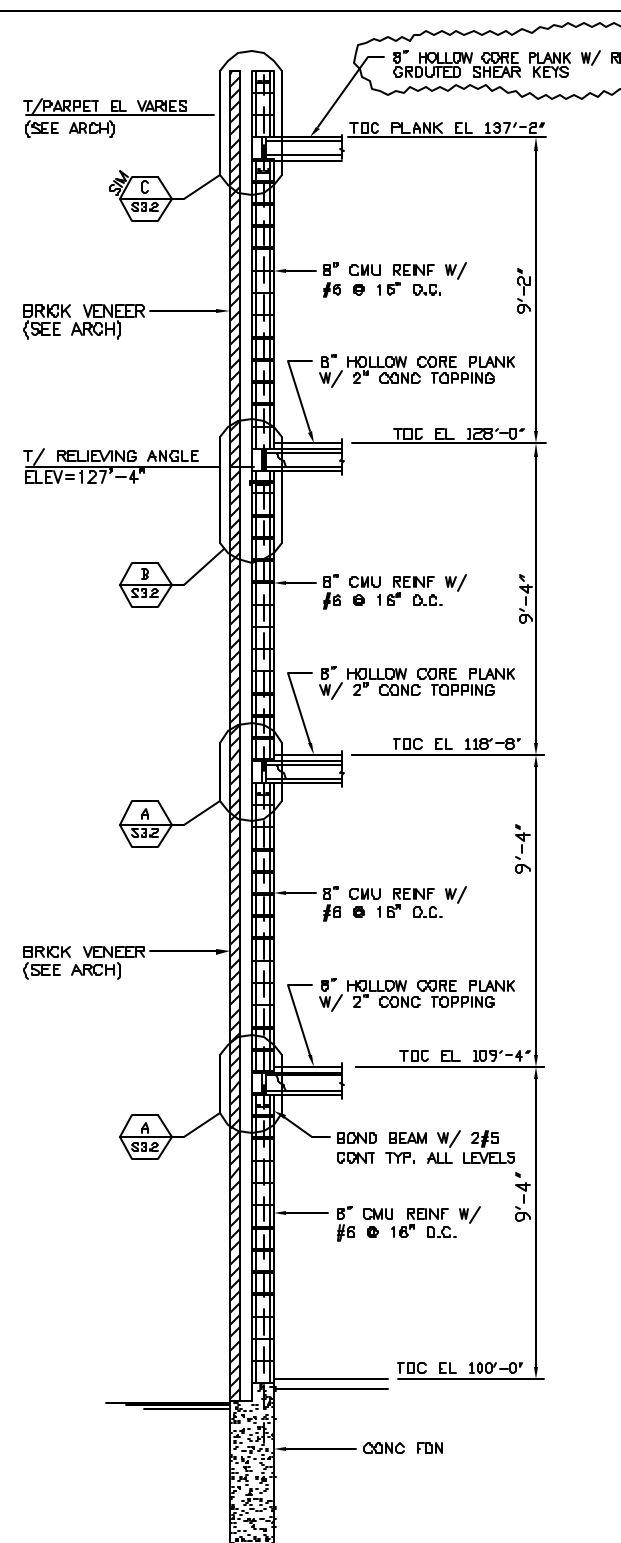
SECTION A-A
3/8" = 1'-0"
S1.1, S1.2
S1.3



SECTION B-B
3/8" = 1'-0"
S1.1, S1.2
S1.3



SECTION C-C
3/8" = 1'-0"
S1.1, S1.2
S1.3



SECTION D-D
3/8" = 1'-0"
S1.1, S1.2
S1.3

THESE DRAWINGS HAVE BEEN DEVELOPED BY L&L STRUCTURAL ENGINEERING SERVICES, INC. FOR THE TITLED SET ONLY. THE DRAWINGS ARE THE SOLE PROPERTY OF L&L STRUCTURAL ENGINEERING SERVICES, INC. AND THEY OR ALL NOT BE USED, REPRODUCED OR ALTERED WITHOUT THE WRITTEN CONSENT OF L&L STRUCTURAL ENGINEERING SERVICES, INC.

CWS

CWS Architects
 Architecture
 Space Planning
 Value Design

424 Cumberland Avenue
 Portland, ME 04101
 Phone: (207) 774-4441
 Fax: (207) 774-4818
www.cwsarch.com

CCYSRO, L.P.
 c/o Cumberland County YMCA
 70 Forest Ave Portland, ME 04101
 (207) 874-1111

YMCA APARTMENTS at 331 HIGH STREET
 High Street - Portland, Maine

Project No: 23051

Issuing Title:
TYPICAL WALL SECTIONS

Scale: 3/8" = 1'-0"
 Date: OCTOBER 1, 2004

Revisions:
 VALUE ENGINEERING REVISIONS
 RAISED RELIEVING ANGLE ELEV

Issuing Number:
S3.1